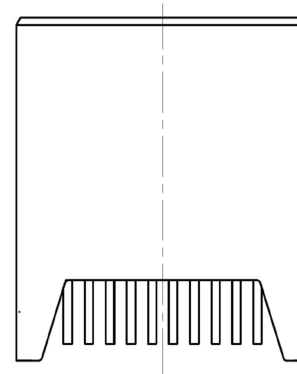
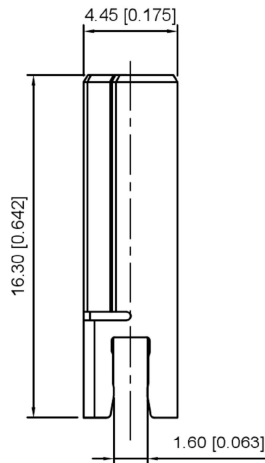
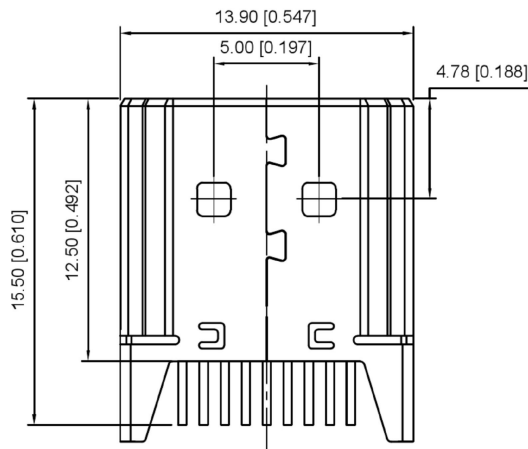


SECTION A-A





NOTE :

- 1.MATERIAL 材料:  
HOUSING 胶壳: LCP,UL94V-0  
CONTACT 端子:C5191  
SHELL 外壳:BRASS
- 2.FINISH 电镀:  
CONTACT 端子: C5191,GOLD OVER NICKEL  
SHELL 外壳: BRASS,GOLD FLASH ALL PLATING.
- 3.Electrical parameters 电气参数  
Contact Current Rating 触点电流额定值: 0.5Amin  
Voltage Rating 额定电压: 40V AC(RMS)  
Operating temperature 工作温度: -25℃ ~ +85℃
- 4.Durability 耐用性: 10000 cycles

A72-16J3-5X5G1

- 3:AU 1U"
- 5:AU 15U"
- 6:AU 30U"

				ANGULAR	±5°		DSND	SCALE: N/A	MODEL TYPE: HDMI CONNECTOR	
				L ≤ 4	±0.2		DWN	VIEW: 	PART NO.:	
				4 < L ≤ 16	±0.3		CHKD	UNIT: mm/in	DWG NO.:	
				16 < L ≤ 63	±0.4		APPD	SIZE: A4	A72-16J3-5X5G1	
				L > 63	±0.5				WEIGHT	SHEET
REVISIONS				UNSPECIFIED TOLERANCES		DONG GUAN XI BANG ELECTRONIC CO., LTD			1/1	A0
www.alpsr.com www.gdxjdz.com www.xbswitch.com										