

# Ordering Code:

CP-01 2 \*\* 0 \* S  
 ① ② ③ ④ ⑤ ⑥

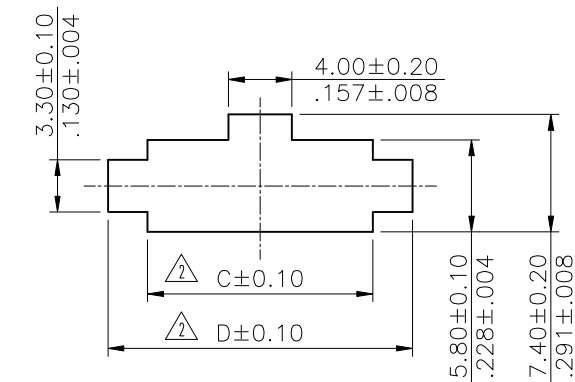
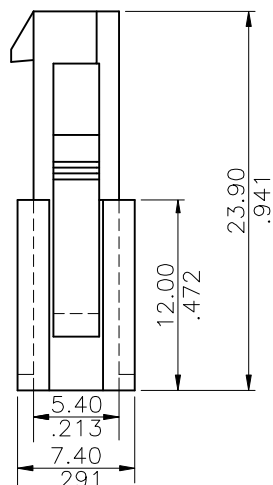
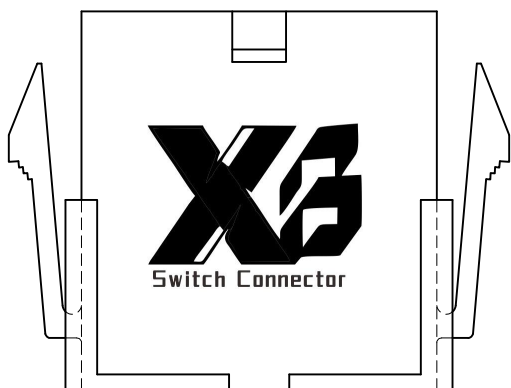
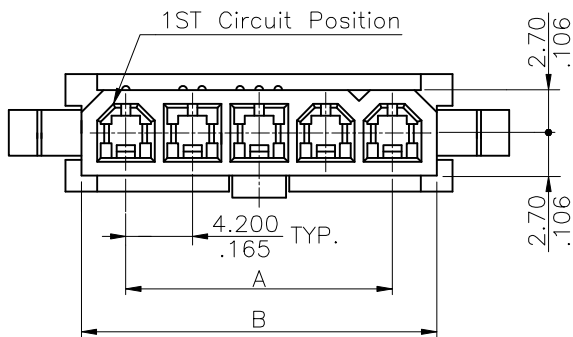
- ① Series No.
- ② Type of Connector: 2= Plug
- ③ No of Circuits:
- ④ Plating Code: 0= Non plating
- ⑤ Variation: F= UL 94V-2 WITH EARS  
(Glow wire available)  
E= UL 94V-2 WITHOUT EARS  
(Glow wire available)

⑥ Option: S= Single Row

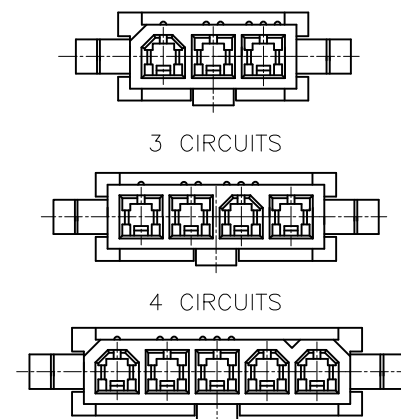
# Notes:

- 1. Material:  
Insulation: Nylon 6
- Panel mount version is for use with 0.80mm(.031") or 2.00mm(.079") thick panels
- Panel should be punched in the direction

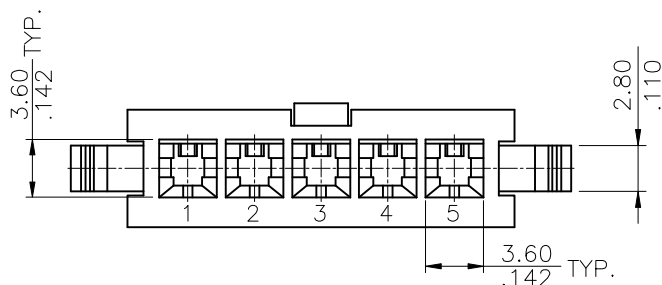
- 2. Glow wire requirement:
- IEC 60695-2-12 GWFI  
960°C@0.38mm  
& 930°C@0.75mm  
& 960°C@1.50mm  
& 960°C@3.00mm
- IEC 60695-2-13 GWIT  
930°C@0.38mm  
& 930°C@0.75mm  
& 825°C@1.50mm  
& 825°C@3.00mm



Panel Mounting Hole Details



CIRCUIT PATTERN SCHEDULE



WITHOUT EARS

Circuits	Dimension			
	A	B	C	D
3	8.40(.331)	13.9(.547)	14.2(.559)	19.2(.756)
4	12.60(.496)	18.1(.713)	18.4(.724)	23.4(.921)
5	16.80(.661)	22.3(.878)	22.6(.890)	27.6(1.087)

**RoHS Compliant**

SYM	NAME	DATE	REVISIONS	APPROVED BY:	DATE	UNIT: mm / inch	TOLERANCE UNLESS OTHERWISE SPECIFIED	TITLE: 4.20mm PICH PLUG CONN. (SINGLE ROW)	MATERIAL:	FINISH:	DRAWING NO.	PART NO.	SHEET	OF
④														
③	Kenny	8/27-20'	ECNT120227	DRAWN BY:	Kenny	8/26-20'								
②	Karen	1/29-14'	ECNT114018	ENGINEER:	Sun	9/1-20'	.X ± 0.38/.015 X' ± 1'							
①	Eisley	7/24/08"	ECN08350	CHECKED BY:	Eisley	9/4-20'	.XX ± 0.25/.010 X' ±							
				APPROVED BY:	Eisley	9/4-20'	.XXX ± 0.10/.004 X' ±							

**XIB** 东莞市溪榜电子有限公司  
 DONG GUAN XI BANG ELECTRONI CS CO., LTD.

DRAWING NO.	CP0146AD	PART NO.	CP-012**0*S
SCALE	2 / 1	SHEET	1 OF 1