

Note:

1. Material:

* Insulation: Nylon 9T+33% GF. UL 94V-0, Color Nature

* Contact: Brass

* Tab: Brass

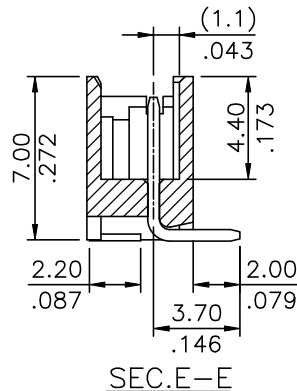
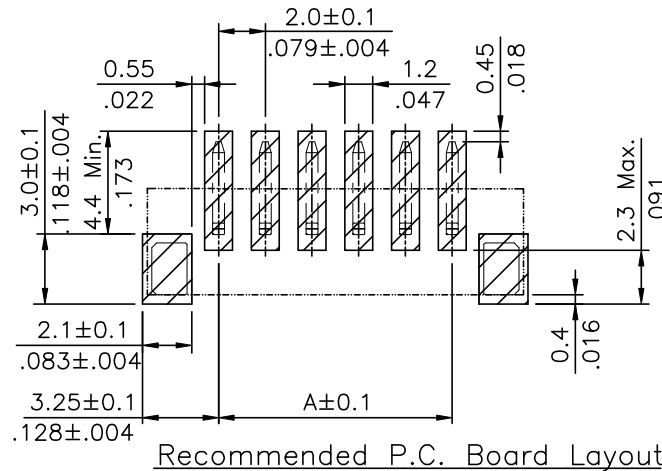
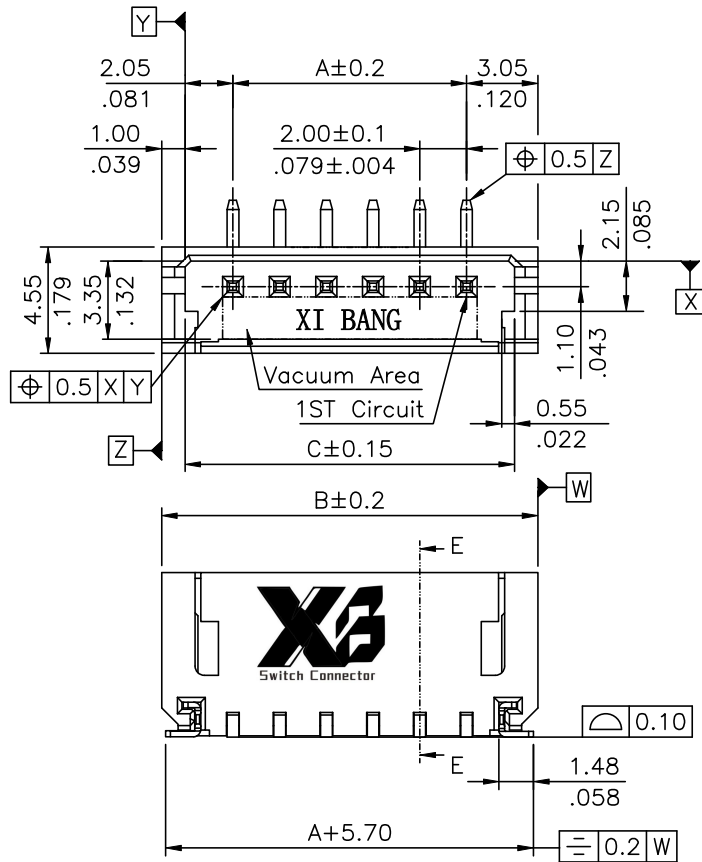
2. Plating:

* Tab: Matte Tin plated over Nickel

3. For Lead Free IR Reflow Process

4. ELV and Rosh Compliant

Circuits	Dimension			Circuits	Dimension		
	A	B	C		A	B	C
2	2.00(.079)	8.10(.319)	6.10(.240)	9	16.00(.630)	22.10(.870)	20.10(.791)
3	4.00(.157)	10.10(.398)	8.10(.319)	10	18.00(.709)	24.10(.949)	22.10(.870)
4	6.00(.236)	12.10(.476)	10.10(.398)	11	20.00(.787)	26.10(1.028)	24.10(.949)
5	8.00(.315)	14.10(.555)	12.10(.476)	12	22.00(.866)	28.10(1.106)	26.10(1.028)
6	10.00(.394)	16.10(.634)	14.10(.555)	13	24.00(.945)	30.10(1.185)	28.10(1.106)
7	12.00(.472)	18.10(.713)	16.10(.634)	14	26.00(1.024)	32.10(1.264)	30.10(1.185)
8	14.00(.551)	20.10(.791)	18.10(.713)	15	28.00(1.102)	34.10(1.343)	32.10(1.264)



Ordering Code:

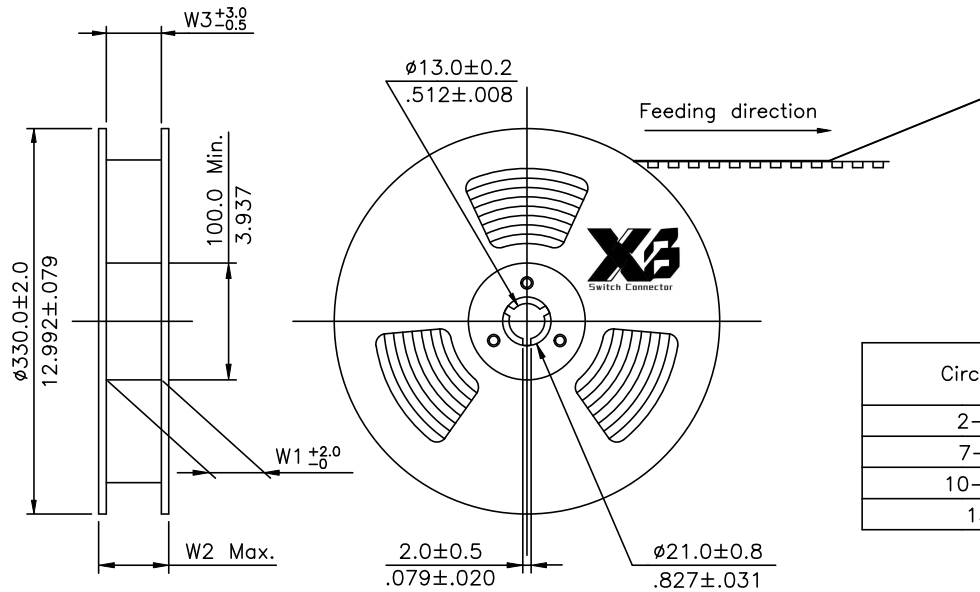
CIE7 ** M * V R 0 -LF
 ① ② ③ ④ ⑤ ⑥ ⑦ ⑧

- ① Series No.
- ② No. of Circuits:
- ③ Contacts Type: M= SMT
- ④ Plating:
1= 3.05μm(120μ") Min. Matte Tin over 0.76μm(30μ") Nickel
- ⑤ Type: V= Straight
- ⑥ Packing Options: R= Tape & Reel
- ⑦ Option: 0= Standard (Without pick & place pad)
- ⑧ Other option:
-LF= For Lead Free soldering processes

Lead Free Process RoHS Compliant

4					DATE	UNIT: mm / inch	TITLE: 2.00mm PITCH TOP ENTRY SMT HEADER
3				DRAWN BY: Karen	12/04-23'	TOLERANCE UNLESS OTHERWISE SPECIFIED .X ± 0.30 .X' ± 1' .XX ± 0.20 .X" ± .XXX ± 0.10 .XX ±	MATERIAL:
2				ENGINEER: Sun	12/04-23'		FINISH:
1	Karen	12/04-23'	ECNT123274 /ECRB123048	CHECKED BY: Eislely	12/04-23'		DRAWING NO. CIE703SB PART NO. CIE7**M*VR0-LF
SYM	NAME	DATE	REVISIONS	APPROVED BY: Eislely	12/04-23'		SCALE 3 / 1 SHEET 1 OF 2

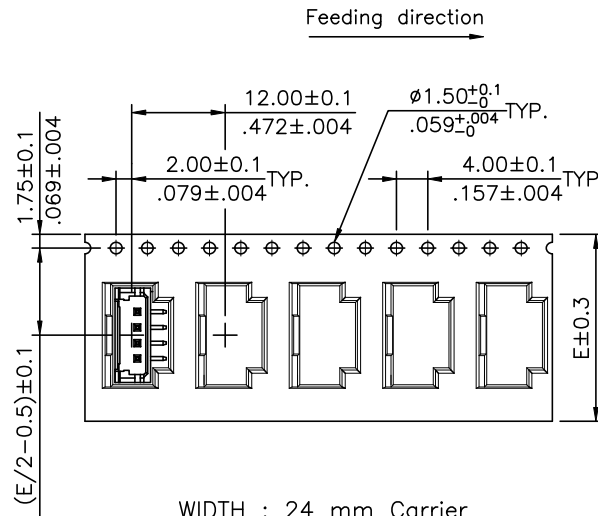
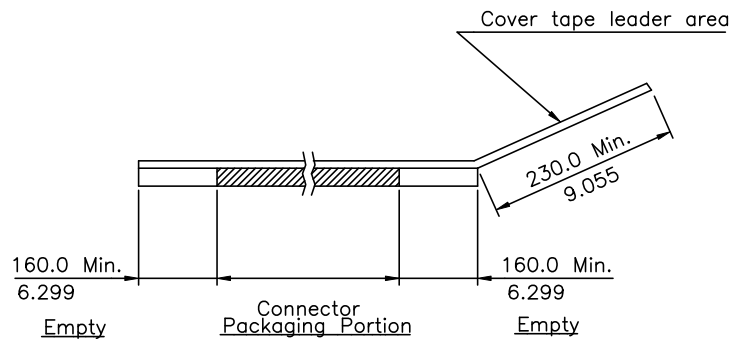
XB 东莞市溪榜电子有限公司
 Switch Connector DONG GUAN XI BANG ELECTRONICS CO., LTD.



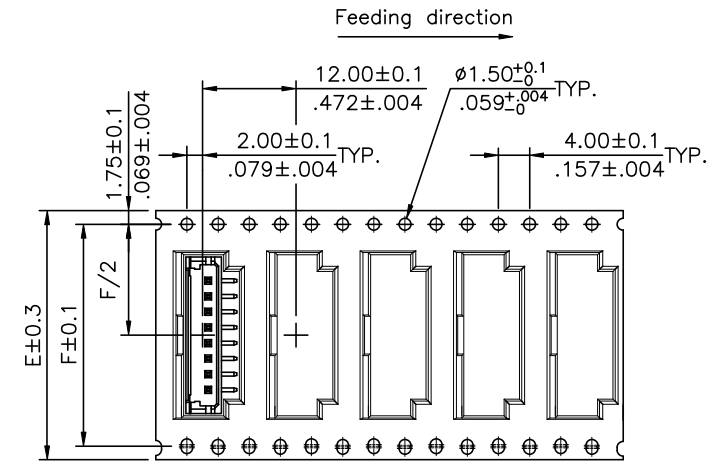
NOTES:

1. 10 sprocket hole pitch cumulative tolerance ± 0.20
2. Carrier camber is within 1 mm in 250 mm.
3. Material: Transparent Anti-static Polysyrene.
4. All dimensions meet EIA-481 requirements.
5. Thickness : 0.50 ± 0.05 mm.
6. Component load per 13" Reel : 800 pcs.

Circuits	Dimension					Packing (Reel/Caton)
	E	F	W1	W2	W3	
2-6	24.0(.945)	—	24.5(.965)	30.5(1.200)	24.5(.965)	8
7-9	32.0(1.260)	28.40(1.118)	32.5(1.280)	38.5(1.516)	32.5(1.280)	6
10-14	44.0(1.732)	40.40(1.596)	44.5(1.752)	50.5(1.988)	44.5(1.752)	5
15	56.0(2.204)	52.50(2.067)	56.5(2.224)	62.5(2.460)	56.5(2.224)	4




WIDTH : 24 mm Carrier



WIDTH : 32,44,56 mm Carrier

RoHS Compliant

4					DATE	UNIT: mm / inch	TITLE: 2.00mm PITCH TOP ENTRY SMT HEADER	 东莞市溪榜电子有限公司 DONG GUAN XI BANG ELECTRONICS CO., LTD.
3				DRAWN BY: Karen	12/04-23'	TOLERANCE UNLESS OTHERWISE SPECIFIED		
2				ENGINEER: Sun	12/04-23'	.X ±	.X' ± 1'	
1				CHECKED BY: Easley	12/04-23'	.XX ±	.X" ±	
SYM	NAME	DATE	REVISIONS	APPROVED BY: Easley	12/04-23'	.XXX ±	.XX" ±	MATERIAL: FINISH:
SCALE								DRAWING NO. CIE703SB
SHEET 2 OF 2								PART NO. CIE7**M*VRO-LF