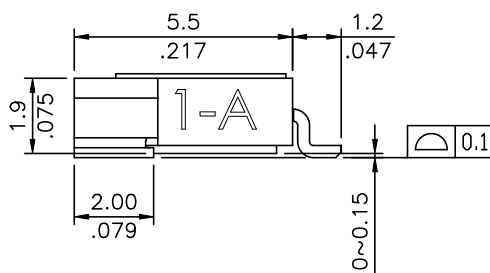
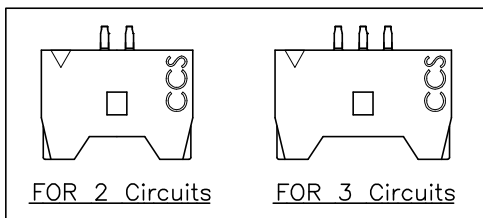


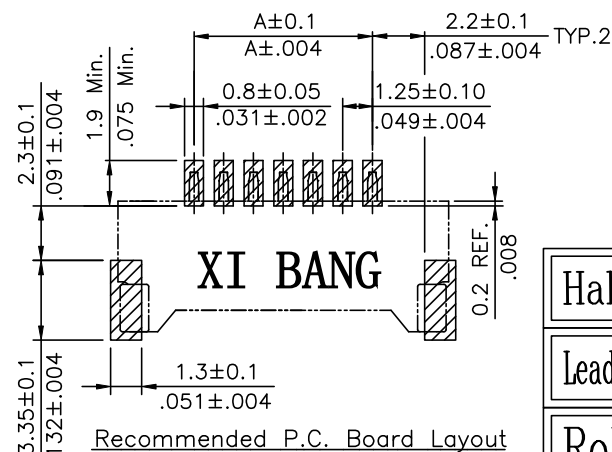
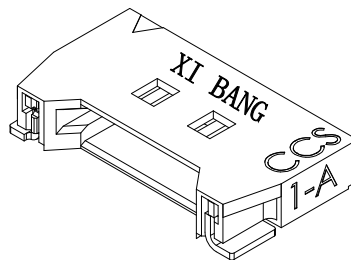
SEC. K-K



DIM A = 1.25 x No. Of Spaces
 DIM B = DIM.A + 6.4
 DIM C = DIM.A + 2.55
 * Available in 2 through 10,12 circuits



Circuits	W
2~3	5.0 (.197)
4~6	6.0 (.236)
7~10,12	10.0 (.394)



Recommended P.C. Board Layout

Halogen-Free
 Lead Free Process
 RoHS Compliant

NOTE:

Material :

- * Base : PA6T With 30% GF.
UL 94V-0, Color Nature
- ⑤ * Contact : Brass
- * Fixed tab : Brass
- * Tab Plating : 100u" Min Matte Tin
Plated over 50u" Nickel
- * For Lead Free IR Reflow Process

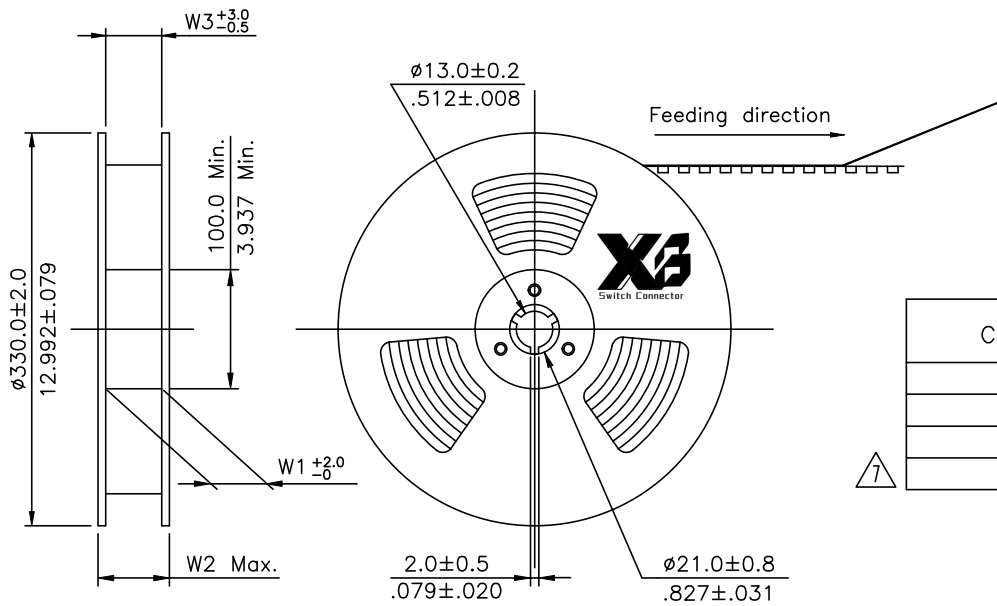
ORDERING CODE

CI42 ** M * H R * -NH
 ① ② ③ ④ ⑤ ⑥ ⑦ ⑧

- ① Series No.
- ② Contact: 02 to 10, 12
- ③ M= SMT TYPE HEADER
- ④ Plating :
1= 3.05μm(120μ") Min. Matte Tin Plated over 1.27um(50μ") Nickel
2= Gold flash over 1.27um(50μ") Nickel
- ⑤ Type : H= Side entry
- ⑥ Packing option:
R= Tape & Reel Packing
- ⑦ Other option:
0= Without Mylar
P= With Mylar
- ⑧ -NH= For Lead Free IR Processes and Halogen-Free

⑨	Amy	1/15-24'	ECNT123179/ECRB123029	DATE	UNIT: mm / inch	TITLE: 1.25mm Side entry SMT Type Connector
⑧	Ellie	12/24-14	ECNT114252/ECRT114090	DRAWN BY: Amy	1/15-24'	MATERIAL: FINISH:
⑦	Karen	1/24-14'	ECNT114011	ENGINEER: Sun	1/15-24'	
⑥	Enya	11/6-13'	ECNT113105/ECRH113004	CHECKED BY: Eisley	1/15-24'	
SYM	NAME	DATE	REVISIONS	APPROVED BY: Eisley	1/15-24'	

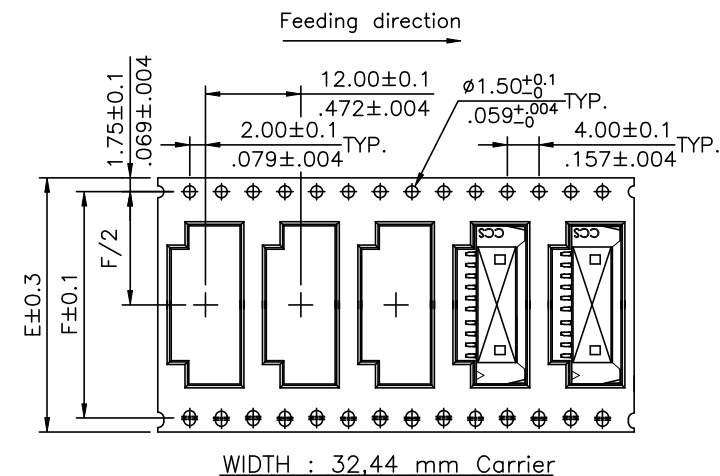
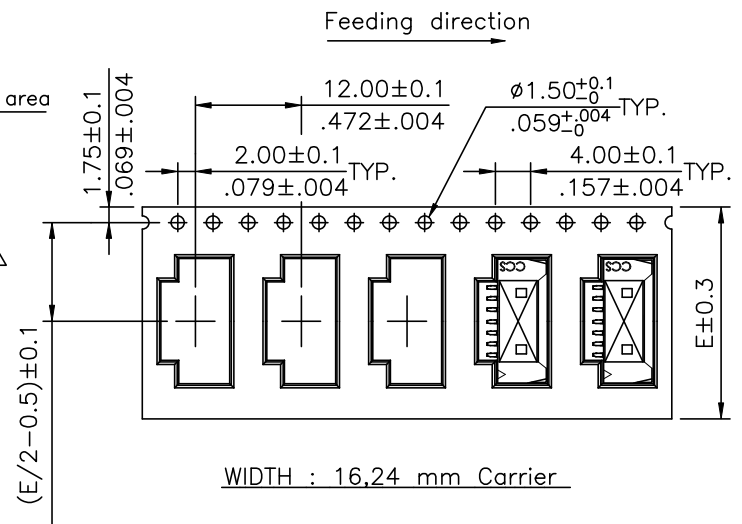
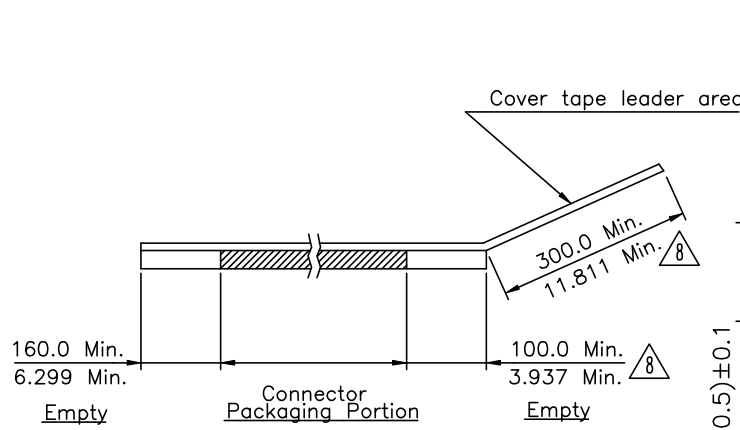
东莞市溪榜电子有限公司 DONG GUAN XI BANG ELECTRONI CS CO., LTD.			
DRAWING NO.	CI4201SI	PART NO.	CI42**M*HR*-NH
SCALE	5 / 1	SHEET	1 OF 2



9 NOTES:

1. Reel Material : HIPS
2. 10 sprocket hole pitch cumulative tolerance ±0.20
3. Carrier camber is within 1 mm in 250 mm.
4. Material : Black, Polystyrene alloy
5. All dimensions meet EIA-481 requirements.
6. Thickness : 0.35±0.05mm.
7. Quantity : 1500 pcs.

Circuits	Dimension					Packing (Reel/Carton)
	E	F	W1	W2	W3	
2~3	16.0(.630)	—	16.5(.650)	22.5(.885)	16.5(.650)	11
4~9	24.0(.945)	—	24.5(.965)	30.5(1.200)	24.5(.965)	9
10	32.0(1.260)	28.40(1.118)	32.5(1.280)	38.5(1.516)	32.5(1.280)	7
12	44.0(1.732)	40.40(1.596)	44.4(1.748)	50.4(1.984)	44.4(1.748)	5



RoHS Compliant

9	Amy	1/15-24'	ECNT123179/ECRB123029		DATE	UNIT: mm / inch	TITLE: 1.25mm Side entry SMT Type Connector
8	Ellie	12/24-14	ECNT114252/ECRT114090	DRAWN BY:	Amy	1/15-24'	
7	Karen	1/24-14'	ECNT114011	ENGINEER:	Sun	1/15-24'	MATERIAL:
6	Enya	11/6-13'	ECNT113105/ECRH113004	CHECKED BY:	Eisley	1/15-24'	
SYM	NAME	DATE	REVISIONS	APPROVED BY:	Eisley	1/15-24'	

X3 东莞市溪榜电子有限公司
Switch Connector DONG GUAN XI BANG ELECTRONICS CO., LTD.

DRAWING NO.	CI4201SI	PART NO.	CI42**M*HR*-NH
SCALE		SHEET	2 OF 2