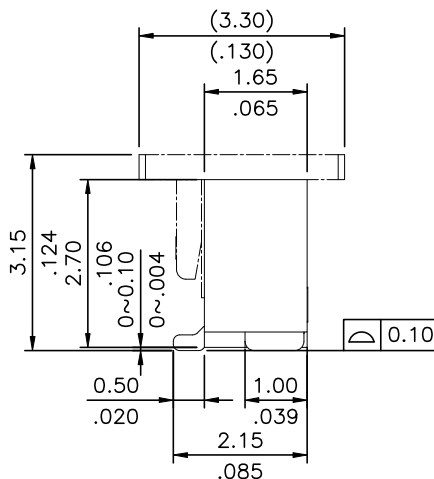
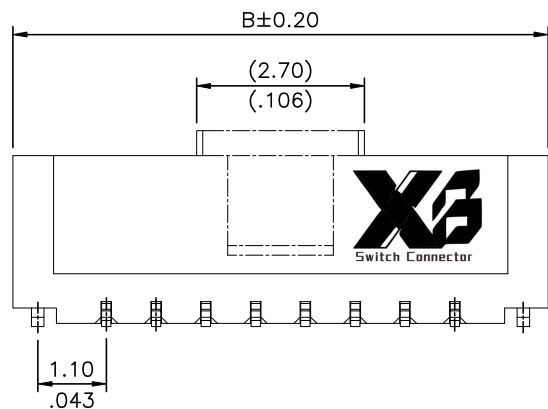
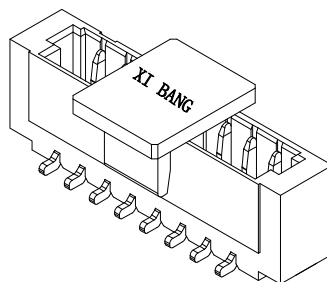
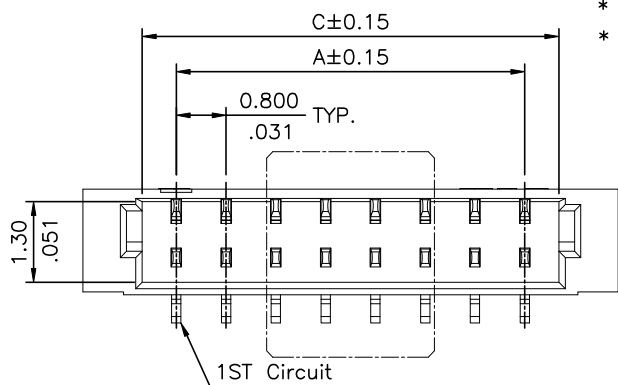


NOTE:

Material :

- * Base : High Temperature plastic UL 94V-0 (Halogen Free)
- * Contact : Copper alloy
- * Fixed tab : Copper alloy with Tin or Gold Plated

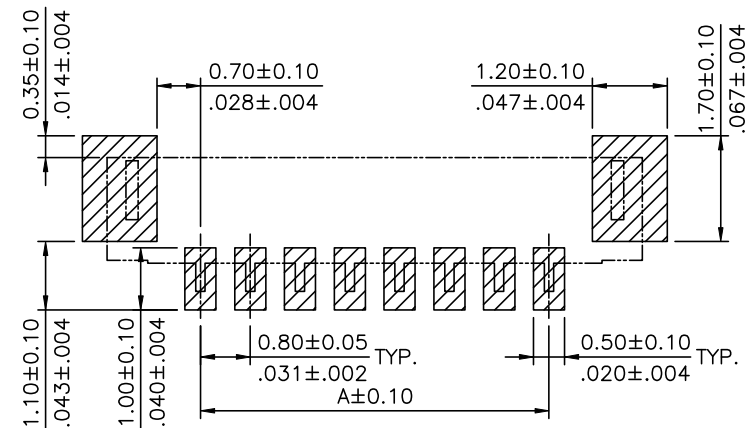


DIM. A = 0.80 x NO. OF SPACES
 DIM. B = DIM. A + 3.0
 DIM. C = DIM. A + 1.1
 * AVAILABLE IN 2 THROUGH 15

ORDERING CODE

C118 ** M * V * * -NH
 ① ② ③ ④ ⑤ ⑥ ⑦ ⑧

- ① Series No.
- ② Contact: 02 to 15
- ③ M= SMT TYPE HEADER
- ④ Plating :
 1= Matte Tin plated over Nickel
 2= Gold flash over 50u" Nickel
- ⑤ Type : V= Top entry
- ⑥ Packing option:
 R= Tape & Reel Packing
- ⑦ Color Option:
 0= Nature
 1= Black
- ⑧ -NH= For Lead Free IR Processes and Halogen-Free




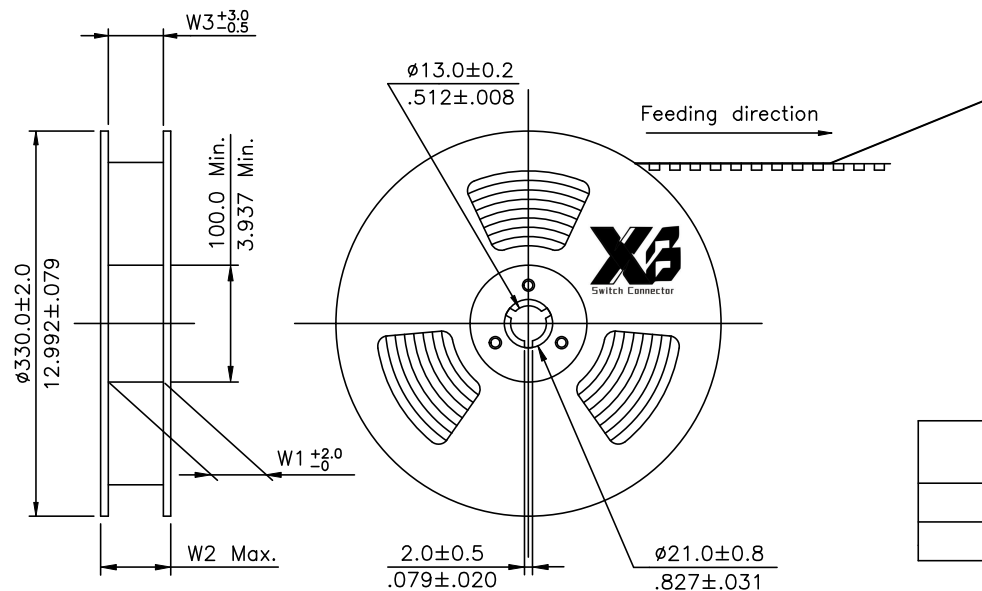
Recommended P.C. Board Layout

Halogen-Free

Lead Free Process

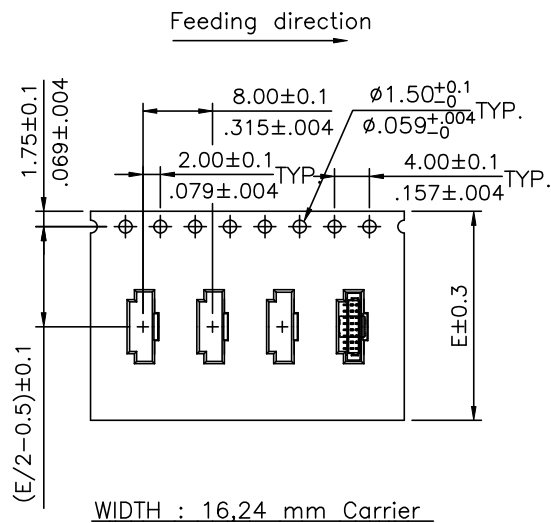
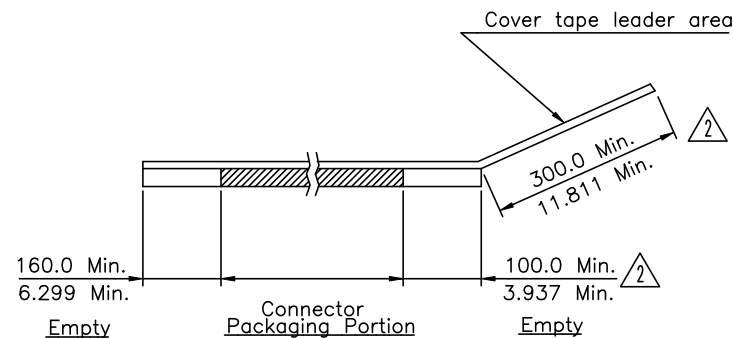
RoHS Compliant

④					DATE	UNIT: mm / inch	TITLE: 0.8mm Pitch WTB SMT V TYPE	 东莞市溪榜电子有限公司 DONG GUAN XI BANG ELECTRONICS CO., LTD.
③	Jack	1/2-24'	ECNT123179/ECRB123029	DRAWN BY: Jack	1/2-24'	TOLERANCE UNLESS OTHERWISE SPECIFIED	MATERIAL:	
②	Ellie	12/24-14'	ECNT114252/ECRT114090	ENGINEER: Sun	1/2-24'	.X ± 0.30/.012 X' ± 1'	FINISH:	DRAWING NO. CI1815SD PART NO. CI18**M*V**-NH
①	Hank	9/2-13'	ECNT113047	CHECKED BY: Easley	1/2-24'	.XX ± 0.20/.008 X' ±	SCALE 8 / 1	SHEET 1 OF 2
SYM	NAME	DATE	REVISIONS	APPROVED BY: Easley	1/2-24'	.XXX ± 0.10/.004 XX' ±		




- NOTE :
- △3 * Reel Material : HIPS
 - * Carrier Material : Color Nature(Clear), Polystyrene alloy
 - * Cover Tape Material : Polyester
 - * Cover Tape Peel Strength : 0.1N – 1.3N
 - * Carrier camber is within 1mm in 100mm
 - △3 * All dimensions meet EIA-481 requirements.
 - * Quantity : 2000 PCS/Reel

Circuits	Dimension				Packing (Reel/Carton)
	E	W1	W2	W3	
2~7	16.0(.630)	16.5(.650)	22.5(.885)	16.5(.650)	11
8~15	24.0(.945)	24.5(.965)	30.5(1.200)	24.5(.965)	9



RoHS Compliant

△4					DATE	UNIT: mm / inch	TITLE: 0.8mm Pitch WTB SMT V TYPE	 东莞市溪榜电子有限公司 DONG GUAN XI BANG ELECTRONICS CO., LTD.
△3	Jack	1/2-24'	ECNT123179/ECRB123029	DRAWN BY:	Jack	1/2-24'	MATERIAL:	
△2	Ellie	12/24-14'	ECNT114252/ECRT114090	ENGINEER:	Sun	1/2-24'	FINISH:	DRAWING NO. CI1815SD
△1	Hank	9/2-13'	ECNT113047	CHECKED BY:	Eisley	1/2-24'		PART NO. CI18**M*V**-NH
SYM	NAME	DATE	REVISIONS	APPROVED BY:	Eisley	1/2-24'		SCALE
								SHEET 2 OF 2