

Note:

* MAT'L: Nylon 66, UL 94V-0

* Mate with CI11 Terminal (P/N: CI11T011PPH)

DIM. A = 1.00 x NO. OF SPACES

DIM. B = DIM. A + 4.0

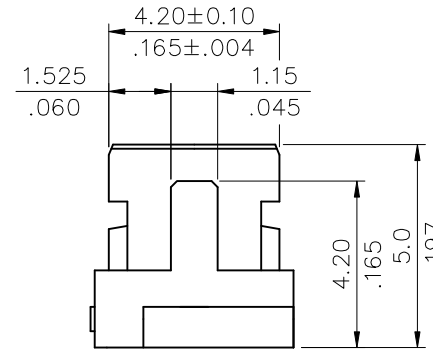
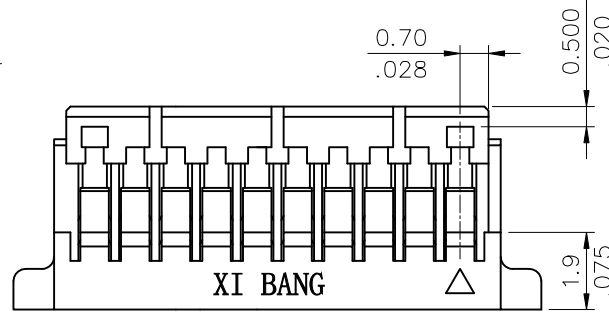
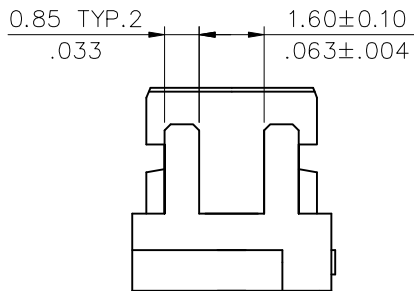
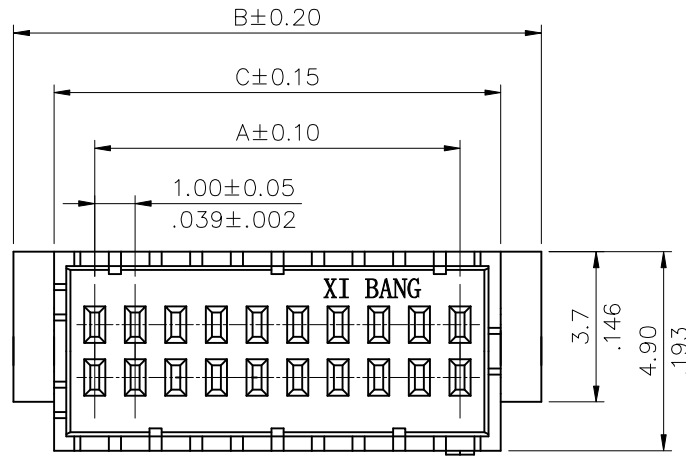
DIM. C = DIM. A + 2.2

△ * AVAILABLE IN 10,12,14,16,20,24,30,40,
50 CIRCUITS

Ordering Code

CI11 ** S D 0*0 -NH
 ① ② ③ ④ ⑤ ⑥

- ① Series No.
- ② No. of Circuits:
- ③ S= Connector housing
- ④ D= Dual Row
- ⑤ Color option:
000= Nature (Standard)
010= Black
- ⑥ -NH= Halogen-Free



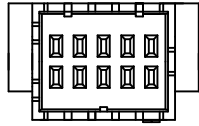
Halogen-Free

RoHS Compliant

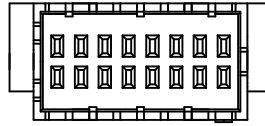
SYM	NAME	DATE	REVISIONS	APPROVED BY:	Eisley	11/14-18'	UNIT: mm / inch	TITLE: 1.00MM(.079") DUAL ROW WIRE TO BOARD CONNECTOR
4							TOLERANCE UNLESS OTHERWISE SPECIFIED	MATERIAL:
3				DRAWN BY:	Sun	11/12-18'		
2	Sun	11/9-18'	ECNT118258	ENGINEER:	Sun	11/12-18'	.XX ± 0.20/.008	.X' ±
1	Sun	9/05-17'	ECRB117036/ECNT17176	CHECKED BY:	Eisley	11/14-18'	.XXX ± 0.10/.004	.XX' ±
				APPROVED BY:	Eisley	11/14-18'		FINISH:

东莞市溪榜电子有限公司
 DONG GUAN XI BANG ELECTRONI CS CO., LTD.

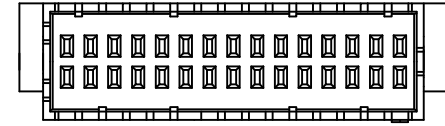
DRAWING NO.	CI1111SC	PART NO.	CI11**SD0*0-NH
SCALE	5 / 1	SHEET	1 OF 2



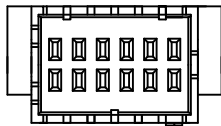
10PIN



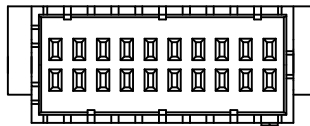
16PIN



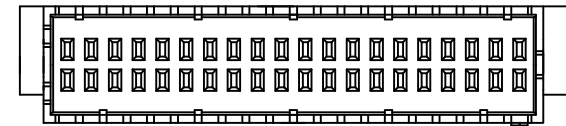
30PIN



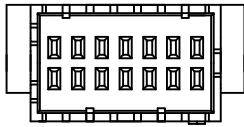
12PIN



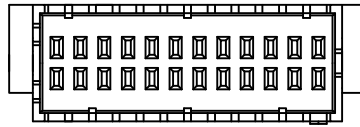
20PIN



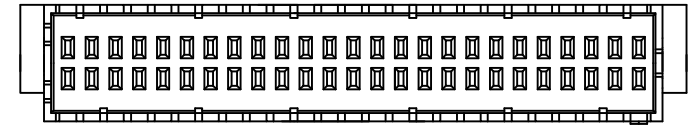
40PIN



14PIN



24PIN



50PIN

Halogen-Free RoHS Compliant

4					DATE	UNIT: mm / inch	TITLE: 1.00MM(.079") DUAL ROW WIRE TO BOARD CONNECTOR
3				DRAWN BY: Sun	11/12-18'	TOLERANCE UNLESS OTHERWISE SPECIFIED	
2	Sun	11/9-18'	ECNT118258	ENGINEER: Sun	11/12-18'	.X ± 0.30/.012 X' ± r'	MATERIAL:
1	Sun	9/05-17'	ECRB117036/ECNT17176	CHECKED BY: Easley	11/14-18'	.XX ± 0.20/.008 .X' ±	
SYM	NAME	DATE	REVISIONS	APPROVED BY: Easley	11/14-18'	.XXX ± 0.10/.004 .XX' ±	FINISH:

东莞市溪榜电子有限公司
DONG GUAN XI BANG ELECTRONI CS CO., LTD.

DRAWING NO.	CI1111SC	PART NO.	CI11**SD0*0-NH
SCALE	3 / 1	SHEET	2 OF 2