

1 2 3 4 5 6 7 8 9

F

E

D

C

B

A

F

E

D

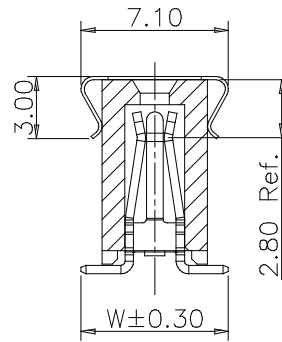
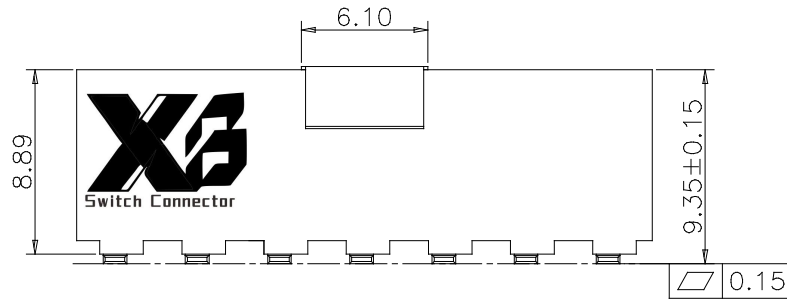
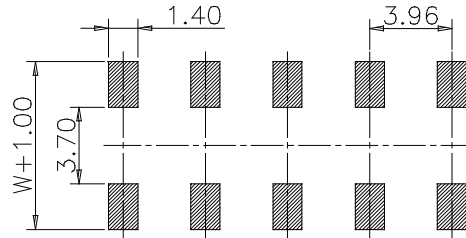
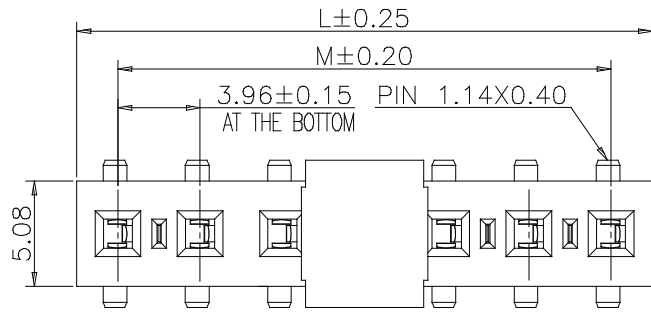
C

B

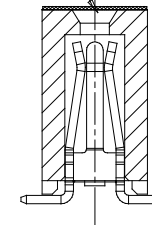
A

Recommended P.C.Board  
Layout  
(Tolerance:±0.05)

Specifications  
Current Rating:7.9Amp  
Insulation Resistance:1000MΩMin.  
Dielectric Withstanding Voltage:1000VAC  
Contact Resistance:20mΩMax.  
Operating Temperature:-40°C to +105°C  
Materials  
Contact Material:Phosphor Bronze  
Insulator Material:High Temperature  
Thermoplastic, UL 94V-0 LCP or the  
equivalent material  
All materials must meet XI BANG  
requirement for environment protection.

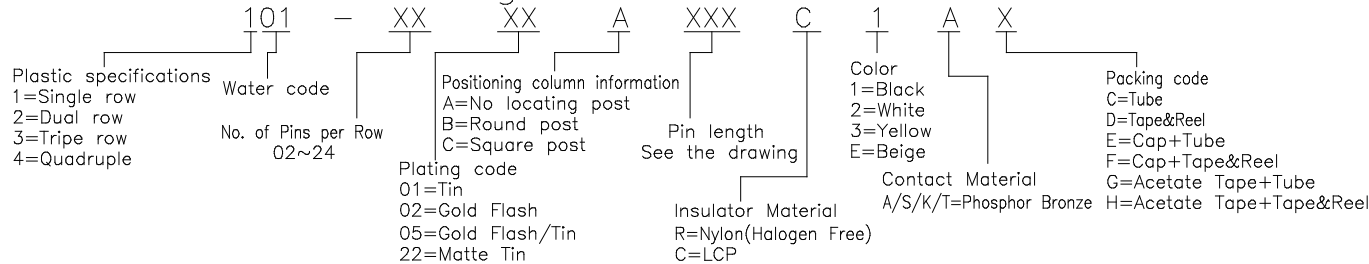


acetate tape  
ø5.00X0.15



No. of PIN/ROW	Dimension Information	
	L	M
02	7.92	3.96
03	11.88	7.92
04	15.84	11.88
05	19.80	15.84
06	23.76	19.80
07	27.72	23.76
08	31.68	27.72
09	35.64	31.68
10	39.60	35.64
11	43.56	39.60
12	47.52	43.56
13	51.48	47.52
14	55.44	51.48
15	59.40	55.44
16	63.36	59.40
17	67.32	63.36
18	71.28	67.32
19	75.24	71.28
20	79.20	75.24
21	83.16	79.20
22	87.12	83.16
23	91.08	87.12
24	95.04	91.08

Ordering Information



**XIB** 东莞市溪榜电子有限公司  
Switch Connector DONG GUAN XI BANG ELECTRONICS CO., LTD

REV. 01	UNIT. mm	SCALE. 3:1	PAGE. 1/1	
---------	----------	------------	-----------	--

GENERAL TOLERANCE	
X.*±5.0*	X.±0.30
.X*±3.0*	.X±0.25
.XX*±2.0*	.XX±0.15
.XXX*±1.0*	.XXX±0.10

DESIGN:	DATE:	DWG. NO. XB-PM-C-396-101
CHECKED:	DATE:	
AUDITED:	DATE:	
APPROVED:	DATE:	

PART NO.	TITLE. 3.96 PITCH POWER SOCKETS SMT TYPE CONNECTOR

1 2 3 4 5 6 7 8 9