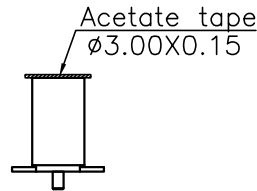
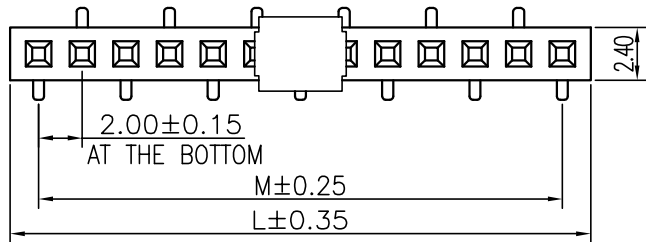
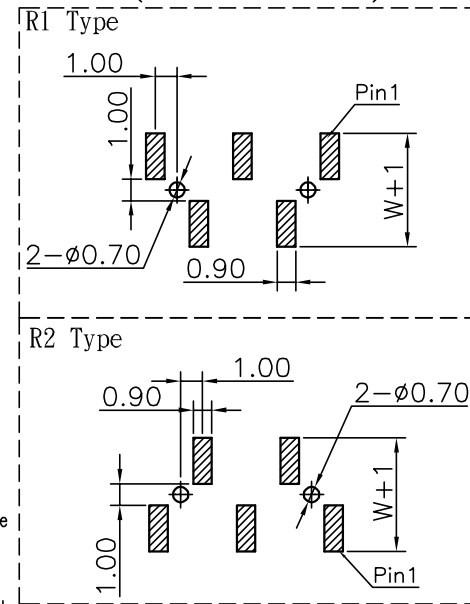
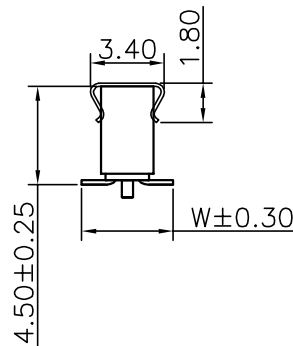
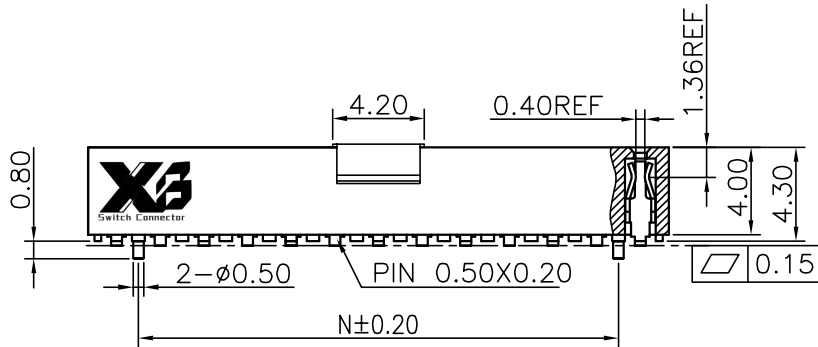


Specifications
 Current Rating:2.0Amp
 Insulation Resistance:1000MΩMin.
 Dielectric Withstanding Voltage:500VAC
 Contact Resistance:20mΩMax.
 Operating Temperature:-40°C to +105°C
 Materials
 Contact Material:Phosphor Bronze
 Insulator Material:
 Nylon(High temperature resistance),
 LCP(High temperature resistance),
 UL 94V-0
 All materials must meet XI BANG
 hazardous substances control standards.



Recommended P.C.Board Layout
 (Tolerance:±0.05)



| No. of PIN/ROW | Dimension Information | | |
|----------------|-----------------------|-------|-------|
| | M | L | N |
| 02 | 2.00 | 4.60 | -- |
| 03 | 4.00 | 6.60 | 2.00 |
| 04 | 6.00 | 8.60 | 4.00 |
| 05 | 8.00 | 10.60 | 6.00 |
| 06 | 10.00 | 12.60 | 8.00 |
| 07 | 12.00 | 14.60 | 10.00 |
| 08 | 14.00 | 16.60 | 12.00 |
| 09 | 16.00 | 18.60 | 14.00 |
| 10 | 18.00 | 20.60 | 16.00 |
| 11 | 20.00 | 22.60 | 18.00 |
| 12 | 22.00 | 24.60 | 20.00 |
| 13 | 24.00 | 26.60 | 22.00 |
| 14 | 26.00 | 28.60 | 24.00 |
| 15 | 28.00 | 30.60 | 26.00 |
| 16 | 30.00 | 32.60 | 28.00 |
| 17 | 32.00 | 34.60 | 30.00 |
| 18 | 34.00 | 36.60 | 32.00 |
| 19 | 36.00 | 38.60 | 34.00 |
| 20 | 38.00 | 40.60 | 36.00 |
| 21 | 40.00 | 42.60 | 38.00 |
| 22 | 42.00 | 44.60 | 40.00 |
| 23 | 44.00 | 46.60 | 42.00 |
| 24 | 46.00 | 48.60 | 44.00 |
| 25 | 48.00 | 50.60 | 46.00 |
| 26 | 50.00 | 52.60 | 48.00 |
| 27 | 52.00 | 54.60 | 50.00 |
| 28 | 54.00 | 56.60 | 52.00 |
| 29 | 56.00 | 58.60 | 54.00 |
| 30 | 58.00 | 60.60 | 56.00 |
| 31 | 60.00 | 62.60 | 58.00 |
| 32 | 62.00 | 64.60 | 60.00 |
| 33 | 64.00 | 66.60 | 62.00 |
| 34 | 66.00 | 68.60 | 64.00 |
| 35 | 68.00 | 70.60 | 66.00 |
| 36 | 70.00 | 72.60 | 68.00 |
| 37 | 72.00 | 74.60 | 70.00 |
| 38 | 74.00 | 76.60 | 72.00 |
| 39 | 76.00 | 78.60 | 74.00 |
| 40 | 78.00 | 80.60 | 76.00 |

Ordering Information

101 - XX XX X XXX C 1 S X

Plastic specifications
 1=Single row
 2=Dual row
 3=Tripe row
 4=Quadruple

Water code

Positioning column information
 A=No locating post
 B=Round post
 C=Square post

Plating code
 01=Tin
 02=Gold Flash
 05=Gold Flash/Tin
 22=Matte Tin

No. of Pins per Row
 02~40

Pin length
 See the drawing

Insulator Material
 R=Nylon(Halogen Free)
 C=LCP

Color
 1=Black
 2=White
 3=Yellow
 E=Beige

Contact Material
 A/S/K/T=Phosphor Bronze

Packing code
 A=Box
 B=Tray
 C=Tube
 D=Tape&Reel
 E=Cap+Tube
 F=Cap+Tape&Reel
 G=Acetate Tape+Tube
 H=Acetate Tape+Tape&Reel

XB 东莞市溪榜电子有限公司
 DONG GUAN XI BANG ELECTRONICS CO., LTD.

REV. 01 UNIT. mm SCALE. 3:1 PAGE. 1/1

| GENERAL TOLERANCE | |
|-------------------|-----------|
| X.*±5.0° | X.±0.30 |
| .X*±3.0° | .X±0.25 |
| .XX*±2.0° | .XX±0.15 |
| .XXX*±1.0° | .XXX±0.10 |

| | | |
|------------|-------|----------------------------|
| DESIGNED: | DATE: | DWG. NO. XB-PM-C-20-101 |
| CHECKED: | DATE: | |
| CO SIGNED: | DATE: | |
| APPROVED: | DATE: | |

| |
|----------|
| PART NO. |
|----------|

TITLE:
 2.00 FEMALE HEADER
 SINGLE ROW SMT TYPE
 BASE 4.30H