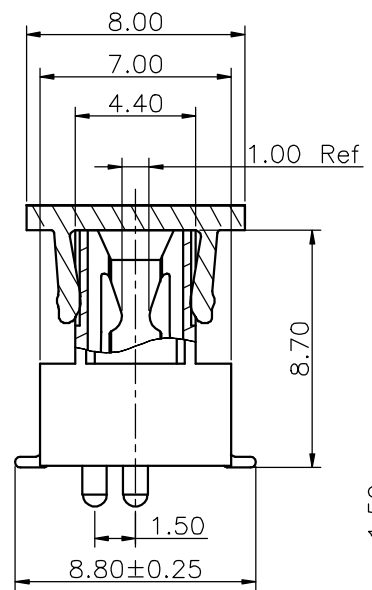
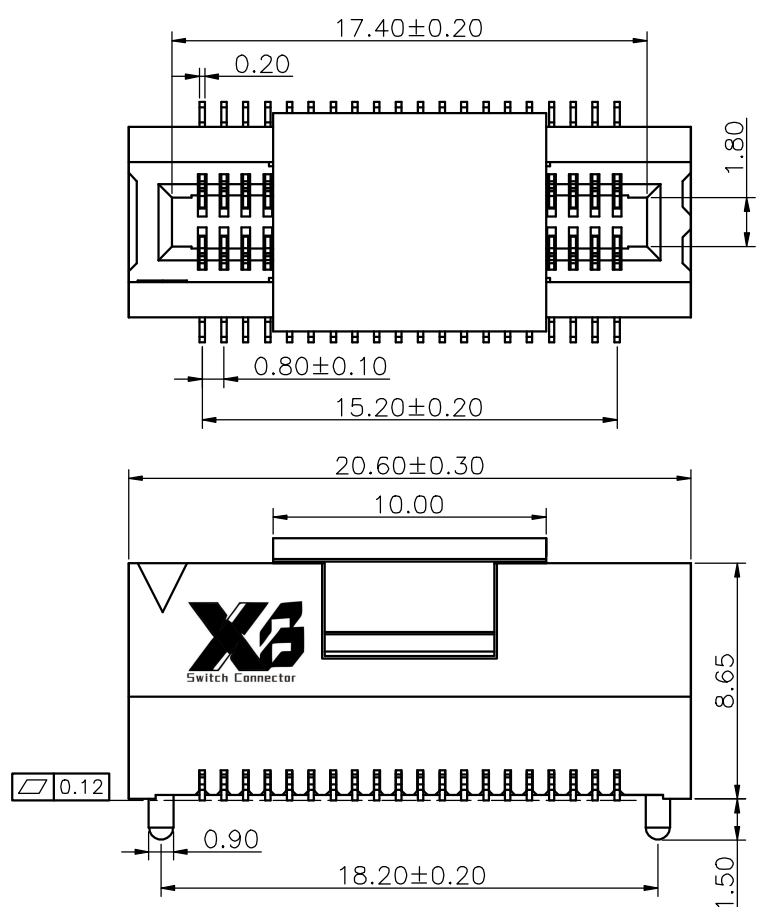
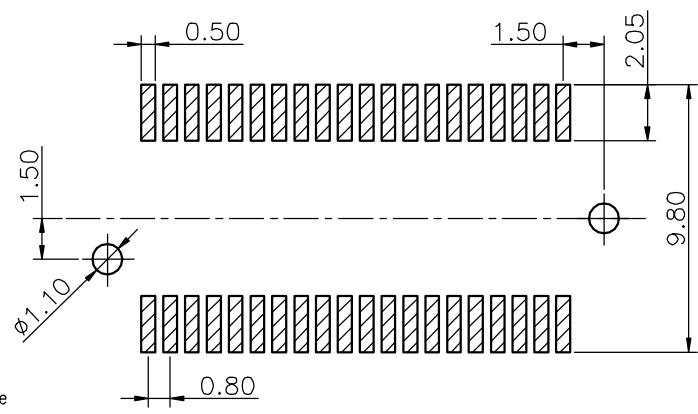


1 2 3 4 5 6 7 8 9



**Specifications**  
 Current Rating:0.5Amp  
 Insulation Resistance:1000MΩMin.  
 Dielectric Withstanding Voltage:300VAC  
 Contact Resistance:40mΩMax.  
 Operating Temperature:-40°C to +105°C  
 Materials  
 Contact Material:Phosphor Bronze  
 Insulator Material:High Temperature Thermoplastic, UL 94V-0 LCP or the equivalent material  
 All materials must meet XI BANG hazardous substances control standards.

Recommended P.C.Board Layout  
 (Tolerance:±0.05)



### Ordering Information

C LBC202 - 20 XX B XXX C

Plastic specifications  
 1=Single row  
 2=Dual row  
 3=Tripe row  
 4=Quadruple

Water code

No. of Pins per Row  
 20

Positioning column information  
 B=Round post

Pin length  
 See the drawing

Plating code  
 02=Gold Flash  
 05=Gold Flash/Tin  
 38=Gold 10u"/Matte Tin 100u"

Insulator Material  
 C=LCP

Color  
 1=Black  
 2=White  
 3=Yellow  
 E=Beige

Contact Material  
 A/S/K/T=Phosphor Bronze

Packing code  
 C=Tube  
 D=Tape&Reel  
 E=Cap+Tube  
 F=Cap+Tape&Reel

**XB** 东莞市溪榜电子有限公司  
 DONG GUAN XI BANG ELECTRONICS CO., LTD.

GENERAL TOLERANCE		DESIGNED:	DATE:	DWG. NO. XB-CLBC-202	TITLE. 0.8mm PITCH PCI SMT TYPE
X. ±5.0'	X. ±0.30	CHECKED:	DATE:		
.X' ±3.0'	.X ±0.25	CO SIGEND:	DATE:	PART NO.	
.XX' ±2.0'	.XX ±0.15	APPROVED:	DATE:		
.XXX' ±1.0'	.XXX ±0.10				

REV.	UNIT.	SCALE.	PAGE.	
01	mm	4:1	1/1	

1 2 3 4 5 6 7 8 9