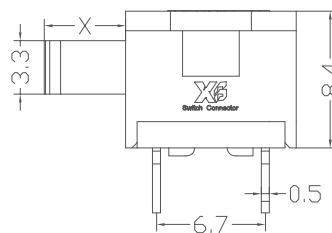
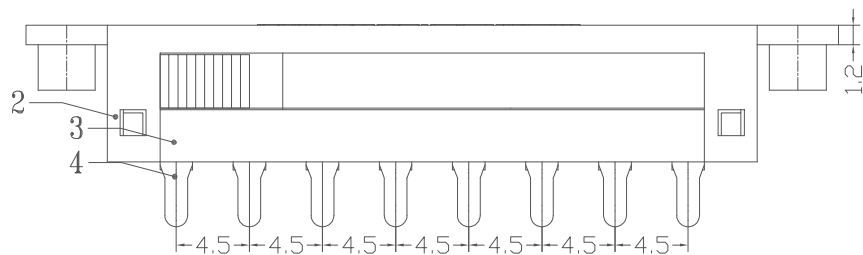


SCHEMATIC (NON-SHORTING)



SPECIFICATIONS

|                       |                      |
|-----------------------|----------------------|
| Rating                | 3A 250V AC;6A 125 AC |
| FUNCTION              | 2P-7T                |
| Contact Resistance    | 50MΩ Max             |
| Insulation Resistance | 100MΩ Min            |
| Operating Force       | 400gf±100gf          |
| Operating Life        | 10,000cycle          |

| Model No               | X (mm) |
|------------------------|--------|
| XB-T26-K2722-16P-E-G2  | 2mm    |
| XB-T26-K2722-16P-E-G3  | 3mm    |
| XB-T26-K2722-16P-E-G4  | 4mm    |
| XB-T26-K2722-16P-E-G5  | 5mm    |
| XB-T26-K2722-16P-E-G6  | 6mm    |
| XB-T26-K2722-16P-E-G7  | 7mm    |
| XB-T26-K2722-16P-E-G8  | 8mm    |
| XB-T26-K2722-16P-E-G9  | 9mm    |
| XB-T26-K2722-16P-E-G10 | 10mm   |

| NO | PARTS      | MATERIALS  | Q' TY | FINISH    |
|----|------------|------------|-------|-----------|
| 7  | STEEL BALL | STEEL      | 1     | NATURAL   |
| 6  | SPRING     | STEEL WIRE | 1     | NATURAL   |
| 5  | CONTACT    | BRASS      | 1     | Ag PLATED |
| 4  | TERMINAL   | BRASS      | 16    | Ag PLATED |
| 3  | CASE       | PA66       | 1     | BLACK     |
| 2  | COVER      | PA66       | 1     | BALCK     |
| 1  | KNOB       | PA66       | 1     | BALCK     |

| ITEM NO. | DESCRIPTION | DRAWN | DATE |
|----------|-------------|-------|------|
| 6        | 新增Rating选项  |       |      |
| 5        | 更新样式        |       |      |
| 4        | 更新Rating    |       |      |
| 3        | 更新Rating    |       |      |
| 2        | 新增SPEC      |       |      |
| 1        | 更新封面        |       |      |

**XBG** 东莞市溪榜电子有限公司  
DONG GUAN XI BANG ELECTRONICS CO., LTD.

TOLERANCE UNLESS OTHERWISE STATED:  
 Up to 5 ±0.2  
 Above 5 -15 ±0.3  
 Above 15 -30 ±0.4  
 Above 30 -50 ±0.5  
 Angle ±0.3

3RD. ANGEL'S

UNITS MM

|              |          |           |                    |      |
|--------------|----------|-----------|--------------------|------|
| DRAWN BY:    | DATE     | MAT'L     | TI'TLE             |      |
| PENG GAO     | 01/29/24 |           |                    |      |
| CHECKED BY:  | DATE     | FINISH    | MODLE              |      |
| ZENG CHEN    | 01/29/24 |           |                    |      |
| APPROVED BY: | DATE     | SCALE     | DWG NO.            | SIZE |
| ZENG CHEN    | 01/29/24 | 1:1       | XB-T26-K2722-16P-E | A4   |
|              |          | SHEET NO. | PART NO.           | VER  |
|              |          | 1 of 1    | XB-T26-K2722-16P-E |      |