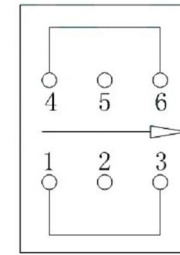
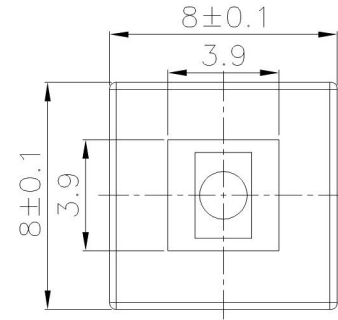
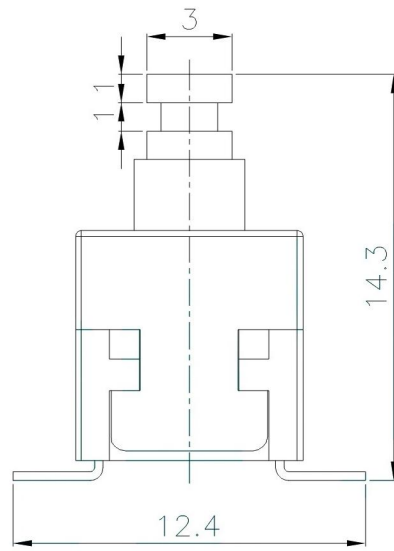
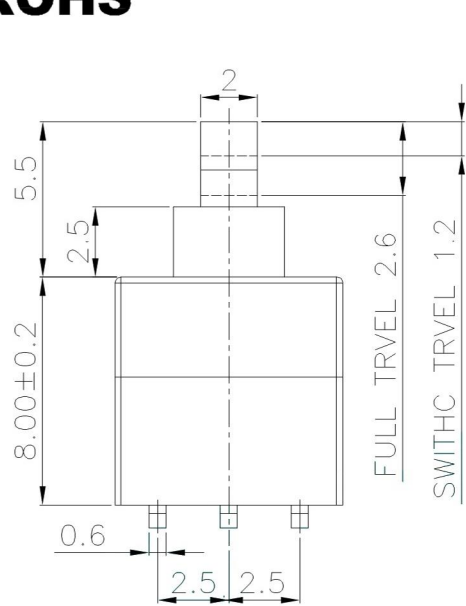
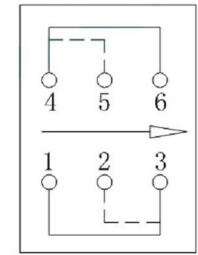


ROHS

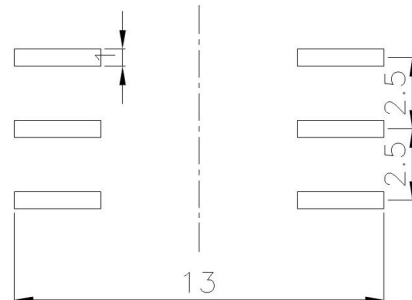
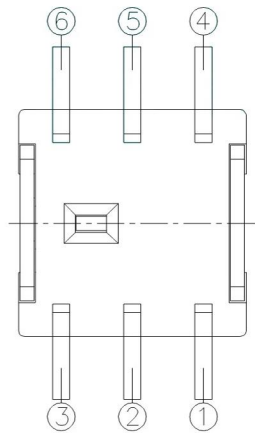


Free



Push

Circuit Diagram



PCB Layout(Pattern Side)

SPECIFICATION (INITIAL)

| | |
|-------------------------------|-----------------------------|
| RATING: | DC 50V 0.5A |
| CONTACT RESISTANCE: | Not more than 30mΩ |
| INSULATION RESISTANCE: | 500MΩ at 500V DC |
| WITHSTAND VOLTAGE: | AC 500V for 1 min |
| OPERATION FORCE: | 250gf ±50gf |
| SWITCHING LIFE: | 10K Cycles(6-10c/m loading) |

| NO. | Operating Type | Part No. |
|-----|-----------------------|--------------|
| 1 | Push To Lock | XB-8080-M-L1 |
| 2 | Push No Lock | XB-8080-M-N1 |
| 3 | Push No Sound No Lock | XB-8080-M-NN |

| ITEM | PART NAME | TER'NO. | QTY. | MATERIAL | FINISHING |
|------|----------------|---------|------|-----------------|----------------|
| ⑧ | Terminal | — | 6 | Brass strip | Plating silver |
| ⑦ | Contact | — | 2 | Phosphor bronze | Plating silver |
| ⑥ | Securing glue | — | 2 | PA66 | Black |
| ⑤ | Spring | — | 1 | SUS | Natural |
| ④ | Base | — | 1 | PBT | Black |
| ③ | Crochet Needle | — | 1 | SUS | Natural |
| ② | Cover | — | 1 | POM | White |
| ① | KNOB | — | 1 | POM | Blue |

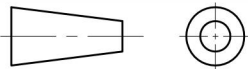
The material contained in this drawing is the property of XiBang. Any use other than that specifically authorized by XiBang is prohibited. The above drawing IS subjected to change for improvement without prior notice.



东莞市溪榜电子有限公司
DONG GUAN XI BANG ELECTRONICS CO., LTD

TITLE : XB Puhs Button switch

MODEL : XB-8080-M 按键开关贴片六脚 2组2路 8X8MM



| | | | | | |
|---------------|-------|---------------|------|----------------|-----------|
| UNIT : MM | DWN. | ZENQ. CHEN | DATE | TOLERANCE | ANGLE TOL |
| SCALE : 2 : 1 | CHK'D | DONG. PANG | DATE | <=1.5mm ± 0.1 | ± 2° |
| VERSION | APPD. | FEI. LONG. HE | DATE | > 1.5mm ± 0.2 | |
| 01 | | | | >=10.0mm ± 0.3 | |

| NO. | PART NAME | MATERIAL | QTY. | FINISHING |
|-----|-------------|-------------|------|-----------|
| 7 | HOOK NEEDLE | STEEL WIRE | 1 | NATURAL |
| 6 | SPRING | STEEL WIRE | 1 | NATURAL |
| 5 | CONTACT | PBS | 1 | Ag PLATED |
| 4 | TERMINAL | BRASS STRIP | 6 | Ag PLATED |
| 3 | CASE | NYLON | 1 | BLACK |
| 2 | COVER | NYLON | 1 | BEIGE |
| 1 | KNOB | POM | 1 | WHITE |
| NO. | PART NAME | MATERIAL | QTY. | FINISHING |