

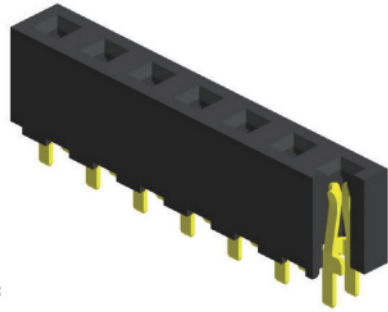
1 2 3 4 5 6 7 8 9

F

F

**Specifications**

Current Rating : 7.9 Ampere  
 Insulation Resistance : 1000 MΩ Min  
 Dielectric Withstanding : 1500V AC  
 Contact Resistance : 20 mΩ Max  
 Operating Temperature : -40°C to +105°C



**Materials**

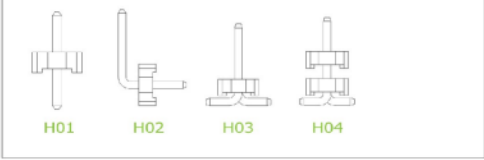
Contact Material : Phosphor Bronze  
 Insulation Material : High Temperature Thermoplastic, 94V-0 LCP

All materials must meet Greennconn's requirements for environmental protectic

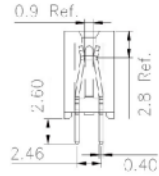
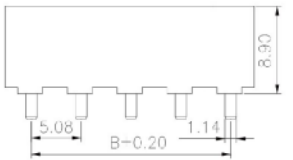
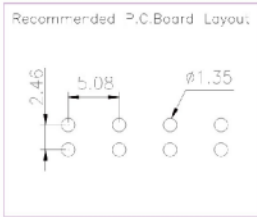
E

E

**Mating with**



P.S. : Suggested mating pin length : 3.8 ~ 8.5 mm



D

D

C

C

No. of Pins/Row	Dimension Information		No. of Pins/Row	Dimension Information	
	A	B		A	B
02	10.16	5.08	11	55.88	50.80
03	15.24	10.16	12	60.96	55.88
04	20.32	15.24	13	66.04	60.96
05	25.40	20.32	14	71.12	66.04
06	30.48	25.40	15	76.20	71.12
07	35.56	30.48	16	81.28	76.20
08	40.64	35.56	17	86.36	81.28
09	45.72	40.64	18	91.44	86.36
10	50.80	45.72	19	96.52	91.44
			20	101.60	96.52

B

B

A

A

**XB** 东莞市溪榜电子有限公司  
 Switch Connector DONG GUAN XI BANG ELECTRONICS CO., LTD.

REV.	UNIT.	SCALE.	PAGE.
01	mm	5:1	1/1

GENERAL TOLERANCE	
X' ± 5.0'	X ± 0.30
.X' ± 3.0'	.X ± 0.25
.XX' ± 2.0'	.XX ± 0.15
.XXX' ± 1.0'	.XXX ± 0.10

DESIGN:	DATE:
CHECKED:	DATE:
AUDITED:	DATE:
APPROVED:	DATE:

DWG. NO.	TITLE.
XB-PM-A-508-110	
PART NO.	2.00 FEMALE HEADER SINGLE ROW DIP TYPE BASE 4.30H
XB-PM-A-508-110	

1 2 3 4 5 6 7 8 9