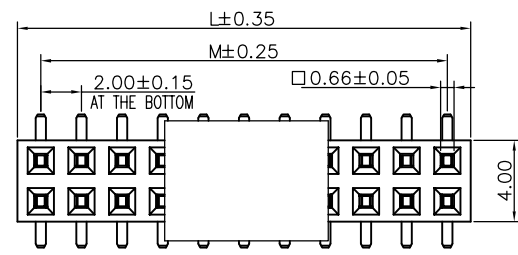


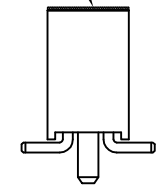
1 2 3 4 5 6 7 8 9

F  
E  
D  
C  
B  
A

F  
E  
D  
C  
B  
A

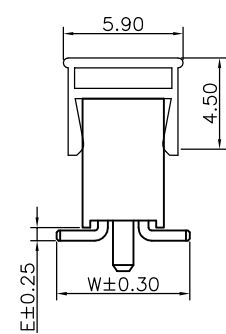
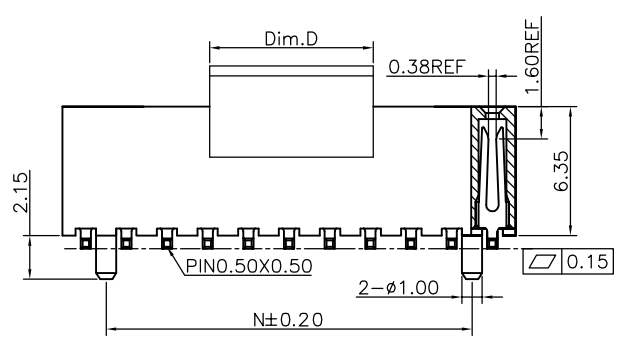


Acetate tape  
ø4.00X0.15

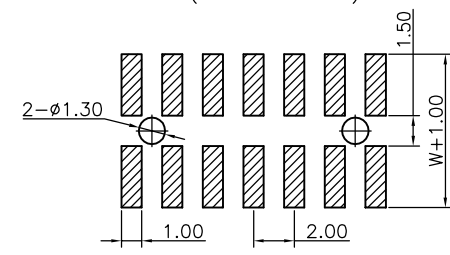


Dim.D	NOTE
4.00mm	03PIN
8.05mm	04~40PIN

Specifications  
 Current Rating:2.0Amp  
 Insulation Resistance:1000MΩMin.  
 Dielectric Withstanding Voltage:500VAC  
 Contact Resistance:20mΩMax.  
 Operating Temperature:-40°C to +105°C  
 Materials  
 Contact Material:Phosphor Bronze  
 Insulator Material:  
 Nylon(High temperature resistance),  
 LCP(High temperature resistance),  
 UL 94V-0  
 All materials must meet Greenconn  
 hazardous substances control standards.



Recommended P.C.Board  
 Layout  
 (Tolerance:±0.05)



No. of PIN/ROW	Dimension Information		
	M	L	N
03	4.00	6.30	2.00
04	6.00	8.30	4.00
05	8.00	10.30	6.00
06	10.00	12.30	8.00
07	12.00	14.30	10.00
08	14.00	16.30	12.00
09	16.00	18.30	14.00
10	18.00	20.30	16.00
11	20.00	22.30	18.00
12	22.00	24.30	20.00
13	24.00	26.30	22.00
14	26.00	28.30	24.00
15	28.00	30.30	26.00
16	30.00	32.30	28.00
17	32.00	34.30	30.00
18	34.00	36.30	32.00
19	36.00	38.30	34.00
20	38.00	40.30	36.00
21	40.00	42.30	38.00
22	42.00	44.30	40.00
23	44.00	46.30	42.00
24	46.00	48.30	44.00
25	48.00	50.30	46.00
26	50.00	52.30	48.00
27	52.00	54.30	50.00
28	54.00	56.30	52.00
29	56.00	58.30	54.00
30	58.00	60.30	56.00
31	60.00	62.30	58.00
32	62.00	64.30	60.00
33	64.00	66.30	62.00
34	66.00	68.30	64.00
35	68.00	70.30	66.00
36	70.00	72.30	68.00
37	72.00	74.30	70.00
38	74.00	76.30	72.00
39	76.00	78.30	74.00
40	78.00	80.30	76.00

### Ordering Information

**XB-PM-C-20-215**

- Plastic specifications
  - 1=Single row
  - 2=Dual row
  - 3=Tripe row
  - 4=Quadruple
- Water code
- No. of Pins per Row 02~40
- Positioning column information
  - A=No locating post
  - B=Round post
  - C=Square post
- Plating code
  - 01=Tin
  - 02=Gold Flash
  - 05=Gold Flash/Tin
  - 22=Matte Tin
- Pin length See the drawing
- Insulator Material
  - R=Nylon(Halogen Free)
  - C=LCP
- Color
  - 1=Black
  - 2=White
  - 3=Yellow
  - E=Beige
- Contact Material
  - A/S/K/T=Phosphor Bronze
- Packing code
  - A=Box
  - B=Tray
  - C=Tube
  - D=Tape&Reel
  - E=Cap+Tube
  - F=Cap+Tape&Reel
  - G=Acetate Tape+Tube
  - H=Acetate Tape+Tape&Reel

**XB** 东莞市溪榜电子有限公司  
 Switch Connector DONG GUAN XI BANG ELECTRONICS CO., LTD.

REV.	UNIT.	SCALE.	PAGE.
01	mm	4:1	1/1

GENERAL TOLERANCE	
X.*±5.0°	X.±0.30
.X*±3.0°	.X±0.25
.XX*±2.0°	.XX±0.15
.XXX*±1.0°	.XXX±0.10

DESIGNED:	DATE:
CHECKED:	DATE:
CO SIGNED:	DATE:
APPROVED:	DATE:

DWG. NO.	XB-PM-C-20-215
PART NO.	XB-PM-C-20-215

TITLE.	2.00 FEMALE HEADER DUAL ROWS SMT TYPE CONNECTOR
--------	---

1 2 3 4 5 6 7 8 9



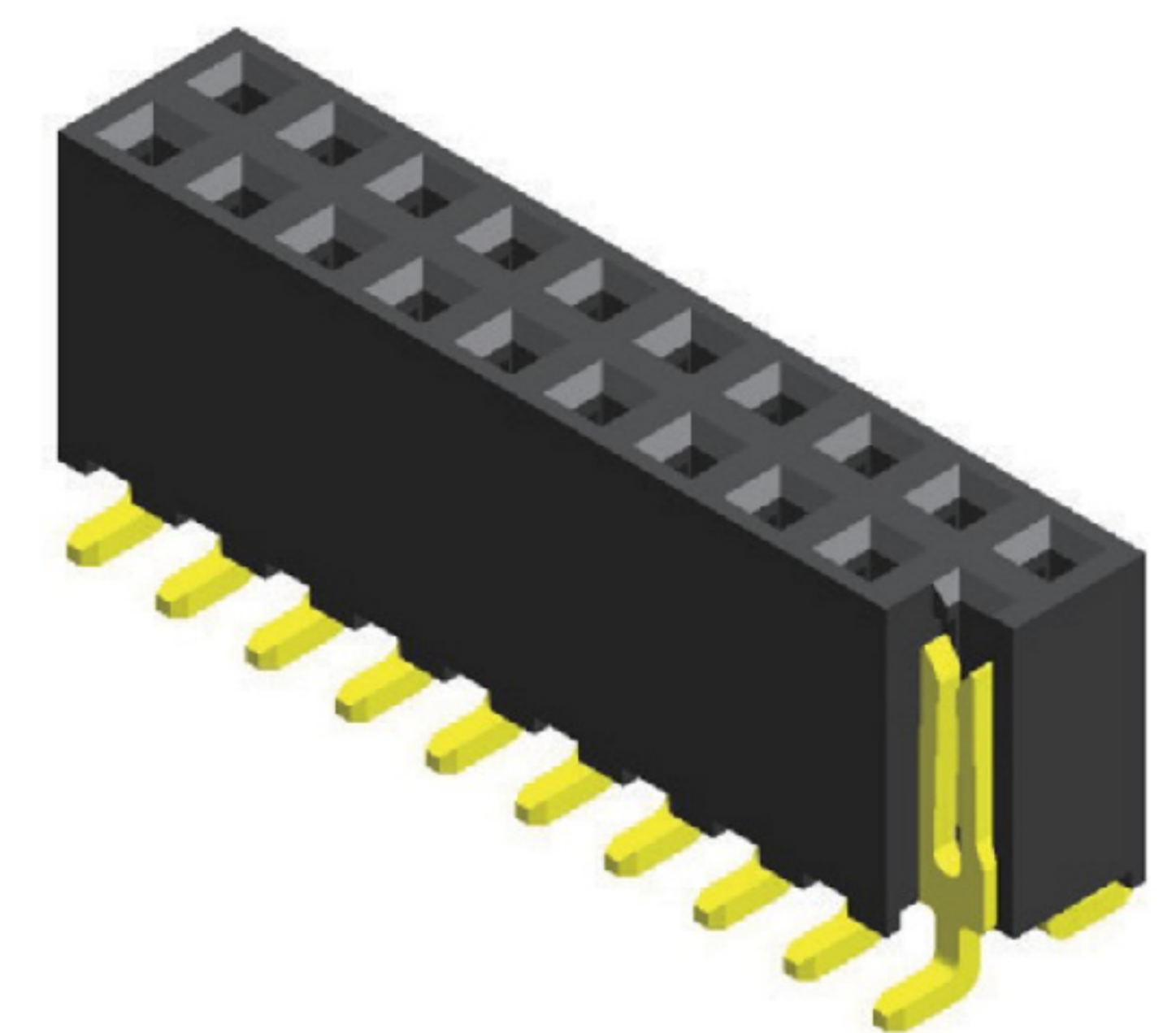
1 2 3 4 5 6 7 8 9

F  
E  
D  
C  
B  
A

F  
E  
D  
C  
B  
A

**Specifications**

Current Rating : 2.0 Ampere  
 Insulation Resistance : 1000 MΩ Min  
 Dielectric Withstanding : 500V AC  
 Contact Resistance : 20 mΩ Max  
 Operating Temperature : -40°C to +105°C

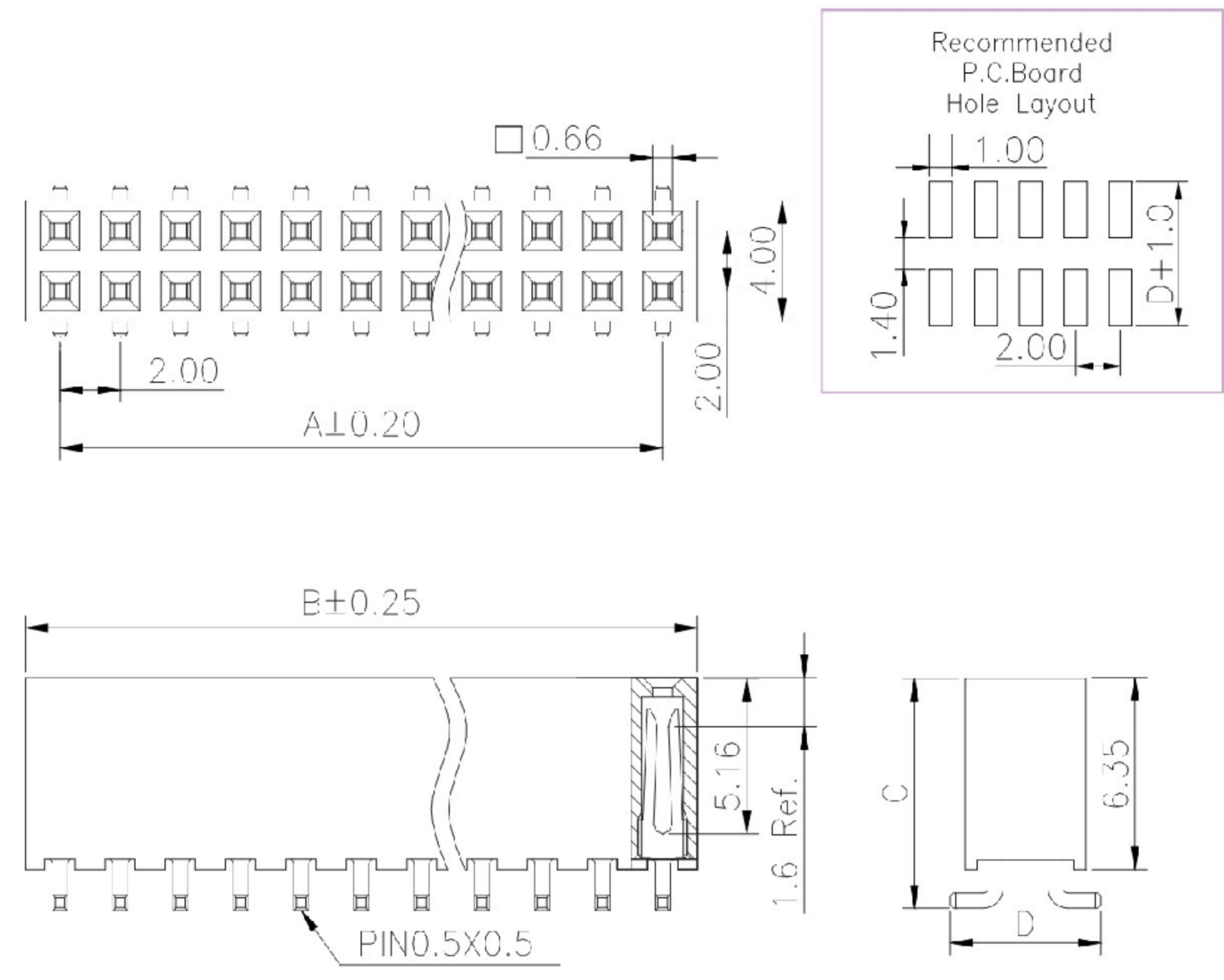
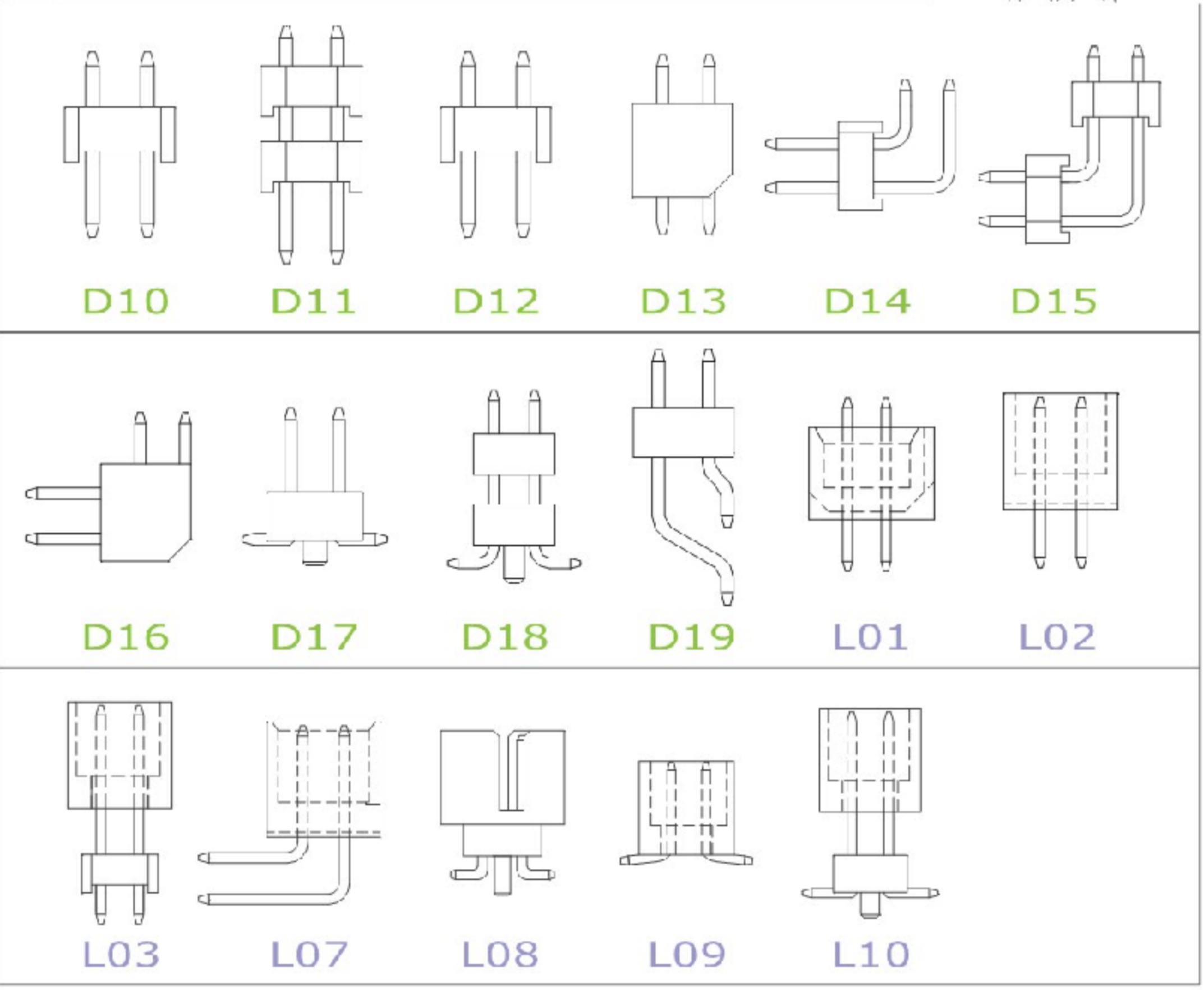


**Materials**

Contact Material : Phosphor Bronze  
 Insulation Material : High Temperature Thermoplastic, 94V-0 LCP

All materials must meet Greenconn's requirements for environmental protection.

**Mating with**



P.S. : Suggested mating pin length : 3.0 ~ 4.9 mm

\* For Coded Dimension Not Inside The Table, Please Refer To "Ordering Information"

No. of Pins/Row	Dimension Information		No. of Pins/Row	Dimension Information		No. of Pins/Row	Dimension Information		No. of Pins/Row	Dimension Information	
	A	B		A	B		A	B		A	B
02	2.00	4.30	11	20.00	22.30	21	40.00	42.30	31	60.00	62.30
03	4.00	6.30	12	22.00	24.30	22	42.00	44.30	32	62.00	64.30
04	6.00	8.30	13	24.00	26.30	23	44.00	46.30	33	64.00	66.30
05	8.00	10.30	14	26.00	28.30	24	46.00	48.30	34	66.00	68.30
06	10.00	12.30	15	28.00	30.30	25	48.00	50.30	35	68.00	70.30
07	12.00	14.30	16	30.00	32.30	26	50.00	52.30	36	70.00	72.30
08	14.00	16.30	17	32.00	34.30	27	52.00	54.30	37	72.00	74.30
09	16.00	18.30	18	34.00	36.30	28	54.00	56.30	38	74.00	76.30
10	18.00	20.30	19	36.00	38.30	29	56.00	58.30	39	76.00	78.30
			20	38.00	40.30	30	58.00	60.30	40	78.00	80.30

**XB** 东莞市溪榜电子有限公司  
 DONG GUAN XI BANG ELECTRONICS CO., LTD.  
 Switch Connector

REV. 01 UNIT. mm SCALE. 5:1 PAGE. 1/1

**GENERAL TOLERANCE**

X'±5.0'	X±0.30
.X'±3.0'	.X±0.25
.XX'±2.0'	.XX±0.15
.XXX'±1.0'	.XXX±0.10

DESIGN:	DATE:
CHECKED:	DATE:
AUDITED:	DATE:
APPROVED:	DATE:

DWG. NO. XB-PM-C-20-215  
 PART NO. XB-PM-C-20-215

TITLE. 2.00 FEMALE HEADER SINGLE ROW DIP TYPE BASE 4.30H

1 2 3 4 5 6 7 8 9