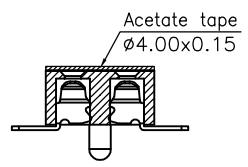
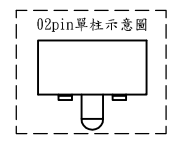
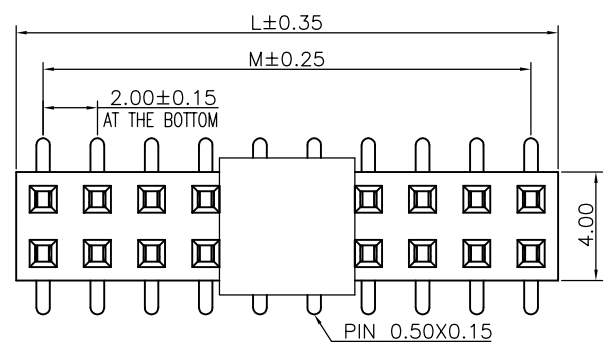


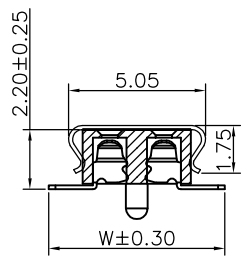
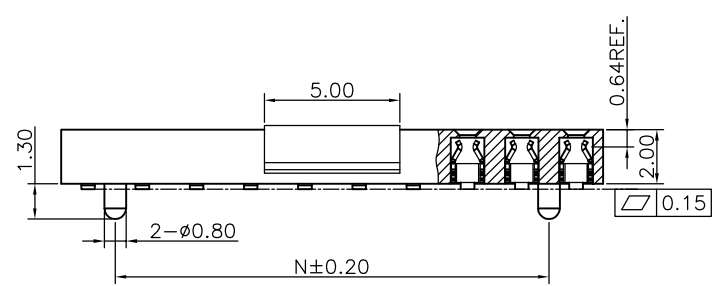
1 2 3 4 5 6 7 8 9

F  
E  
D  
C  
B  
A

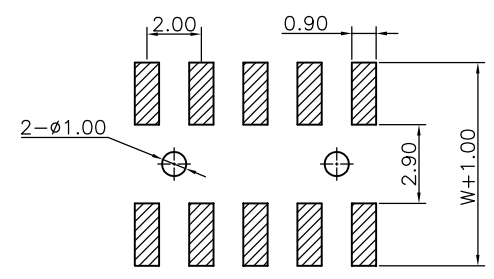
F  
E  
D  
C  
B  
A



Specifications  
 Current Rating:2.0Amp  
 Insulation Resistance:1000MΩMin.  
 Dielectric Withstanding Voltage:500VAC  
 Contact Resistance:20mΩMax.  
 Operating Temperature:-40°C to +105°C  
 Materials  
 Contact Material:Phosphor Bronze  
 Insulator Material:  
 Nylon(High temperature resistance),  
 LCP(High temperature resistance),  
 UL 94V-0  
 All materials must meet Greenconn  
 hazardous substances control standards.



Recommended P.C.Board  
 Layout  
 (Tolerance:±0.05)



No. of PIN/ROW	Dimension Information		
	M	L	N
02	2.00	4.00	---
03	4.00	6.00	2.00
04	6.00	8.00	4.00
05	8.00	10.00	6.00
06	10.00	12.00	8.00
07	12.00	14.00	10.00
08	14.00	16.00	12.00
09	16.00	18.00	14.00
10	18.00	20.00	16.00
11	20.00	22.00	18.00
12	22.00	24.00	20.00
13	24.00	26.00	22.00
14	26.00	28.00	24.00
15	28.00	30.00	26.00
16	30.00	32.00	28.00
17	32.00	34.00	30.00
18	34.00	36.00	32.00
19	36.00	38.00	34.00
20	38.00	40.00	36.00
21	40.00	42.00	38.00
22	42.00	44.00	40.00
23	44.00	46.00	42.00
24	46.00	48.00	44.00
25	48.00	50.00	46.00
26	50.00	52.00	48.00
27	52.00	54.00	50.00
28	54.00	56.00	52.00
29	56.00	58.00	54.00
30	58.00	60.00	56.00
31	60.00	62.00	58.00
32	62.00	64.00	60.00
33	64.00	66.00	62.00
34	66.00	68.00	64.00
35	68.00	70.00	66.00
36	70.00	72.00	68.00
37	72.00	74.00	70.00
38	74.00	76.00	72.00
39	76.00	78.00	74.00
40	78.00	80.00	76.00

### Ordering Information

**XB-PM-C-20-206**

- Plastic specifications
  - 1=Single row
  - 2=Dual row
  - 3=Tripe row
  - 4=Quadruple
- Water code
- No. of Pins per Row 02~40
- Positioning column information
  - A=No locating post
  - B=Round post
  - C=Square post
- Pin length See the drawing
- Insulator Material
  - R=Nylon(Halogen Free)
  - C=LCP
- Color
  - 1=Black
  - 2=White
  - 3=Yellow
  - E=Beige
- Contact Material
  - A/S/K/T=Phosphor Bronze
- Packing code
  - A=Box
  - B=Tray
  - C=Tube
  - D=Tape&Reel
  - E=Cap+Tube
  - F=Cap+Tape&Reel
  - G=Acetate Tape+Tube
  - H=Acetate Tape+Tape&Reel
- Plating code
  - 01=Tin
  - 02=Gold Flash
  - 05=Gold Flash/Tin
  - 22=Matte Tin

**XB** 东莞市溪榜电子有限公司  
 Switch Connector DONG GUAN XI BANG ELECTRONICS CO., LTD.

REV.	UNIT.	SCALE.	PAGE.
01	mm	5:1	1/1

GENERAL TOLERANCE	
X.*±5.0°	X.±0.30
.X*±3.0°	.X±0.25
.XX*±2.0°	.XX±0.15
.XXX*±1.0°	.XXX±0.10

DESIGNED:  
 CHECKED:  
 CO SIGNED:  
 APPROVED:

DATE:  
 DATE:  
 DATE:  
 DATE:

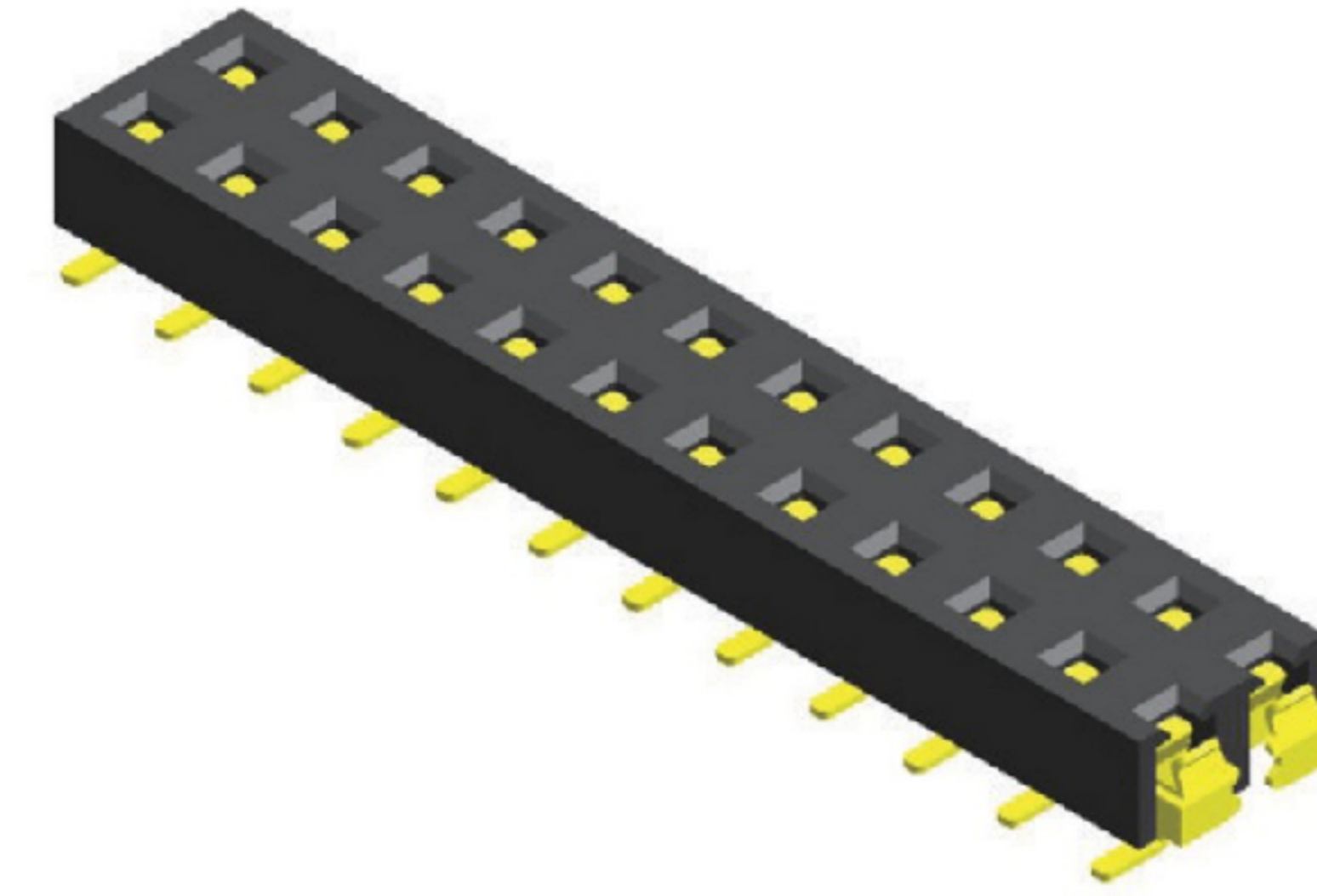
DWG. NO.  
**XB-PM-C-20-206**  
 PART NO.  
**XB-PM-C-20-206**

TITLE.  
 2.00 FEMALE HEADER  
 DUAL ROWS SMT TYPE  
 HOUSING

1 2 3 4 5 6 7 8 9

### Specifications

Current Rating : 2.0 Ampere  
 Insulation Resistance : 1000 MΩ Min  
 Dielectric Withstanding : 500V AC  
 Contact Resistance : 20 mΩ Max  
 Operating Temperature : -40°C to +105°C

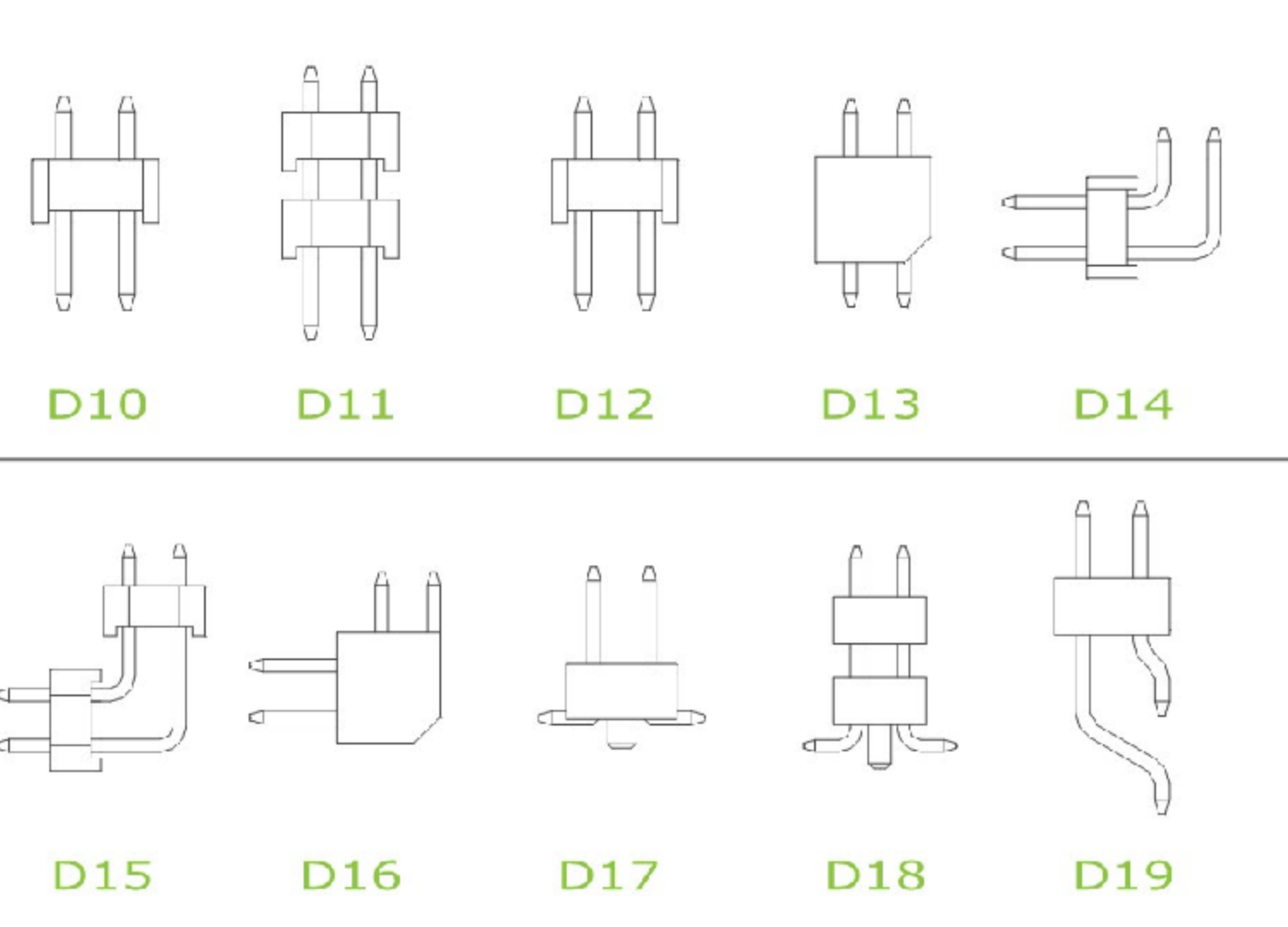


### Materials

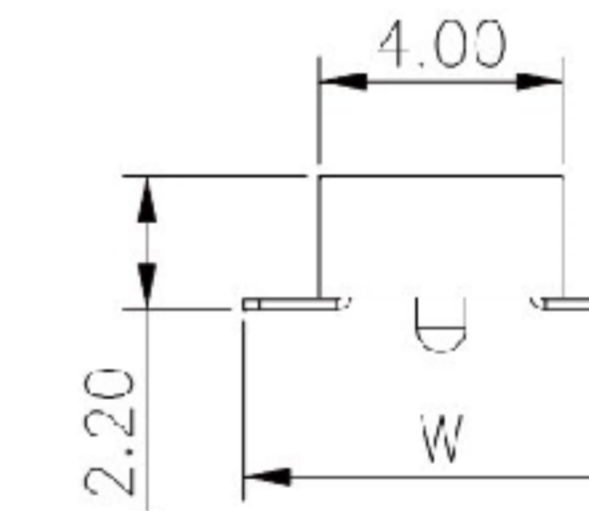
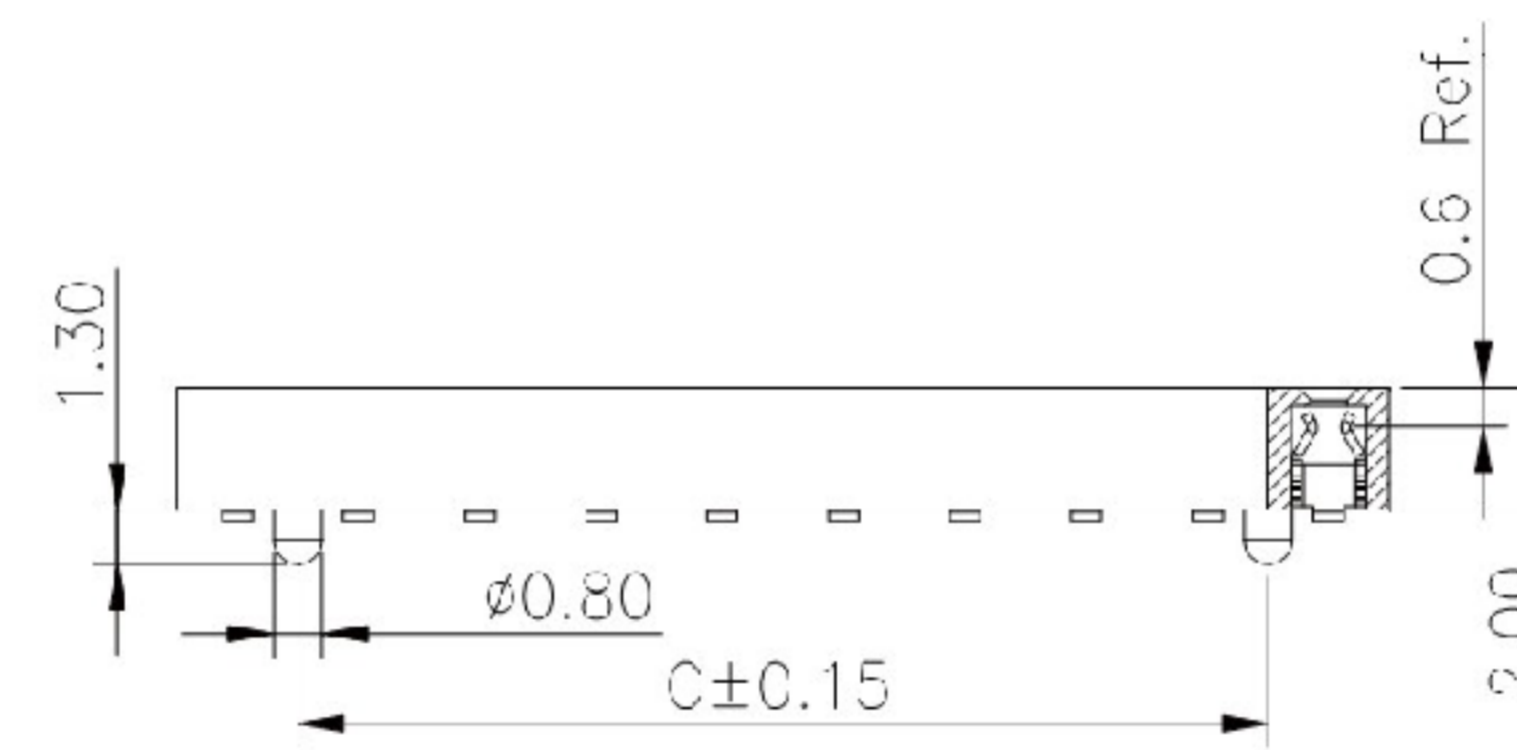
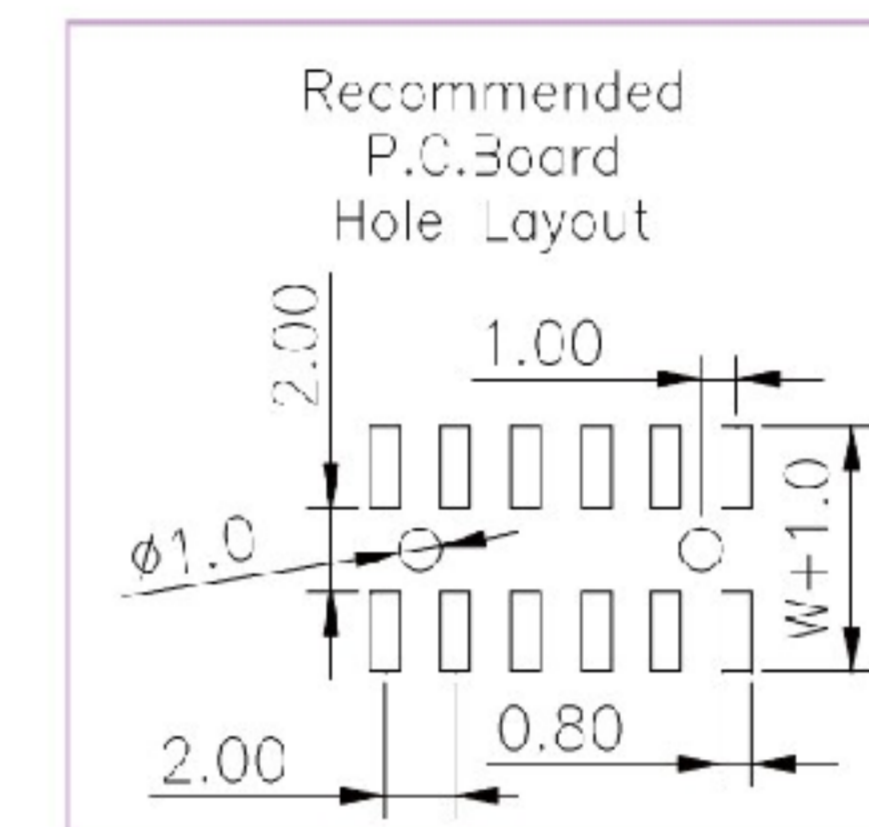
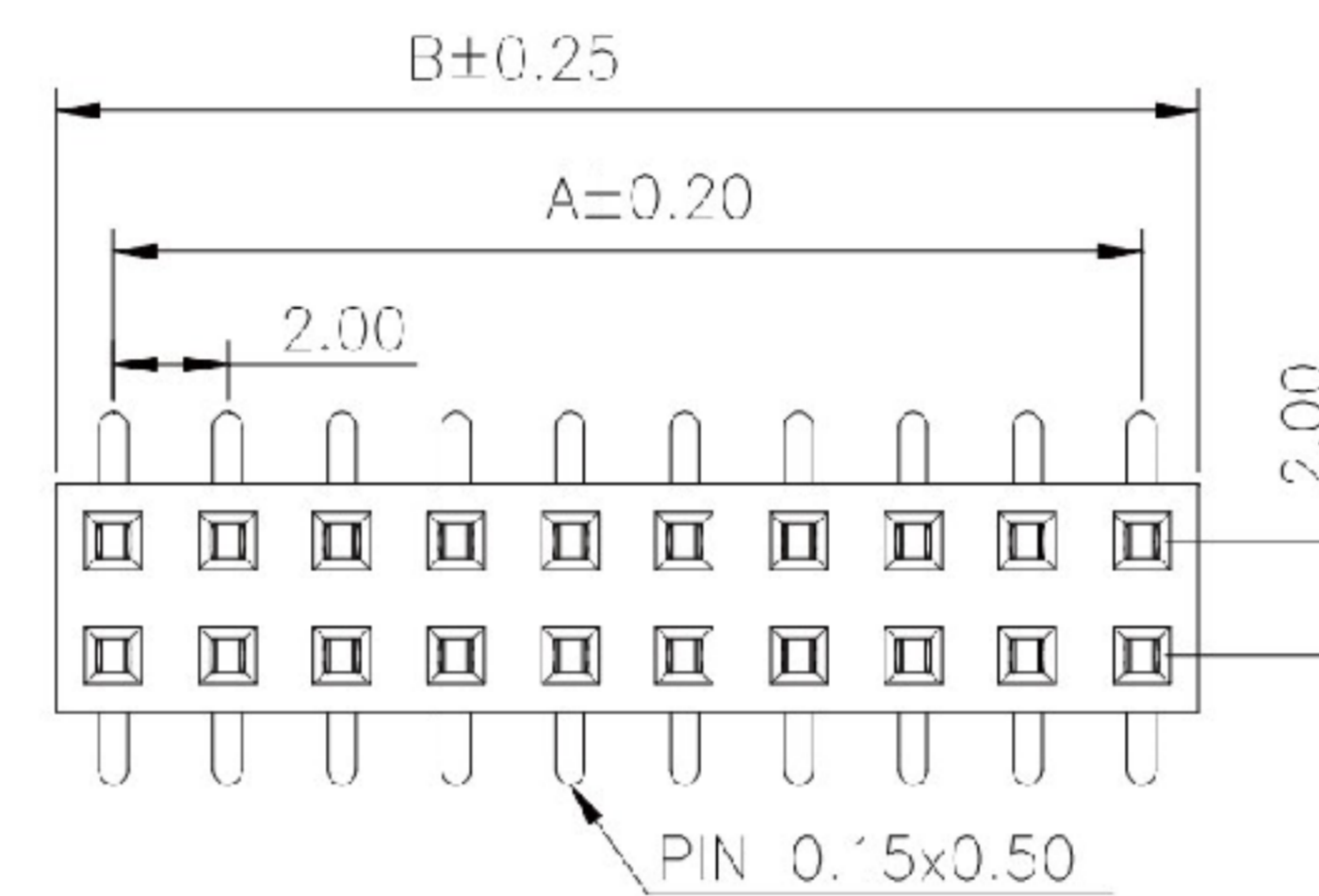
Contact Material : Phosphor Bronze  
 Insulation Material : High Temperature Thermoplastic, 94V-0 Nylon

All materials must meet Greenconn's requirements for environmental protection.

### Mating with



P.S. : Suggested mating pin length : 1.6 ~ 2.0 mm



\* For Coded Dimension Not Inside The Table, Please Refer To "Ordering Information"

No. of Pins/Row	Dimension Information			No. of Pins/Row	Dimension Information			No. of Pins/Row	Dimension Information			No. of Pins/Row	Dimension Information		
	A	B	C		A	B	C		A	B	C		A	B	C
03	4.00	6.00	2.00	11	20.00	22.00	18.00	21	40.00	42.00	38.00	31	60.00	62.00	58.00
04	6.00	8.00	4.00	12	22.00	24.00	20.00	22	42.00	44.00	40.00	32	62.00	64.00	60.00
05	8.00	10.00	6.00	13	24.00	26.00	22.00	23	44.00	46.00	42.00	33	64.00	66.00	62.00
06	10.00	12.00	8.00	14	26.00	28.00	24.00	24	46.00	48.00	44.00	34	66.00	68.00	64.00
07	12.00	14.00	10.00	15	28.00	30.00	26.00	25	48.00	50.00	46.00	35	68.00	70.00	66.00
08	14.00	16.00	12.00	16	30.00	32.00	28.00	26	50.00	52.00	48.00	36	70.00	72.00	68.00
09	16.00	18.00	14.00	17	32.00	34.00	30.00	27	52.00	54.00	50.00	37	72.00	74.00	70.00
10	18.00	20.00	16.00	18	34.00	36.00	32.00	28	54.00	56.00	52.00	38	74.00	76.00	72.00
				19	36.00	38.00	34.00	29	56.00	58.00	54.00	39	76.00	78.00	74.00
				20	38.00	40.00	36.00	30	58.00	60.00	56.00	40	78.00	80.00	76.00

**东莞市溪榜电子有限公司**  
 DONG GUAN XI BANG ELECTRONICS CO., LTD.

REV. 01 UNIT. mm SCALE. 5:1 PAGE. 1/1

GENERAL TOLERANCE	
X' ± 5.0'	X ± 0.30
.X' ± 3.0'	.X ± 0.25
.XX' ± 2.0'	.XX ± 0.15
.XXX' ± 1.0'	.XXX ± 0.10

DESIGN:	DATE:
CHECKED:	DATE:
AUDITED:	DATE:
APPROVED:	DATE:

DWG. NO. XB-PM-C-20-206  
 PART NO. XB-PM-C-20-206

TITLE. 2.00 FEMALE HEADER SINGLE ROW DIP TYPE BASE 4.30H