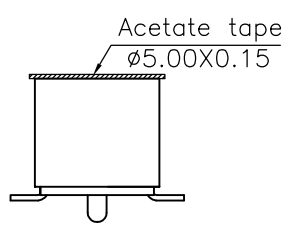
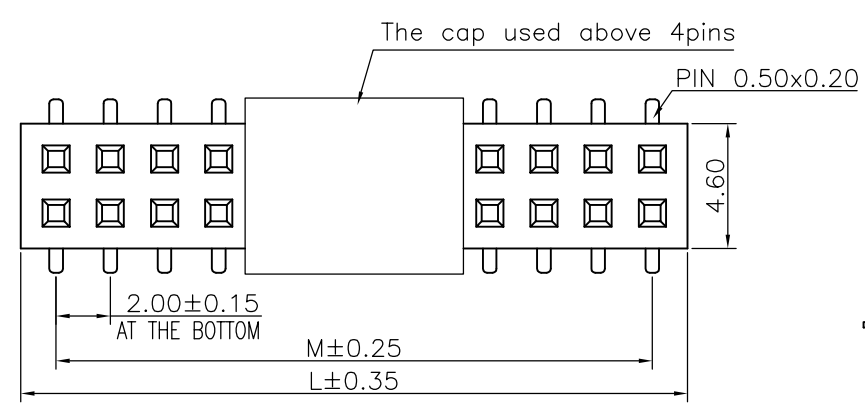


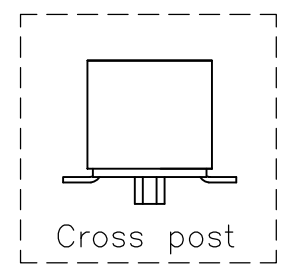
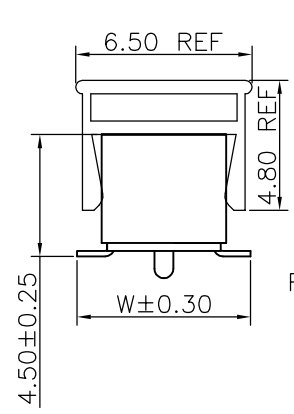
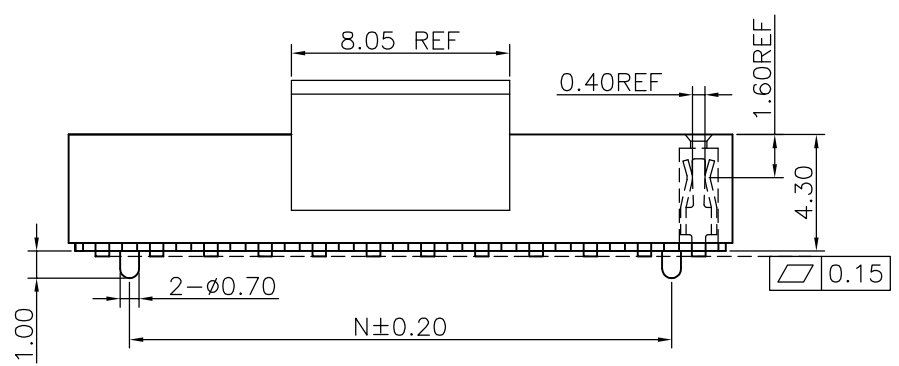
1 2 3 4 5 6 7 8 9

F
E
D
C
B
A

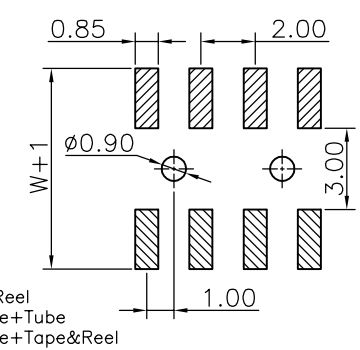
F
E
D
C
B
A



Specifications
 Current Rating:2.0Amp
 Insulation Resistance:1000MΩMin.
 Dielectric Withstanding Voltage:500VAC
 Contact Resistance:20mΩMax.
 Operating Temperature:-40°C to +105°C
 Materials
 Contact Material:Phosphor Bronze
 Insulator Material:
 Nylon(High temperature resistance),
 LCP(High temperature resistance),
 UL 94V-0
 All materials must meet Greenconn
 hazardous substances control standards.



Recommended P.C.Board
 Layout
 (Tolerance:±0.05)



No. of PIN/ROW	Dimension Information		
	M	L	N
02	2.00	4.60	--
03	4.00	6.60	2.00
04	6.00	8.60	4.00
05	8.00	10.60	6.00
06	10.00	12.60	8.00
07	12.00	14.60	10.00
08	14.00	16.60	12.00
09	16.00	18.60	14.00
10	18.00	20.60	16.00
11	20.00	22.60	18.00
12	22.00	24.60	20.00
13	24.00	26.60	22.00
14	26.00	28.60	24.00
15	28.00	30.60	26.00
16	30.00	32.60	28.00
17	32.00	34.60	30.00
18	34.00	36.60	32.00
19	36.00	38.60	34.00
20	38.00	40.60	36.00
21	40.00	42.60	38.00
22	42.00	44.60	40.00
23	44.00	46.60	42.00
24	46.00	48.60	44.00
25	48.00	50.60	46.00
26	50.00	52.60	48.00
27	52.00	54.60	50.00
28	54.00	56.60	52.00
29	56.00	58.60	54.00
30	58.00	60.60	56.00
31	60.00	62.60	58.00
32	62.00	64.60	60.00
33	64.00	66.60	62.00
34	66.00	68.60	64.00
35	68.00	70.60	66.00
36	70.00	72.60	68.00
37	72.00	74.60	70.00
38	74.00	76.60	72.00
39	76.00	78.60	74.00
40	78.00	80.60	76.00

Ordering Information

XB-PM-C-20-201

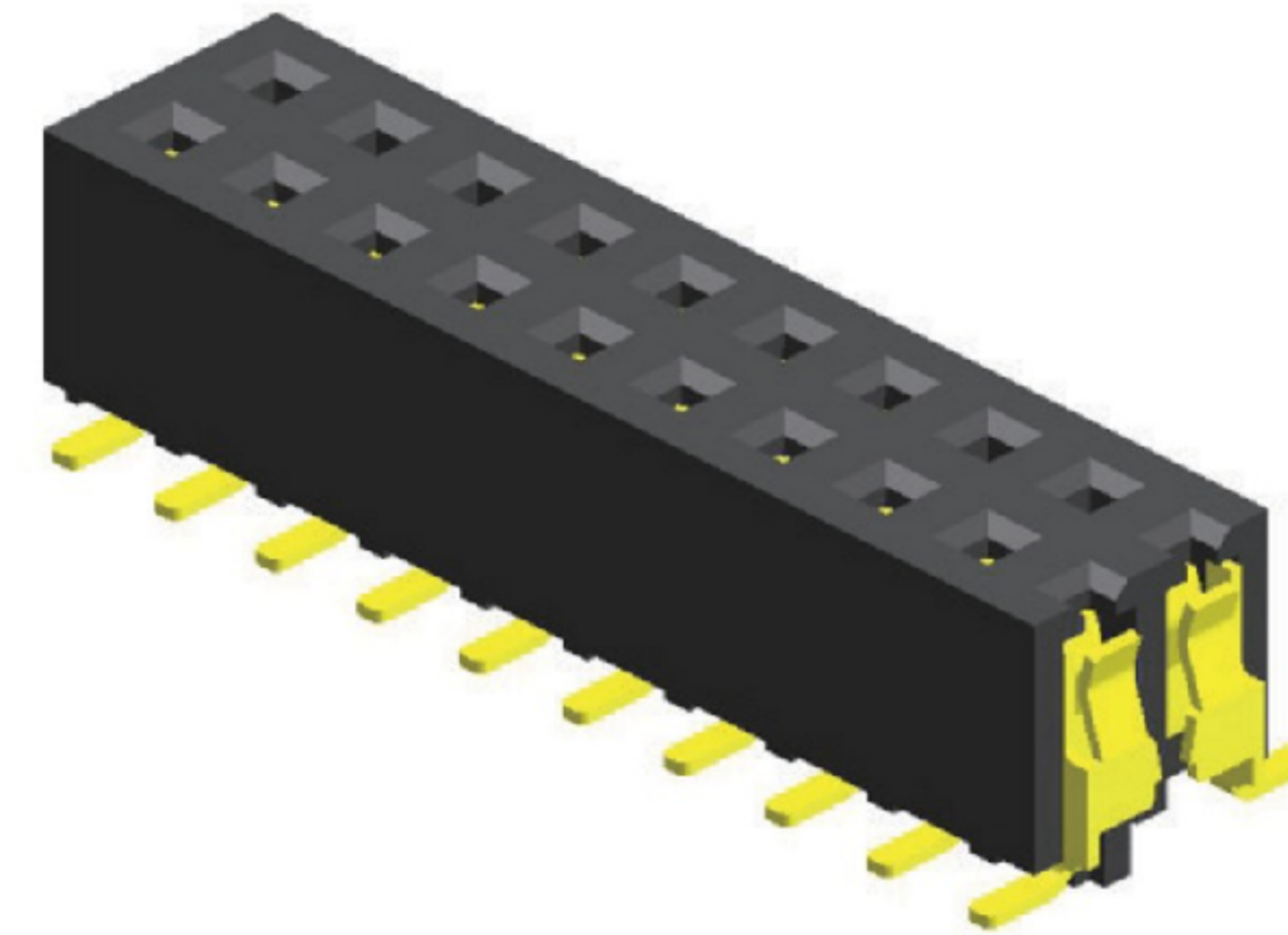
- Plastic specifications
 - 1=Single row
 - 2=Dual row
 - 3=Tripe row
 - 4=Quadruple
- Water code
- Positioning column information
 - A=No locating post
 - B=Round post
 - C=Cross post
- Pin length
See the drawing
- Color
 - 1=Black
 - 2=White
 - 3=Yellow
 - E=Beige
- Packing code
 - A=Box
 - B=Tray
 - C=Tube
 - D=Tape&Reel
 - E=Cap+Tube
 - F=Cap+Tape&Reel
 - G=Acetate Tape+Tube
 - H=Acetate Tape+Tape&Reel
- No. of Pins per Row
02~40
- Plating code
 - 01=Tin
 - 02=Gold Flash
 - 05=Gold Flash/Tin
 - 22=Matte Tin
- Contact Material
A/S/K/T=Phosphor Bronze
- Insulator Material
 - R=Nylon(Halogen Free)
 - C=LCP

东莞市溪榜电子有限公司 DONG GUAN XI BANG ELECTRONICS CO., LTD.	GENERAL TOLERANCE		DESIGNED:	DATE:	DWG. NO. XB-PM-C-20-201	TITLE. 2.00 FEMALE HEADER DUAL ROWS SMT TYPE CONNECTOR
	X.*±5.0*	X.±0.30	CHECKED:	DATE:		
	.X*±3.0*	.X±0.25	CO SIGNED:	DATE:	PART NO. XB-PM-C-20-201	
	.XX*±2.0*	.XX±0.15	APPROVED:	DATE:		
REV. 01	UNIT. mm	SCALE. 4:1	PAGE. 1/1			

1 2 3 4 5 6 7 8 9

Specifications

Current Rating : 2.0 Ampere
 Insulation Resistance : 1000 MΩ Min
 Dielectric Withstanding : 500V AC
 Contact Resistance : 20 mΩ Max
 Operating Temperature : -40°C to +105°C

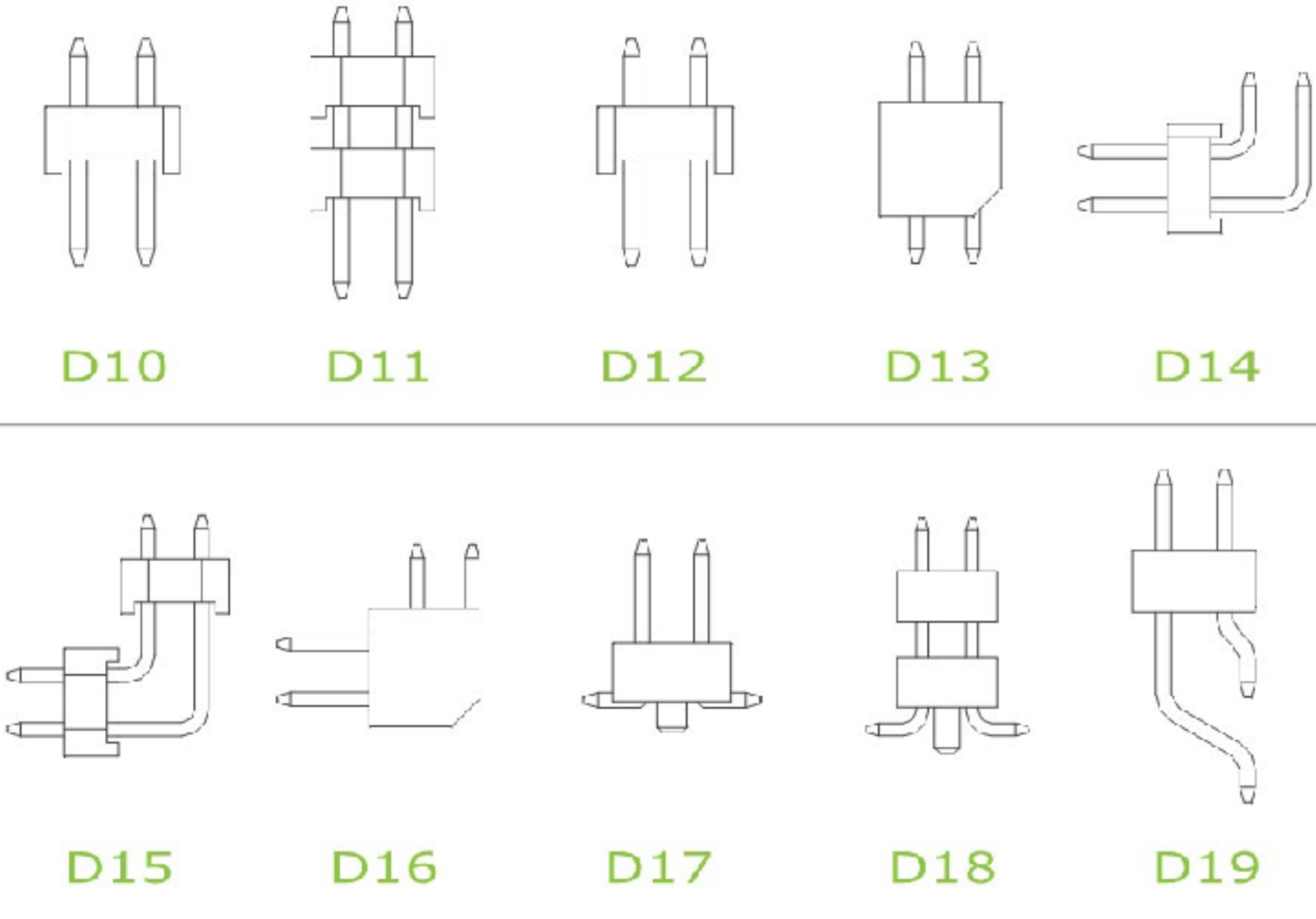


Materials

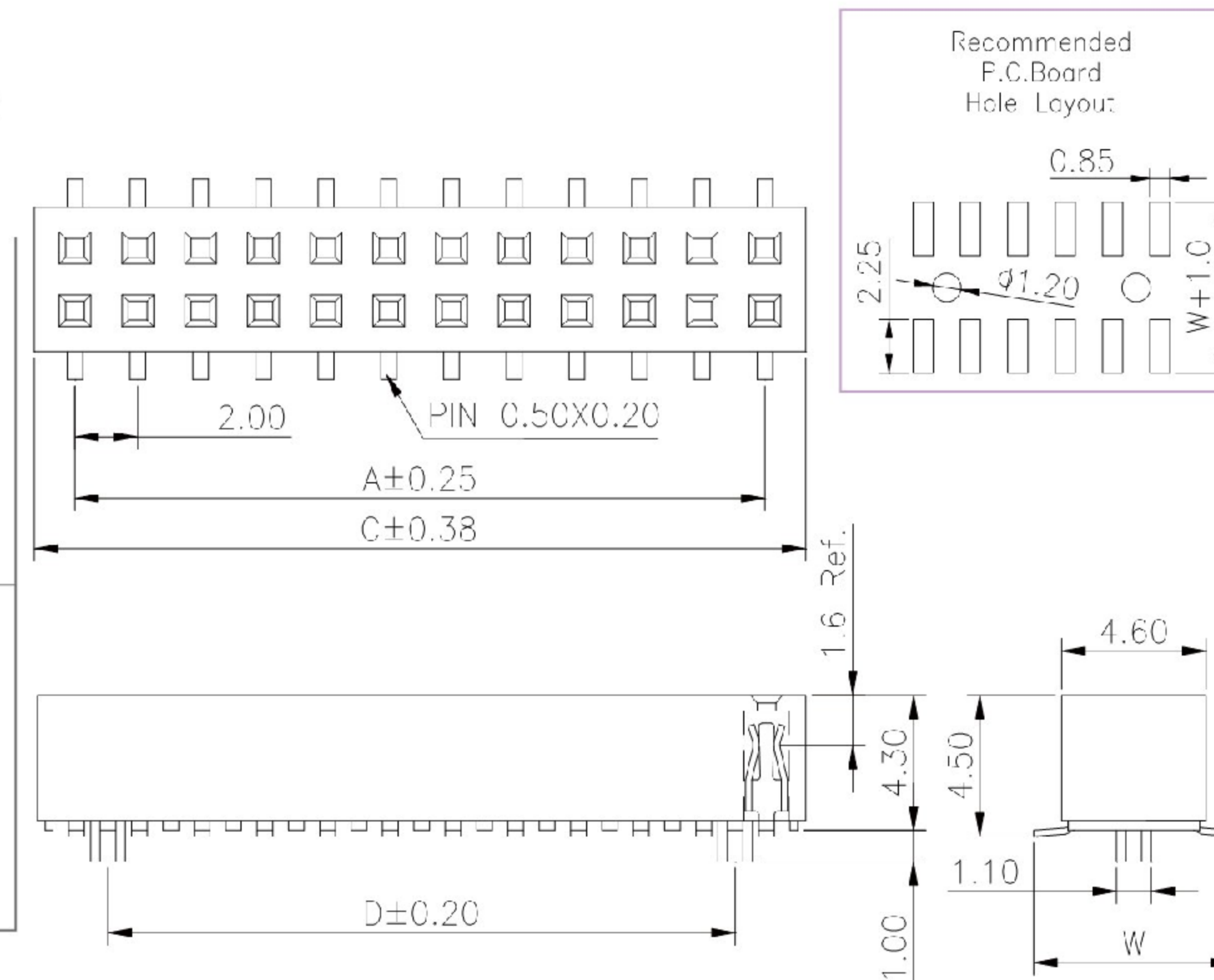
Contact Material : Phosphor Bronze
 Insulation Material : High Temperature Thermoplastic, 94V-0 Nylon

All materials must meet Greenconn's requirements for environmental protection.

Mating with



P.S. : Suggested mating pin length : 3.0 ~ 4.0 mm



* For Coded Dimension Not Inside The Table, Please Refer To "Ordering Information"

No. of Pins/Row	Dimension Information			No. of Pins/Row	Dimension Information			No. of Pins/Row	Dimension Information			No. of Pins/Row	Dimension Information		
	A	C	D		A	C	D		A	C	D		A	C	D
03	4.00	6.60	2.00	11	20.00	22.60	18.00	21	40.00	42.60	38.00	31	60.00	62.60	58.00
04	6.00	8.60	4.00	12	22.00	24.60	20.00	22	42.00	44.60	40.00	32	62.00	64.60	60.00
05	8.00	10.60	6.00	13	24.00	26.60	22.00	23	44.00	46.60	42.00	33	64.00	66.60	62.00
06	10.00	12.60	8.00	14	26.00	28.60	24.00	24	46.00	48.60	44.00	34	66.00	68.60	64.00
07	12.00	14.60	10.00	15	28.00	30.60	26.00	25	48.00	50.60	46.00	35	68.00	70.60	66.00
08	14.00	16.60	12.00	16	30.00	32.60	28.00	26	50.00	52.60	48.00	36	70.00	72.60	68.00
09	16.00	18.60	14.00	17	32.00	34.60	30.00	27	52.00	54.60	50.00	37	72.00	74.60	70.00
10	18.00	20.60	16.00	18	34.00	36.60	32.00	28	54.00	56.60	52.00	38	74.00	76.60	72.00
				19	36.00	38.60	34.00	29	56.00	58.60	54.00	39	76.00	78.60	74.00
				20	38.00	40.60	36.00	30	58.00	60.60	56.00	40	78.00	80.60	76.00

XB 东莞市溪榜电子有限公司
 DONG GUAN XI BANG ELECTRONICS CO., LTD.

REV. 01 UNIT. mm SCALE. 5:1 PAGE. 1/1

GENERAL TOLERANCE	
X' ± 5.0'	X ± 0.30
.X' ± 3.0'	.X ± 0.25
.XX' ± 2.0'	.XX ± 0.15
.XXX' ± 1.0'	.XXX ± 0.10

DESIGN:	DATE:
CHECKED:	DATE:
AUDITED:	DATE:
APPROVED:	DATE:

DWG. NO. XB-PM-C-20-201
 PART NO. XB-PM-C-20-201

TITLE. 2.00 FEMALE HEADER SINGLE ROW DIP TYPE BASE 4.30H