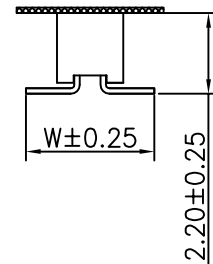
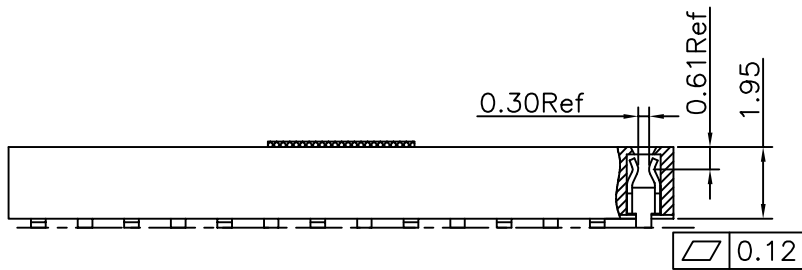
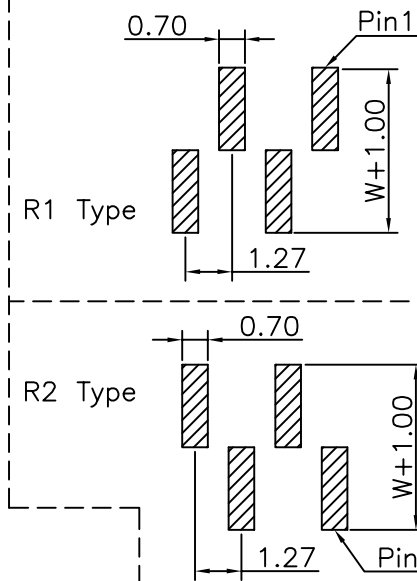


Specifications
 Current Rating:1Amp
 Insulation Resistance:1000MΩMin.
 Dielectric Withstanding Voltage:300VAC
 Contact Resistance:20mΩMax.
 Operating Temperature:-40°C to +105°C
 Materials
 Contact Material:Phosphor Bronze
 Insulator Material:High Temperature Thermoplastic, UL 94V-0 LCP or the equivalent material
 All materials must meet Greenconn requirement for environment protection.



Recommended P.C.Board Layout
 (Tolerance:±0.05)



| No. of PIN/ROW | Dimension Information | |
|----------------|-----------------------|-------|
| | M | L |
| 02 | 1.27 | 2.89 |
| 03 | 2.54 | 4.16 |
| 04 | 3.81 | 5.43 |
| 05 | 5.08 | 6.70 |
| 06 | 6.35 | 7.97 |
| 07 | 7.62 | 9.24 |
| 08 | 8.89 | 10.51 |
| 09 | 10.16 | 11.78 |
| 10 | 11.43 | 13.05 |
| 11 | 12.70 | 14.32 |
| 12 | 13.97 | 15.59 |
| 13 | 15.24 | 16.86 |
| 14 | 16.51 | 18.13 |
| 15 | 17.78 | 19.40 |
| 16 | 19.05 | 20.67 |
| 17 | 20.32 | 21.94 |
| 18 | 21.59 | 23.21 |
| 19 | 22.86 | 24.48 |
| 20 | 24.13 | 25.75 |
| 21 | 25.40 | 27.02 |
| 22 | 26.67 | 28.29 |
| 23 | 27.94 | 29.56 |
| 24 | 29.21 | 30.83 |
| 25 | 30.48 | 32.10 |
| 26 | 31.75 | 33.37 |
| 27 | 33.02 | 34.64 |
| 28 | 34.29 | 35.91 |
| 29 | 35.56 | 37.18 |
| 30 | 36.83 | 38.45 |
| 31 | 38.10 | 39.72 |
| 32 | 39.37 | 40.99 |
| 33 | 40.64 | 42.26 |
| 34 | 41.91 | 43.53 |
| 35 | 43.18 | 44.80 |
| 36 | 44.45 | 46.07 |
| 37 | 45.72 | 47.34 |
| 38 | 46.99 | 48.61 |
| 39 | 48.26 | 49.88 |
| 40 | 49.53 | 51.15 |

Ordering Information XB-PM-C-127-101

Plastic specifications
 1=Single row
 2=Dual row
 3=Tripe row
 4=Quadruple

Water code
 No. of Pins per Row
 02~40

Positioning column information
 A=No locating post
 B=Round post
 C=Square post

Plating code
 01=Tin
 02=Gold Flash
 05=Gold Flash/Tin
 22=Matte Tin

Pin length
 See the drawing

Insulator Material
 C=LCP

Color
 1=Black
 2=White
 3=Yellow
 E=Beige

Contact Material
 A=Phosphor Bronze

Packing code
 C=Tube
 D=Tape&Reel
 G=Acetate Tape+Tube
 H=Acetate Tape+Tape&Reel

东莞市溪榜电子有限公司
 DONG GUAN XI BANG ELECTRONICS CO., LTD.

REV. 01 UNIT. mm SCALE. 5:1 PAGE. 1/1

| GENERAL TOLERANCE | |
|-------------------|-----------|
| X.*±5.0° | X.±0.30 |
| .X*±3.0° | .X±0.25 |
| .XX*±2.0° | .XX±0.15 |
| .XXX*±1.0° | .XXX±0.10 |

DESIGN: _____ DATE: _____
 CHECKED: _____ DATE: _____
 AUDITED: _____ DATE: _____
 APPROVED: _____ DATE: _____

DWG. NO.
XB-PM-C-127-101
 PART NO.
XB-PM-C-127-101

TITLE:
 1.27 FEMALE HEADER
 SINGLE ROWS SMT TYPE
 CONNECTOR