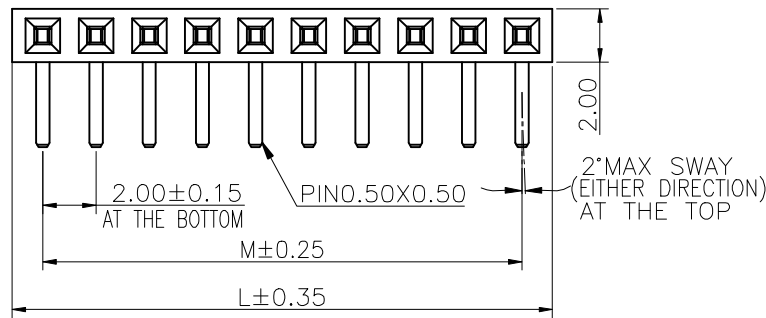


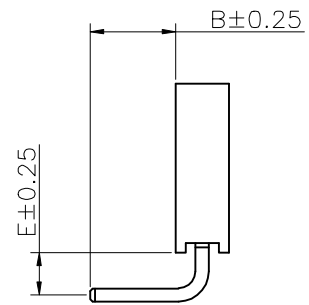
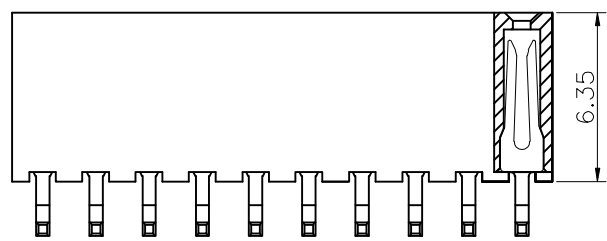
F



Specifications  
 Current Rating:2.0Amp  
 Insulation Resistance:1000MΩMin.  
 Dielectric Withstanding Voltage:500VAC  
 Contact Resistance:20mΩMax.  
 Operating Temperature:-40°C to +105°C  
 Materials  
 Contact Material:Phosphor Bronze  
 Insulator Material:  
 PBT(Not resistant to high temperature),  
 Nylon(High temperature resistance),  
 LCP(High temperature resistance),  
 UL 94V-0  
 All materials must meet Greenconn  
 hazardous substances control standards.

E

D



No. of PIN/ROW	Dimension Information	
	M	L
02	2.00	4.30
03	4.00	6.30
04	6.00	8.30
05	8.00	10.30
06	10.00	12.30
07	12.00	14.30
08	14.00	16.30
09	16.00	18.30
10	18.00	20.30
11	20.00	22.30
12	22.00	24.30
13	24.00	26.30
14	26.00	28.30
15	28.00	30.30
16	30.00	32.30
17	32.00	34.30
18	34.00	36.30
19	36.00	38.30
20	38.00	40.30
21	40.00	42.30
22	42.00	44.30
23	44.00	46.30
24	46.00	48.30
25	48.00	50.30
26	50.00	52.30
27	52.00	54.30
28	54.00	56.30
29	56.00	58.30
30	58.00	60.30
31	60.00	62.30
32	62.00	64.30
33	64.00	66.30
34	66.00	68.30
35	68.00	70.30
36	70.00	72.30
37	72.00	74.30
38	74.00	76.30
39	76.00	78.30
40	78.00	80.30

C

### Ordering Information XB-PM-B-20-107

Plastic specifications  
 1=Single row  
 2=Dual row  
 3=Tripe row  
 4=Quadruple

Water code

No. of Pins per Row  
02~40

Positioning column information  
 A=No locating post  
 B=Round post  
 C=Square post

Pin length  
See the drawing

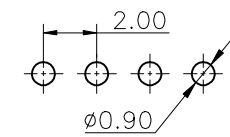
Insulator Material  
 A=PBT  
 R=Nylon(Halogen Free)  
 C=LCP

Color  
 1=Black  
 2=White  
 3=Yellow  
 E=Beige

Contact Material  
 A/S/K/T=Phosphor Bronze

Packing code  
 A=Box  
 B=Tray  
 C=Tube  
 D=Tape&Reel

Recommended P.C.Board  
 Layout  
 (Tolerance:±0.05)



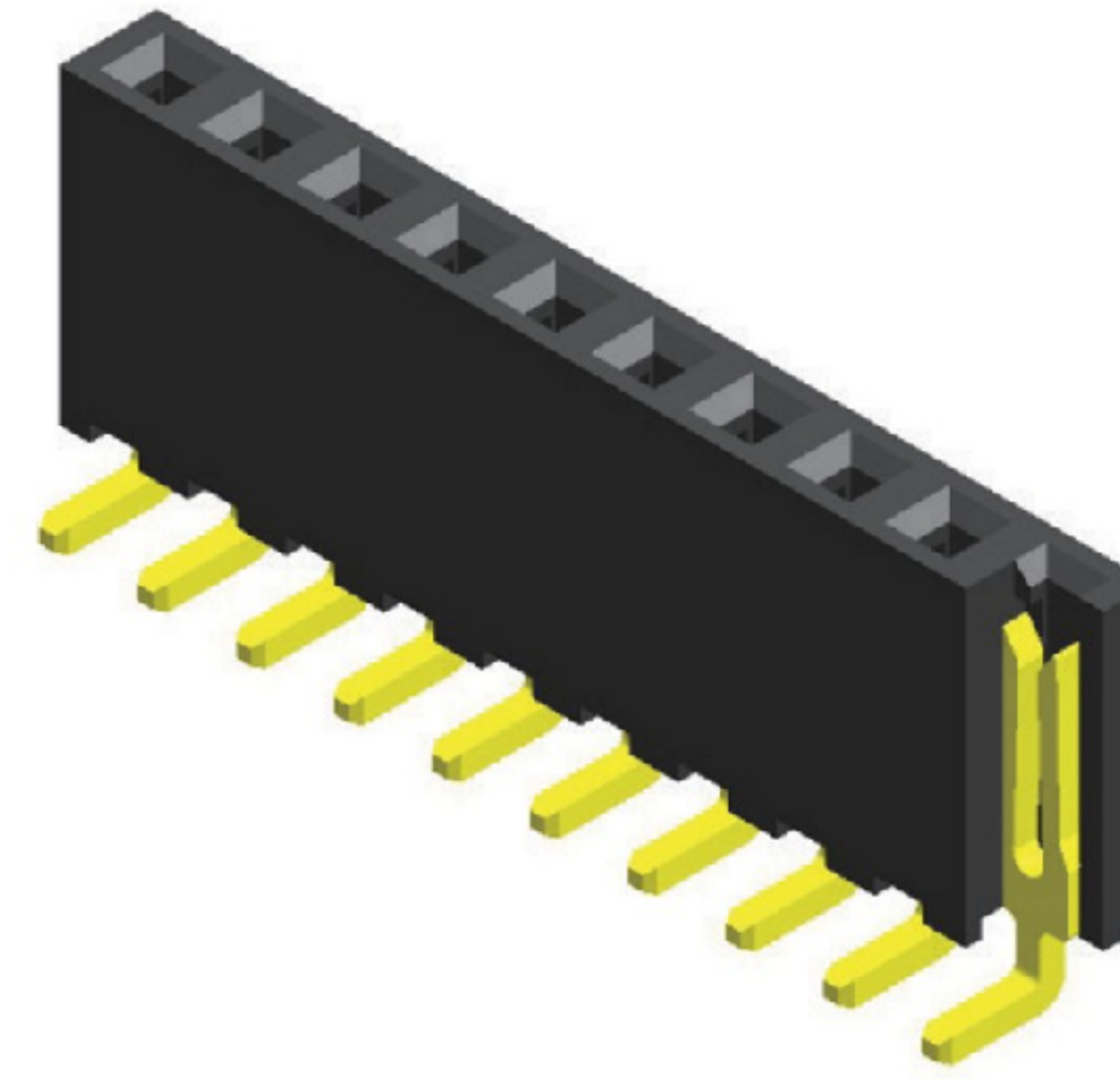
B

A

<p>东莞市溪榜电子有限公司 DONG GUAN XI BANG ELECTRONICS CO., LTD.</p>	GENERAL TOLERANCE		DESIGNED:	DATE:	DWG. NO. <b>XB-PM-B-20-107</b>	TITLE. 2.00 FEMALE HEADER SINGLE ROW R/A TYPE SIDE ENTRY
	.X'±5.0'	X.±0.30	CHECKED:	DATE:		
	.X'±3.0'	.X±0.25	CO SIGNED:	DATE:		
	.XX'±2.0'	.XX±0.15	APPROVED:	DATE:		
REV. 01	UNIT. mm	SCALE. 4:1	PAGE. 1/1		PART NO. <b>XB-PM-B-20-107</b>	

### Specifications

Current Rating : 2.0 Ampere  
 Insulation Resistance : 1000 MΩ Min  
 Dielectric Withstanding : 500V AC  
 Contact Resistance : 20 mΩ Max  
 Operating Temperature : -40°C to +105°C

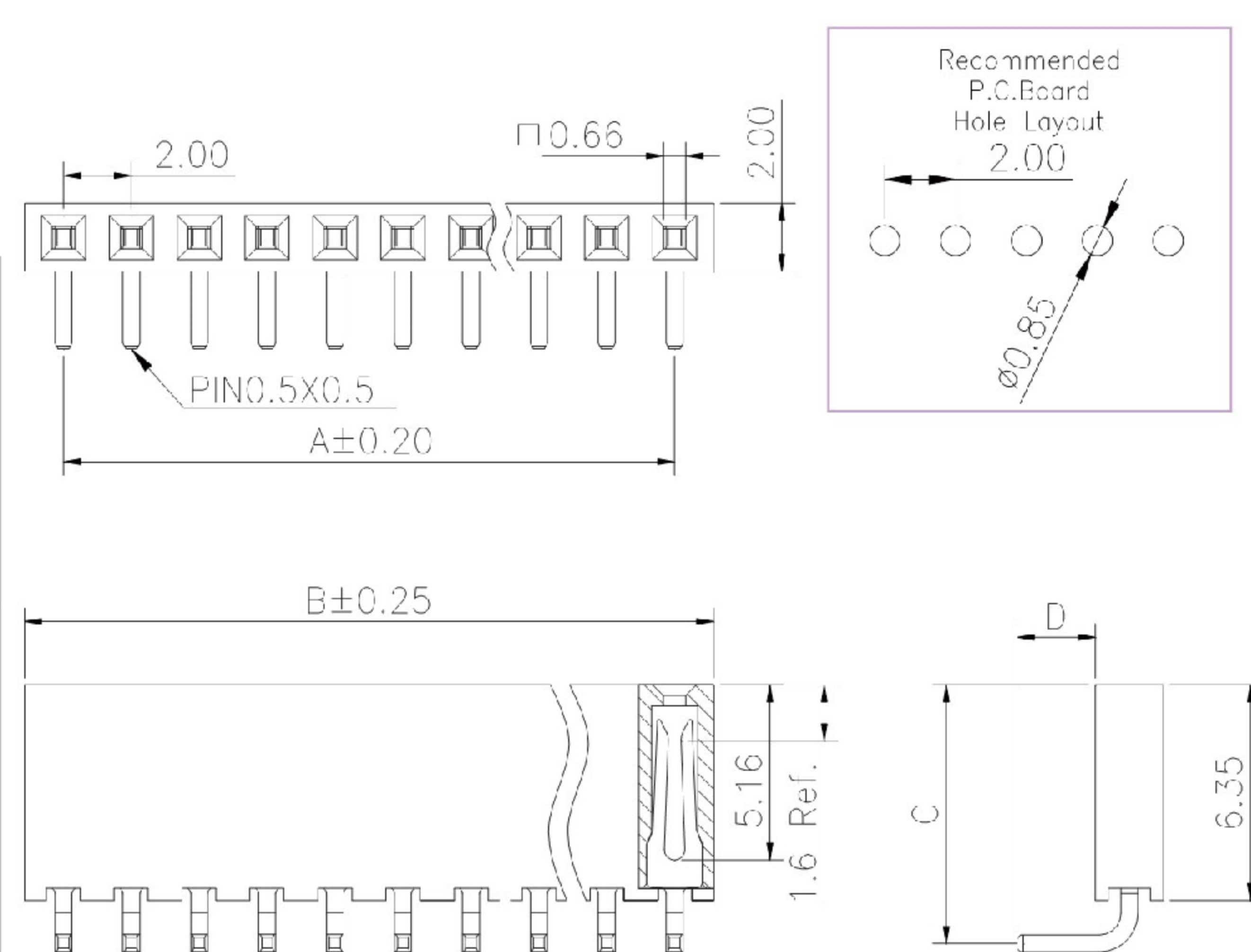
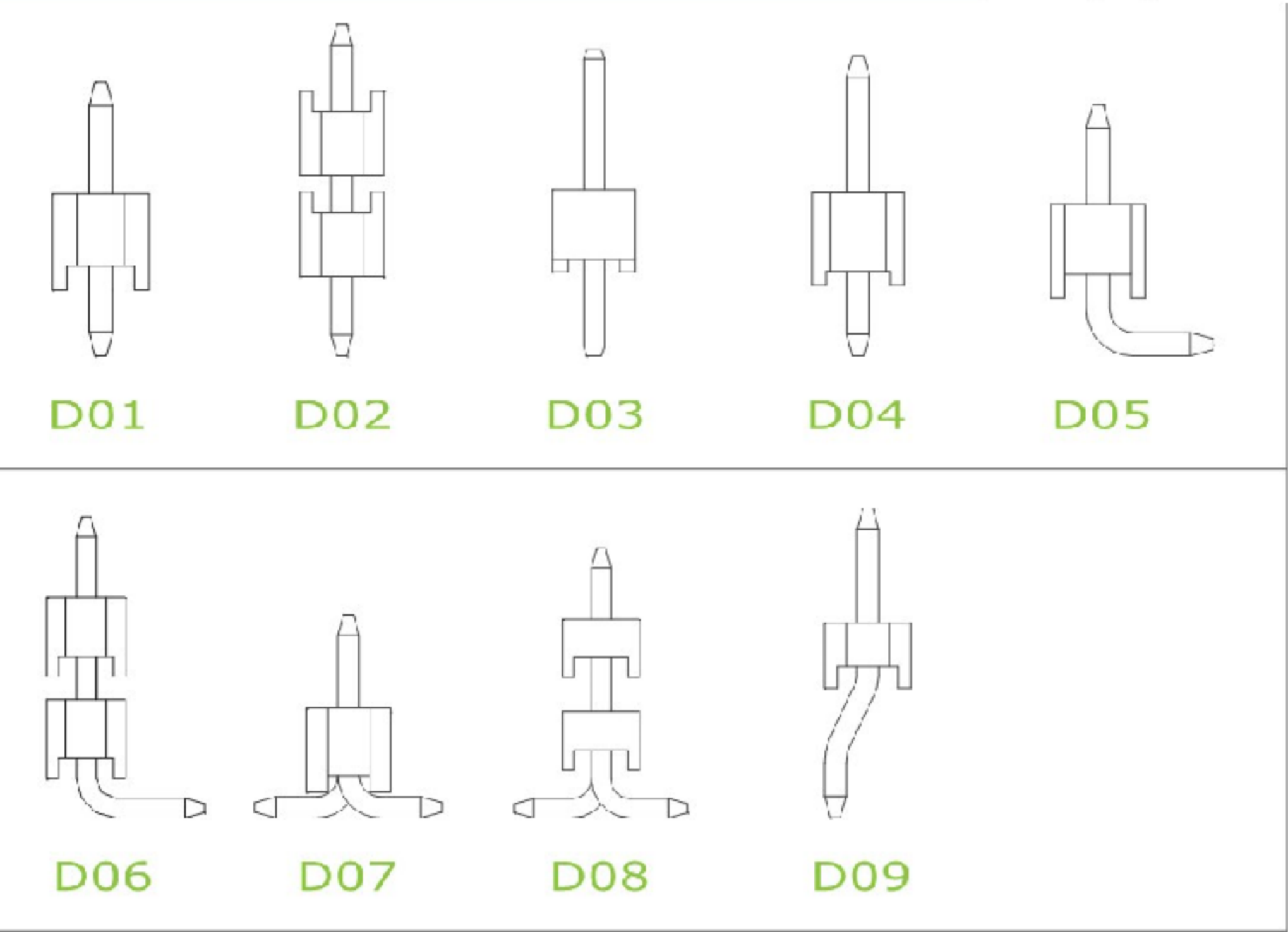


### Materials

Contact Material : Phosphor Bronze  
 Insulation Material : High Temperature Thermoplastic, 94V-0 LCP

All materials must meet Greenconn's requirements for environmental protection.

### Mating with



P.S. : Suggested mating pin length : 3.0 ~ 4.9 mm

\* For Coded Dimension Not Inside The Table, Please Refer To "Ordering Information"

No. of Pins/Row	Dimension Information		No. of Pins/Row	Dimension Information		No. of Pins/Row	Dimension Information		No. of Pins/Row	Dimension Information	
	A	B		A	B		A	B		A	B
02	2.00	4.30	11	20.00	22.30	21	40.00	42.30	31	60.00	62.30
03	4.00	6.30	12	22.00	24.30	22	42.00	44.30	32	62.00	64.30
04	6.00	8.30	13	24.00	26.30	23	44.00	46.30	33	64.00	66.30
05	8.00	10.30	14	26.00	28.30	24	46.00	48.30	34	66.00	68.30
06	10.00	12.30	15	28.00	30.30	25	48.00	50.30	35	68.00	70.30
07	12.00	14.30	16	30.00	32.30	26	50.00	52.30	36	70.00	72.30
08	14.00	16.30	17	32.00	34.30	27	52.00	54.30	37	72.00	74.30
09	16.00	18.30	18	34.00	36.30	28	54.00	56.30	38	74.00	76.30
10	18.00	20.30	19	36.00	38.30	29	56.00	58.30	39	76.00	78.30
			20	38.00	40.30	30	58.00	60.30	40	78.00	80.30

**XB** 东莞市溪榜电子有限公司  
 DONG GUAN XI BANG ELECTRONICS CO., LTD.

REV. 01 UNIT. mm SCALE. 5:1 PAGE. 1/1

GENERAL TOLERANCE	
X'±5.0'	X.±0.30
.X'±3.0'	.X±0.25
.XX'±2.0'	.XX±0.15
.XXX'±1.0'	.XXX±0.10

DESIGN: \_\_\_\_\_ DATE: \_\_\_\_\_  
 CHECKED: \_\_\_\_\_ DATE: \_\_\_\_\_  
 AUDITED: \_\_\_\_\_ DATE: \_\_\_\_\_  
 APPROVED: \_\_\_\_\_ DATE: \_\_\_\_\_

DWG. NO. XB-PM-B-20-107  
 PART NO. XB-PM-B-20-107

TITLE. 2.00 FEMALE HEADER  
 SINGLE ROW DIP TYPE  
 BASE 4.30H