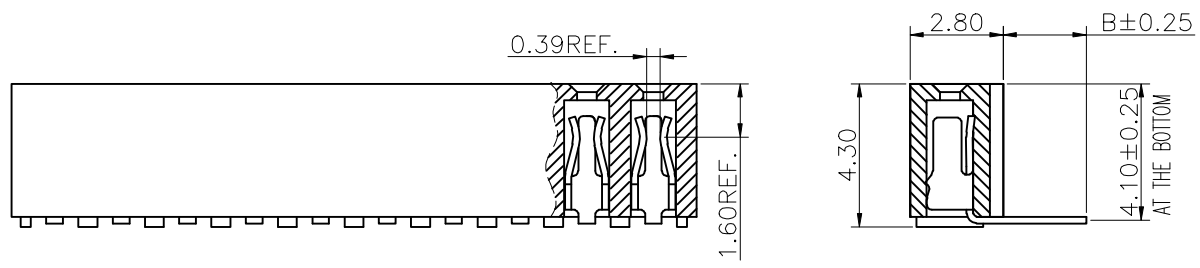
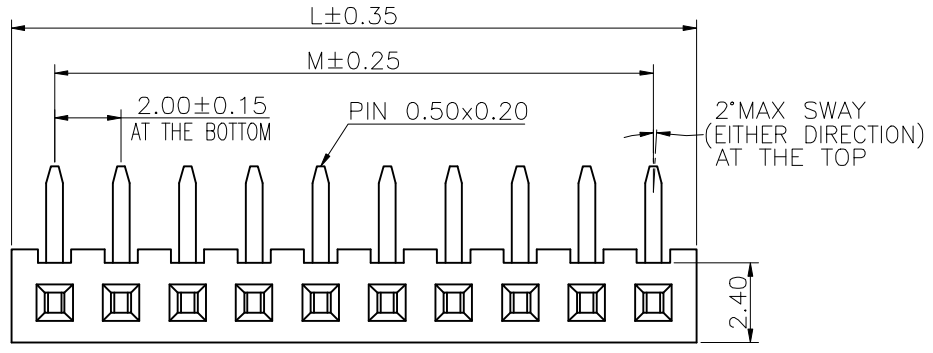


Specifications  
 Current Rating:2.0Amp  
 Insulation Resistance:1000MΩMin.  
 Dielectric Withstanding Voltage:500VAC  
 Contact Resistance:20mΩMax.  
 Operating Temperature:-40°C to +105°C  
 Materials  
 Contact Material:Phosphor Bronze  
 Insulator Material:  
 PBT(Not resistant to high temperature),  
 Nylon(High temperature resistance),  
 LCP(High temperature resistance),  
 UL 94V-0  
 All materials must meet Greennon  
 hazardous substances control standards.



| No. of PIN/ROW | Dimension Information |       |
|----------------|-----------------------|-------|
|                | M                     | L     |
| 02             | 2.00                  | 4.60  |
| 03             | 4.00                  | 6.60  |
| 04             | 6.00                  | 8.60  |
| 05             | 8.00                  | 10.60 |
| 06             | 10.00                 | 12.60 |
| 07             | 12.00                 | 14.60 |
| 08             | 14.00                 | 16.60 |
| 09             | 16.00                 | 18.60 |
| 10             | 18.00                 | 20.60 |
| 11             | 20.00                 | 22.60 |
| 12             | 22.00                 | 24.60 |
| 13             | 24.00                 | 26.60 |
| 14             | 26.00                 | 28.60 |
| 15             | 28.00                 | 30.60 |
| 16             | 30.00                 | 32.60 |
| 17             | 32.00                 | 34.60 |
| 18             | 34.00                 | 36.60 |
| 19             | 36.00                 | 38.60 |
| 20             | 38.00                 | 40.60 |
| 21             | 40.00                 | 42.60 |
| 22             | 42.00                 | 44.60 |
| 23             | 44.00                 | 46.60 |
| 24             | 46.00                 | 48.60 |
| 25             | 48.00                 | 50.60 |
| 26             | 50.00                 | 52.60 |
| 27             | 52.00                 | 54.60 |
| 28             | 54.00                 | 56.60 |
| 29             | 56.00                 | 58.60 |
| 30             | 58.00                 | 60.60 |
| 31             | 60.00                 | 62.60 |
| 32             | 62.00                 | 64.60 |
| 33             | 64.00                 | 66.60 |
| 34             | 66.00                 | 68.60 |
| 35             | 68.00                 | 70.60 |
| 36             | 70.00                 | 72.60 |
| 37             | 72.00                 | 74.60 |
| 38             | 74.00                 | 76.60 |
| 39             | 76.00                 | 78.60 |
| 40             | 78.00                 | 80.60 |

### Ordering Information

**XB-PM-B-20-102**

Plastic specifications  
 1=Single row  
 2=Dual row  
 3=Tripe row  
 4=Quadruple

Water code

Positioning column information  
 A=No locating post  
 B=Round post  
 C=Square post

Pin length  
 See the drawing

Color  
 1=Black  
 2=White  
 3=Yellow  
 E=Beige

Packing code  
 B=Tray  
 C=Tube  
 D=Tape&Reel

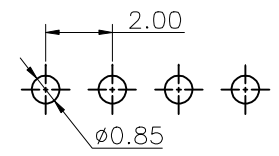
No. of Pins per Row  
 02~40

Plating code  
 01=Tin  
 02=Gold Flash  
 05=Gold Flash/Tin  
 22=Matte Tin

Insulator Material  
 A=PBT  
 R=Nylon(Halogen Free)  
 C=LCP

Contact Material  
 A/S/K/T=Phosphor Bronze

Recommended P.C.Board  
 Layout  
 (Tolerance:±0.05)



**东莞市溪榜电子有限公司**  
 DONG GUAN XI BANG ELECTRONI CS CO., LTD.

REV. 01 UNIT. mm SCALE. 5:1 PAGE. 1/1

| GENERAL TOLERANCE |           |
|-------------------|-----------|
| X.±5.0'           | X.±0.30   |
| .X'±3.0'          | .X±0.25   |
| .XX'±2.0'         | .XX±0.15  |
| .XXX'±1.0'        | .XXX±0.10 |

|            |       |
|------------|-------|
| DESIGNED:  | DATE: |
| CHECKED:   | DATE: |
| CO SIGNED: | DATE: |
| APPROVED:  | DATE: |

DWG. NO.  
**XB-PM-B-20-102**

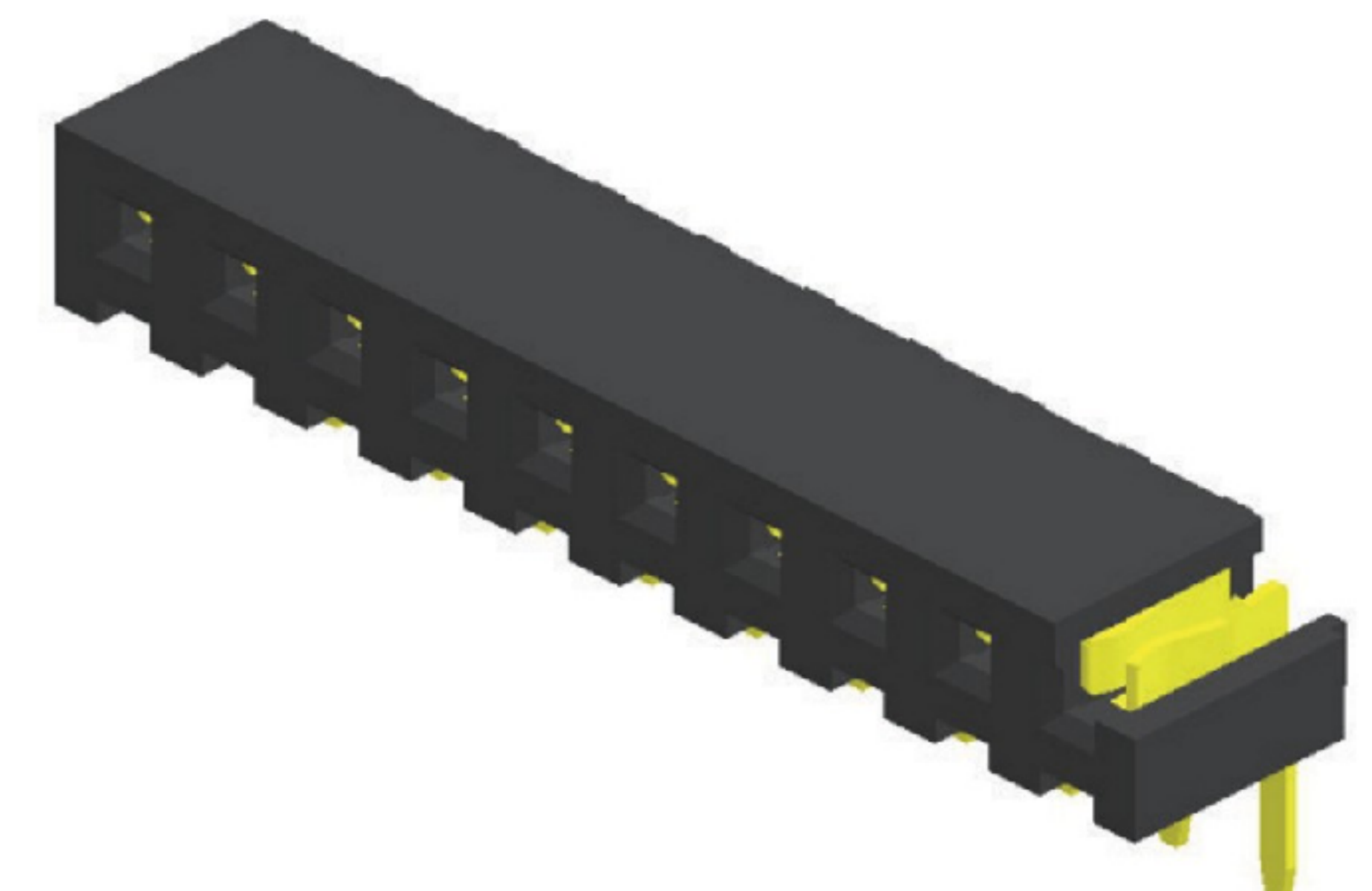
PART NO.  
**XB-PM-B-20-102**

TITLE.  
 2.00 FEMALE HEADER  
 SINGLE ROW  
 RIHGT ANGLE SERIES



### Specifications

Current Rating : 2.0 Ampere  
 Insulation Resistance : 1000 MΩ Min  
 Dielectric Withstanding : 500V AC  
 Contact Resistance : 20 mΩ Max  
 Operating Temperature : -40°C to +105°C

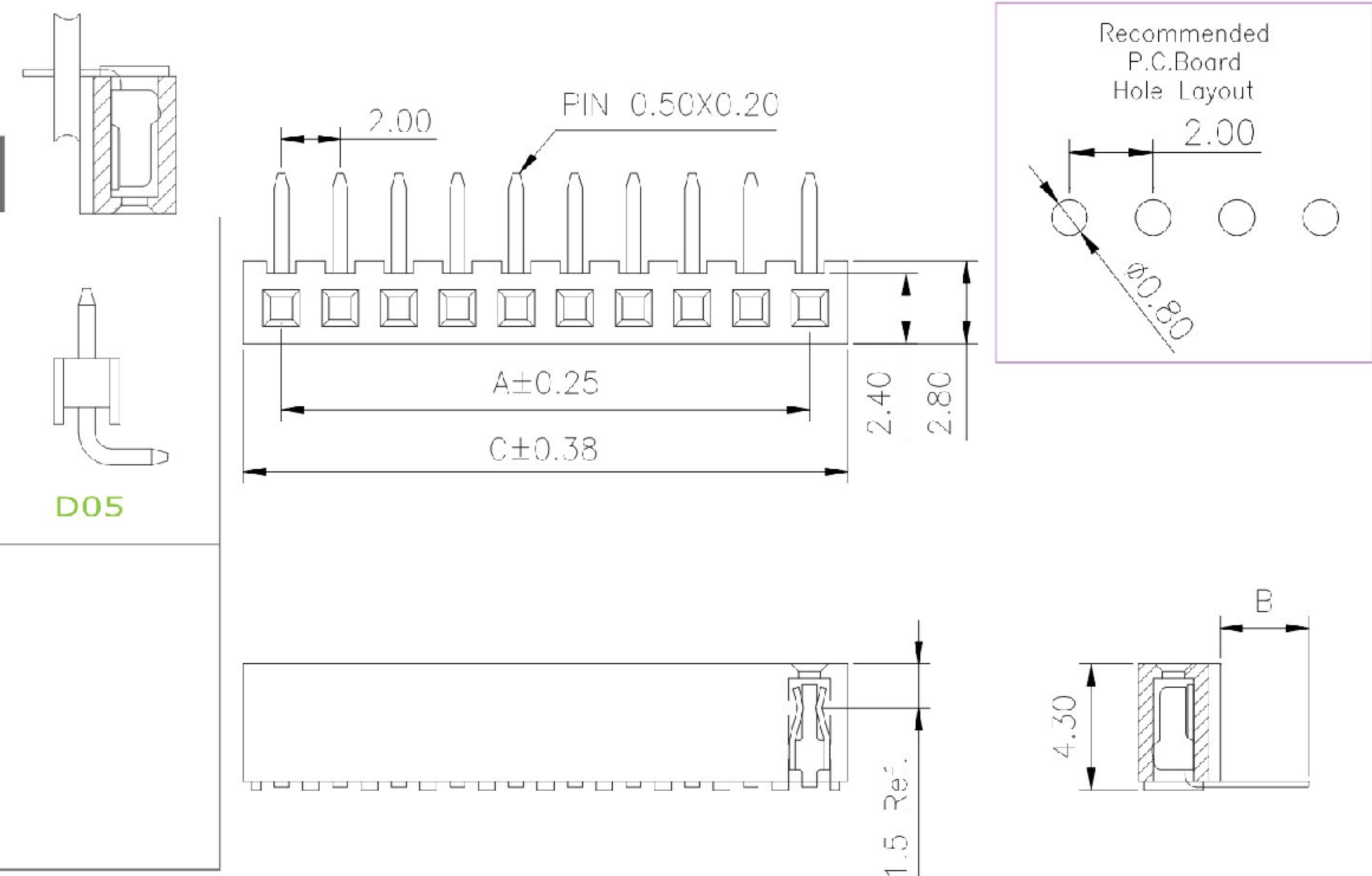
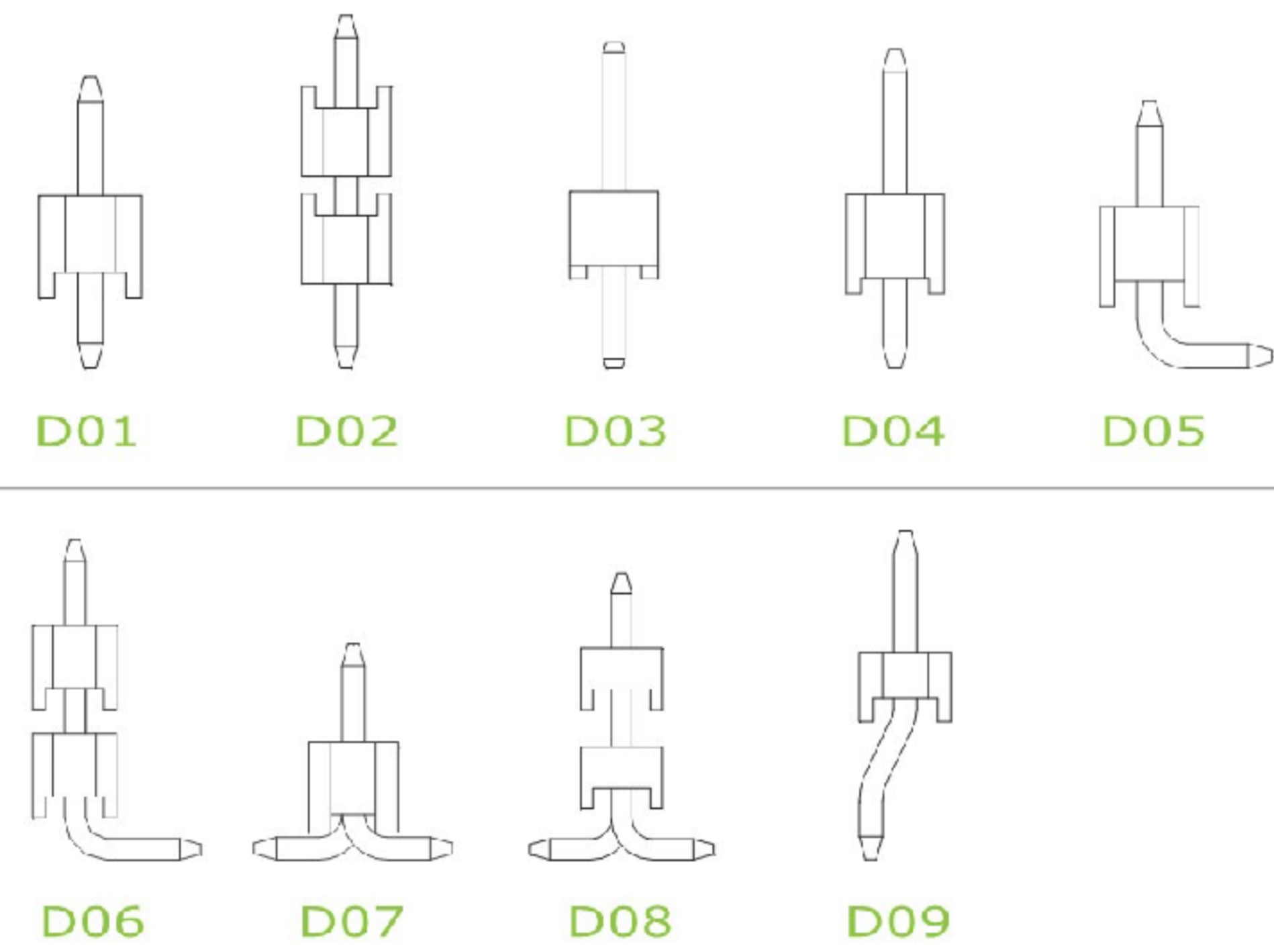


### Materials

Contact Material : Phosphor Bronze  
 Insulation Material : High Temperature Thermoplastic, 94V-0 Nylon

All materials must meet Greenconn's requirements for environmental protection.

### Mating with



P.S. : Suggested mating pin length : 3.0 ~ 4.0 mm

\* For Coded Dimension Not Inside The Table, Please Refer To "Ordering Information"

| No. of Pins/Row | Dimension Information |       | No. of Pins/Row | Dimension Information |       | No. of Pins/Row | Dimension Information |       | No. of Pins/Row | Dimension Information |       |
|-----------------|-----------------------|-------|-----------------|-----------------------|-------|-----------------|-----------------------|-------|-----------------|-----------------------|-------|
|                 | A                     | C     |                 | A                     | C     |                 | A                     | C     |                 | A                     | C     |
| 02              | 2.00                  | 4.60  | 11              | 20.00                 | 22.60 | 21              | 40.00                 | 42.60 | 31              | 60.00                 | 62.60 |
| 03              | 4.00                  | 6.60  | 12              | 22.00                 | 24.60 | 22              | 42.00                 | 44.60 | 32              | 62.00                 | 64.60 |
| 04              | 6.00                  | 8.60  | 13              | 24.00                 | 26.60 | 23              | 44.00                 | 46.60 | 33              | 64.00                 | 66.60 |
| 05              | 8.00                  | 10.60 | 14              | 26.00                 | 28.60 | 24              | 46.00                 | 48.60 | 34              | 66.00                 | 68.60 |
| 06              | 10.00                 | 12.60 | 15              | 28.00                 | 30.60 | 25              | 48.00                 | 50.60 | 35              | 68.00                 | 70.60 |
| 07              | 12.00                 | 14.60 | 16              | 30.00                 | 32.60 | 26              | 50.00                 | 52.60 | 36              | 70.00                 | 72.60 |
| 08              | 14.00                 | 16.60 | 17              | 32.00                 | 34.60 | 27              | 52.00                 | 54.60 | 37              | 72.00                 | 74.60 |
| 09              | 16.00                 | 18.60 | 18              | 34.00                 | 36.60 | 28              | 54.00                 | 56.60 | 38              | 74.00                 | 76.60 |
| 10              | 18.00                 | 20.60 | 19              | 36.00                 | 38.60 | 29              | 56.00                 | 58.60 | 39              | 76.00                 | 78.60 |
|                 |                       |       | 20              | 38.00                 | 40.60 | 30              | 58.00                 | 60.60 | 40              | 78.00                 | 80.60 |

**XB** 东莞市溪榜电子有限公司  
 DONG GUAN XI BANG ELECTRONICS CO., LTD.

REV. 01 UNIT. mm SCALE. 5:1 PAGE. 1/1

| GENERAL TOLERANCE |           |
|-------------------|-----------|
| X'±5.0'           | X.±0.30   |
| .X'±3.0'          | .X±0.25   |
| .XX'±2.0'         | .XX±0.15  |
| .XXX'±1.0'        | .XXX±0.10 |

DESIGN: \_\_\_\_\_ DATE: \_\_\_\_\_  
 CHECKED: \_\_\_\_\_ DATE: \_\_\_\_\_  
 AUDITED: \_\_\_\_\_ DATE: \_\_\_\_\_  
 APPROVED: \_\_\_\_\_ DATE: \_\_\_\_\_

DWG. NO. XB-PM-B-20-102  
 PART NO. XB-PM-B-20-102

TITLE. 2.00 FEMALE HEADER  
 SINGLE ROW DIP TYPE  
 BASE 4.30H