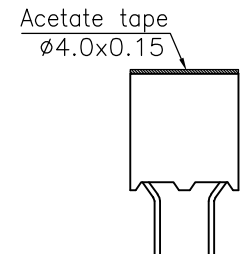
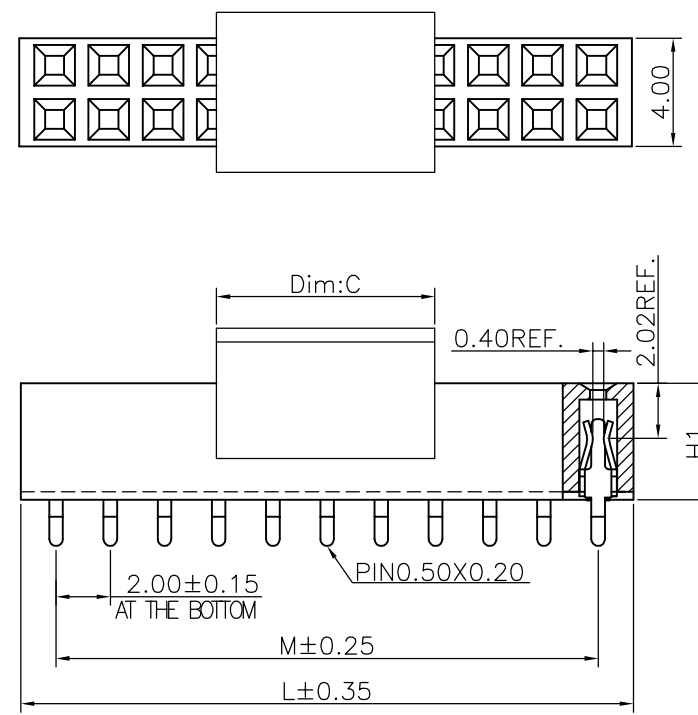
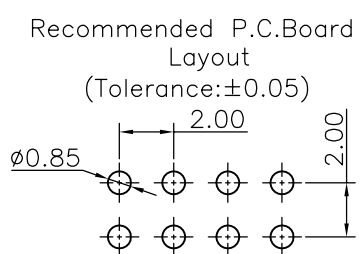
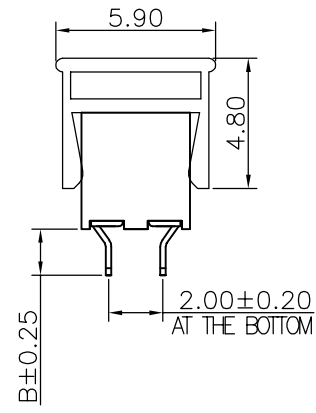


1 2 3 4 5 6 7 8 9

F
E
D
C
B
A



Specifications
 Current Rating: 2.0Amp
 Insulation Resistance: 1000MΩMin.
 Dielectric Withstanding Voltage: 500VAC
 Contact Resistance: 20mΩMax.
 Operating Temperature: -40°C to +105°C
 Materials
 Contact Material: Phosphor Bronze
 Insulator Material:
 PBT (Not resistant to high temperature),
 Nylon (High temperature resistance),
 LCP (High temperature resistance),
 UL 94V-0
 All materials must meet Greenconn hazardous substances control standards.



No. of PIN/ROW	Dimension Information	
	M	L
02	2.00	4.60
03	4.00	6.60
04	6.00	8.60
05	8.00	10.60
06	10.00	12.60
07	12.00	14.60
08	14.00	16.60
09	16.00	18.60
10	18.00	20.60
11	20.00	22.60
12	22.00	24.60
13	24.00	26.60
14	26.00	28.60
15	28.00	30.60
16	30.00	32.60
17	32.00	34.60
18	34.00	36.60
19	36.00	38.60
20	38.00	40.60
21	40.00	42.60
22	42.00	44.60
23	44.00	46.60
24	46.00	48.60
25	48.00	50.60
26	50.00	52.60
27	52.00	54.60
28	54.00	56.60
29	56.00	58.60
30	58.00	60.60
31	60.00	62.60
32	62.00	64.60
33	64.00	66.60
34	66.00	68.60
35	68.00	70.60
36	70.00	72.60
37	72.00	74.60
38	74.00	76.60
39	76.00	78.60
40	78.00	80.60

Ordering Information

XB-PM-A-20-208

- Plastic specifications
 - 1=Single row
 - 2=Dual row
 - 3=Tripe row
 - 4=Quadruple
- Water code
 - 08:H1=4.30
 - 10:H1=4.00
- No. of Pins per Row
 - 02~40
- Positioning column information
 - A=No locating post
 - B=Round post
 - C=Square post
- Pin length
 - See the drawing
- Insulator Material
 - A=PBT
 - R=Nylon(Halogen Free)
 - C=LCP
- Color
 - 1=Black
 - 2=White
 - 3=Yellow
 - E=Beige
- Contact Material
 - A/S/K/T=Phosphor Bronze
- Packing code
 - A=Box
 - B=Tray
 - C=Tube
 - D=Tape&Reel
 - E=Cap+Tube
 - F=Cap+Tape&Reel
 - G=Acetate Tape+Tube
 - H=Acetate Tape+Tape&Reel

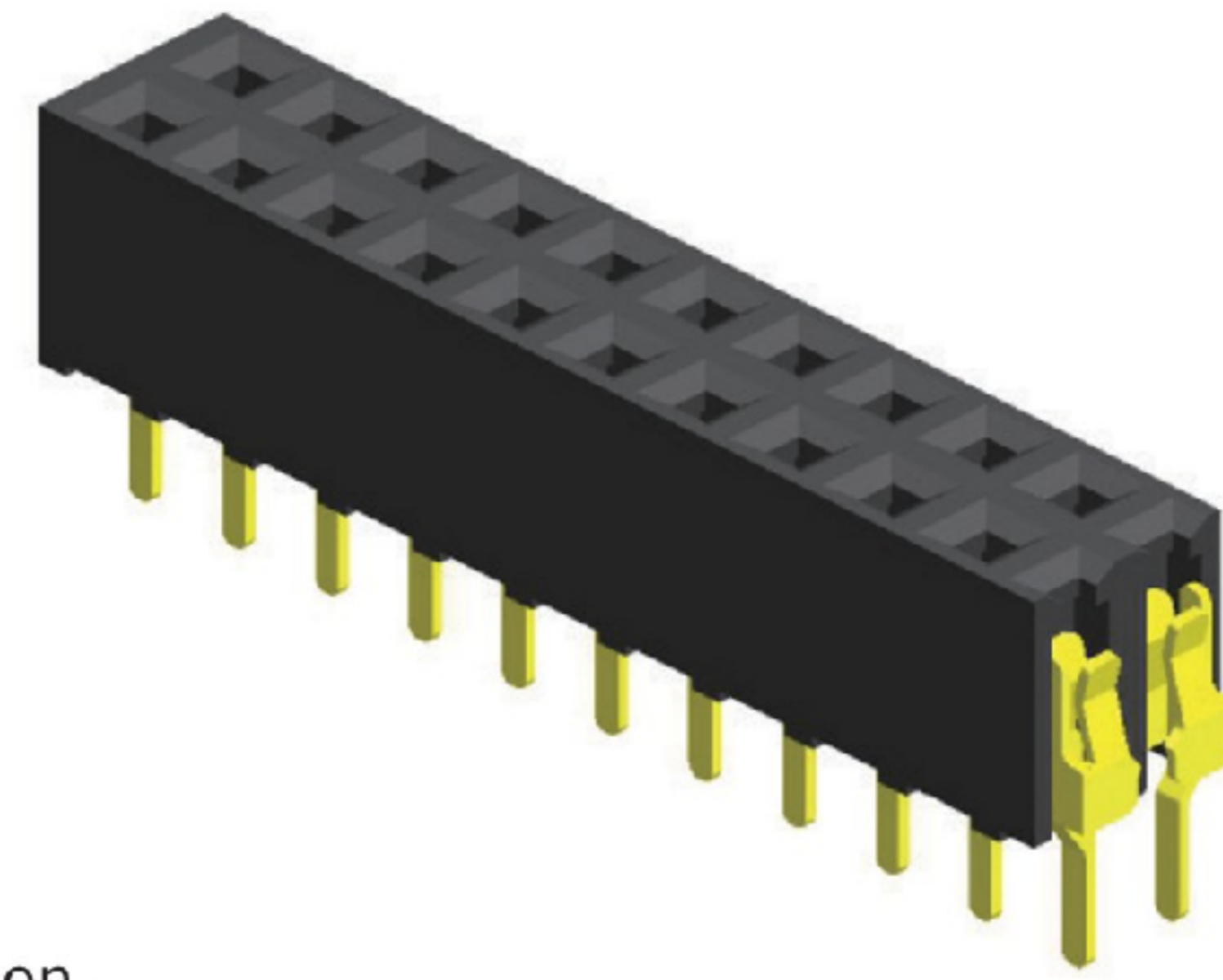
Dim.C	NOTE
4mm	02~05pins
8.05mm	06~40pins

东莞市溪榜电子有限公司 DONG GUAN XI BANG ELECTRONICS CO., LTD.	GENERAL TOLERANCE		DESIGNED:	DATE:	DWG. NO. XB-PM-A-20-208	TITLE. 2.00 FEMALE HEADER DUAL ROWS DIP TYPE CONNECTOR
	X.*±5.0*	X.±0.30	CHECKED:	DATE:		
	.X*±3.0*	.X±0.25	CO SINGED:	DATE:	PART NO. XB-PM-A-20-208	
	.XX*±2.0*	.XX±0.15	APPROVED:	DATE:		
REV. 01	UNIT. mm	SCALE. 4:1	PAGE. 1/1			

1 2 3 4 5 6 7 8 9

Specifications

Current Rating : 2.0 Ampere
 Insulation Resistance : 1000 MΩ Min
 Dielectric Withstanding : 500V AC
 Contact Resistance : 20 mΩ Max
 Operating Temperature : -40°C to +105°C

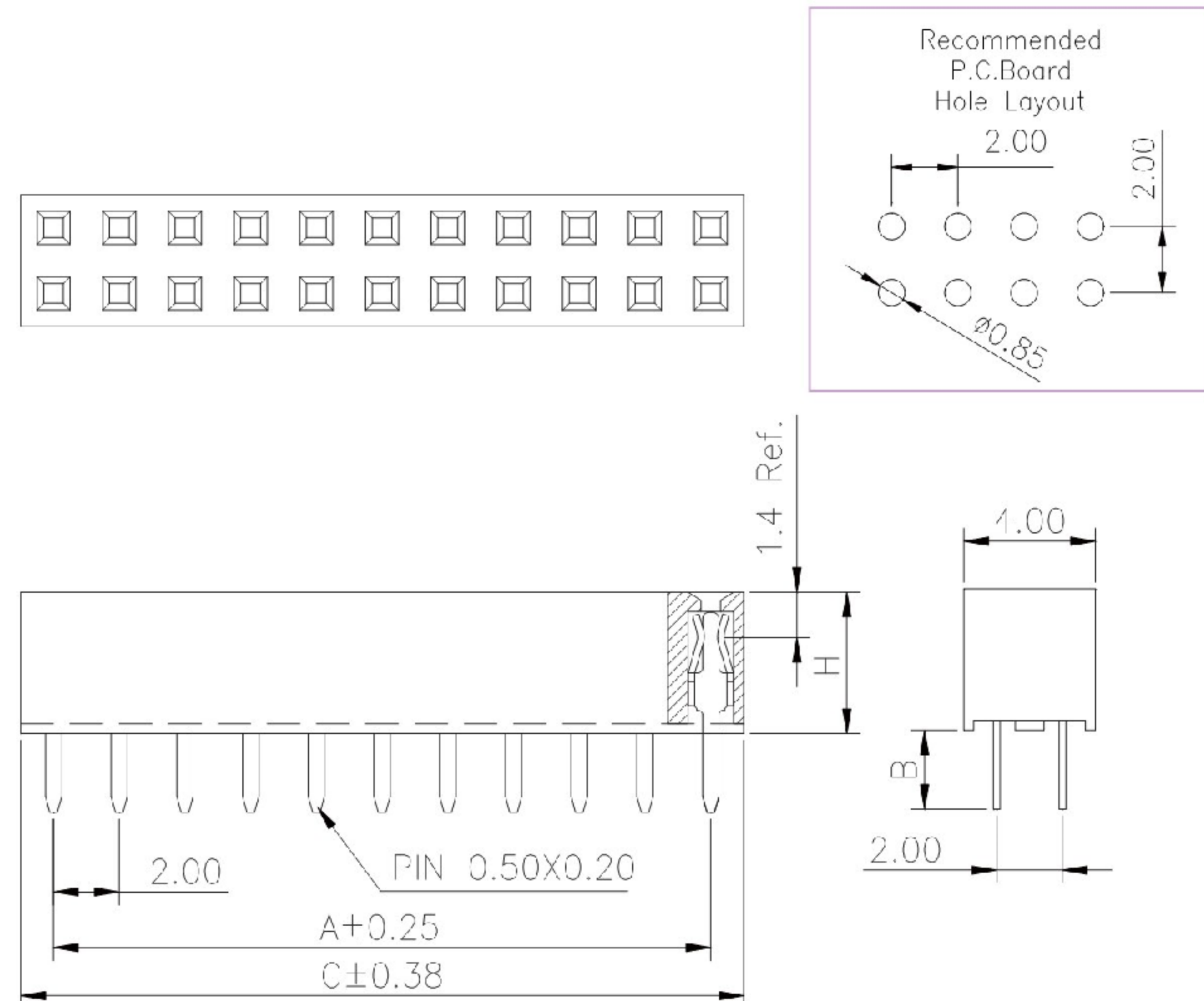
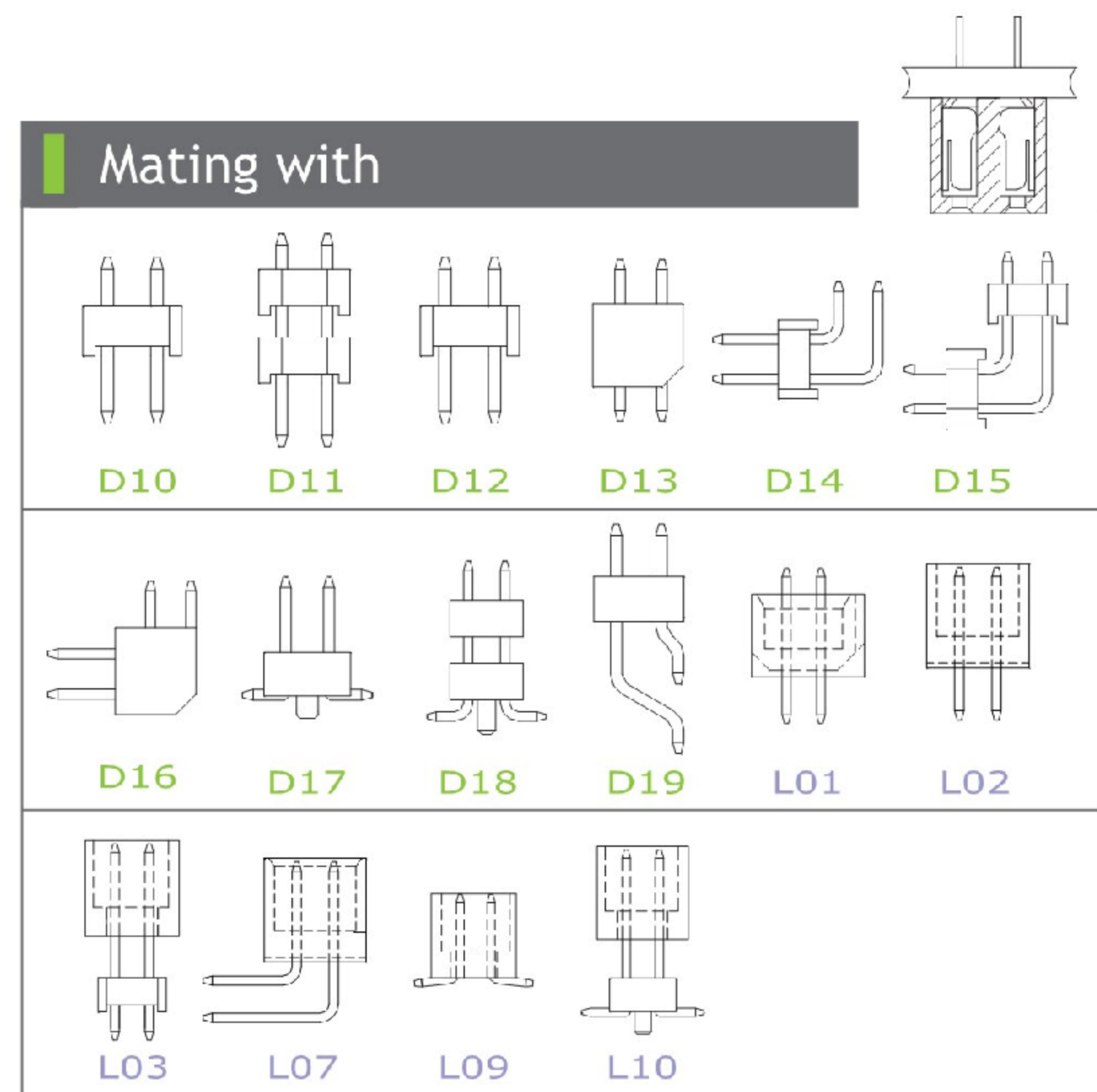


Materials

Contact Material : Phosphor Bronze
 Insulation Material : High Temperature Thermoplastic, 94V-0 Nylon

All materials must meet Greenconn's requirements for environmental protection.

Mating with



P.S. : Suggested mating pin length : 2.9 ~ 4.0 mm

* For Coded Dimension Not Inside The Table, Please Refer To "Ordering Information"

No. of Pins/Row	Dimension Information		No. of Pins/Row	Dimension Information		No. of Pins/Row	Dimension Information		No. of Pins/Row	Dimension Information	
	A	C		A	C		A	C		A	C
03	4.00	6.60	11	20.00	22.60	21	40.00	42.60	31	60.00	62.60
04	6.00	8.60	12	22.00	24.60	22	42.00	44.60	32	62.00	64.60
05	8.00	10.60	13	24.00	26.60	23	44.00	46.60	33	64.00	66.60
06	10.00	12.60	14	26.00	28.60	24	46.00	48.60	34	66.00	68.60
07	12.00	14.60	15	28.00	30.60	25	48.00	50.60	35	68.00	70.60
08	14.00	16.60	16	30.00	32.60	26	50.00	52.60	36	70.00	72.60
09	16.00	18.60	17	32.00	34.60	27	52.00	54.60	37	72.00	74.60
10	18.00	20.60	18	34.00	36.60	28	54.00	56.60	38	74.00	76.60
			19	36.00	38.60	29	56.00	58.60	39	76.00	78.60
			20	38.00	40.60	30	58.00	60.60	40	78.00	80.60

东莞市溪榜电子有限公司
 DONG GUAN XI BANG ELECTRONICS CO., LTD.

REV. 01 UNIT. mm SCALE. 5:1 PAGE. 1/1

GENERAL TOLERANCE	
X' ± 5.0'	X ± 0.30
.X' ± 3.0'	.X ± 0.25
.XX' ± 2.0'	.XX ± 0.15
.XXX' ± 1.0'	.XXX ± 0.10

DESIGN: _____ DATE: _____
 CHECKED: _____ DATE: _____
 AUDITED: _____ DATE: _____
 APPROVED: _____ DATE: _____

DWG. NO. XB-PM-A-20-208
 PART NO. XB-PM-A-20-208

TITLE. 2.00 FEMALE HEADER
 SINGLE ROW DIP TYPE
 BASE 4.30H