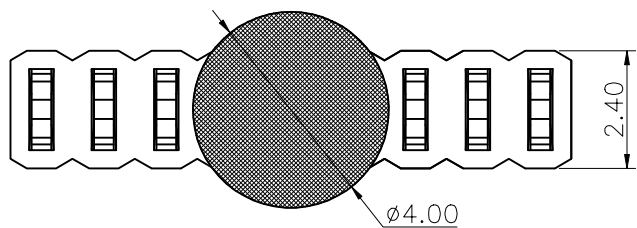
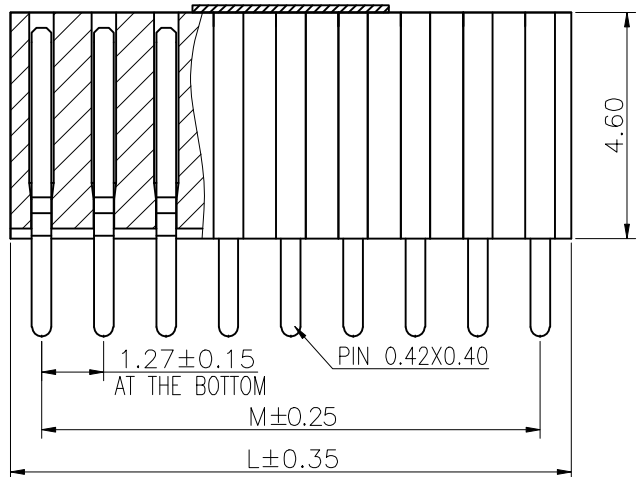


1 2 3 4 5 6 7 8 9

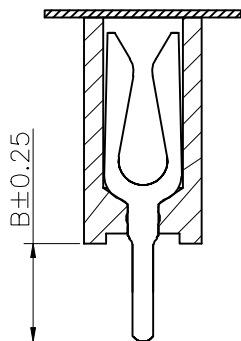
F



E



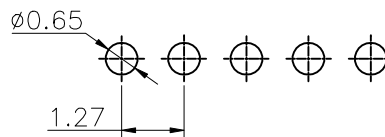
D



C

Specifications
 Current Rating:1Amp
 Insulation Resistance:1000MΩMin.
 Dielectric Withstanding Voltage:300VAC
 Contact Resistance:20mΩMax.
 Operating Temperature:-40°C to +105°C
 Materials
 Contact Material:Phosphor Bronze
 Insulator Material:High Temperature Thermoplastic, UL 94V-0 LCP or the equivalent material
 All materials must meet Greenconn requirement for environment protection.

Recommended P.C.Board Layout
 (Tolerance:±0.05)



No. of PIN/ROW	Dimension Information	
	M	L
02	1.27	2.54
03	2.54	3.81
04	3.81	5.08
05	5.08	6.35
06	6.35	7.62
07	7.62	8.89
08	8.89	10.16
09	10.16	11.43
10	11.43	12.70
11	12.70	13.97
12	13.97	15.24
13	15.24	16.51
14	16.51	17.78
15	17.78	19.05
16	19.05	20.32
17	20.32	21.59
18	21.59	22.86
19	22.86	24.13
20	24.13	25.40
21	25.40	26.67
22	26.67	27.94
23	27.94	29.21
24	29.21	30.48
25	30.48	31.75
26	31.75	33.02
27	33.02	34.29
28	34.29	35.56
29	35.56	36.83
30	36.83	38.10
31	38.10	39.37
32	39.37	40.64
33	40.64	41.91
34	41.91	43.18
35	43.18	44.45
36	44.45	45.72
37	45.72	46.99
38	46.99	48.26
39	48.26	49.53
40	49.53	50.80
41	50.80	52.07
42	52.07	53.34
43	53.34	54.61
44	54.61	55.88
45	55.88	57.15
46	57.15	58.42
47	58.42	59.69
48	59.69	60.96
49	60.96	62.23
50	62.23	63.50

Ordering Information

XB-PM-A-127-101

Plastic specifications 1=Single row 2=Dual row 3=Tripe row 4=Quadruple	Water code No. of Pins per Row 02~50	Positioning column information A=No locating post B=Round post C=Square post	Pin length See the drawing	Color 1=Black 2=White 3=Yellow E=Beige	Packing code C=Tube D=Tape&Reel E=Cap+Tube F=Cap+Tape&Reel G=Acetate Tape+Tube H=Acetate Tape+Tape&Reel
Plating code 01=Tin 02=Gold Flash 05=Gold Flash/Tin 22=Matte Tin			Insulator Material C=LCP	Contact Material A/S/K/T=Phosphor Bronze	

A

东莞市溪榜电子有限公司
 DONG GUAN XI BANG ELECTRONICS CO., LTD.
 Switch Connector

GENERAL TOLERANCE	
X'±5.0'	X.±0.30
.X'±3.0'	.X±0.25
.XX'±2.0'	.XX±0.15
.XXX'±1.0'	.XXX±0.10

DESIGN:	DATE:
CHECKED:	DATE:
AUDITED:	DATE:
APPROVED:	DATE:

DWG. NO.	XB-PM-A-127-101
PART NO.	XB-PM-A-127-101

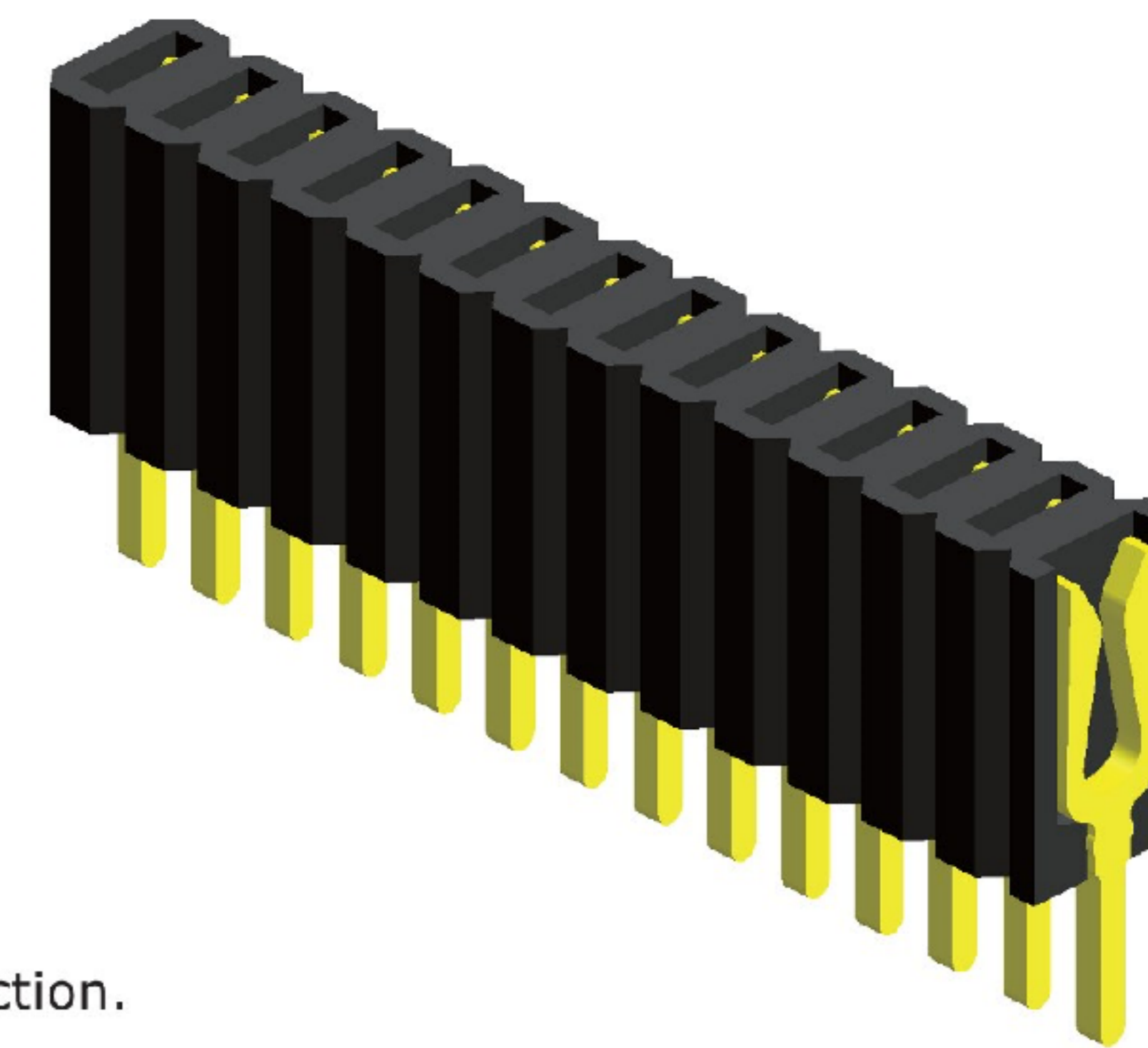
TITLE:
 1.27 FEMALE HEADER
 SINGLE ROW DIP TYPE

REV. 01	UNIT. mm	SCALE. 3:1	PAGE. 1/1
---------	----------	------------	-----------

1 2 3 4 5 6 7 8 9

Specifications

Current Rating : 1.0 Ampere
 Insulation Resistance : 1000 MΩ Min
 Dielectric Withstanding : 300V AC
 Contact Resistance : 20 mΩ Max
 Operating Temperature : -40°C to +105°C

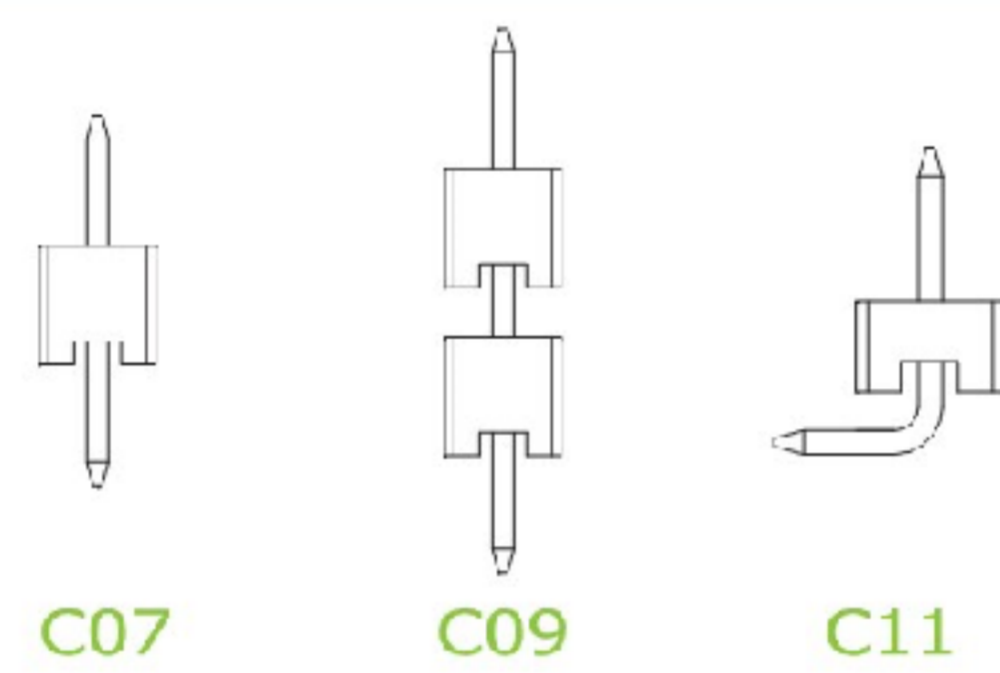


Materials

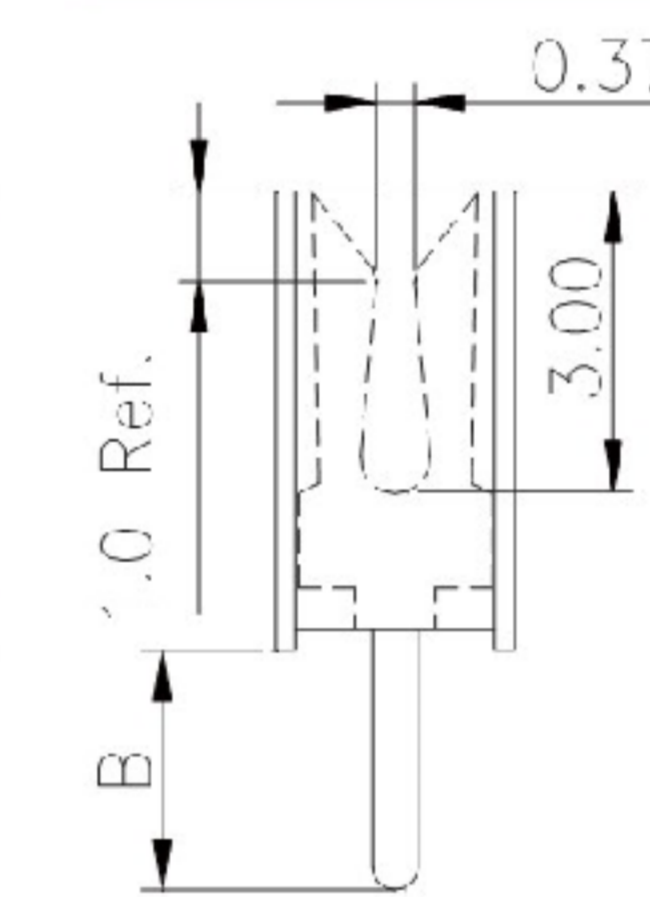
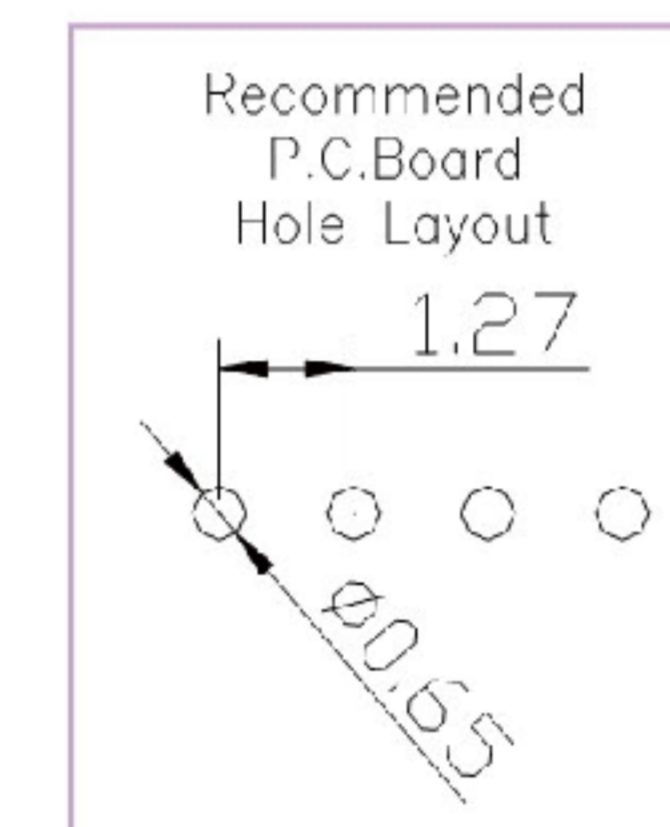
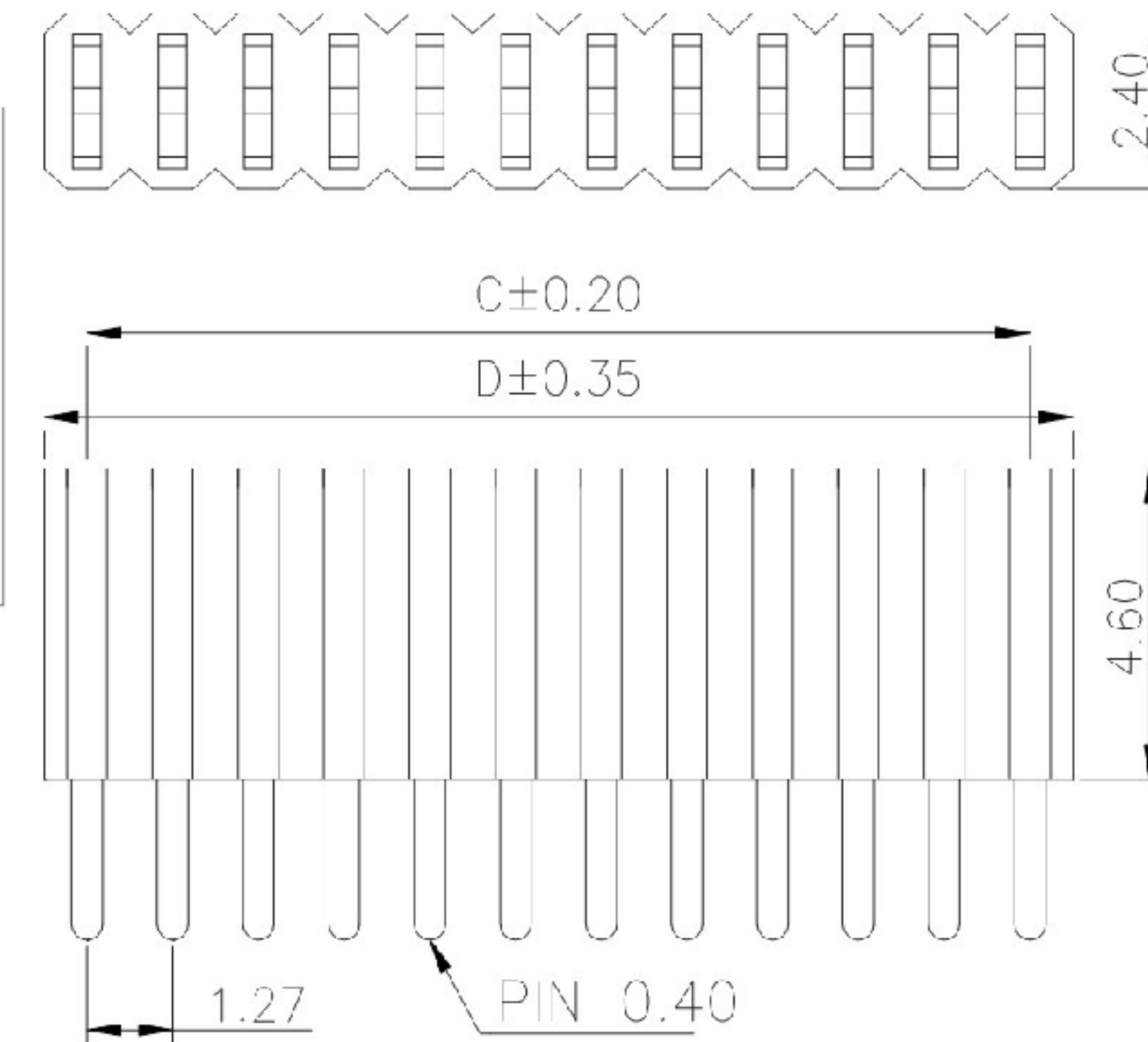
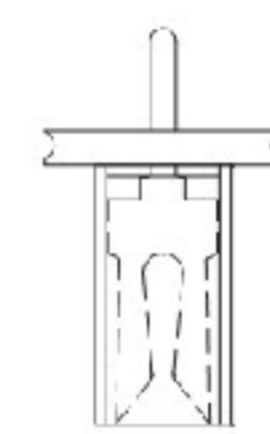
Contact Material : Phosphor Bronze
 Insulation Material : High Temperature Thermoplastic, 94V-0 LCP

All materials must meet Greenconn's requirements for environmental protection.

Mating with



P.S. : Suggested mating pin length : 2.0 ~ 2.8 mm



* For Coded Dimension Not Inside The Table, Please Refer To "Ordering Information"

No. of Pins/Row	Dimension Information		No. of Pins/Row	Dimension Information		No. of Pins/Row	Dimension Information		No. of Pins/Row	Dimension Information	
	C	D		C	D		C	D		C	D
02	1.27	2.54	14	16.51	17.78	27	33.02	34.29	40	49.53	50.80
03	2.54	3.81	15	17.78	19.05	28	34.29	35.56	41	50.80	52.07
04	3.81	5.08	16	19.05	20.32	29	35.56	36.83	42	52.07	53.34
05	5.08	6.35	17	20.32	21.59	30	36.83	38.10	43	53.34	54.61
06	6.35	7.62	18	21.59	22.86	31	38.10	39.37	44	54.61	55.88
07	7.62	8.89	19	22.86	24.13	32	39.37	40.64	45	55.88	57.15
08	8.89	10.16	20	24.13	25.40	33	40.64	41.91	46	57.15	57.42
09	10.16	11.43	21	25.40	26.67	34	41.91	43.18	47	57.42	59.69
10	11.43	12.70	22	26.67	27.94	35	43.18	44.45	48	59.69	60.96
11	12.70	13.97	23	27.94	29.21	36	44.45	45.72	49	60.96	62.23
12	13.97	15.24	24	29.21	30.48	37	45.72	46.99	50	62.23	63.50
13	15.24	16.51	25	30.48	31.75	38	46.99	48.26			
			26	31.75	33.02	39	48.26	49.53			

XB 东莞市溪榜电子有限公司
 DONG GUAN XI BANG ELECTRONICS CO., LTD.

REV. 01 UNIT. mm SCALE. 5:1 PAGE. 1/1

GENERAL TOLERANCE	
X. ± 5.0'	X. ± 0.30
.X ± 3.0'	.X ± 0.25
.XX ± 2.0'	.XX ± 0.15
.XXX ± 1.0'	.XXX ± 0.10

DESIGN:	DATE:
CHECKED:	DATE:
AUDITED:	DATE:
APPROVED:	DATE:

DWG. NO. XB-PM-A-127-101
 PART NO. XB-PM-A-127-101

TITLE. 2.00 FEMALE HEADER SINGLE ROW DIP TYPE BASE 4.30H