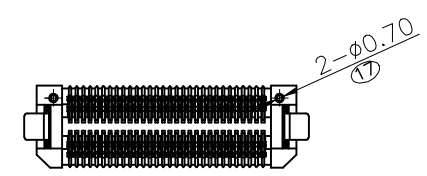
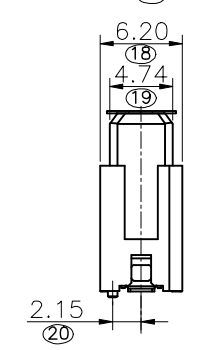
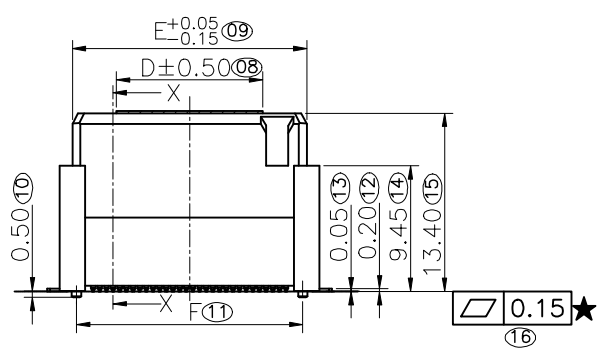
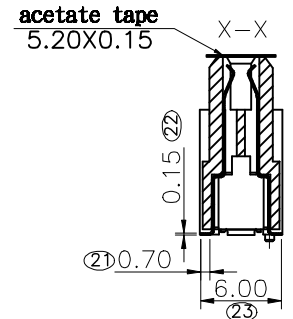
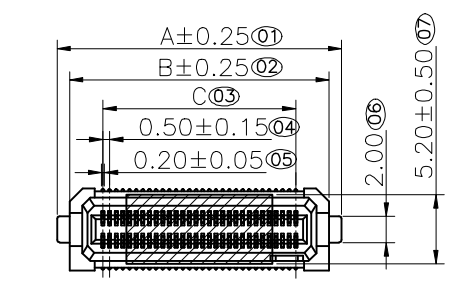


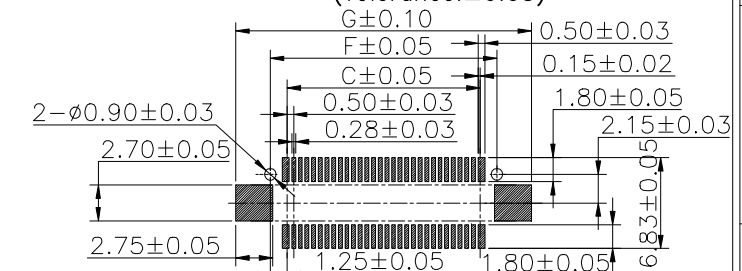
1 2 3 4 5 6 7 8 9

F
E
D
C
B
A



Specifications
 Current Rating:0.4Amp
 Insulation Resistance:100MΩMin.
 Dielectric Withstanding Voltage:250VAC
 Contact Resistance:80mΩ Max.
 Operating Temperature:-40°C to +105°C
Materials
 Contact Material:copper alloy
 Insulator Material:High Temperature Thermoplastic, UL 94V-0 LCP or the equivalent material
 All materials must meet GREENCONN hazardous substances control standards.
 ★★: Critical Characteristics, indicates product characteristics, functionalities, and manufacturing processes regarding to customer's specifications
 ★★: Safety Features indicates product characteristics, functionalities, and manufacturing processes complying to legal regulations stated by local government

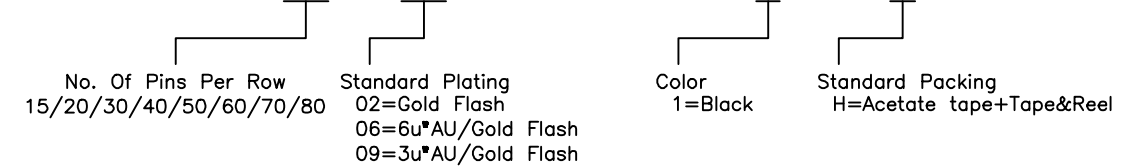
Recommended P.C.Board Layout
 (Tolerance:±0.05)



本脚数	80	46.40	44.50	39.50	28.50	42.60	42.00	47.20
本脚数	70	41.40	39.50	34.50	28.50	37.60	37.00	42.20
本脚数	60	36.40	34.50	29.50	28.50	32.60	32.00	37.20
本脚数	50	31.40	29.50	24.50	28.50	27.60	27.00	32.20
本脚数	40	26.40	24.50	19.50	11.00	22.60	22.00	27.20
本脚数	30	21.40	19.50	14.50	11.00	17.60	17.00	22.20
本脚数	20	16.40	14.50	9.50	11.00	12.60	12.00	17.20
本脚数	15	13.90	12.00	7.00	11.00	10.10	9.50	14.70
备注	No. of PIN/ROW	A	B	C	D	E	F	G

Ordering Information

XB-CGAC-201-B003



	3RD.ANG PROJ.	GENERAL TOLERANCE		DESIGNED:	DATE:	DWG. NO.	TITLE.
		X.±5.0'	X.±0.35				
REV. A	UNIT. mm	SCALE. 2:1	PAGE. 1/1	.X'±3.0'	.X±0.30	XB-CGAC-201-B003	
				.XX'±2.0'	.XX±0.20		
				.XXX±1.0'	.XXX±0.10	XB-CGAC-201-B003	

1 2 3 4 5 6 7 8 9