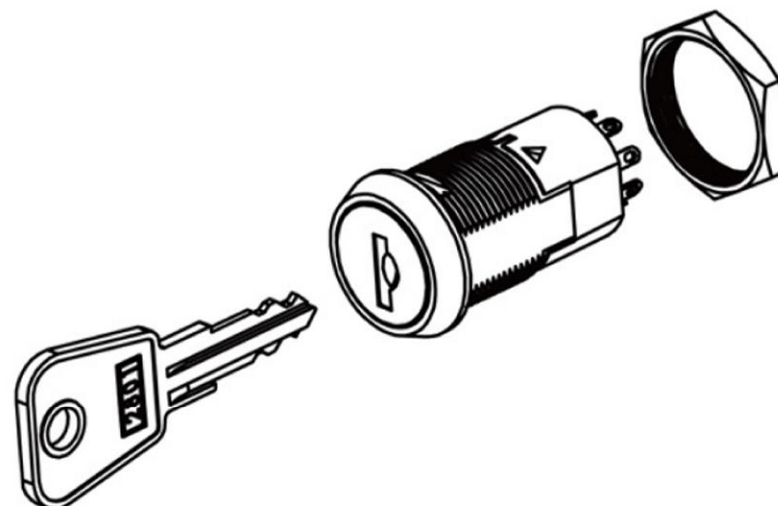
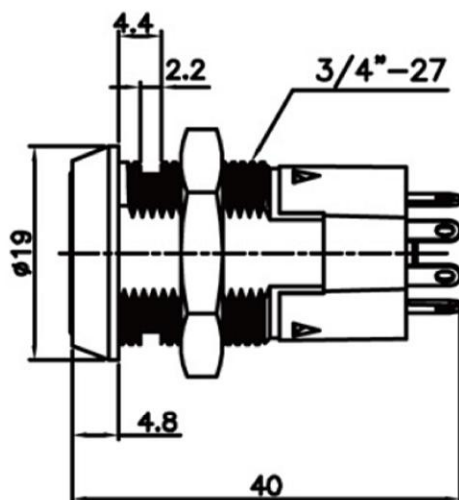
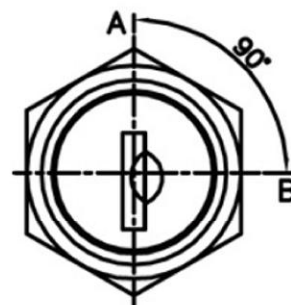
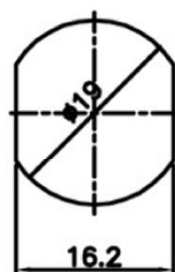


# ROHS



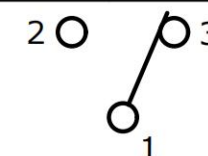
Recommended hole size

Unit: mm



▲ SWITCH FUNCTION

POS. 1	POS. 2
ON	ON
1-3	1-2



▲ SPDT ON-ON  
CONTACT CONFIGURATION

Zinc alloy die cast housing and cylinder.  
Bright nickel plated standard.  
Dust shutter mechanism.  
5 disc tumbler mechanism.  
Reversible double-bitted brass keys, nickel plated.  
Golden plated contacts and terminals.  
Hex nut or speed clip mounted.  
Contact Rating: 4A 125VAC, 2A 250VAC. 4A 28VDC  
Contact Resistance: 50Milli-Ohms Max.  
Insulation Resistance: 500 Meg-Ohms Min. (500VDC)  
Dielectric Strength: 1000 VAC -1 Minute.

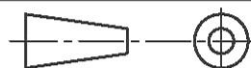
The material contained in this drawing is the property of XiBang. Any use other than that specifically authorized by XiBang is prohibited. The above drawing IS subjected to change for improvement without prior notice.



东莞市溪榜电子有限公司  
DONG GUAN XI BANG ELECTRONICS CO., LTD

TITLE : XB KEY SWITCH ELECTRONIC LOCK

MODEL : XB-S-2861



TOLERANCE  
≤1.5mm±0.1  
> 1.5mm±0.2  
>=10mm±0.3

ANGLE  
±2°

UNIT : MM	DWN.	ZENQ. CHEN	DATE	
SCALE : 3 : 1	CHK'D	PENG. GAO	DATE	
VBRSION	01	APPD.	FEI. LONG. HE	DATE

7	SPRING	STEEL WIRE	1	NATURE
6	STEEL BALL	STEEL	1	NATURE
5	BOARD	PHENOLIC RESIN	1	NATURE
4	CONTACT CLIP	PBS STRIP	2	Ag PLATED
3	FRAME	IRON STRIP	1	Ni PLATED
2	TERMINAL	BRASS STRIP	8	Ag PLATED
1	KNOB	POM	1	BLACK
NO.	PART NAME	MATERIAL	QTY.	FINISHING