

A

B

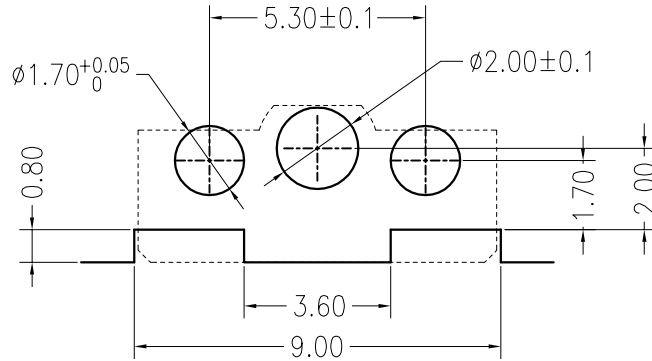
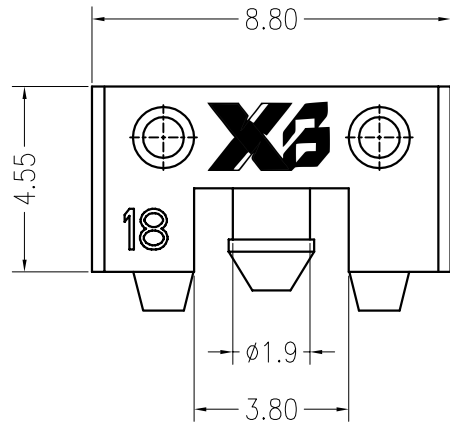
C

D

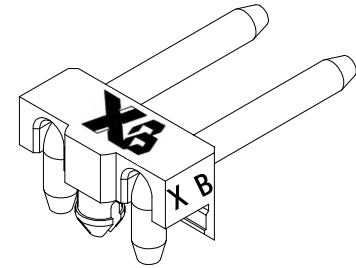
E

F

REV	ECN No.	DESCRIPTION	DESIGN	DATE
A0	-	Release	蒋建银	2018.08.29
-	-	-	-	-



Board Layout

General Tolerance:  $\pm 0.05$ 

### 主要技术参数 Main Specifications

线 数 (Poles): 02

接触电阻 (Contact resistance):  $\leq 20m\Omega$ 绝缘电阻 (Insulation resistance):  $\geq 1000M\Omega$ 

额定电压 (Rated voltage): 250V AC DC

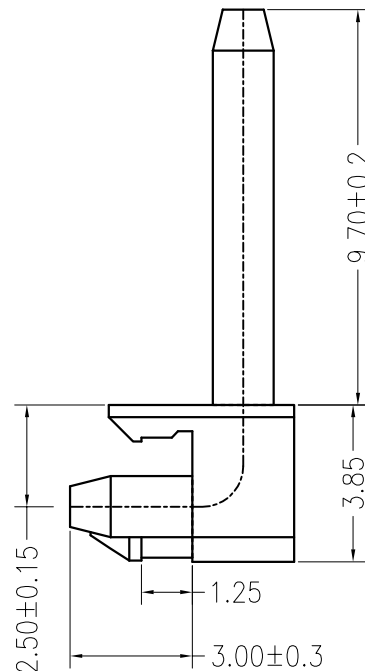
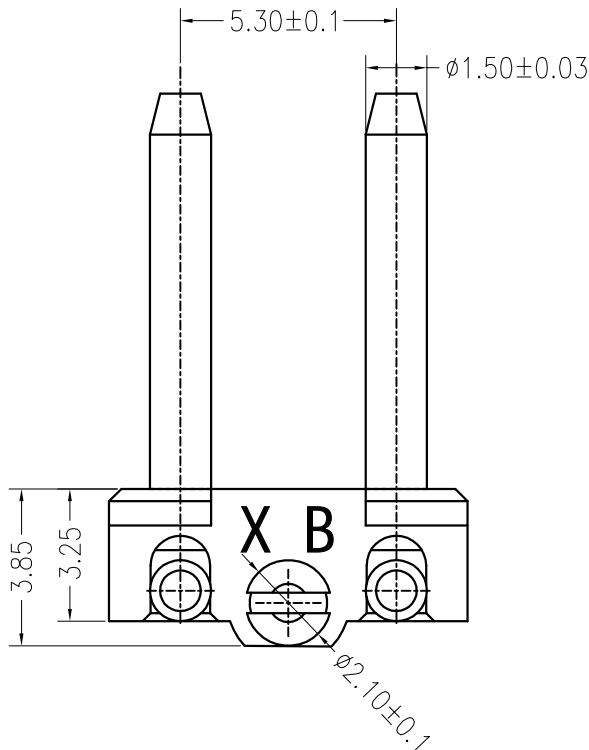
额定电流 (Rated current): 3.0A AC DC

耐 电压 (Withstand Voltage): 1000V AC/minute

温度范围 (Temperature Range):  $-40^{\circ}C \sim +110^{\circ}C$ 

### ORDER INFORMATION:

PART No.		XB-L018E-02-B1MG2-P-1		SPECIAL CODE:
No.OF CIRCUITS:		02		弯针: 9.7*3.0
PLASTIC MATERIAL:		B1M=PA46(BEIGE)		PACKAGING:
				P=PE
				Metal code:
				2=Brass
				PLATING:
				G=Ni



ITEM	COMPONENT	Q'TY	MATERIAL	FINISH
C				
B	CONTACT	2 PCS	Brass	Ni-plated
A	HOUSING	1 PCS	PA46	UL 94V-0, COLOR:BEIGE

X.±0.5		X.±5'	USE: CUSTOMER	PART NO.: L018E-02-B1MG2-P-1
.X±0.3		.X±2'		
.XX±0.25		.XX±1'	CHKD: 田峰	DWG NO.: GCCP-1207
---		---	DR: 蒋建银	SCALE 1 : 1
UNITS: mm				SHEET 1 / 1

**东莞市溪榜电子有限公司**  
Switch Connector DONG GUAN XI BANG ELECTRONICS CO., LTD

TITLE: -  
5.3mmPITCH 90°WAFER DIP TYPE