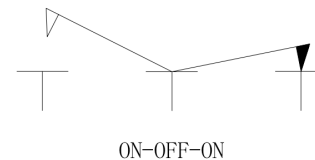
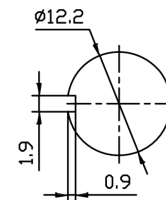


电路图 (Circuitry)



安装尺寸 (Mounting)



注: ①-⑥ 为重点检验尺寸.

Technical characteristics

SPECIFICATION: 15 A max. @ 125 VAC.
 10 A max. @ 250 VAC.
 MECHANICAL LIFE: 40,000 make-and-break cycles.
 CONTACT RESISTANCE: 50mΩ max. initial @2-4VDC
 100mA for both silver.
 INSULATION RESISTANCE: 1000 MΩ min.
 DIELECTRIC STRENGTH: 1500 VAC min.
 OPERATING TEMPERATURE: -30°C to +85°C.

Materials

CASE: PF (UL 94V-0)
 HOUSING: SPCC.
 ACTUATOR: Alloy, nickel plated.
 BUSHING: Alloy, nickel plated.
 CONTACT/TERMINALS: Copper alloy silver plated.
 RoHS



		公差 TOLERANCES		.X± 0.6	.XX± 0.4	角度	± 5°	UNIT 单位	mm	SCALE	1:1	≡ ⊕
		版本	A0	比例尺	NONE	日期	2023. 5. 17	TITLE 图名	TOGGLE SWITCH			
		核准		核対		绘图	WSL	DWG NO. 料号				
版本 VER.	变更说明 CHANGE DESCRIPTION	日期 DATE	ECN NO.	APPROVED BY	CHECKED BY	DRAWN BY		PART NO. 型号	KN3 (C)-103-AA-M-RS			