

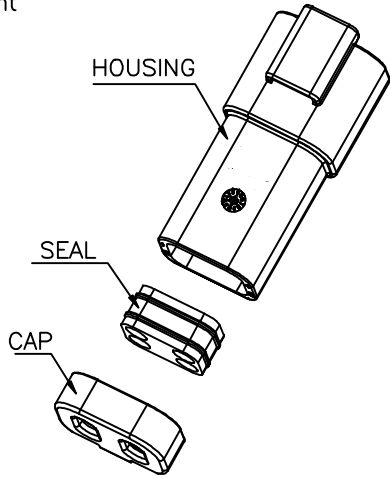
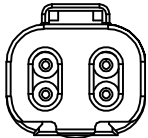
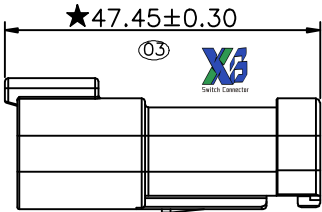
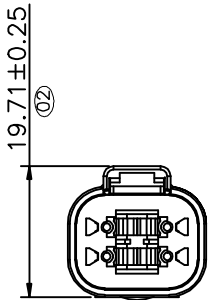
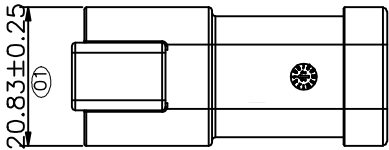
Specifications

Current Rating 14 AWG: 13.0Amp AC/DC  
16 AWG: 13.0Amp AC/DC  
18 AWG: 10.0Amp AC/DC  
20 AWG: 7.5Amp AC/DC

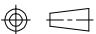
Voltage Rating: 250V AC/DC.  
Insulation Resistance:1000MΩMin.  
Dielectric Withstanding Voltage:1500VAC  
Contact Resistance:20mΩMax.  
Operating Temperature:-55°C to +125°C

Materials  
Insulator Material:High Temperature Thermoplastic, UL 94V-0 PA66 or the equivalent material

★All materials must meet Greenconn hazardous substances control standards.  
★: Significant Characteristics.  
indicates product characteristics, functionalities, and manufacturing processes regarding to customer's specifications  
★: Safety Features  
indicates product characteristics, functionalities, and manufacturing processes complying to legal regulations stated by local government



 东莞市溪榜电子有限公司  
DONG GUAN XI BANG ELECTRONICS CO., LTD.

3RD.ANG  
PROJ.  
  
PAGE. 1/1

GENERAL TOLERANCE	
X.'±3.0'	X.±0.30
.X'±2.0'	.X±0.25
.XX'±1.0'	.XX±0.20
.XXX'±0.5'	.XXX±0.15

DESIGNED:	DATE:
CHECKED:	DATE:
APPROVED:	DATE:

DWG. NO.
XB-AGZ021-04APA
PART NO.
XB-AGZ021-04APA

TITLE.
4 WAY RECEPTACLE,STANDARD SEAL EXTRA THIN SEAL,SHORT CAP SERIES