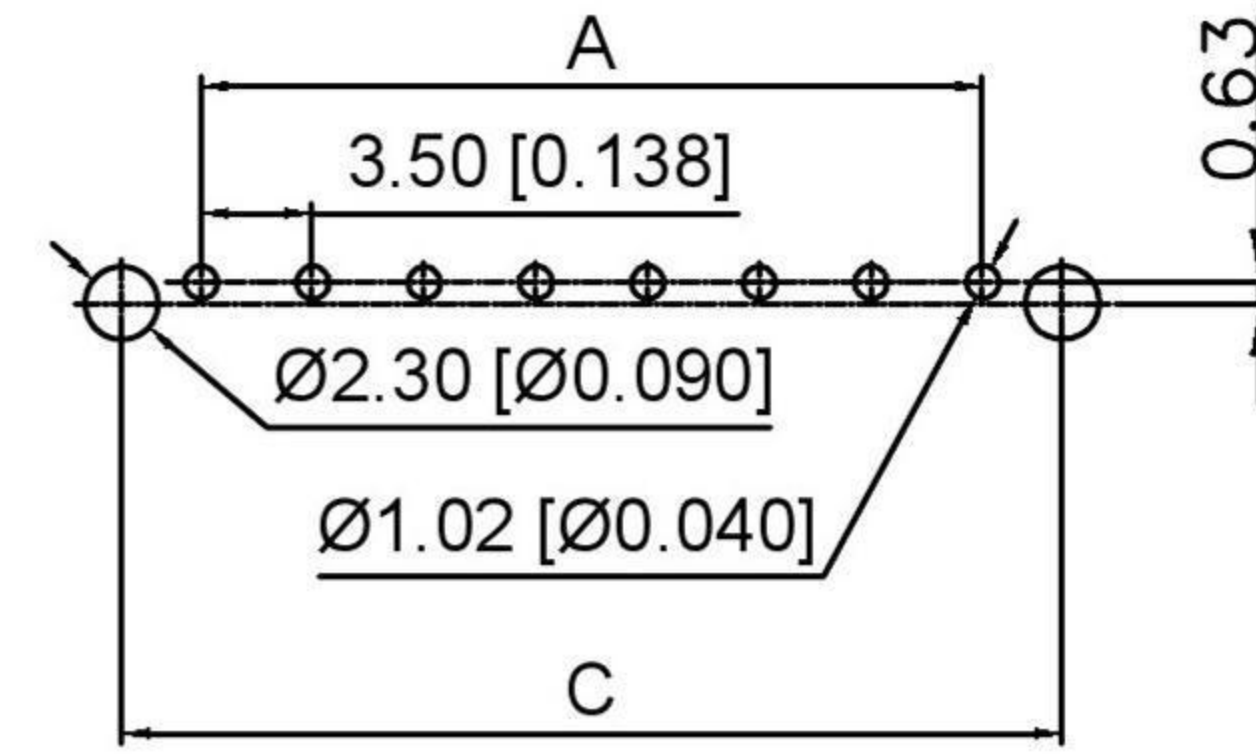
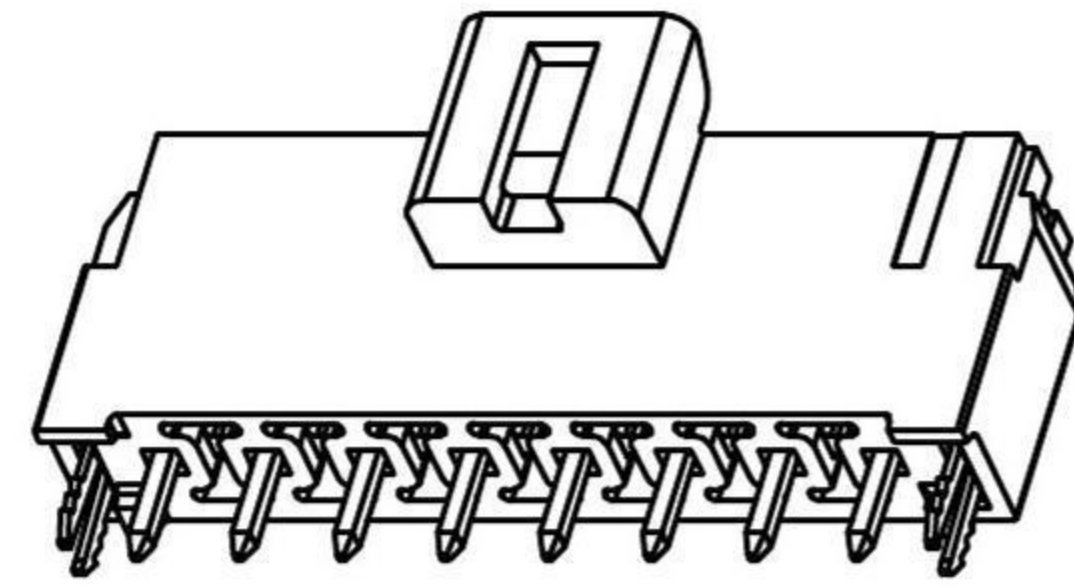


First circuit mark
(not showing on 4 and 6
circuits series)



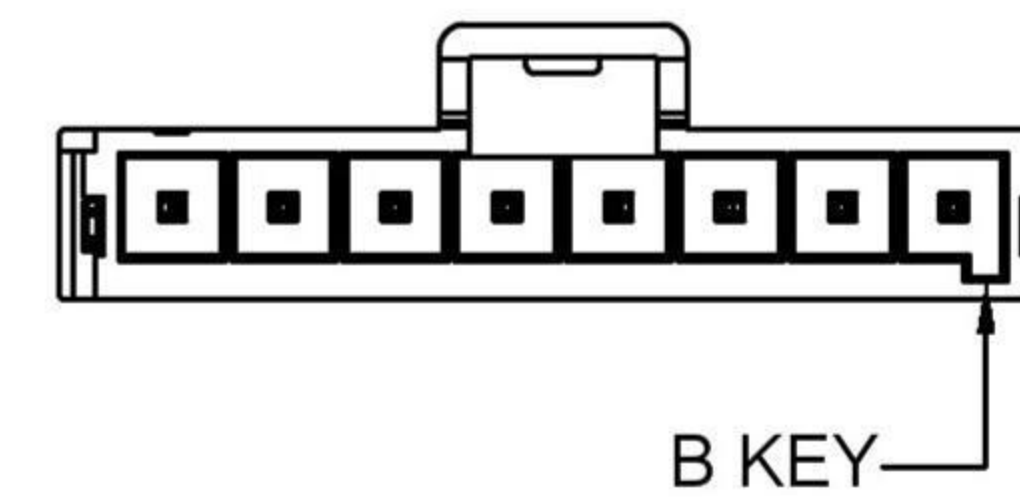
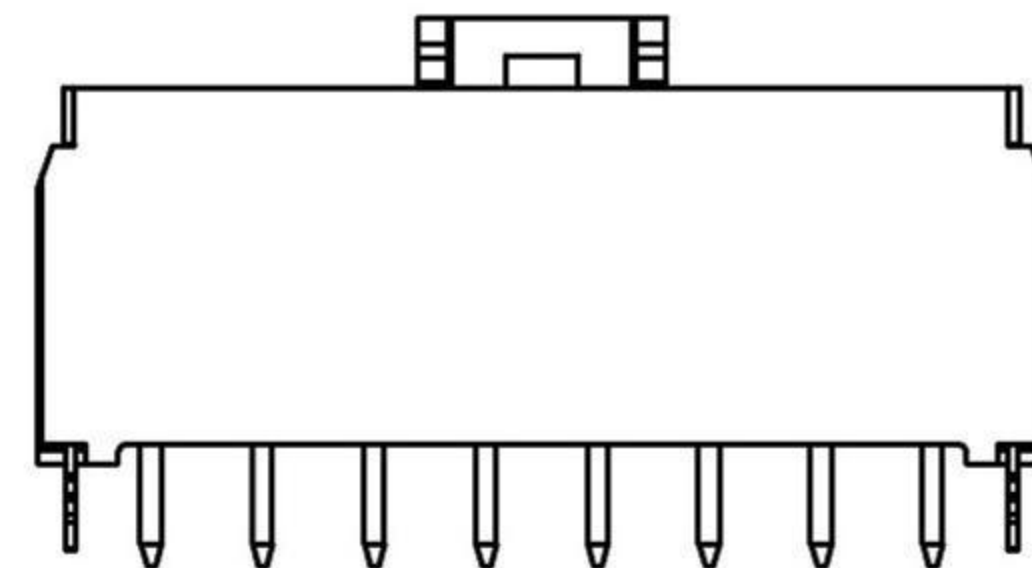
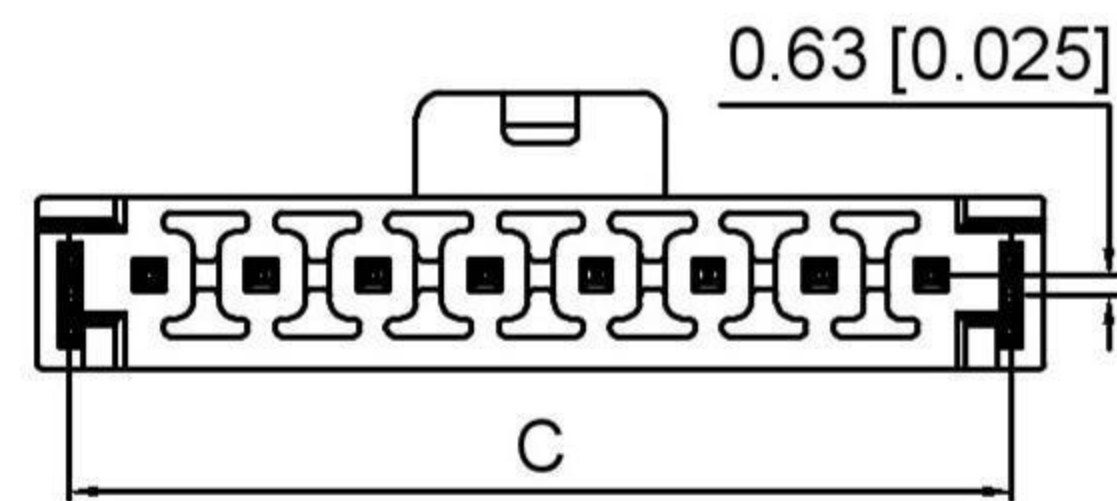
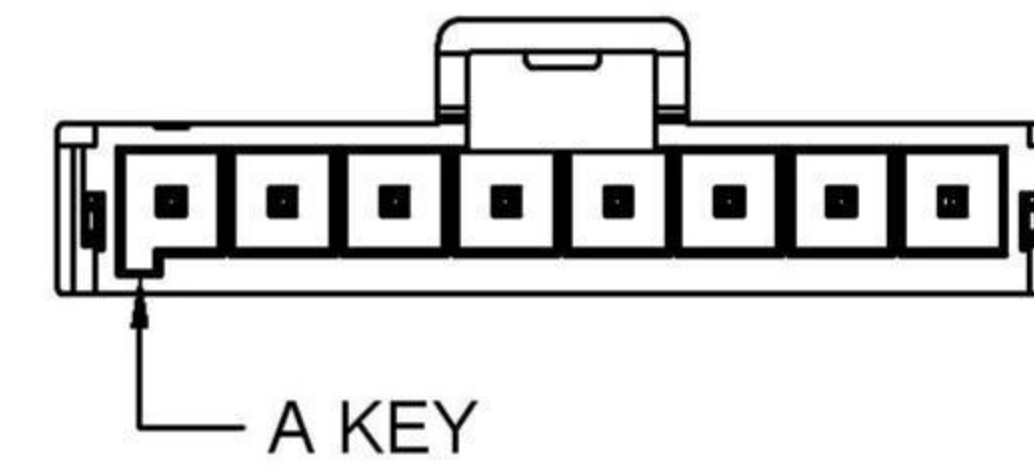
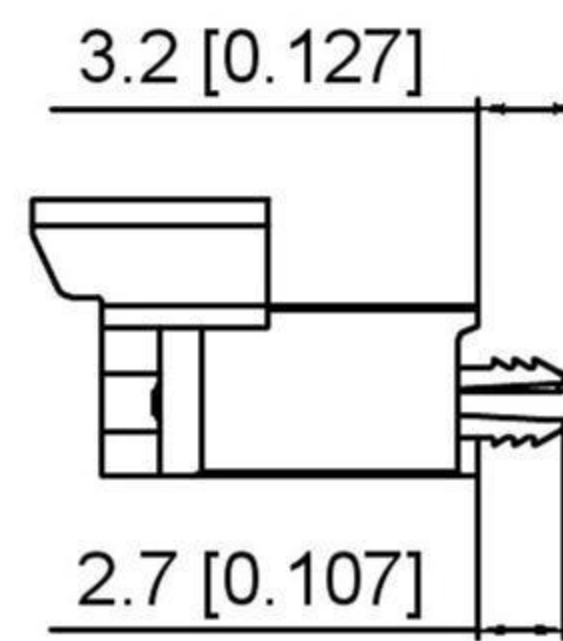
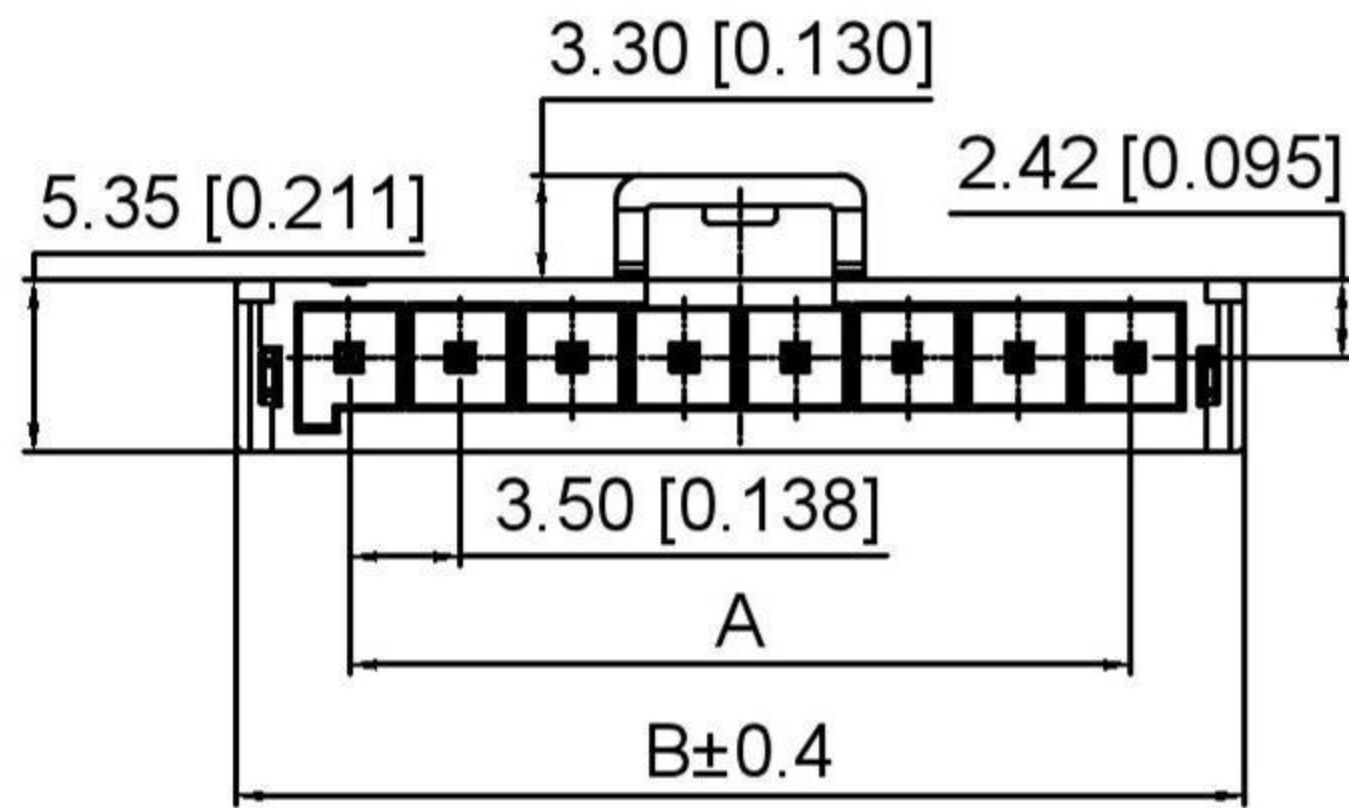
PCB Layout

Specifications:

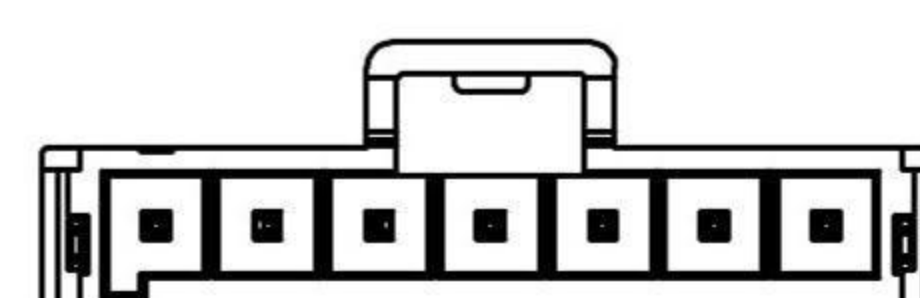
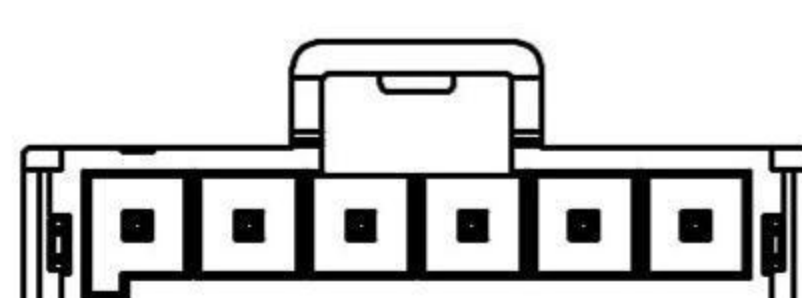
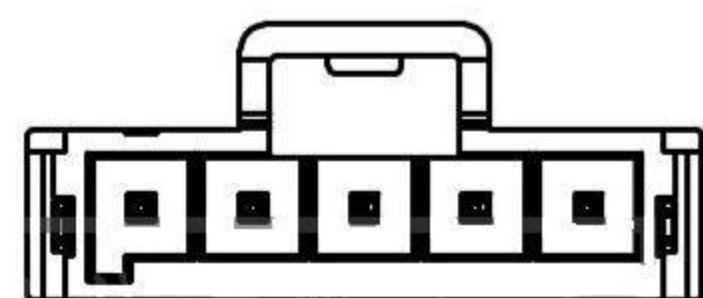
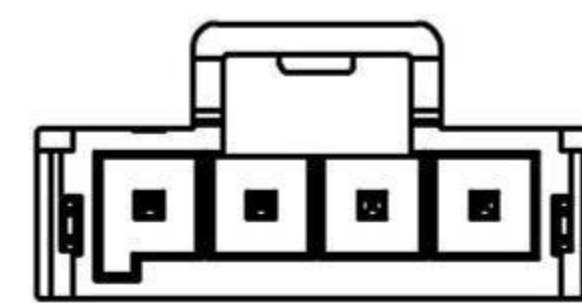
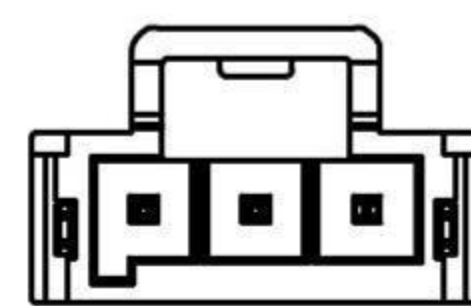
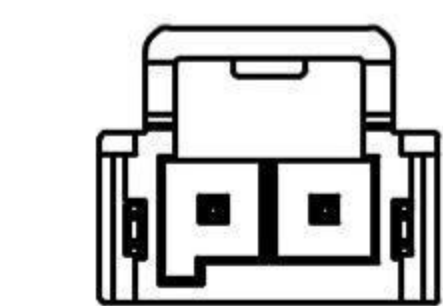
规格:
Voltage rating:400V AC/DC
额定电压: 400V AC/DC
Current rating:14A AC/DC
额定电流: 14A AC/DC
Withstanding voltage:1800V AC/minute
耐受电压: 1800V AC/分钟
Temperature range:-40°C~+105°C
温度范围: -40°C~+105°C
Insulation resistance:1000MΩ min
绝缘电阻: 1000MΩ Min
Contact resistance:15mΩ Max
接触电阻: 15mΩ Max

X3501 W V - XX X - LP SN
① ② ③ ④ ⑤ ⑥ ⑦

- 1.Series No
- 2.Category:W-Wafer
- 3.Welding Board Angle:V-Stright 180°
- 4.Row No.Pin No:XX-02~12P
- 5.Category:
A:With retention clip.A Key Black
B:With retention clip.B Key Nature
- 6.Material:LP-LCP UL94V-0
- 7.Plating:SN-Tin Plated



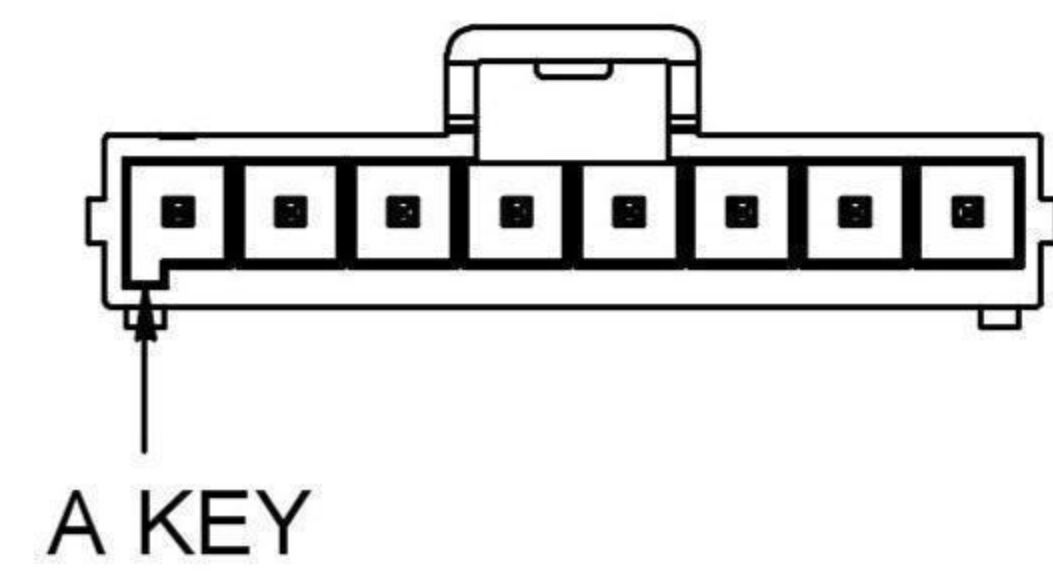
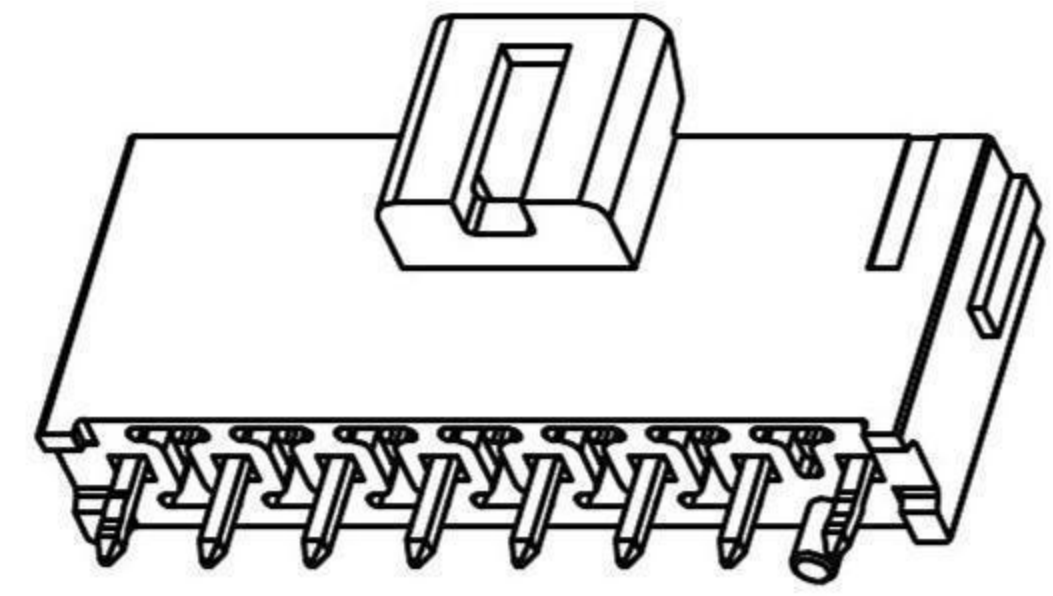
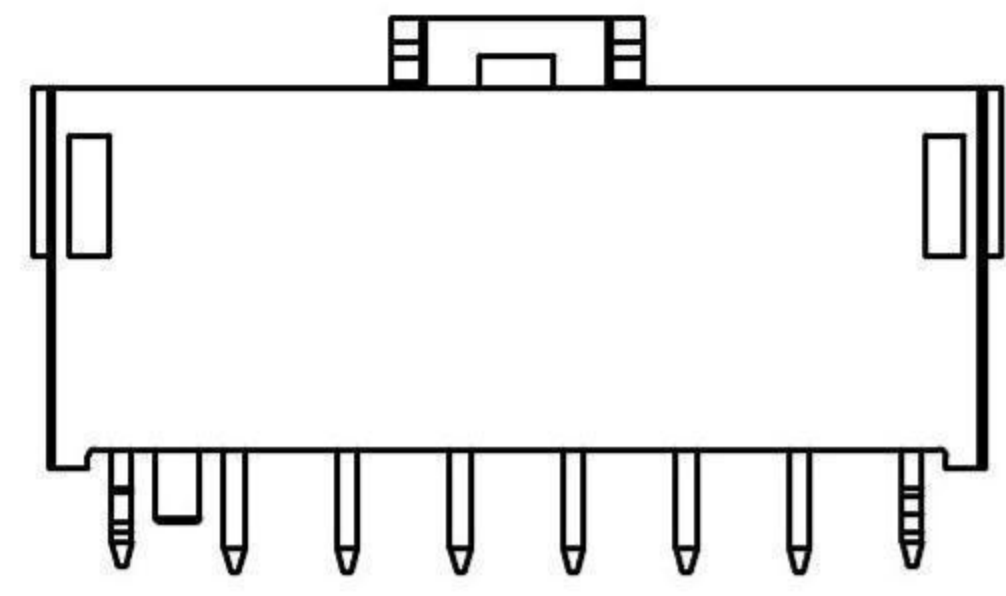
Poles	Dimensions(mm)		
	A	B	C
02	3.50	10.60	8.50
03	7.00	14.10	12.00
04	10.50	17.60	15.50
05	14.00	21.10	19.00
06	17.50	24.60	22.50
07	21.00	28.10	26.00
08	24.50	31.60	29.50
12	38.50	45.60	43.50



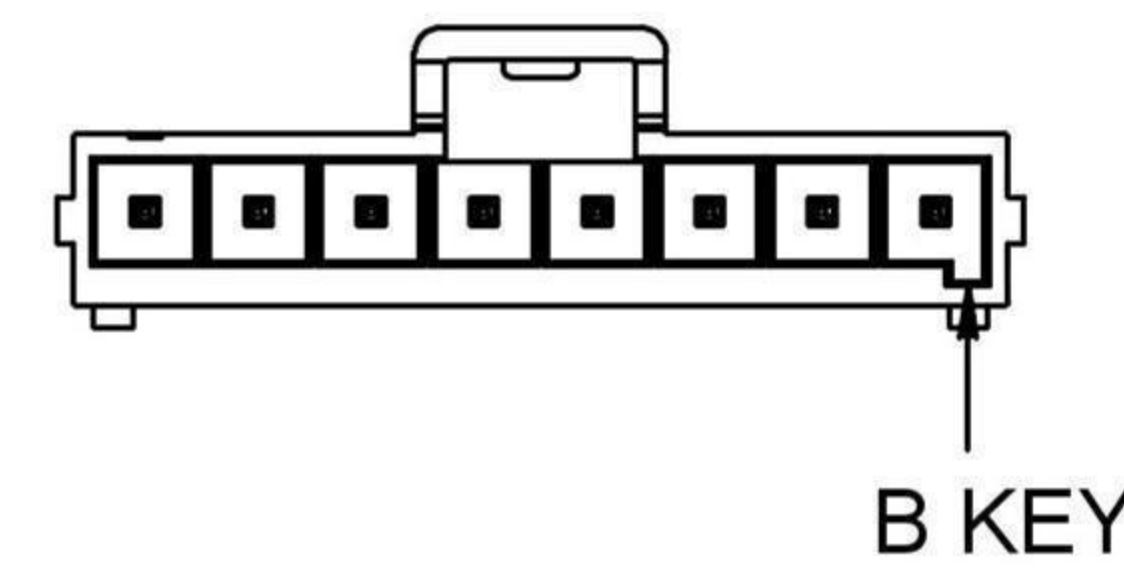
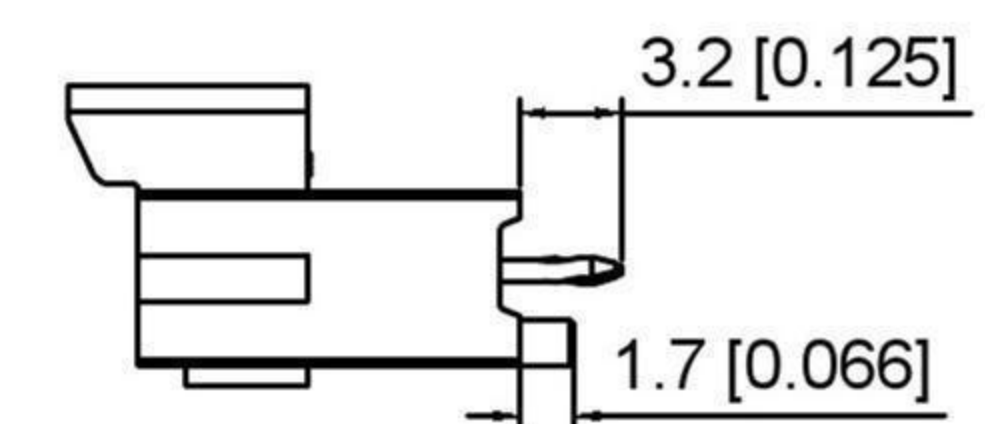
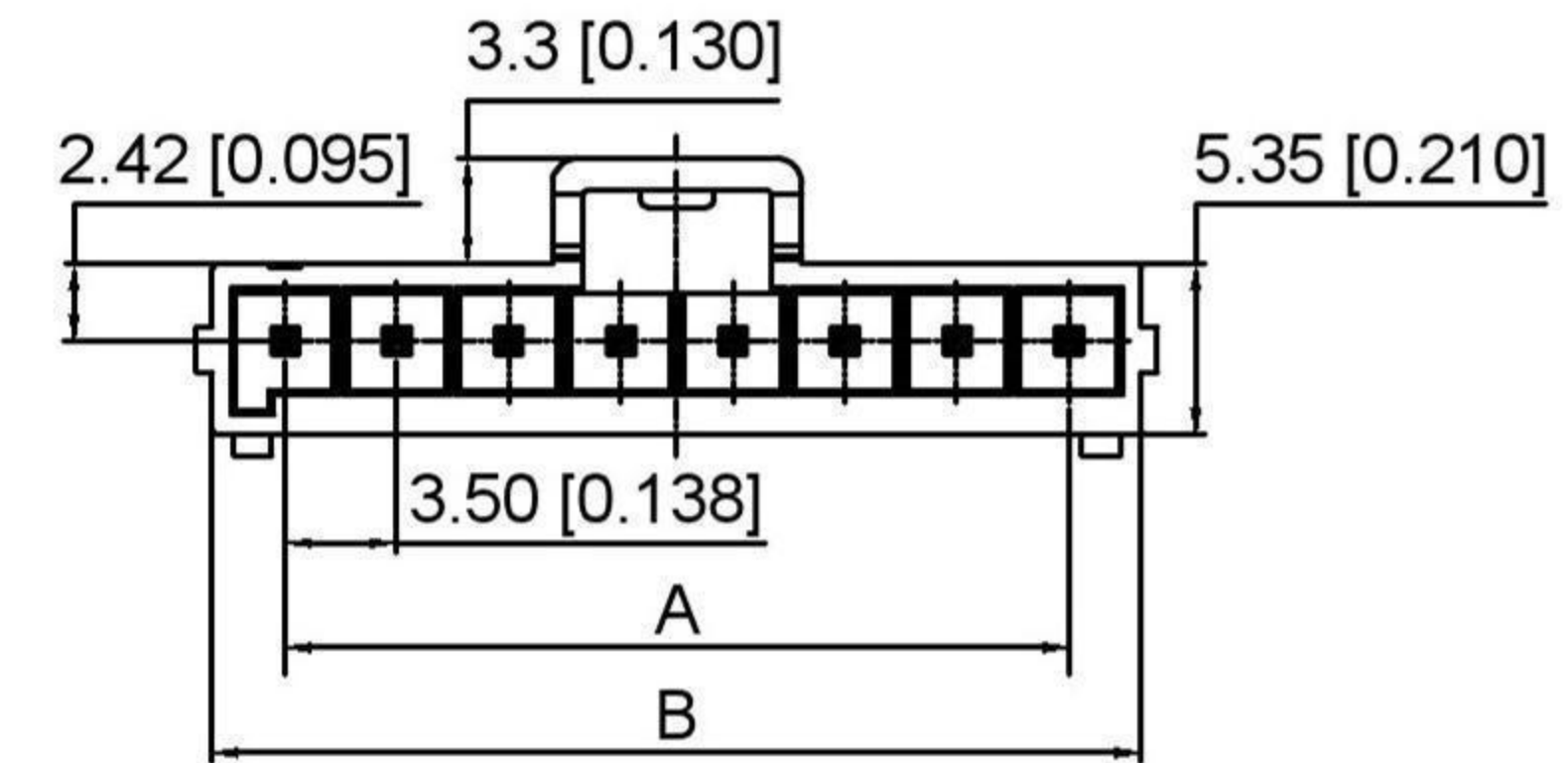
X3501WW-XXX-LPSN	LCP	Copper Alloy	WW-XXA	X3501H-A / X3501H-A0
PART NO	Material	Material(Pin)	WW-XXB	X3501H-B / X3501H-B0
			Category	Suitable Housing

REVISIONS	DATE	REVISED	APPROVED	ANGLAR	±5°
				L ≤ 4	±0.2
				4 < L ≤ 16	±0.3
				16 < L ≤ 63	±0.4
				L > 63	±0.5
				UNSPECIFIED TOLERANCES	

DSND	SCALE: N/A	MODEL TYPE:	BOARD TO BOARD CONNECTOR
DWN	VIEW:	PART NO.:	
CHKD	UNIT: mm/in	DWG NO.:	
APPD	SIZE: A4	WEIGHT	SHEET
DONG GUAN XI BANG ELECTRONIC CO., LTD		1/1	REVISION
			A0

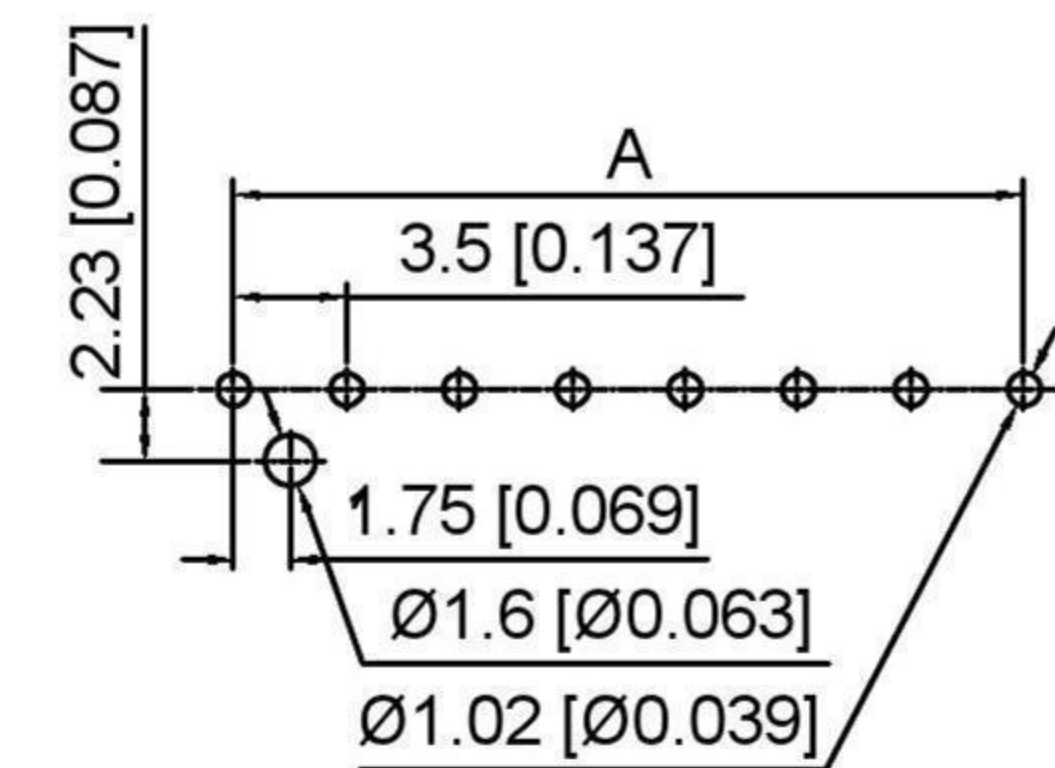
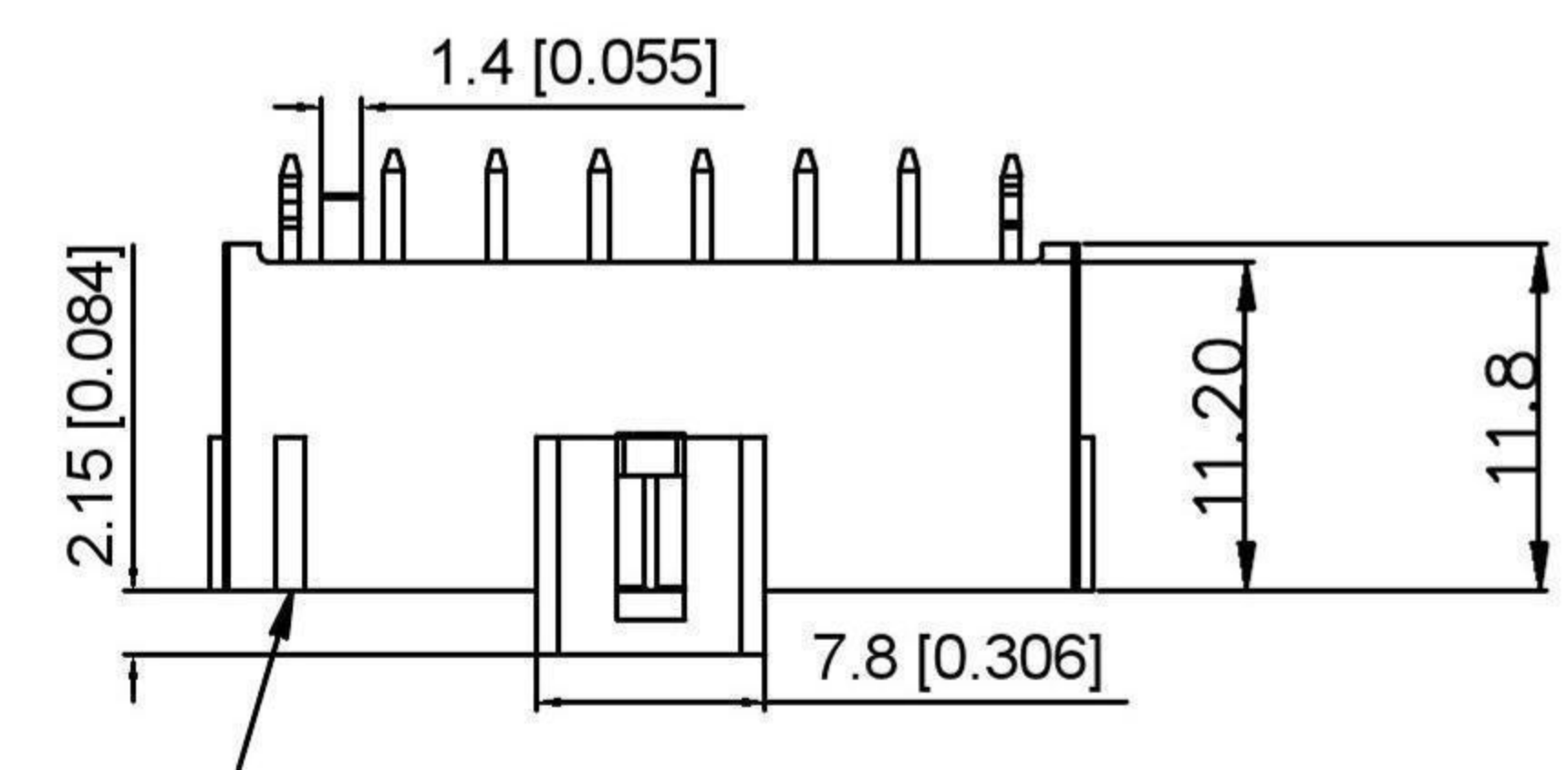


Specifications:
 规格:
 Voltage rating:400V AC/DC
 额定电压: 400V AC/DC
 Current rating:14A AC/DC
 额定电流: 14A AC/DC
 Withstanding voltage:1800V AC/minute
 耐受电压: 1800V AC/分钟
 Temperature range:-40°C~+105°C
 温度范围: -40°C~+105°C
 Insulation resistance:1000MΩ min
 绝缘电阻: 1000MΩ Min
 Contact resistance:15mΩ Max
 接触电阻: 15mΩ Max

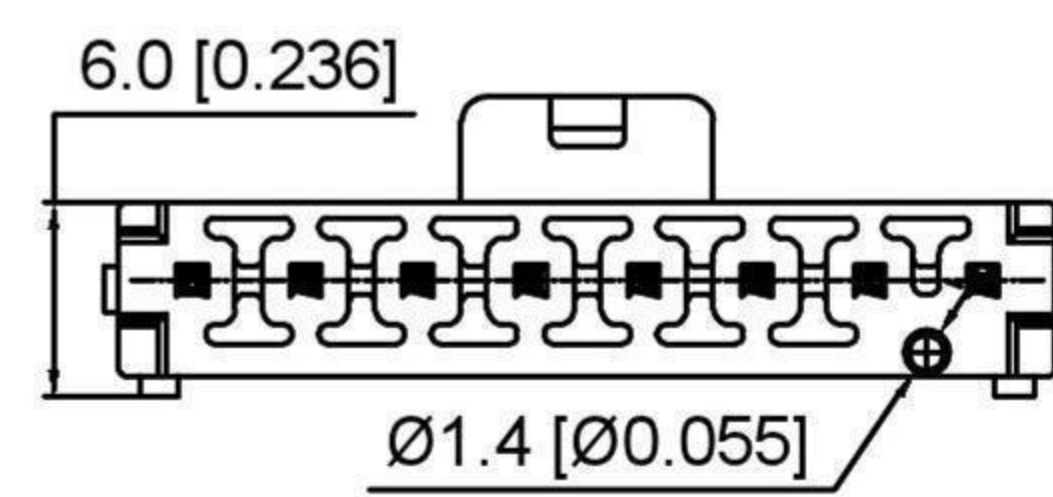


X3501 W V - XX X S - LP SN
 ① ② ③ ④ ⑤ ⑥ ⑦ ⑧

- Series No
- Category:W-Wafer
- Welding Board Angle:V-Stright 180°
- Row No.Pin No:XX-02~12P
- Category:
 A:With post.A Key Black
 B:With post.B Key Nature
- Type: S-With positioning column
- Material:LP-LCP UL94V-0
- Plating:SN-Tin Plated
 V01:Gold Flash



PCB Layout

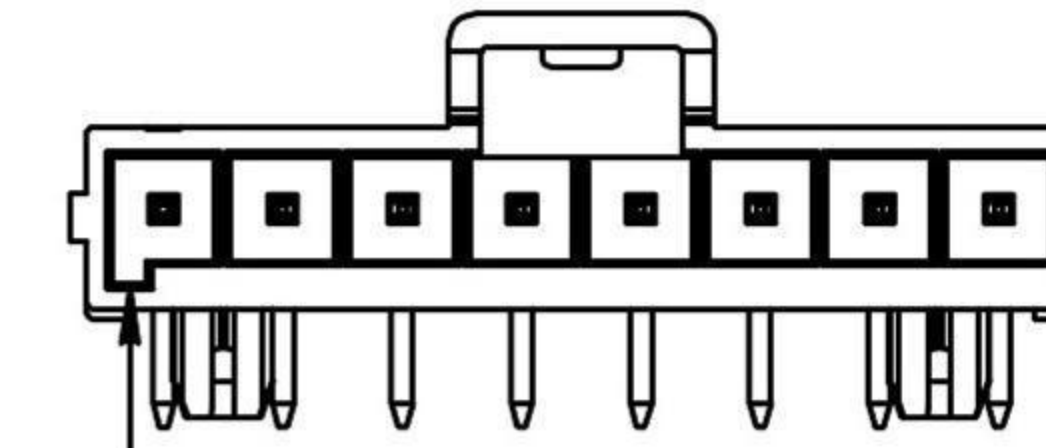
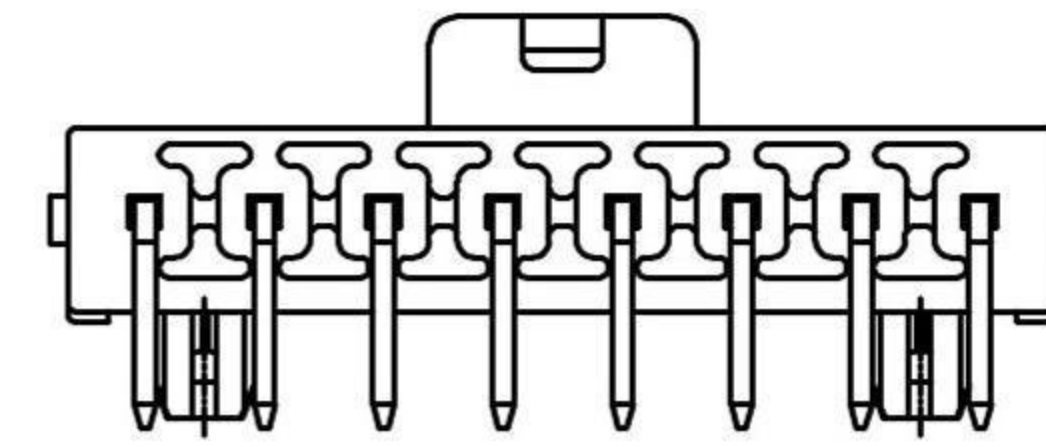
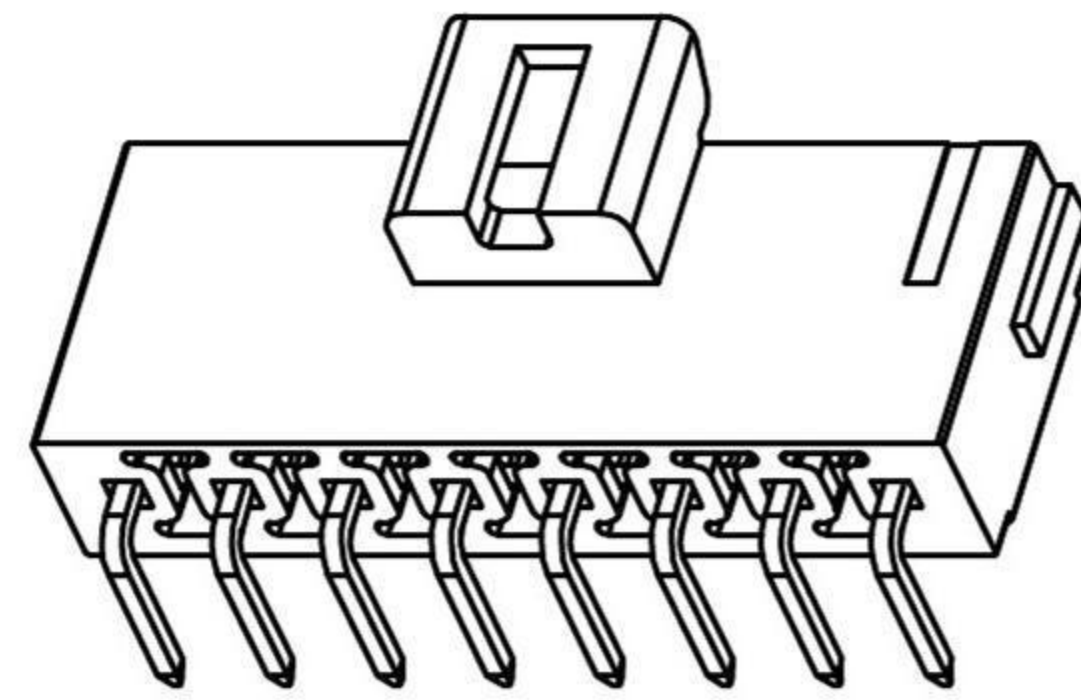
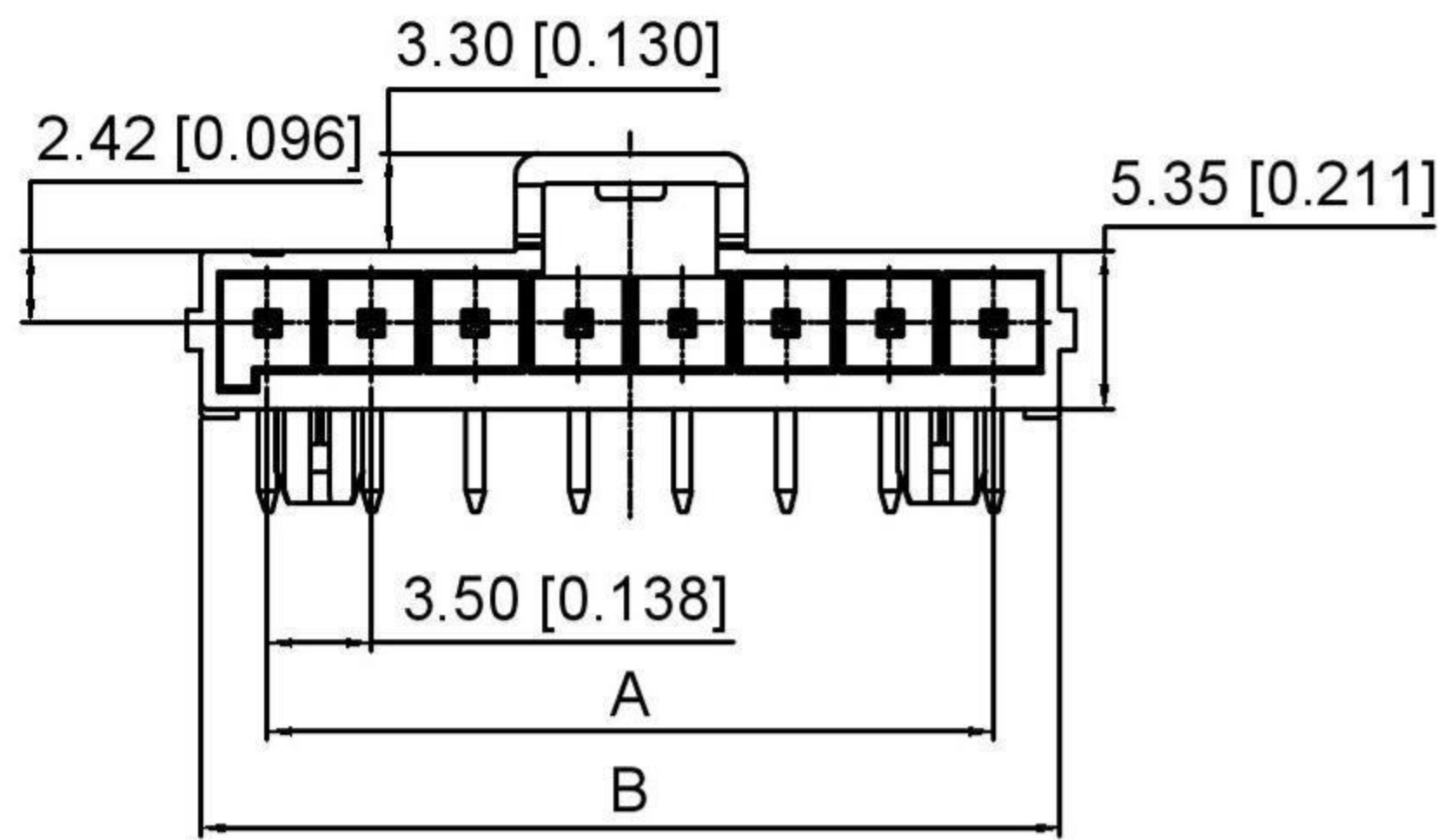


Poles	Dimensions	
	A	B
02	3.50	8.00
03	7.00	11.50
04	10.50	15.00
05	14.00	18.50
06	17.50	22.00
07	21.00	25.50
08	24.50	29.00
12	38.50	43.00

First Circuit mark
 (not showing on 4 and 6
 Circuits series)

X3501WW-XXXS-LPSN	LCP	Copper Alloy	WW-XXAS	X3501H-A / X3501H-A0
			WW-XXBS	X3501H-B / X3501H-B0
PART NO	Material	Material(Pin)	Category	Suitable Housing

REVISIONS				ANGULAR	±5°		DSND	SCALE: N/A	MODEL TYPE: BOARD TO BOARD CONNECTOR
				L ≤ 4	±0.2		DWN	VIEW:	PART NO.:
				4 < L ≤ 16	±0.3		CHKD	UNIT: mm/in	DWG NO.:
				16 < L ≤ 63	±0.4		APPD	SIZE: A4	
				L > 63	±0.5				
DATE REVISED APPROVED				UNSPECIFIED TOLERANCES		DONG GUAN XI BANG ELECTRONIC CO., LTD			WEIGHT SHEET REVISION
www.alpsr.com www.gdxjdz.com www.xbswitch.com									1/1 A0



A KEY

Specifications:

规格:

Voltage rating:400V AC/DC

额定电压: 400V AC/DC

Current rating:14A AC/DC

额定电流: 14A AC/DC

Withstanding voltage:1800V AC/minute

耐受电压: 1800V AC/分钟

Temperature range:-40°C-+105°C

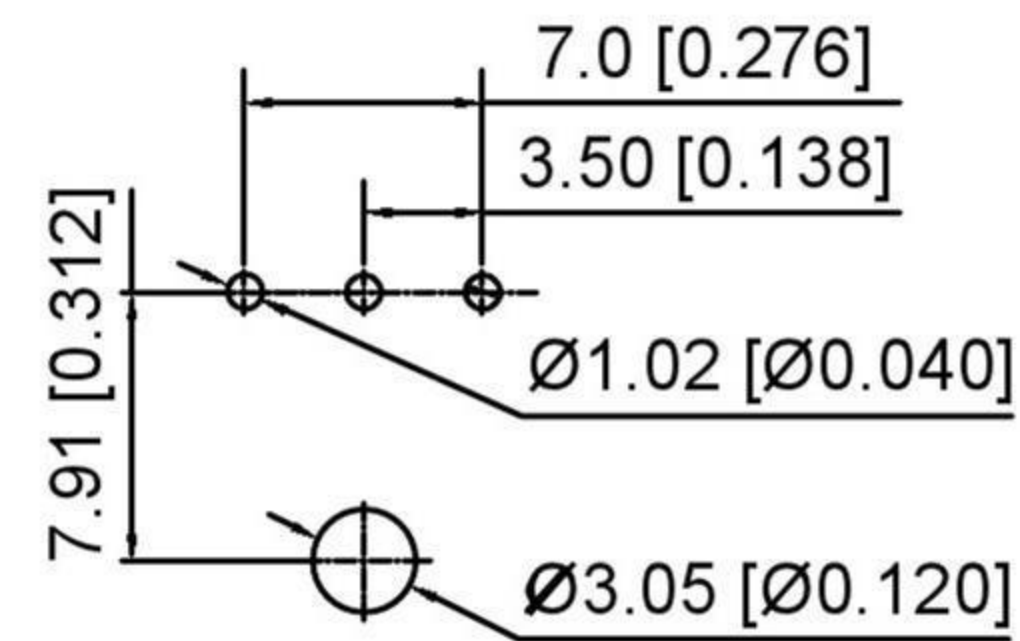
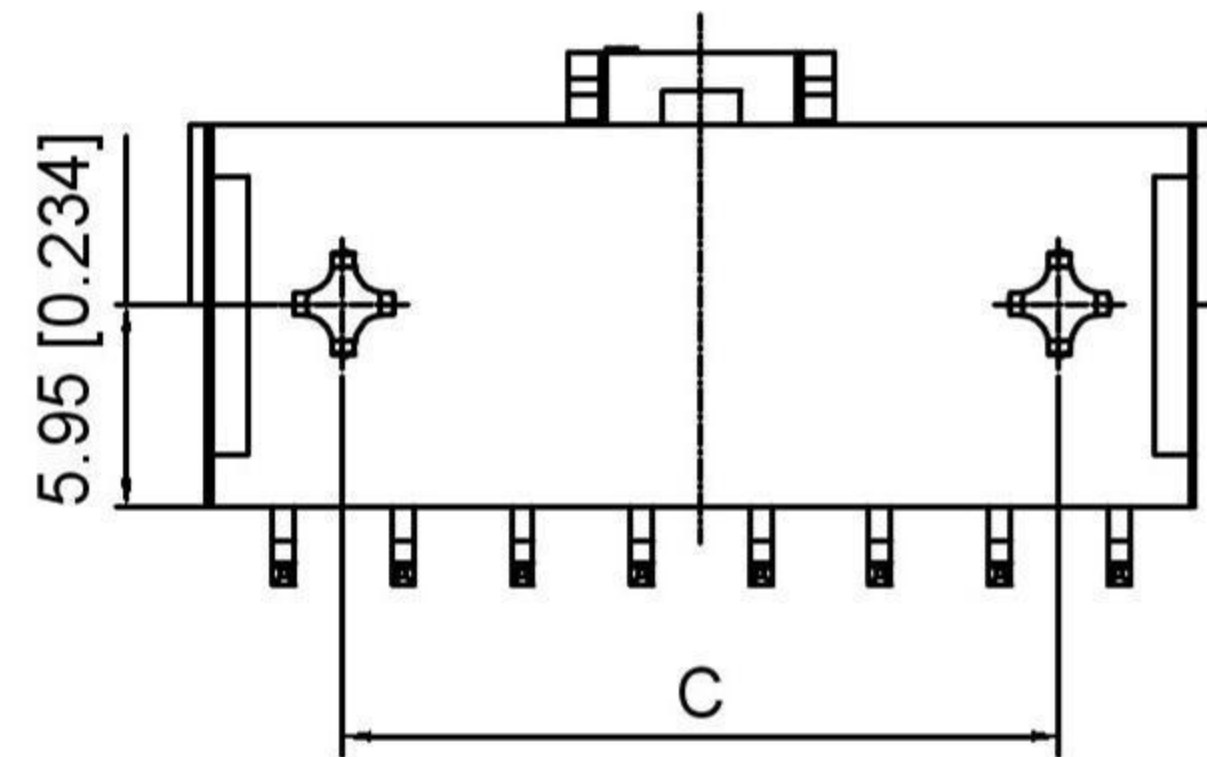
温度范围: -40°C-+105°C

Insulation resistance:1000MΩ min

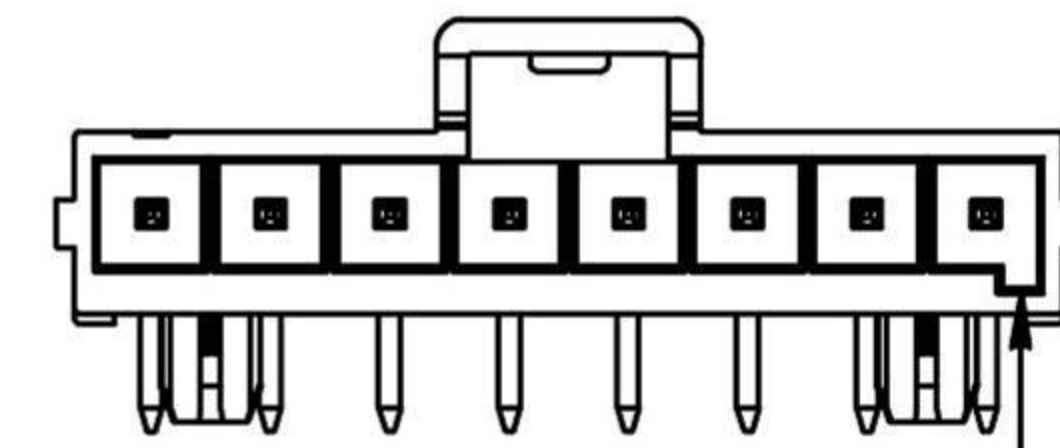
绝缘电阻: 1000MΩ Min

Contact resistance:15mΩ Max

接触电阻: 15mΩ Max



PCB Layout(2~3Pin)



B KEY

X3501 W R - XX X -LP SN

① ② ③ ④ ⑤ ⑥ ⑦

1.Series No

2.Category:W-Wafer

3.Welding Board Angle:R-Stright 90°

4.Row No.Pin No:XX-02~12P

5.Category:

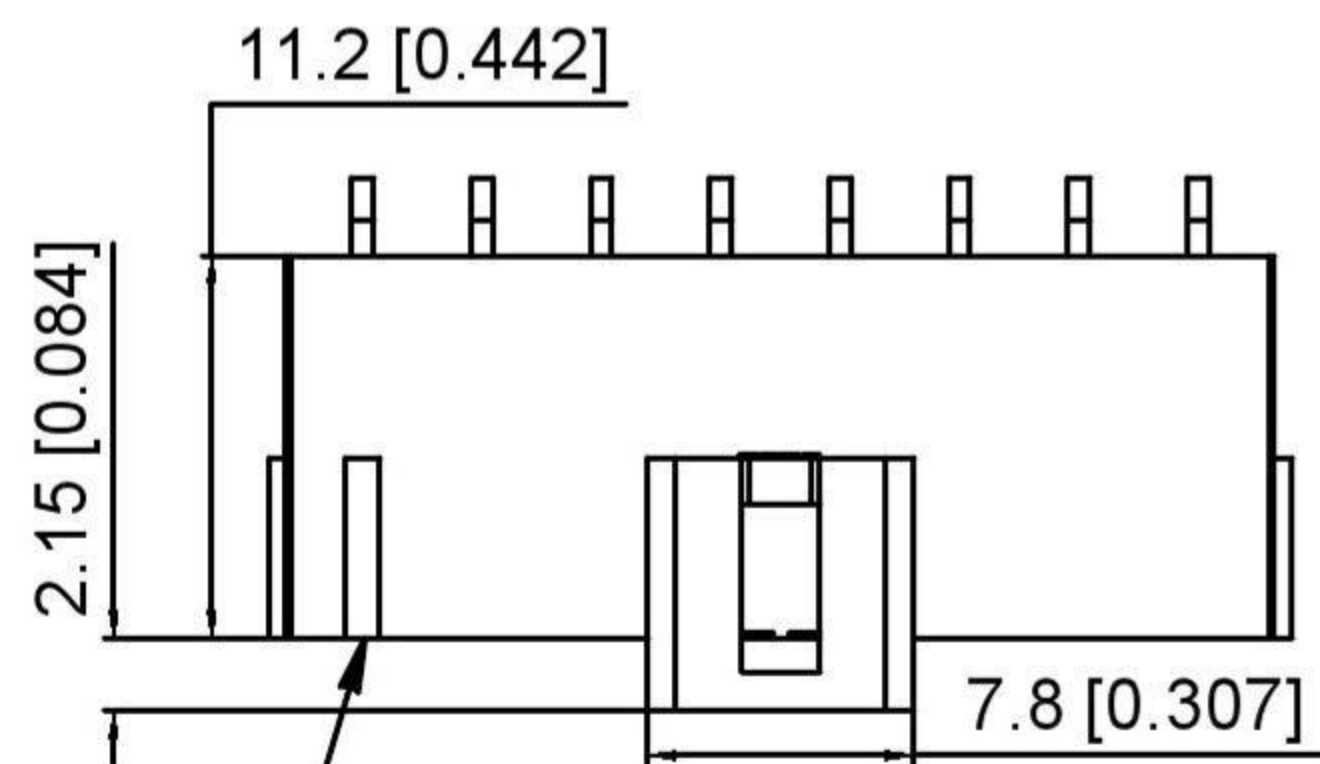
A:With post.A Key Black

B:With post.B Key Nature

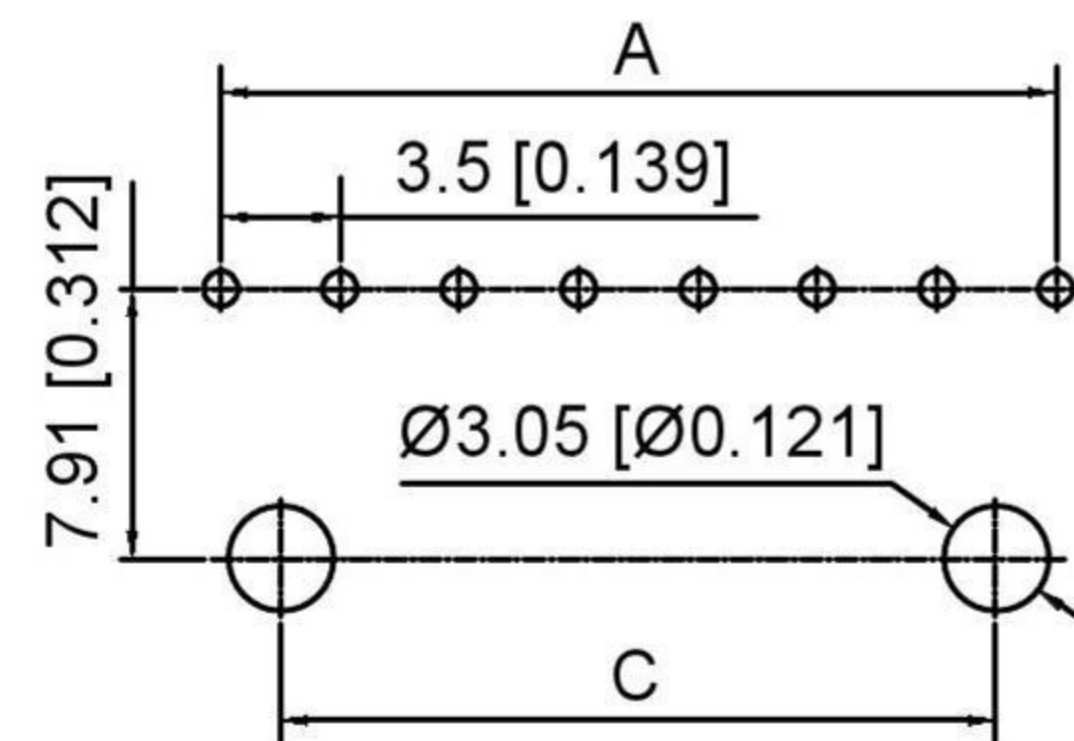
6.Material:LP-LCP UL94V-0

7.Plating:SN-Tin Plated

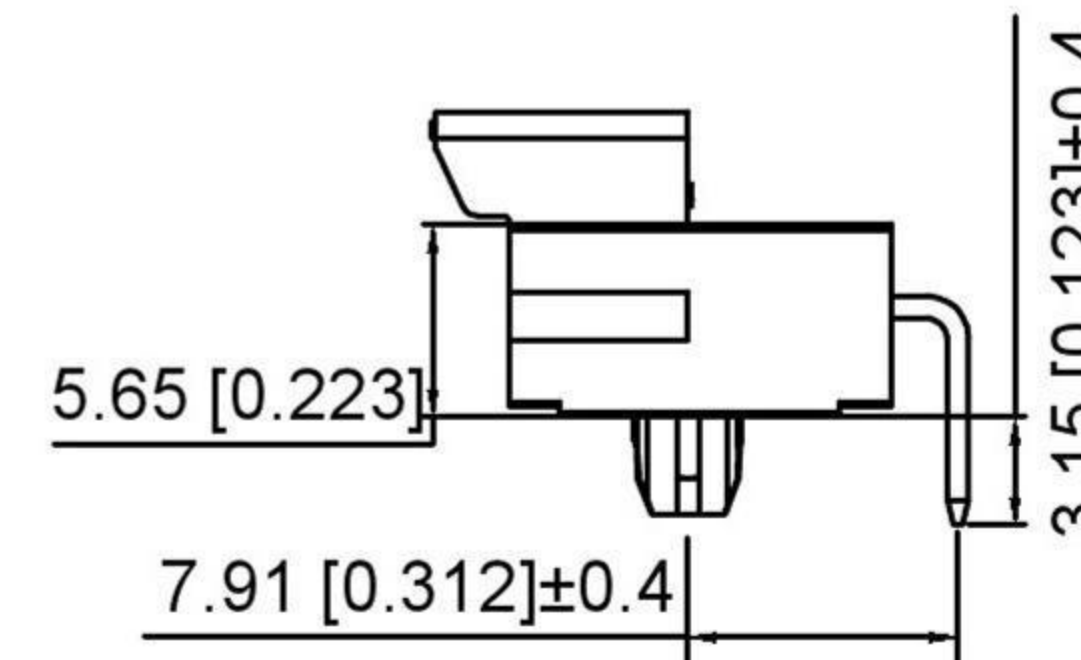
V01-Gold Flash



First Circuit mark
(not showing on 4 and 6
Circuits series)



PCB Layout(4~12Pin)

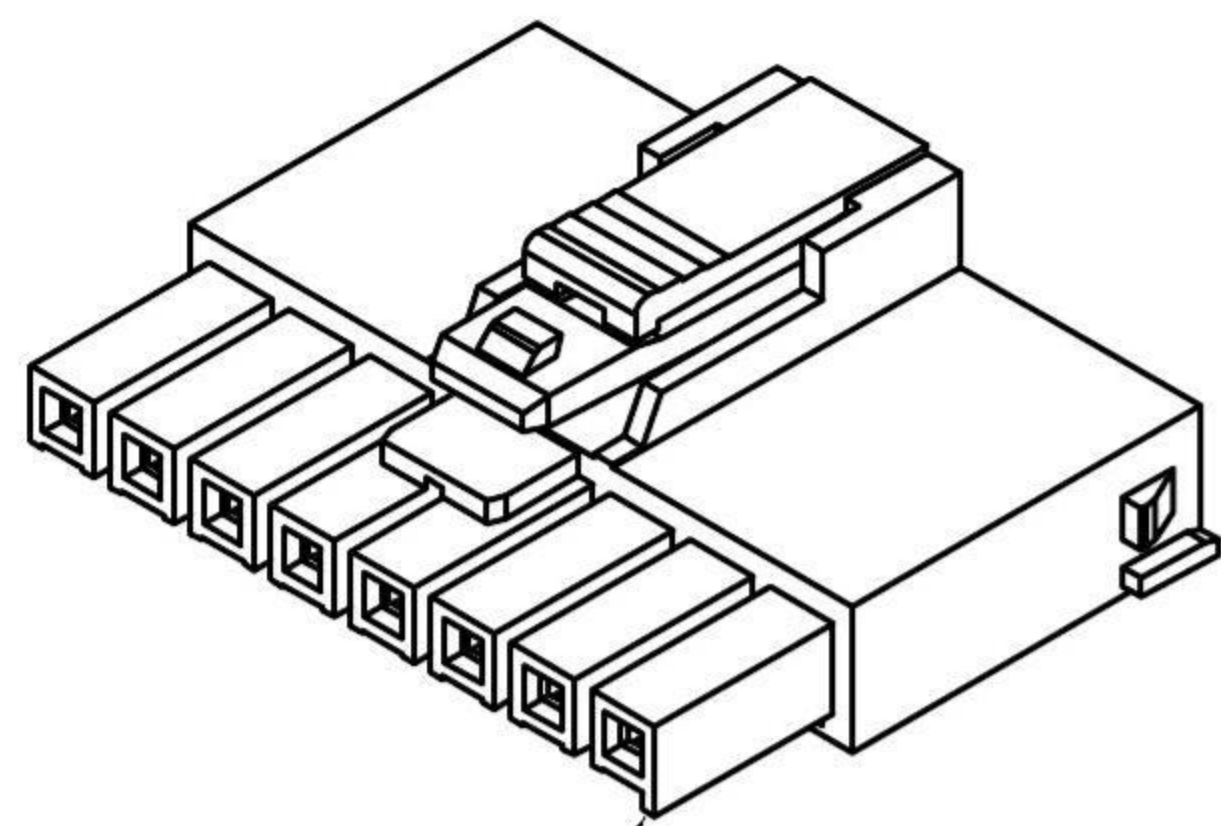


Poles	Dimensions		
	A	B	C
02	3.50	8.00	/
03	7.00	11.50	/
04	10.50	15.00	7.00
05	14.00	18.50	10.50
06	17.50	22.00	14.00
07	21.00	25.50	17.50
08	24.50	29.00	21.00
12	38.00	43.00	35.00

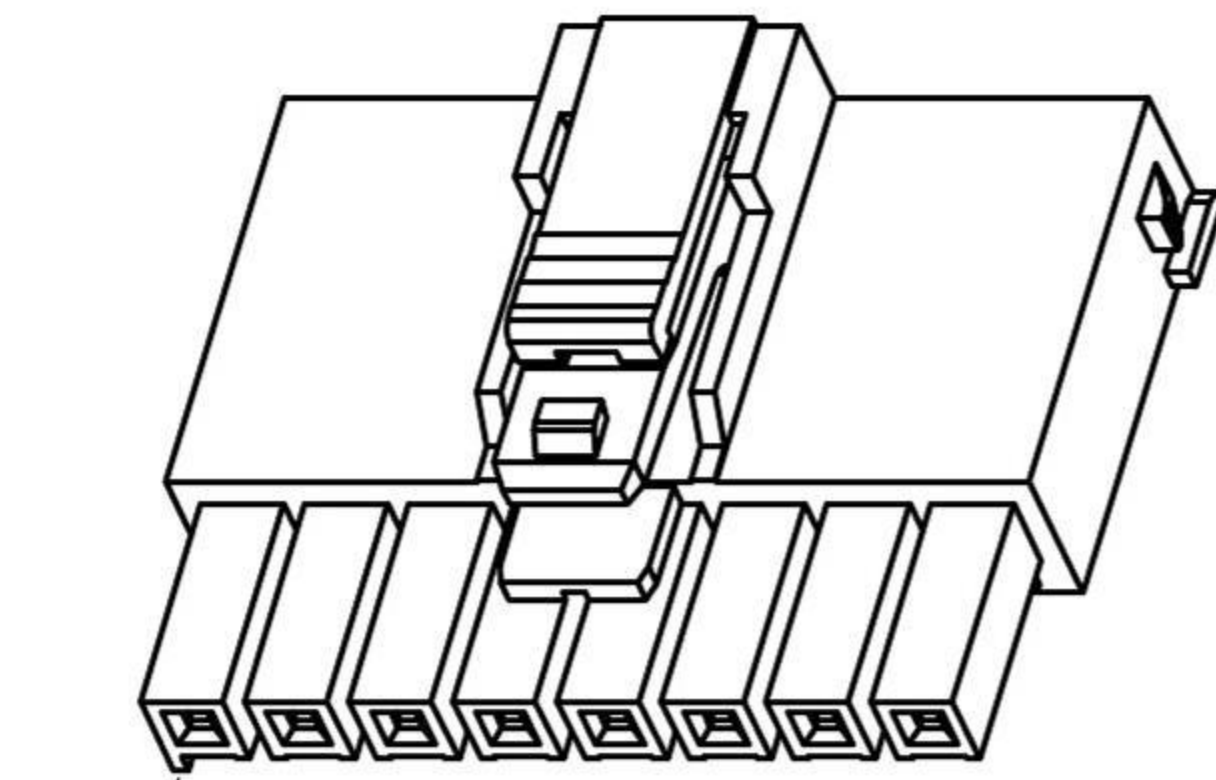
X3501WR-XXX-LPSN	LCP	Copper Alloy	WR-XXA	X3501H-XXA / X3501H-XXA0
			WR-XXB	X3501H-XXB / X3501H-XXB0
PART NO	Material	Material(Pin)	Category	Suitable Housing

REVISIONS	DATE	REVISED	APPROVED	UNSPECIFIED TOLERANCES	DSND	SCALE: N/A	MODEL TYPE: BOARD TO BOARD CONNECTOR		
					DWN	VIEW:	PART NO.:		
					CHKD	UNIT: mm/in	DWG NO.:		
					APPD	SIZE: A4			
www.alpsr.com www.gdxjdz.com www.xbswitch.com					DONG GUAN XI BANG ELECTRONIC CO., LTD		WEIGHT	SHEET	REVISION
								1/1	A0

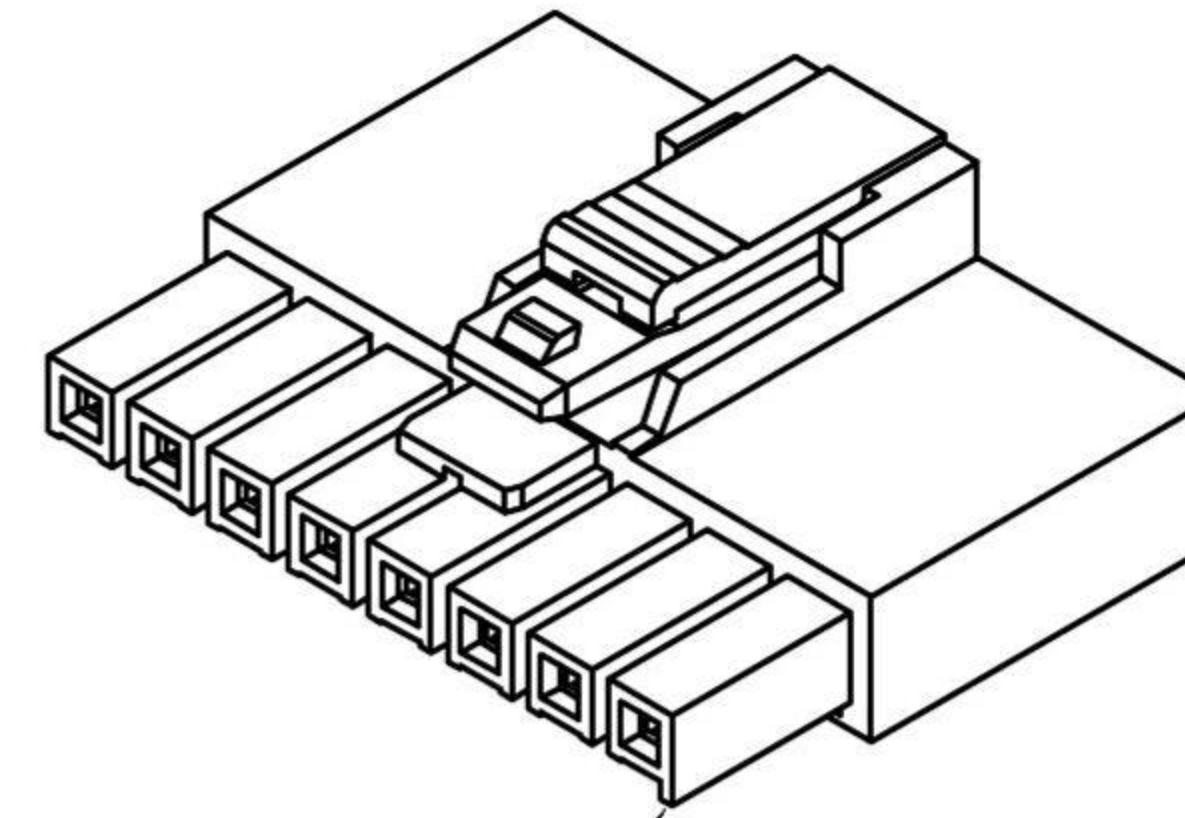




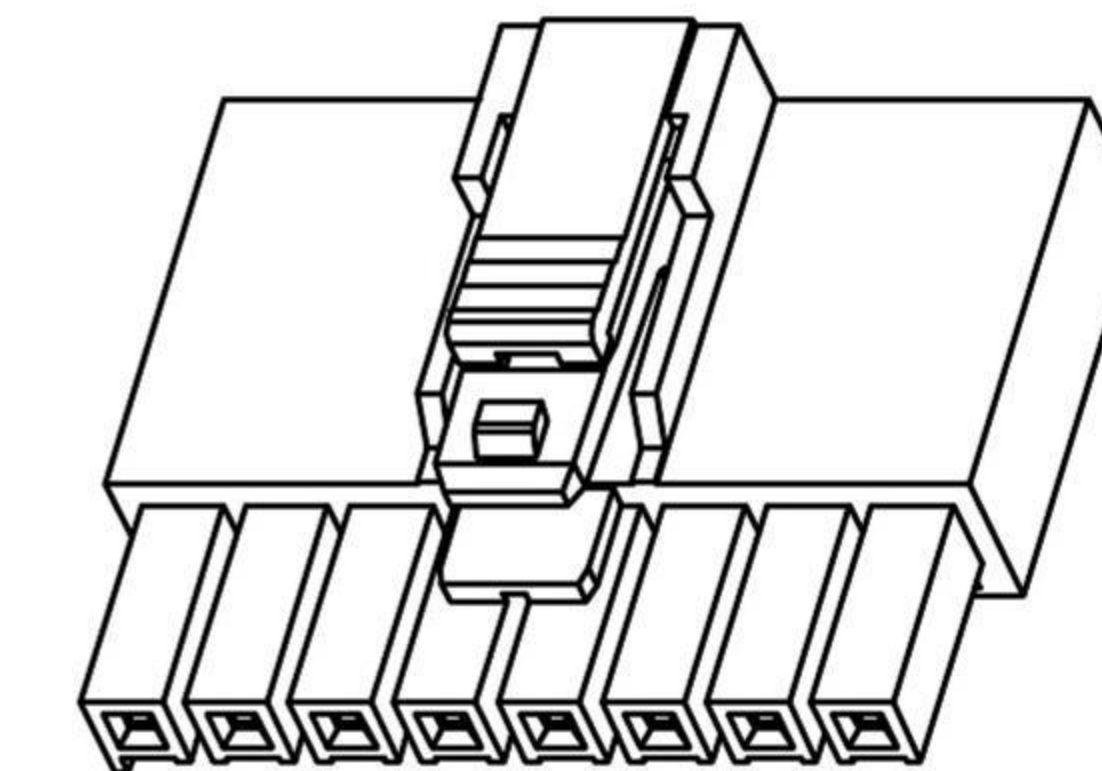
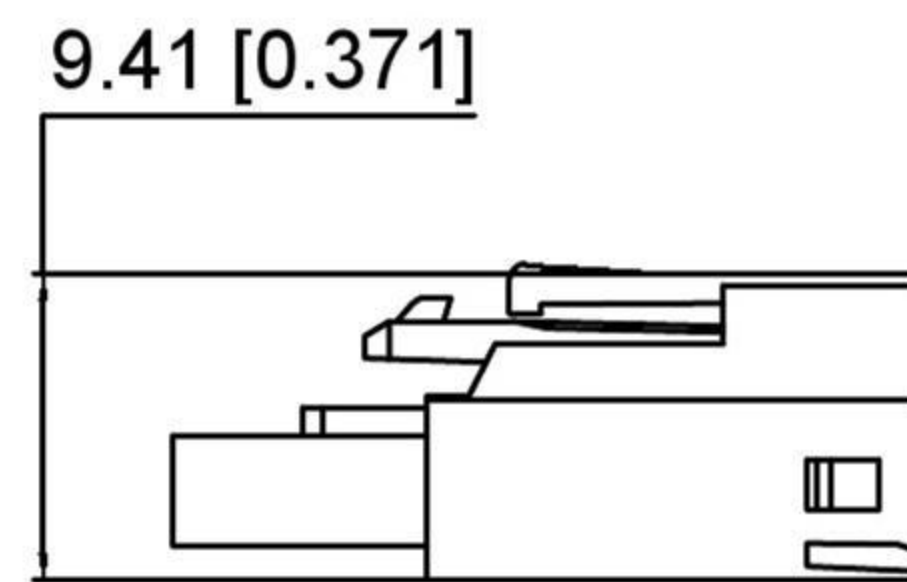
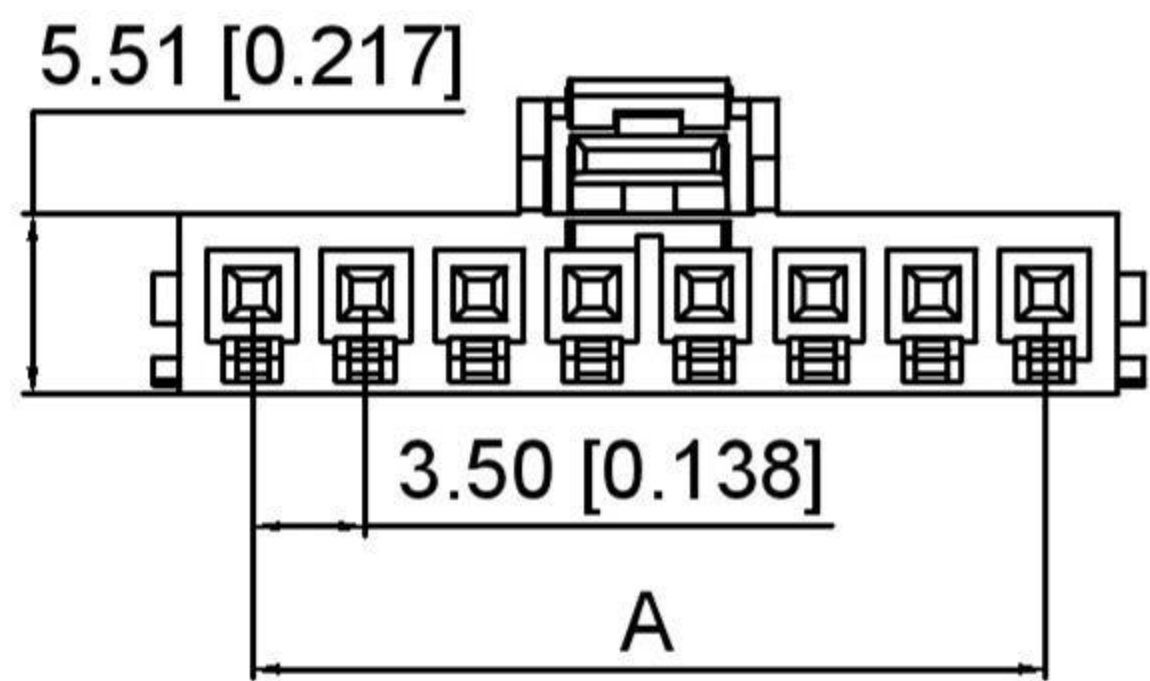
TPA Type, A KEY



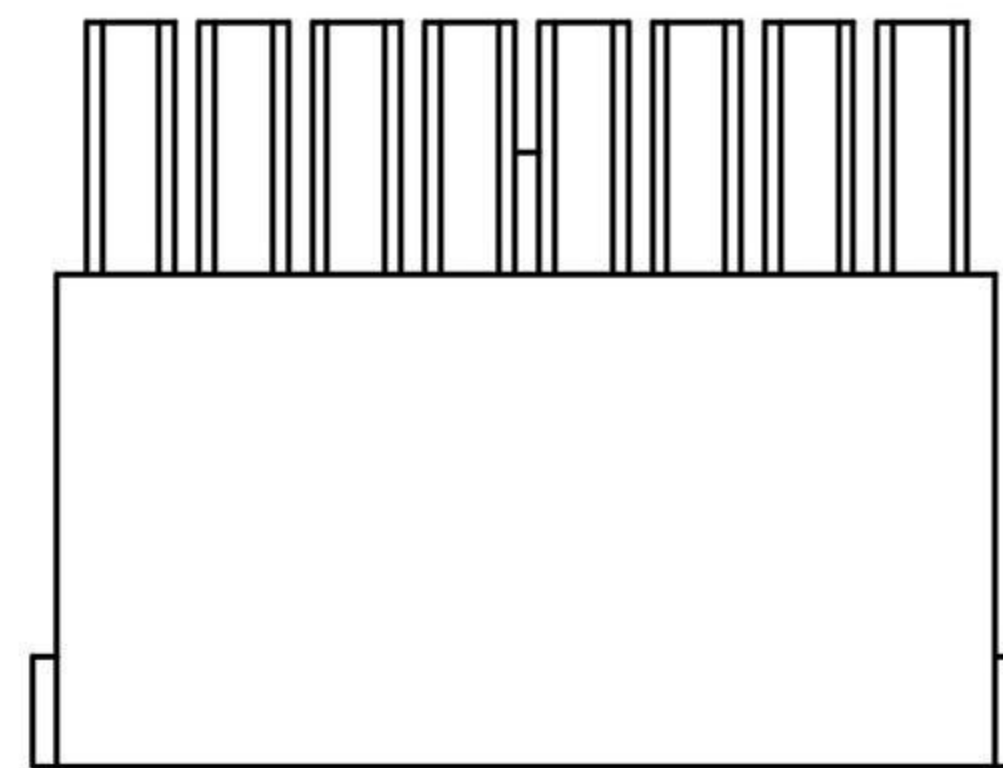
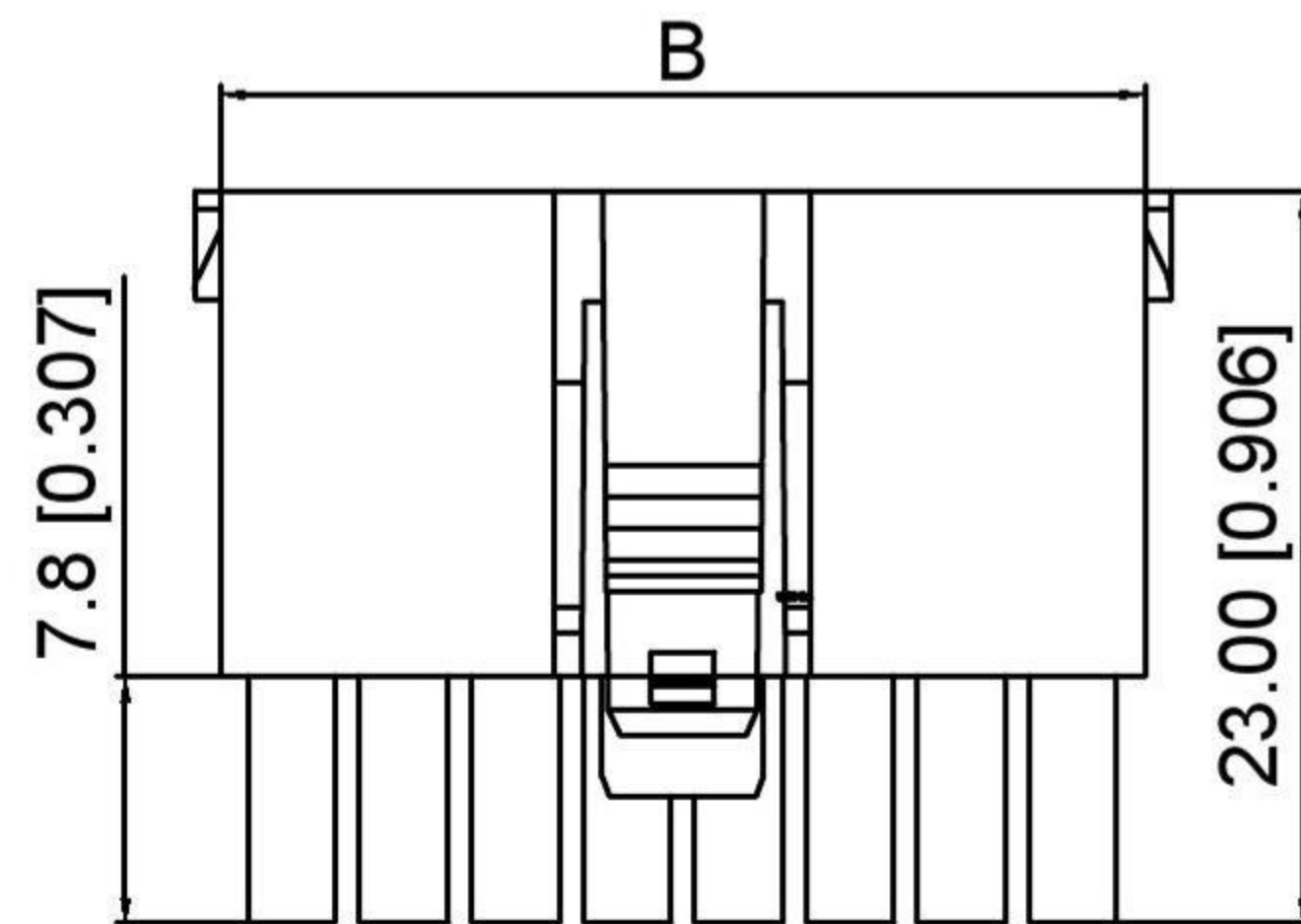
TPA Type, B KEY



Standard, A KEY



Standard, B KEY



Specifications:

规格:

Voltage rating:400V AC/DC

额定电压: 400V AC/DC

Current rating:14A AC/DC

额定电流: 14A AC/DC

Withstanding voltage:1800V AC/minute

耐受电压: 1800V AC/分钟

Temperature range:-40°C-+105°C

温度范围: -40°C-+105°C

Insulation resistance:1000MΩ min

绝缘电阻: 1000MΩ Min

Contact resistance:10mΩ Max

接触电阻: 10mΩ Max

X3501 H - XX X - N0

① ② ③ ④ ⑤

1.Series No

2.Category:H-HSG

3.Row No.Pin No:XX-02~12P

4.Category:

A:TPA Type, A KEY Black

B:TPA Type, B KEY Nature

A0:Standard, A KEY Black

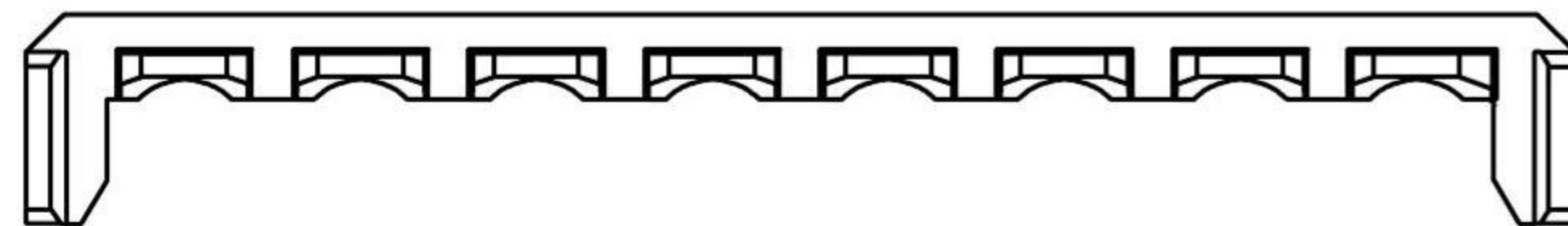
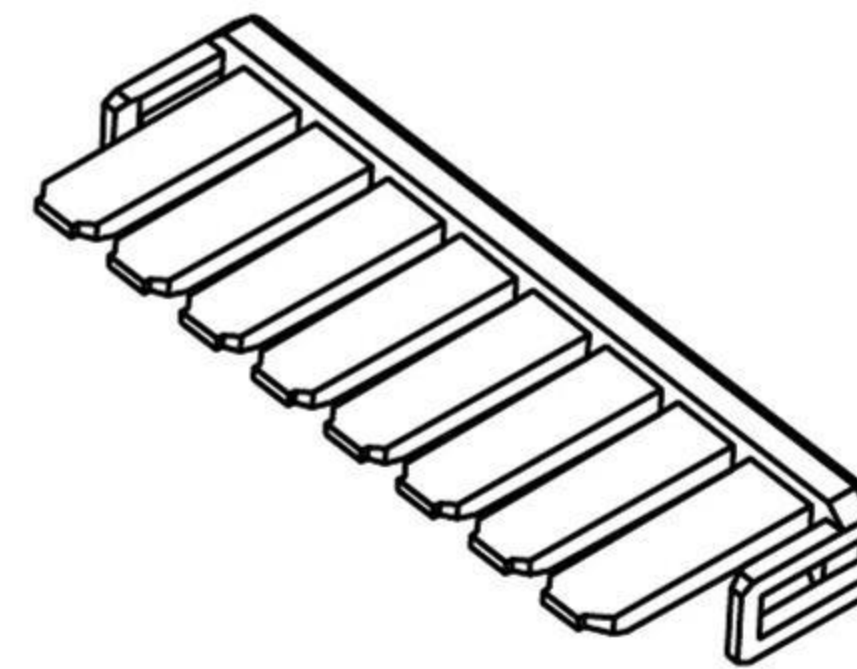
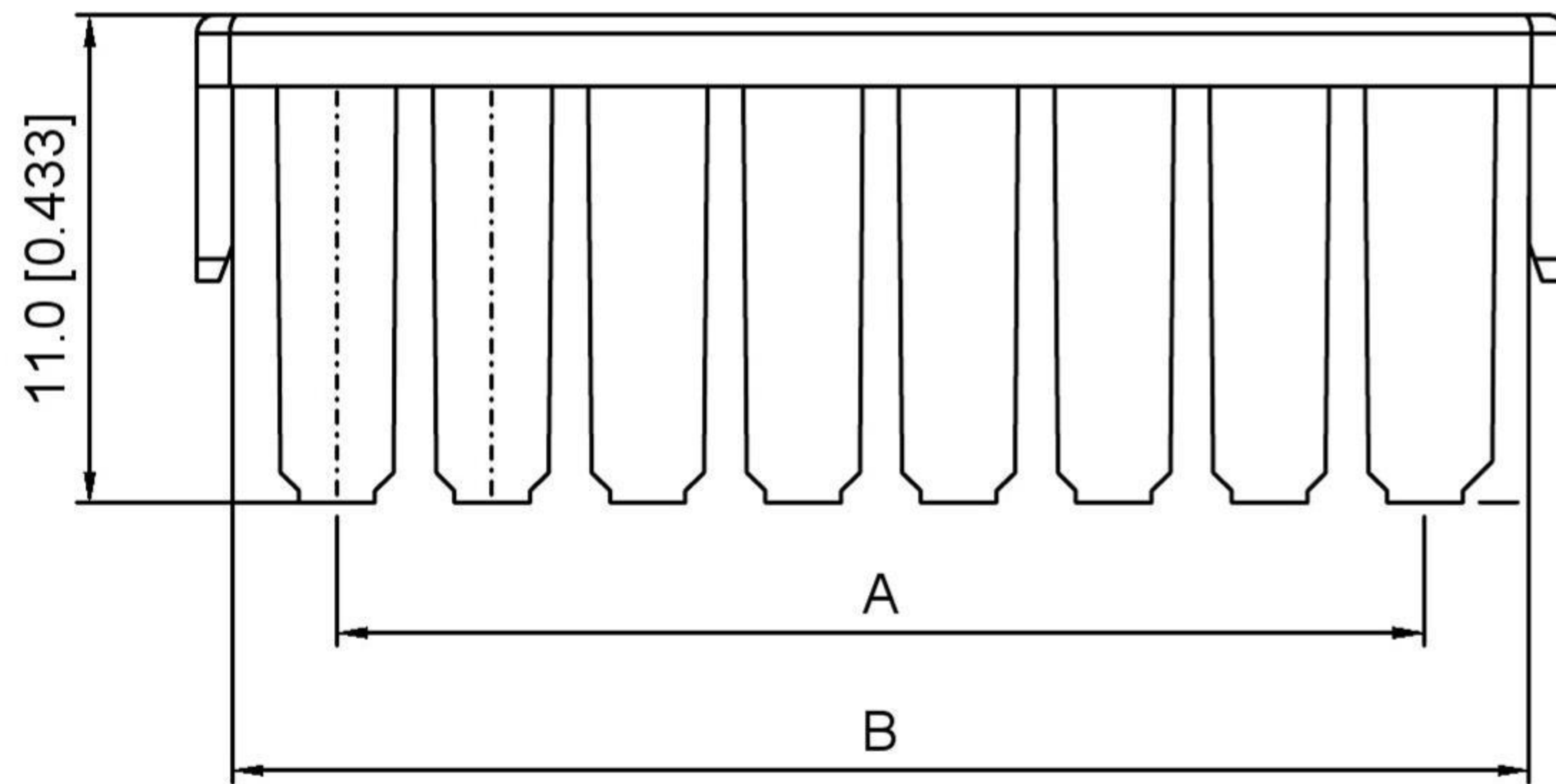
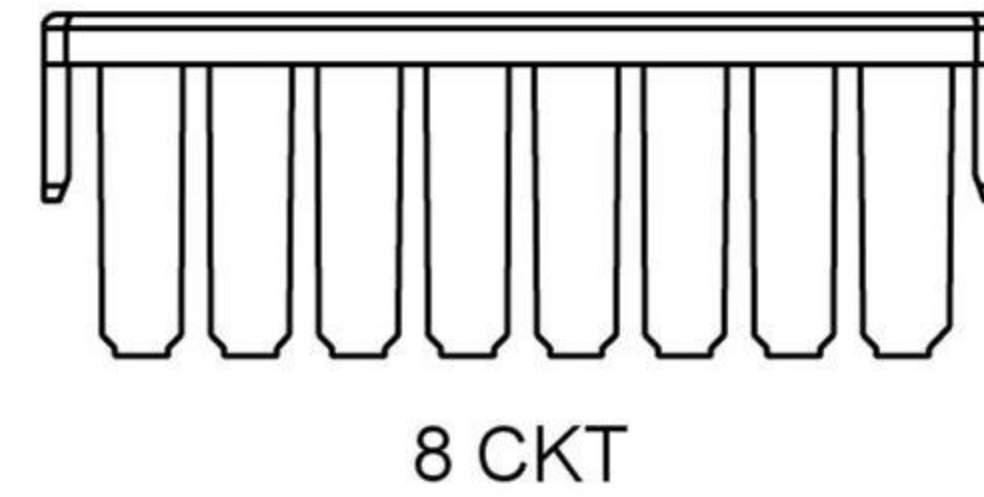
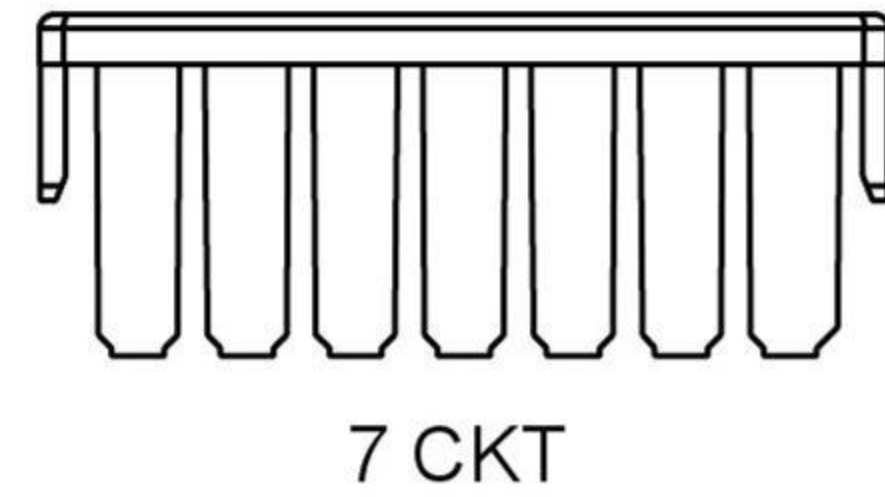
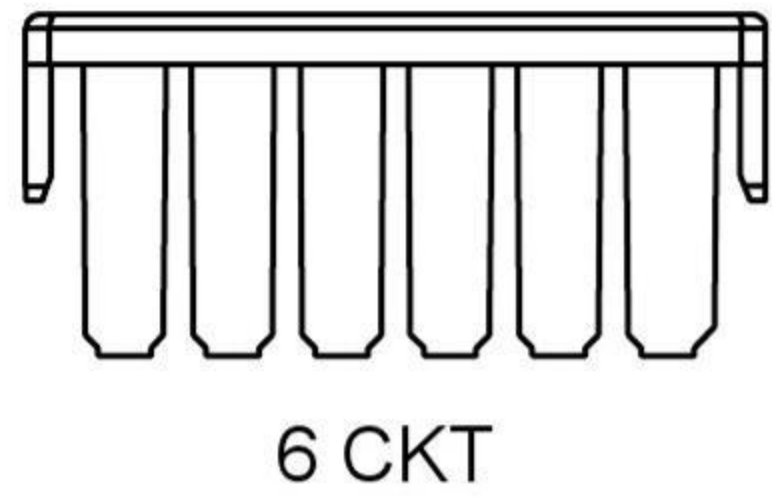
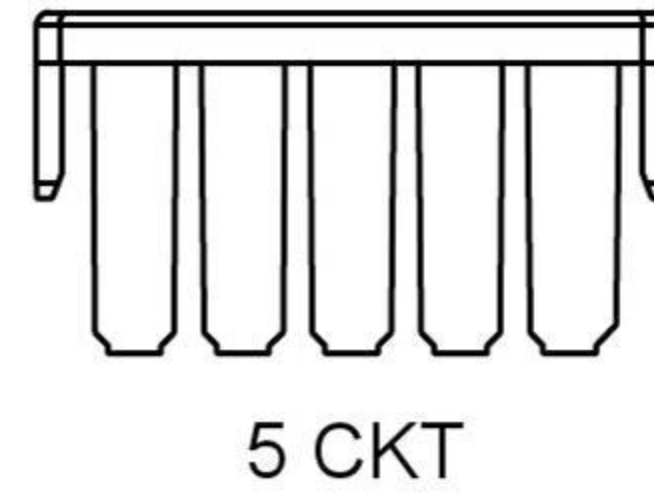
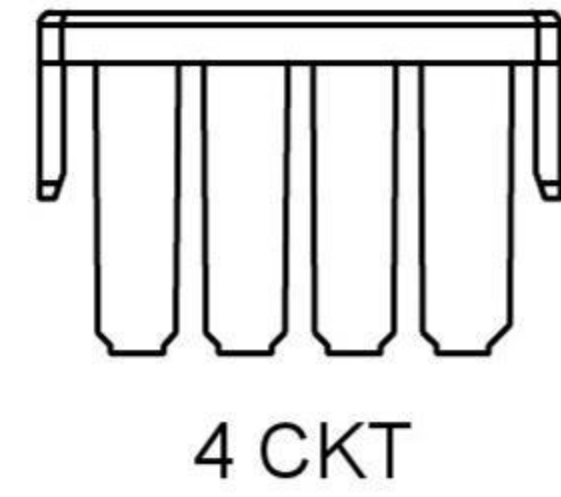
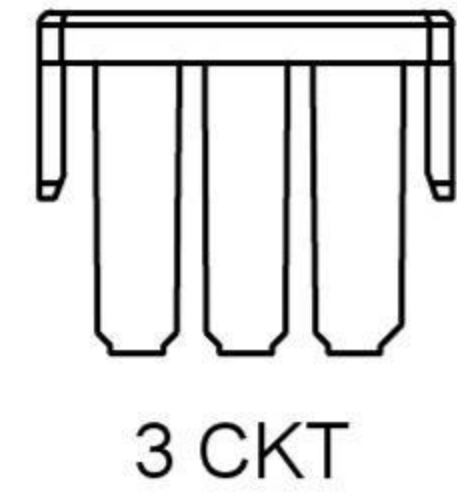
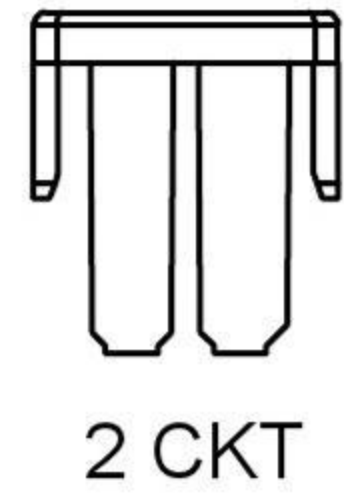
B0:Standard, B KEY Nature

5.Material:N0-Nylon UL94V-0

Poles	Dimensions	
	A	B
02	3.50	8.00
03	7.00	11.50
04	10.50	15.00
05	14.00	18.50
06	17.50	22.00
07	21.00	25.50
08	24.50	29.00
12	38.50	43.00

X3501H-XXX-N0	Nylon	H-XXA / H-XXA0	X3501W-A	X3501T	X3501HL
		H-XXB / H-XXB0	X3501W-B		
PART NO	Material	Category	Suitable Wafer	Suitable Terminal	Category

REVISIONS				ANGULAR	±5°		DSND	SCALE: N/A	MODEL TYPE: BOARD TO BOARD CONNECTOR		
DATE				L ≤ 4	±0.2		DWN	VIEW:	PART NO.:		
REVISED				4 < L ≤ 16	±0.3		CHKD	UNIT: mm/in	DWG NO.:		
APPROVED				16 < L ≤ 63	±0.4		APPD	SIZE: A4	WEIGHT		
UNSPECIFIED TOLERANCES				L > 63	±0.5		DONG GUAN XI BANG ELECTRONIC CO., LTD			SHEET	REVISION
www.alpsr.com www.gdxjdz.com www.xbswitch.com							1/1			A0	



Specifications:

规格:

Voltage rating:400V AC/DC

额定电压: 400V AC/DC

Current rating:14A AC/DC

额定电流: 14A AC/DC

Withstanding voltage:1800V AC/minute

耐受电压: 1800V AC/分钟

Temperature range:-40℃-+105℃

温度范围: -40℃-+105℃

Insulation resistance:1000MΩ min

绝缘电阻: 1000MΩ Min

Contact resistance:15mΩ Max

接触电阻: 15mΩ Max

X3501 HL - XX - N0 X
 ① ② ③ ④ ⑤ ⑥

1.Series No

2.Category:HL-Matching rubber shell row line lock

3.Row No.Pin No:XX-02~08P

4.Material:N0-Nylon66 UL94V-0

5.Color:BK-Black ; N-Natural

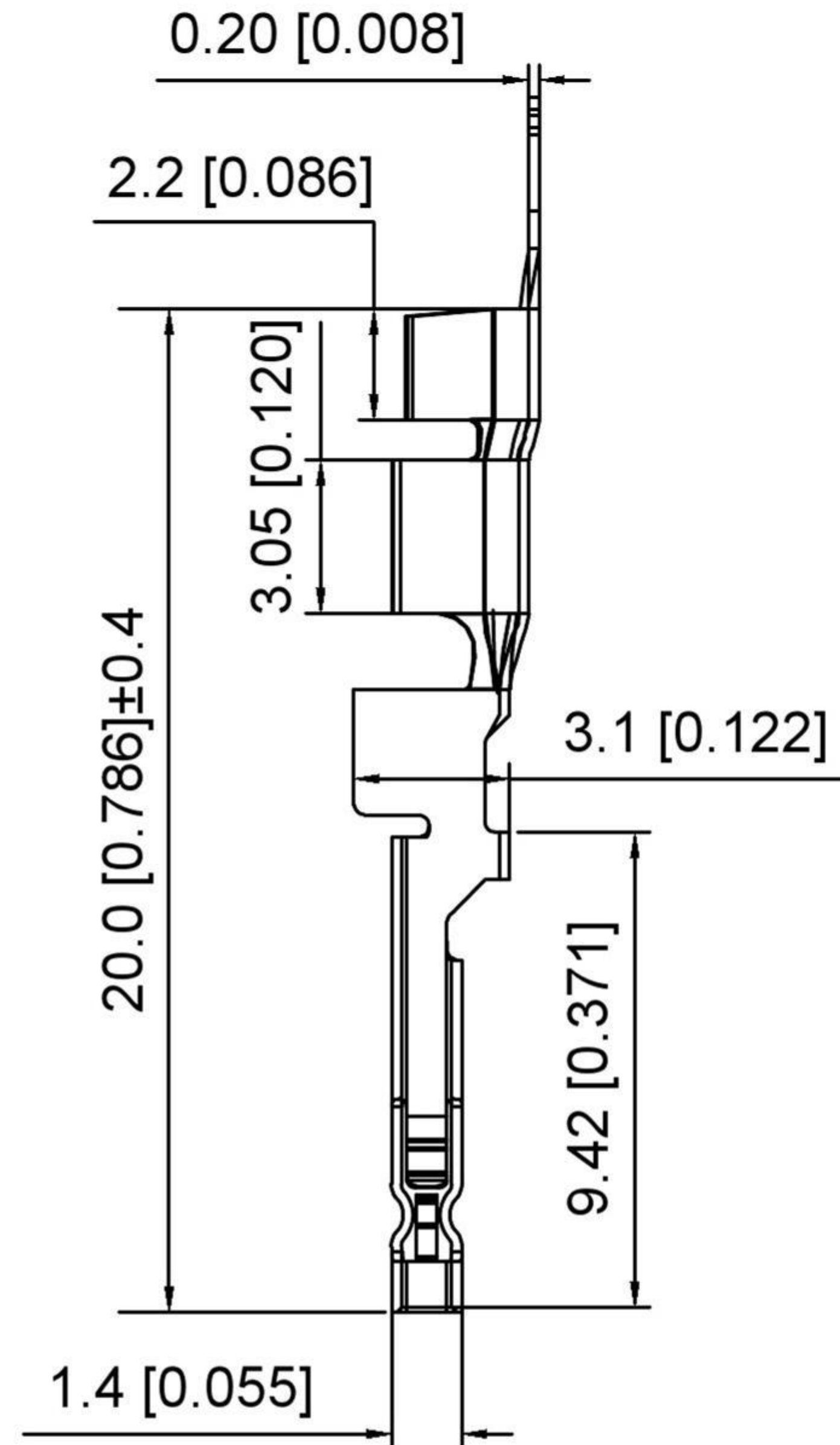
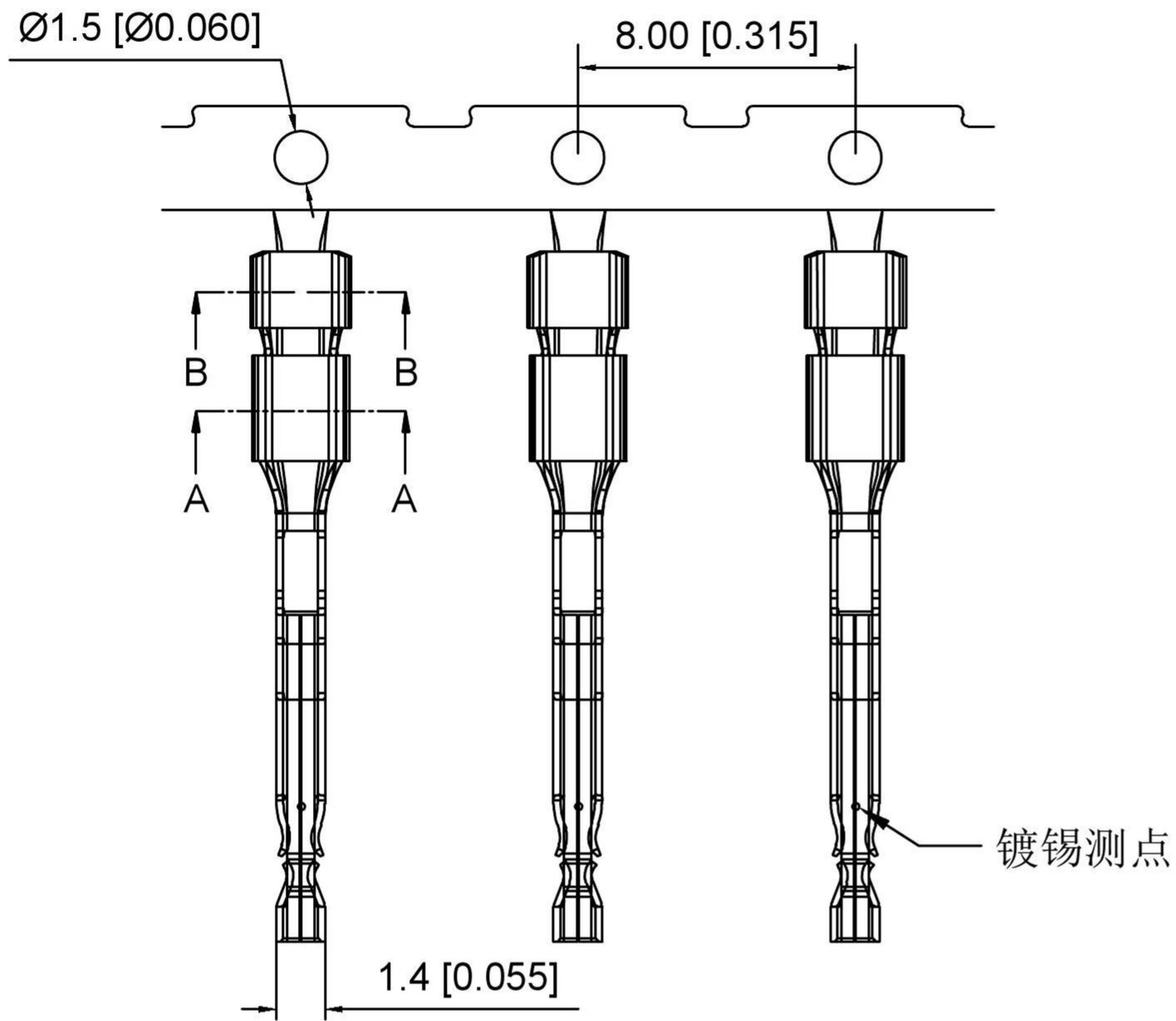
Poles	Dimensions(mm)	
	A	B
02	3.50	8.20
03	7.00	11.70
04	10.50	15.20
05	14.00	18.70
06	17.50	22.20
07	21.00	25.70
08	24.50	29.20

X3501HL-XX-N0BK	Black	Nylon66	X3501H-XXA / X3501H-XXB	
X3501HL-XX-N0N	Natural		X3501H-2xXXA / X3501H-2xXXB	
PART NO	Material	Material	Suitable	Housing

REVISIONS				ANGULAR	±5°
				L ≤ 4	±0.2
				4 < L ≤ 16	±0.3
				16 < L ≤ 63	±0.4
				L > 63	±0.5
	DATE	REVISED	APPROVED	UNSPECIFIED TOLERANCES	



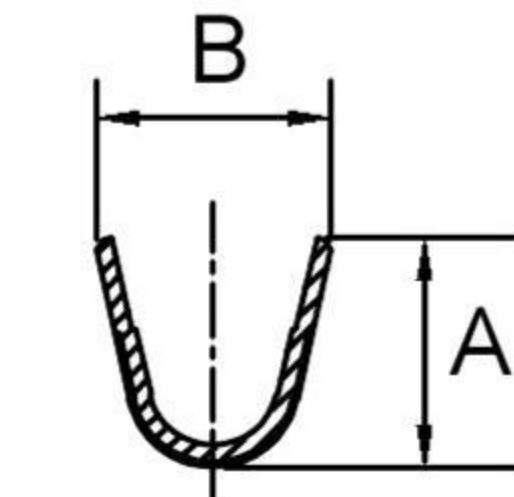
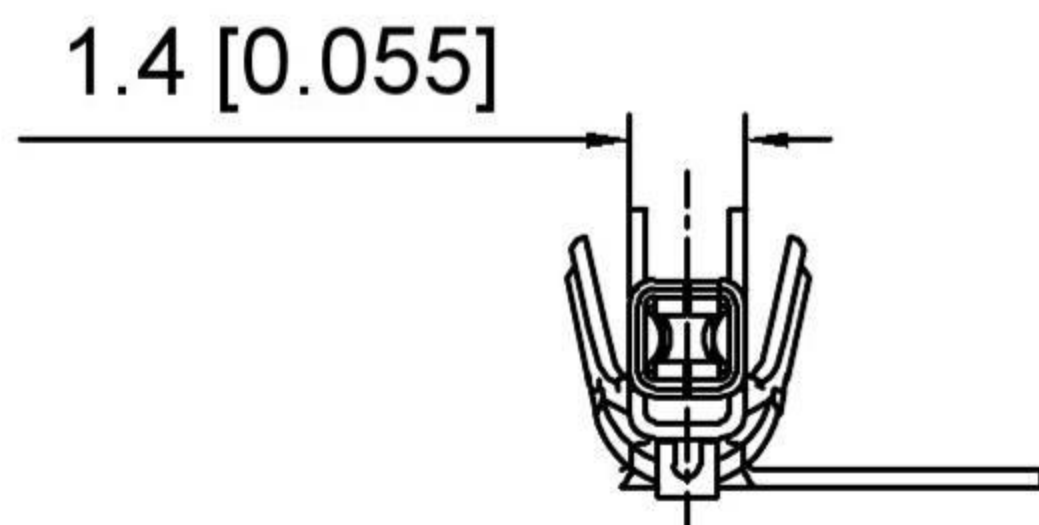
DSND		SCALE: N/A	MODEL TYPE: BOARD TO BOARD CONNECTOR		
DWN		VIEW:	PART NO.:		
CHKD		UNIT: mm/in	DWG NO.:		
APPD		SIZE: A4	WEIGHT	SHEET	REVISION
DONG GUAN XI BANG ELECTRONIC CO., LTD				1/1	A0



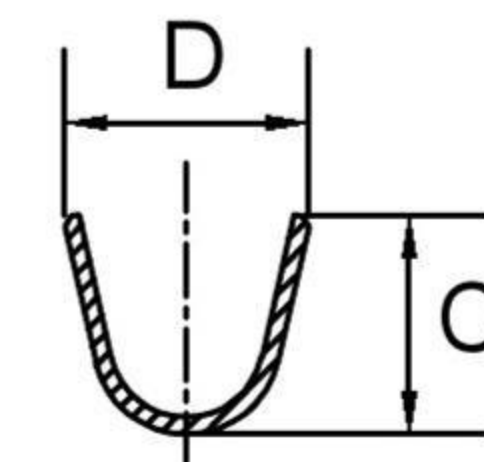
Specifications:
 规格:
Voltage rating:400V AC/DC
 额定电压: 400V AC/DC
Current rating:14A AC/DC
 额定电流: 14A AC/DC
Withstanding voltage:1800V AC/minute
 耐受电压: 1800V AC/分钟
Temperature range:-40℃-+105℃
 温度范围: -40℃-+105℃
Insulation resistance:1000MΩ min
 绝缘电阻: 1000MΩ Min
Contact resistance:10mΩ Max
 接触电阻: 10mΩ Max

X3501 T - TX SN - X
 ① ② ③ ④ ⑤

1. Series No
2. Category: T-Terminal
3. Category: TP-Phosphor Bronze Ter
TH-High Conductive copper alloy Ter
4. Plating: Tin Plated 80-120u"Min
5. Type: Type A ; Type B





剖面A-A



剖面B-B

X3501T-TXSN-A	AWG#20-22	2.20	2.20	2.10	2.33	X3501H
X3501T-TXSN-B	AWG#16-18	2.80	2.80	2.63	2.90	Suitable Housing
PART NO	Wire Range	DIM A	DIM B	DIM C	DIM D	

REVISIONS				ANGULAR	±5°		DSND	SCALE: N/A	MODEL TYPE: BOARD TO BOARD CONNECTOR					
				L ≤ 4	±0.2		DWN	VIEW: 	PART NO.:					
				4 < L ≤ 16	±0.3		CHKD	UNIT: mm/in	DWG NO.:					
				16 < L ≤ 63	±0.4		APPD	SIZE: A4						
DATE				REVISED	APPROVED	L > 63	UNSPECIFIED TOLERANCES			DONG GUAN XI BANG ELECTRONIC CO., LTD		WEIGHT	SHEET	REVISION
www.alpsr.com www.gdxjdz.com www.xbswitch.com												1/1	A0	