

Specifications :

- Voltage rating: 30V AC / DC
- Current rating: 0.5A AC / DC
- Withstanding voltage: 200V AC/minute
- Temperature range: -25°C~+85°C
- Insulation resistance: ≥100MΩ
- Contact resistance: ≤20mΩ
- After environmental testing: ≤40mΩ

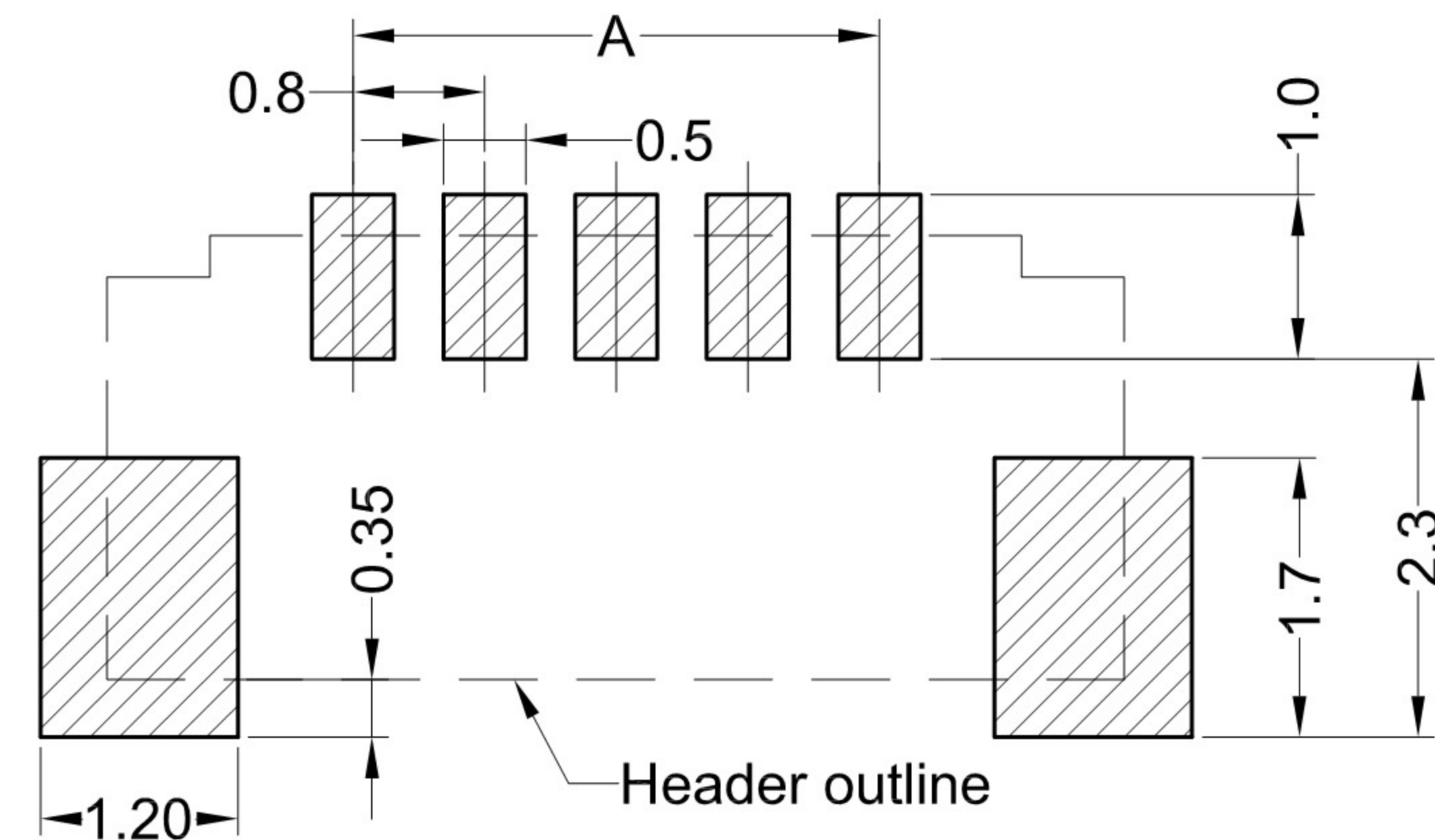
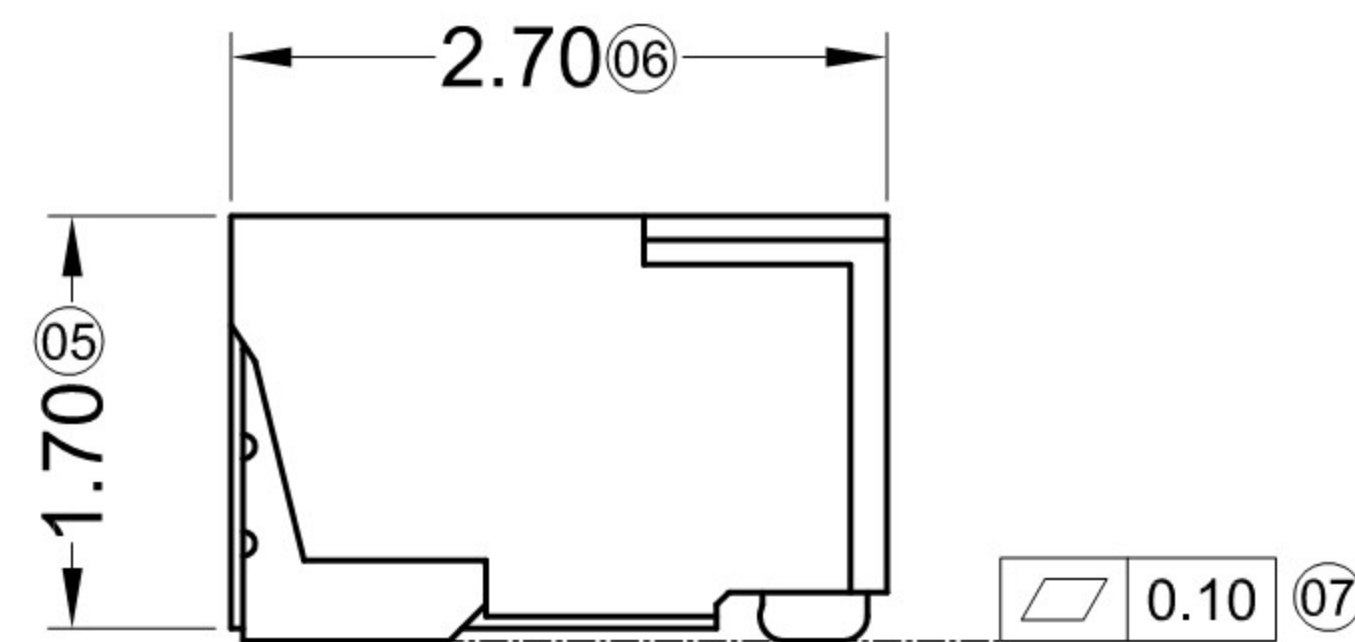
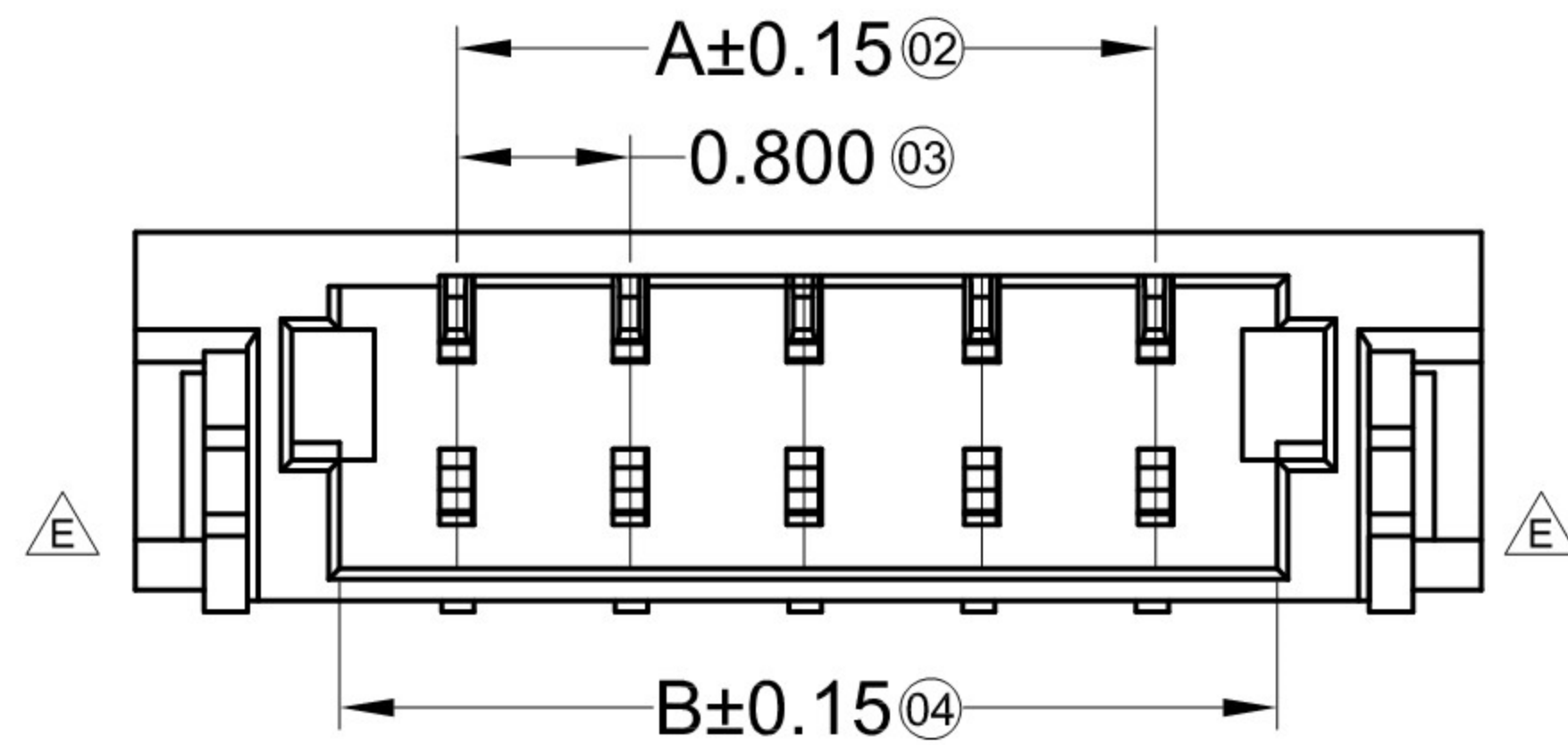
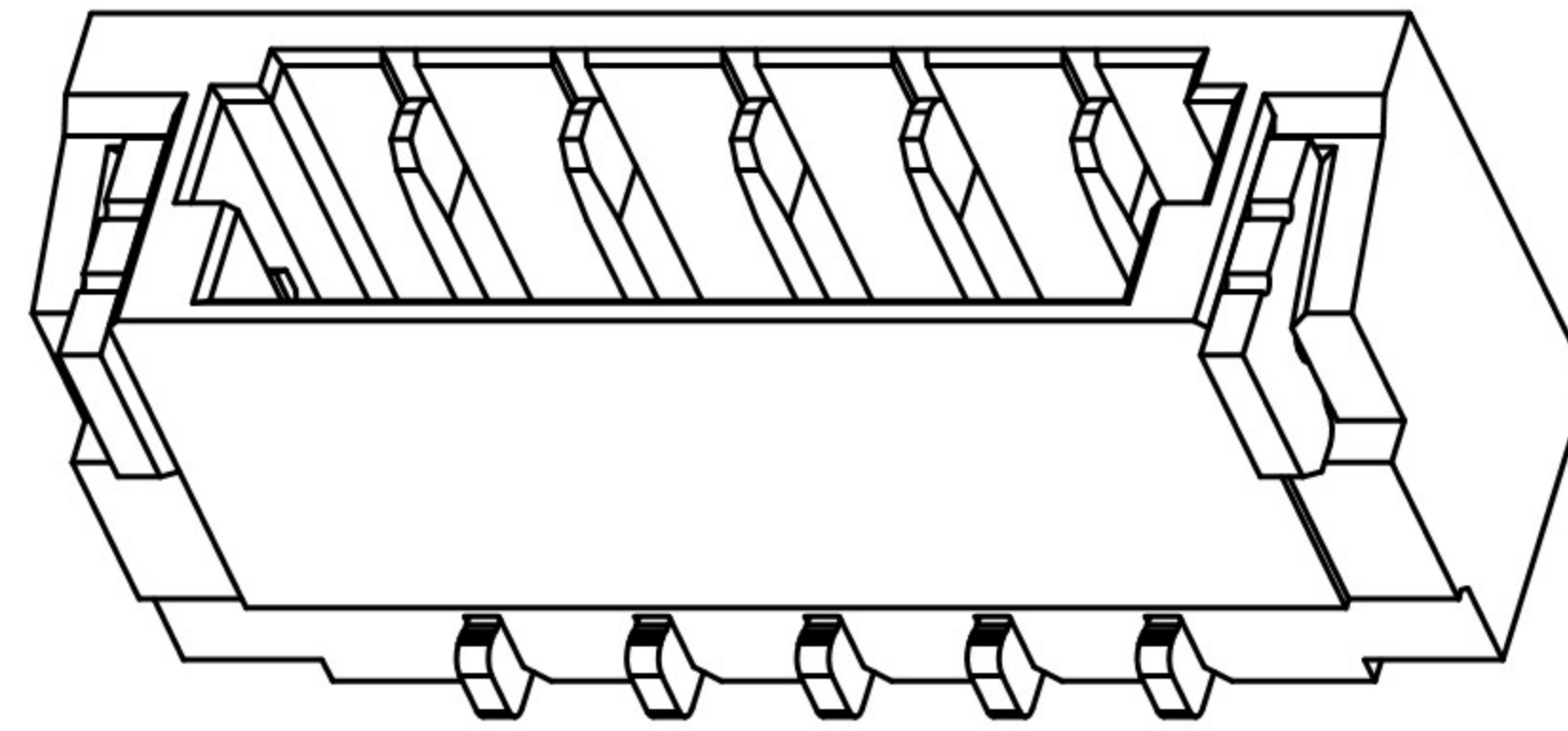
X0800WVS-XXX-LPXXXX

- ① ② ③ ④ ⑤ ⑥ ⑦ ⑧ ⑨
- ① Series No.
 - ② Category: W-wafer
 - ③ Welding Board Angle: V-180°
 - ④ Welding Way: S-SMT
 - ⑤ Row No.-Pin No.XX-Single row
 - ⑥ Plug the Pin & Special NO.: HF-Halogen free
 - ⑦ Material: LP-LCP 94V-0
 - ⑧ Planting Category: V01:All Gold-Flash ;
SN-Bright tin plating
 - ⑨ Color: Blank-natural color ; BK-black

Poles	Dimensions (mm)			Poles	Dimensions (mm)		
	A	B	C		A	B	C
02	0.80	1.90	3.78	12	8.80	9.90	11.78
03	1.60	2.70	4.58	13	9.60	10.70	12.58
04	2.40	3.50	5.38	14	10.40	11.50	13.38
05	3.20	4.30	6.18	15	11.20	12.30	14.18
06	4.00	5.10	6.98	16	12.00	13.10	14.98
07	4.80	5.90	7.78	17	12.80	13.90	15.78
08	5.60	6.70	8.58	18	13.60	14.70	16.58
09	6.40	7.50	9.38	19	14.40	15.50	17.38
10	7.20	8.30	10.18	20	15.20	16.30	18.18
11	8.00	9.10	10.98				

X0800WVS-XXHF-LPV01BK	PA6T UL 94V-0 Black (Halogen-free)	Phosphor Bronze	Gold-Flash	Brass	Gold-Flash	X0800H
X0800WVS-XXHF-LPSNBK	PA6T UL 94V-0 (Halogen-free)		Gold-Flash		Gold-Flash	
X0800WVS-XXHF-LPSN	LCP UL 94V-0 Halogen-free		Gold-Flash		Gold-Flash	
X0800WVS-XXHF-LPV01			Tin-Plated		Tin-Plated	
PART NO	Material	Material(Pin)	Finish(Pin)	Material (Solder Tabs)	Finish (Solder Tabs)	Suitable Terminal

REVISIONS				UNSPECIFIED TOLERANCES		DSND	SCALE: N/A	MODEL TYPE: BOARD TO BOARD CONNECTOR
DATE				ANGULAR ±5°		DWN	VIEW:	PART NO.:
REVISED				L ≤ 4 ±0.2		CHKD	UNIT: mm/in	DWG NO.:
APPROVED				4 < L ≤ 16 ±0.3		APPD	SIZE: A4	
				16 < L ≤ 63 ±0.4	DONG GUAN XI BANG ELECTRONIC CO., LTD			WEIGHT
				L > 63 ±0.5				SHEET
								REVISION
www.alpsr.com www.gdxjdz.com www.xbswitch.com								1/1
								A0



Recommended P.C.B Layout
General Tolerance±0.05

Specifications :

- Voltage rating: 30V AC / DC
- Current rating: 0.5A AC / DC
- Withstanding voltage: 200V AC/minute
- Temperature range: -25°C~+85°C
- Insulation resistance: ≥100MΩ
- Contact resistance: ≤20mΩ
- After environmental testing: ≤30mΩ

X0800WRS-XXX-LPXXXX

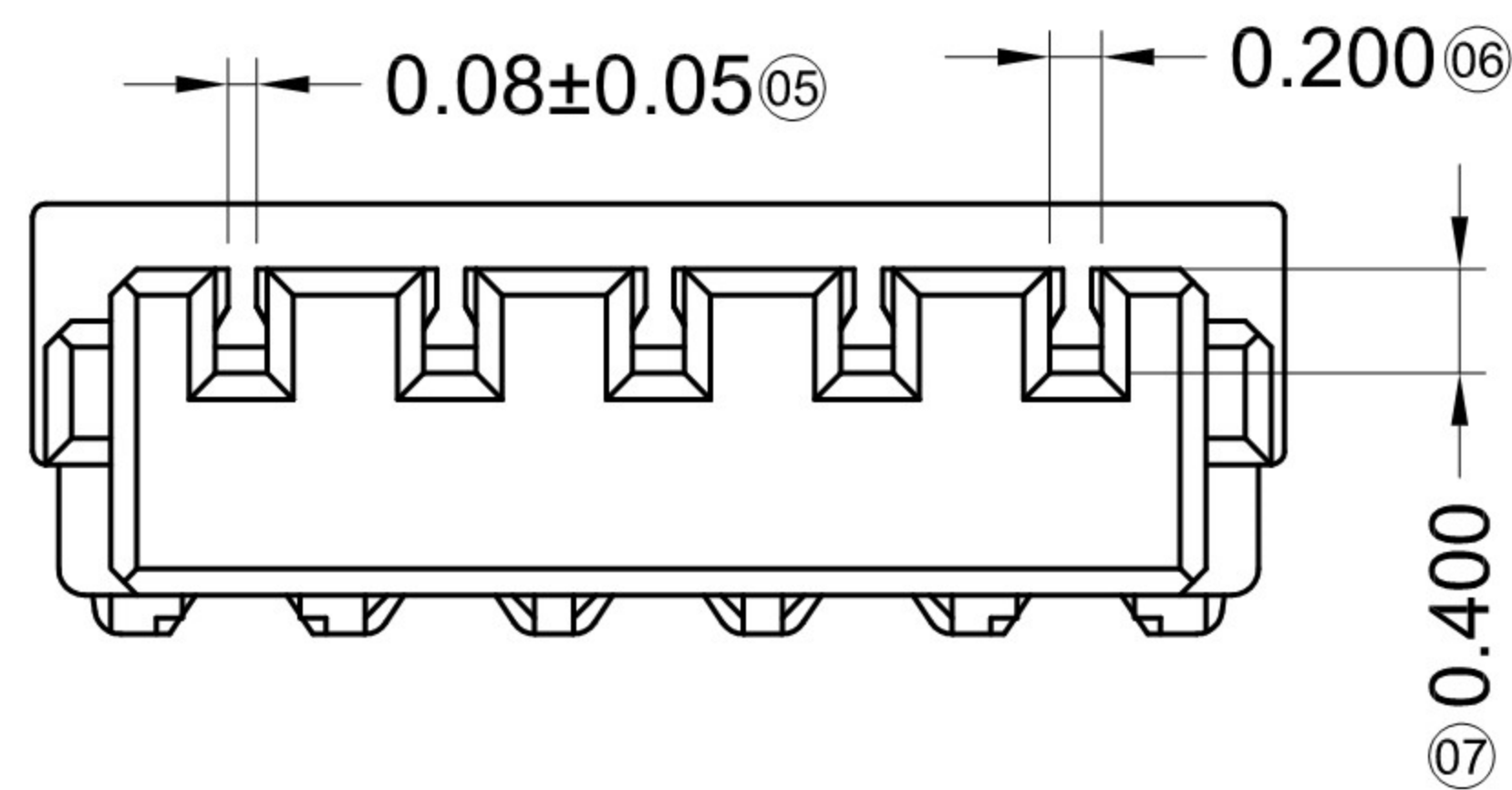
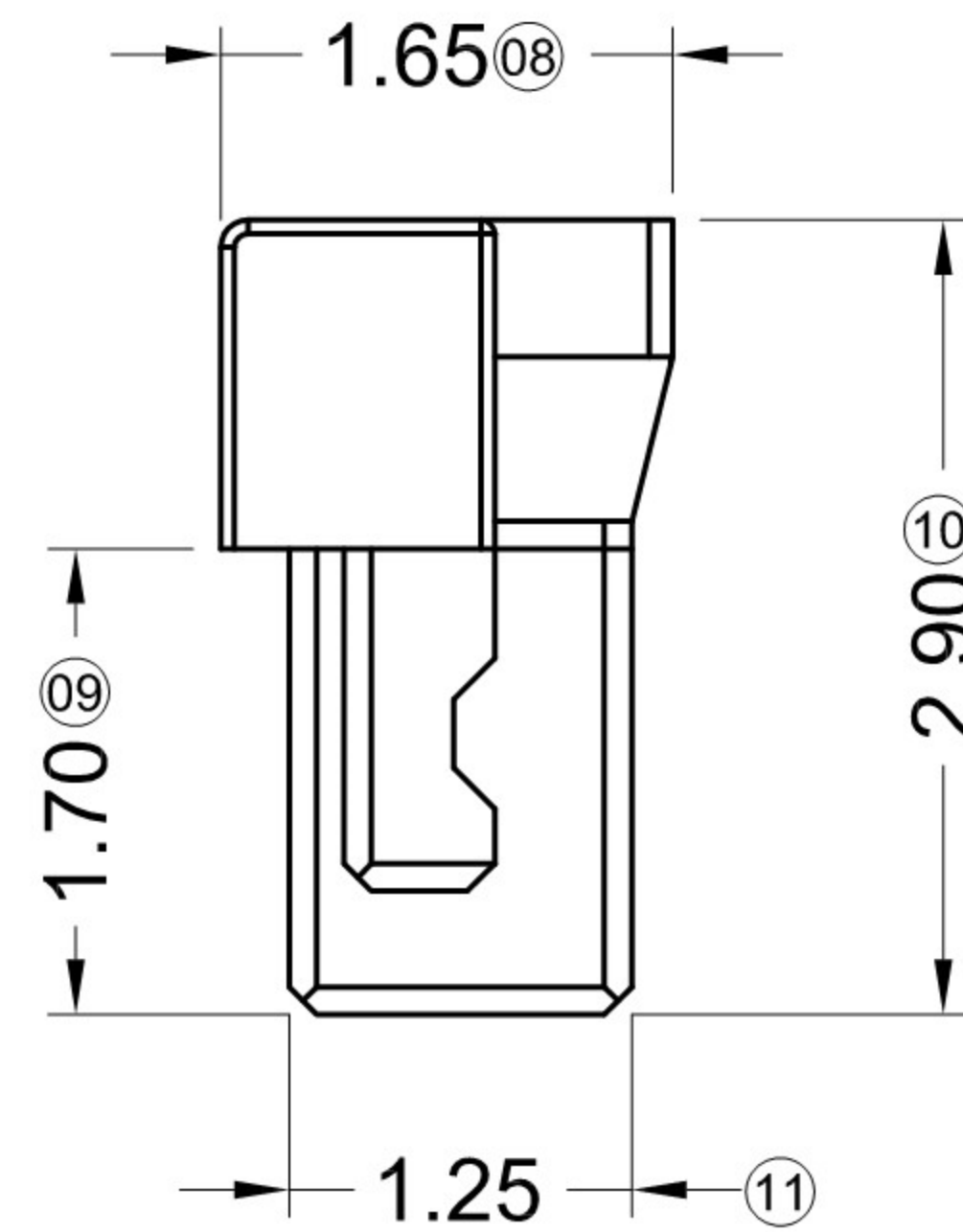
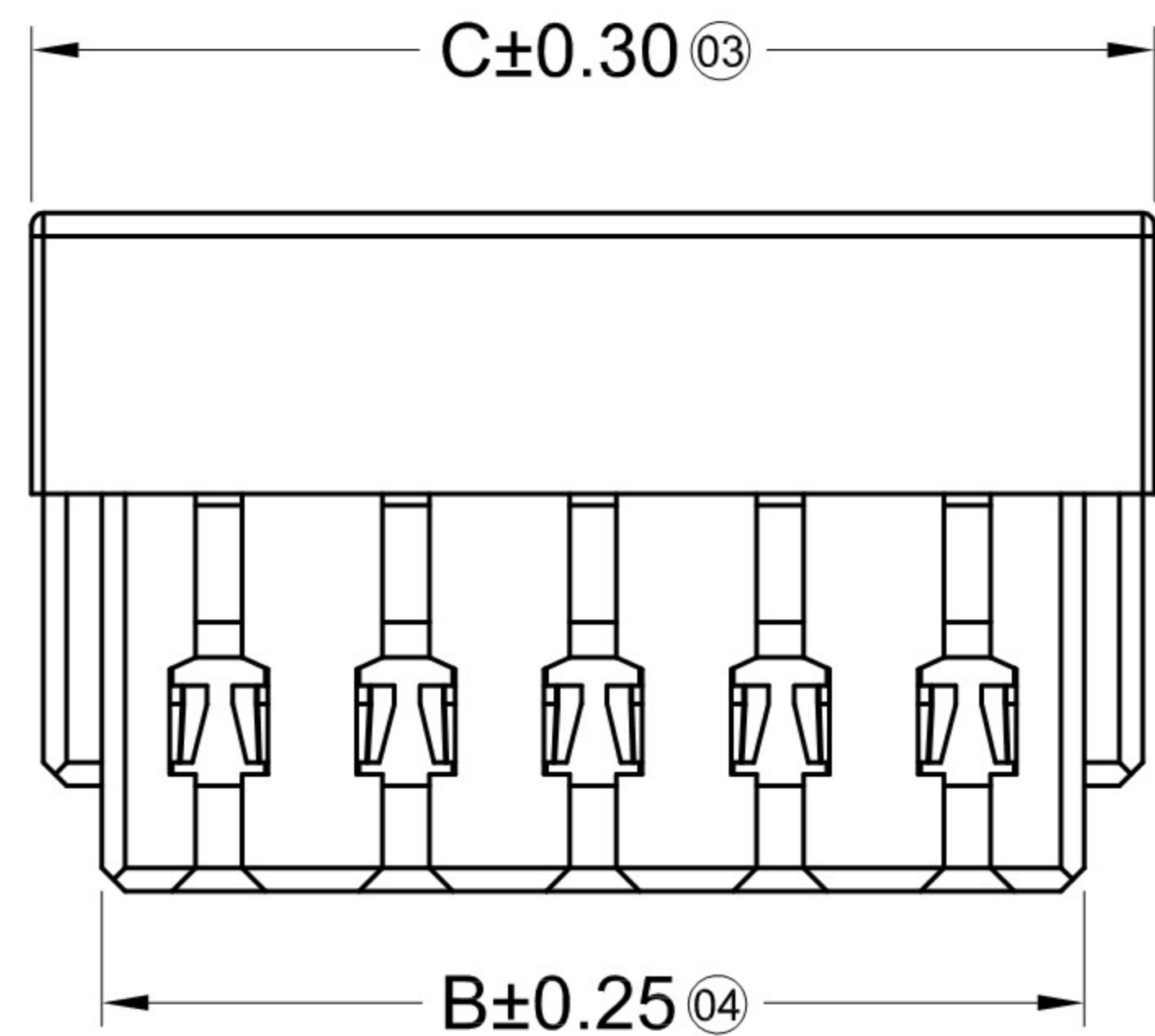
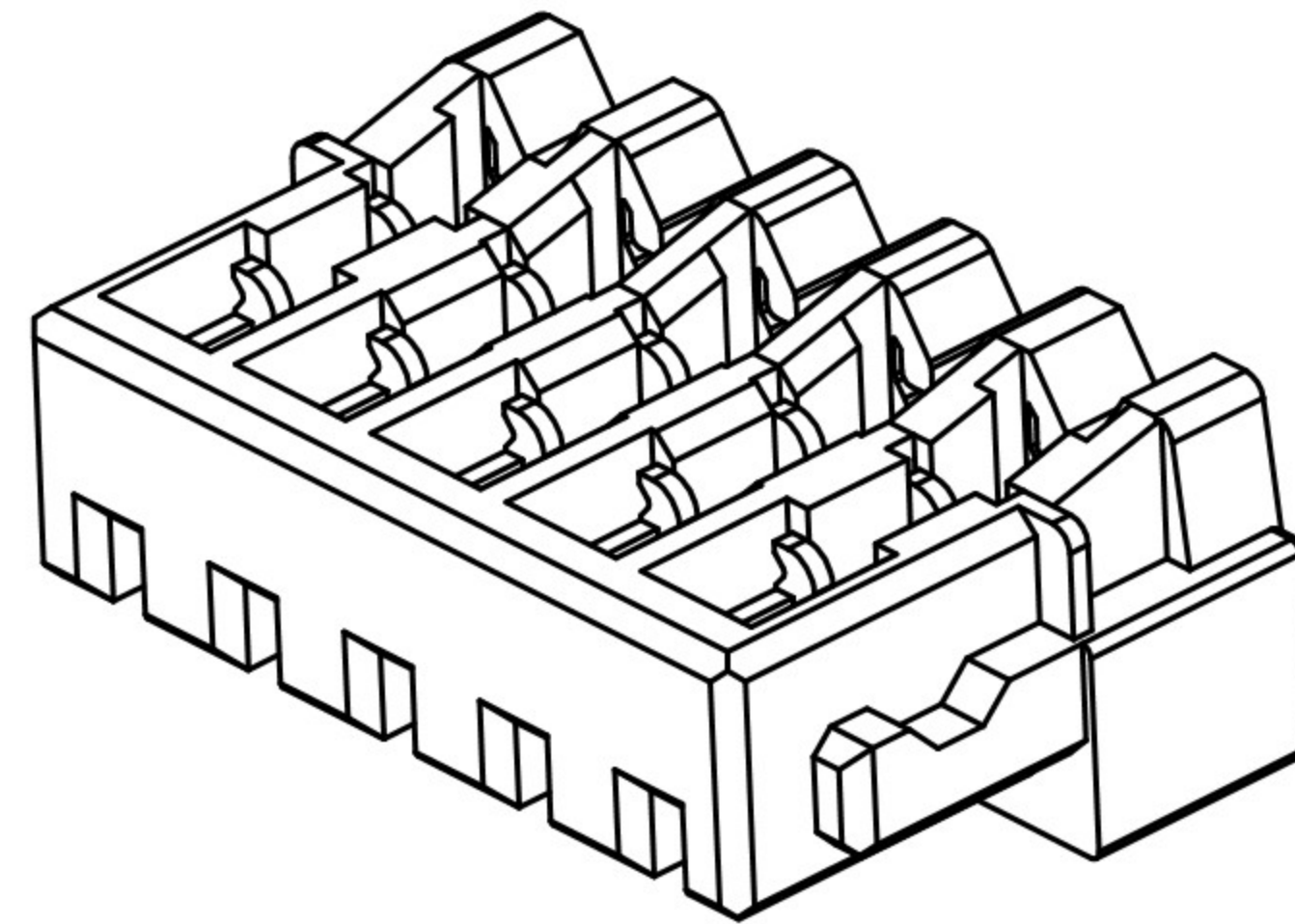
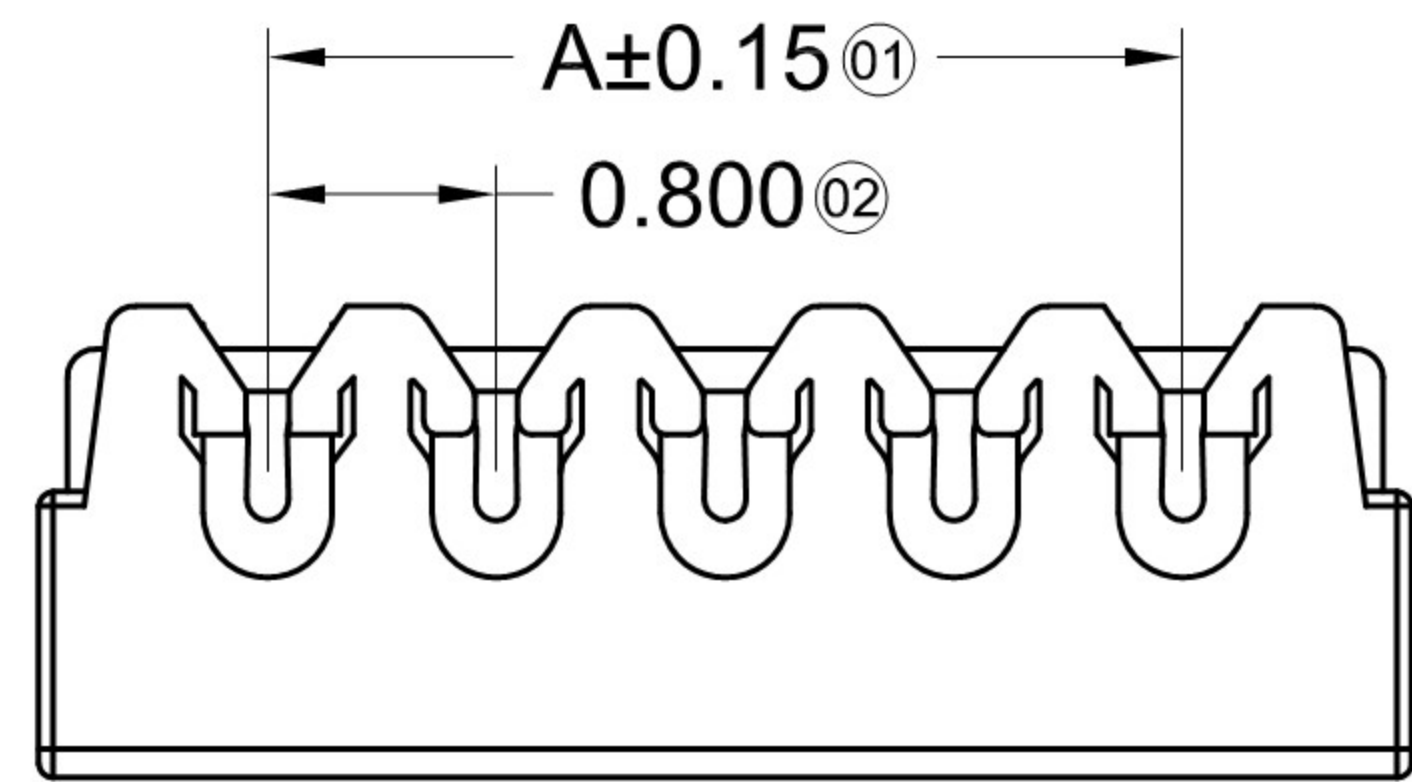
01 02 03 04 05 06 07 08 09

- 01 Series No.
- 02 Category: W-wafer
- 03 Welding Board Angle: R-90°
- 04 Welding Way: S-SMT
- 05 Row No.-Pin No. XX-Single row
- 06 Plug the Pin & Special NO.: HF-Halogen free
- 07 Material: LP-LCP 94V-0
- 08 Planting Category: V01: All Gold-Flash ;
SN-Bright tin plating
- 09 Color: Blank-natural color ; BK-black

Poles	Dimensions(mm)			Poles	Dimensions(mm)		
	A	B	C		A	B	C
02	0.80	1.90	3.78	12	8.80	9.90	11.78
03	1.60	2.70	4.58	13	9.60	10.70	12.58
04	2.40	3.50	5.38	14	10.40	11.50	13.38
05	3.20	4.30	6.18	15	11.20	12.30	14.18
06	4.00	5.10	6.98	16	12.00	13.10	14.98
07	4.80	5.90	7.78	17	12.80	13.90	15.78
08	5.60	6.70	8.58	18	13.60	14.70	16.58
09	6.40	7.50	9.38	19	14.40	15.50	17.38
10	7.20	8.30	10.18	20	15.20	16.30	18.18
11	8.00	9.10	10.98				

X0800WRS-XXHF-LPV01BK	PA6T UL 94V-0 Black (Halogen-free)	Phosphor Bronze	Gold-Flash	Brass	Gold-Flash	X0800H
X0800WRS-XXHF-LPSNBK	PA6T UL 94V-0 (Halogen-free)		Gold-Flash		Gold-Flash	
X0800WRS-XXHF-LPSN	LCP UL 94V-0 Halogen-free		Gold-Flash		Gold-Flash	
X0800WRS-XXHF-LPV01			Tin-Plated		Tin-Plated	
PART NO	Material	Material(Pin)	Finish(Pin)	Material (Solder Tabs)	Finish (Solder Tabs)	Suitable Terminal

REVISIONS				ANGLAR	±5°		DSND	SCALE: N/A	MODEL TYPE: BOARD TO BOARD CONNECTOR		
				L ≤ 4	±0.2		DWN	VIEW:	PART NO.:		
				4 < L ≤ 16	±0.3		CHKD	UNIT: mm/in	DWG NO.:		
				16 < L ≤ 63	±0.4		APPD	SIZE: A4			
				L > 63	±0.5					WEIGHT	SHEET
DATE				REVISED	APPROVED	DONG GUAN XI BANG ELECTRONIC CO., LTD			1/1	A0	
UNSPECIFIED TOLERANCES											
www.alpsr.com www.gdxjdz.com www.xbswitch.com											



Specifications :

- Voltage rating: 30V AC / DC
- Current rating: 0.5A AC / DC
- Withstanding voltage: 200V AC/minute
- Temperature range: -25°C~+85°C
- Insulation resistance: ≥100MΩ
- Contact resistance: ≤20mΩ
- After environmental testing: ≤40mΩ



X0800 H I - XX X - N0 HF

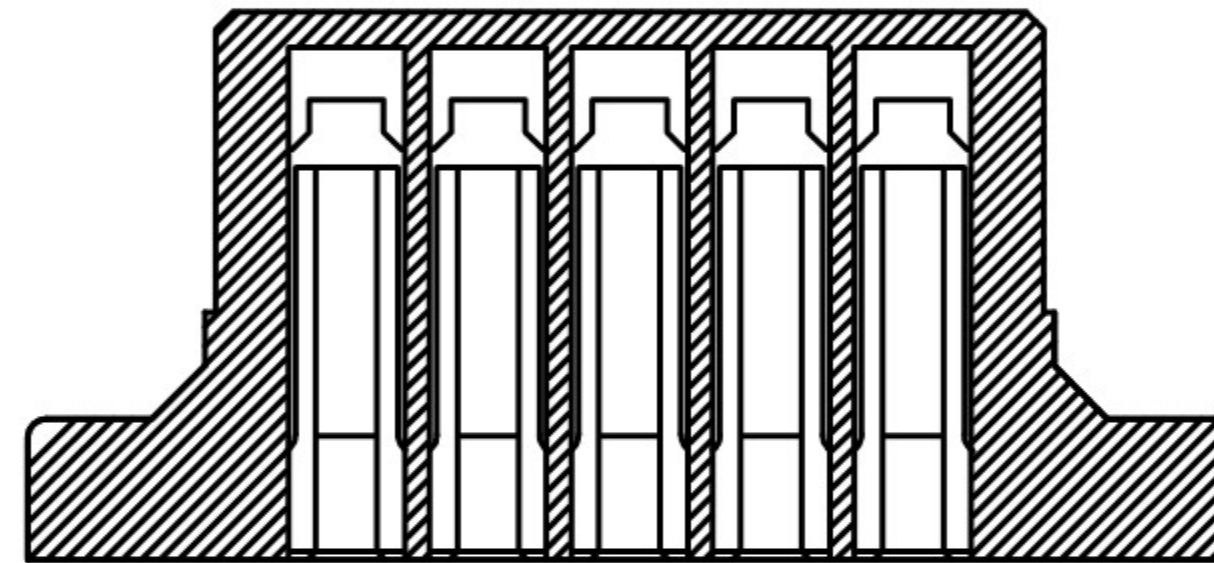
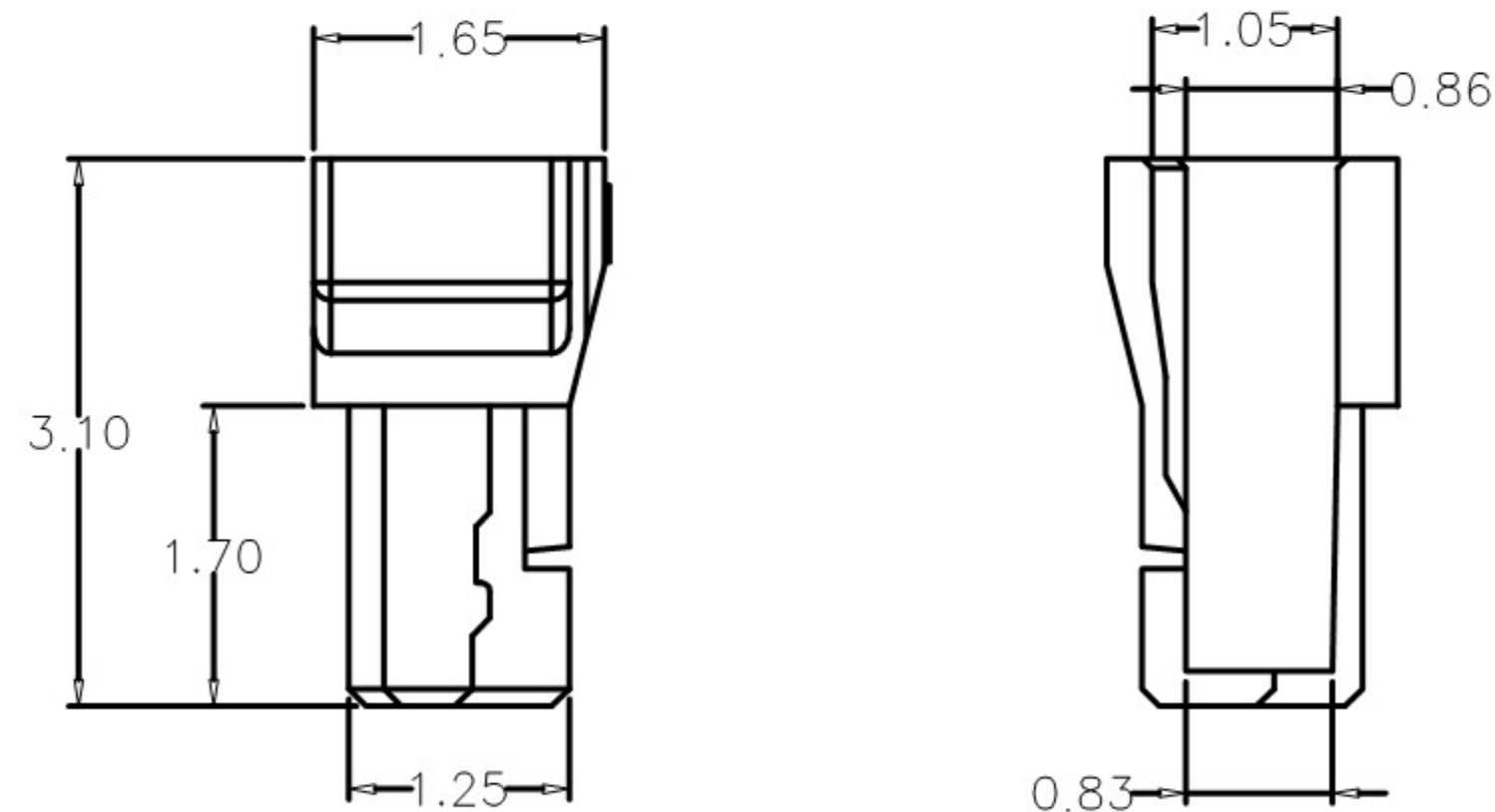
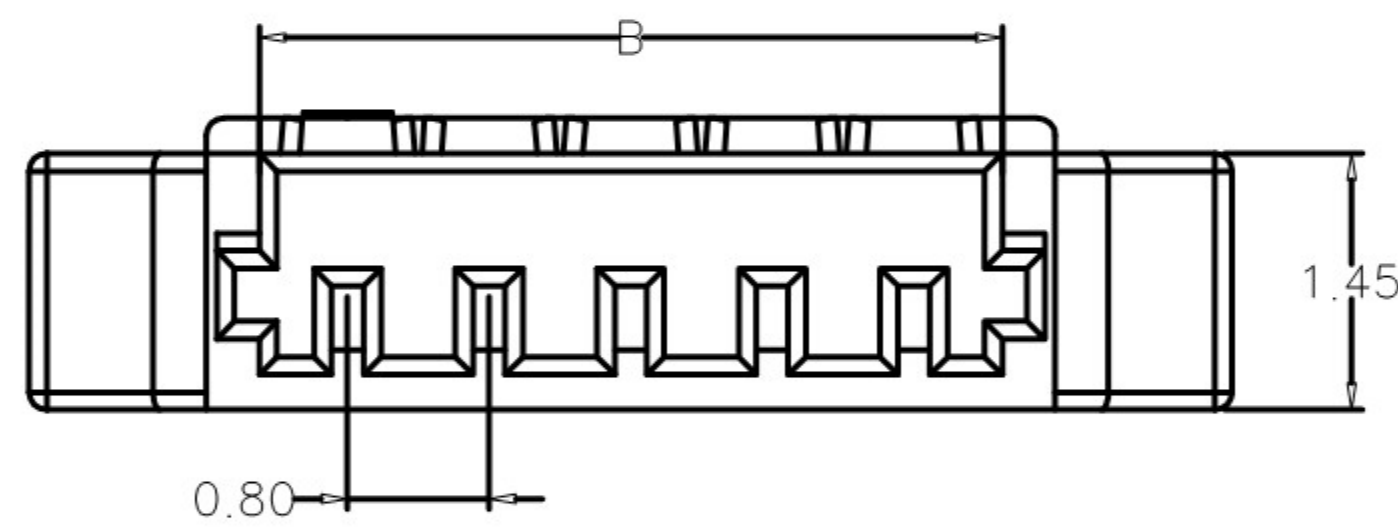
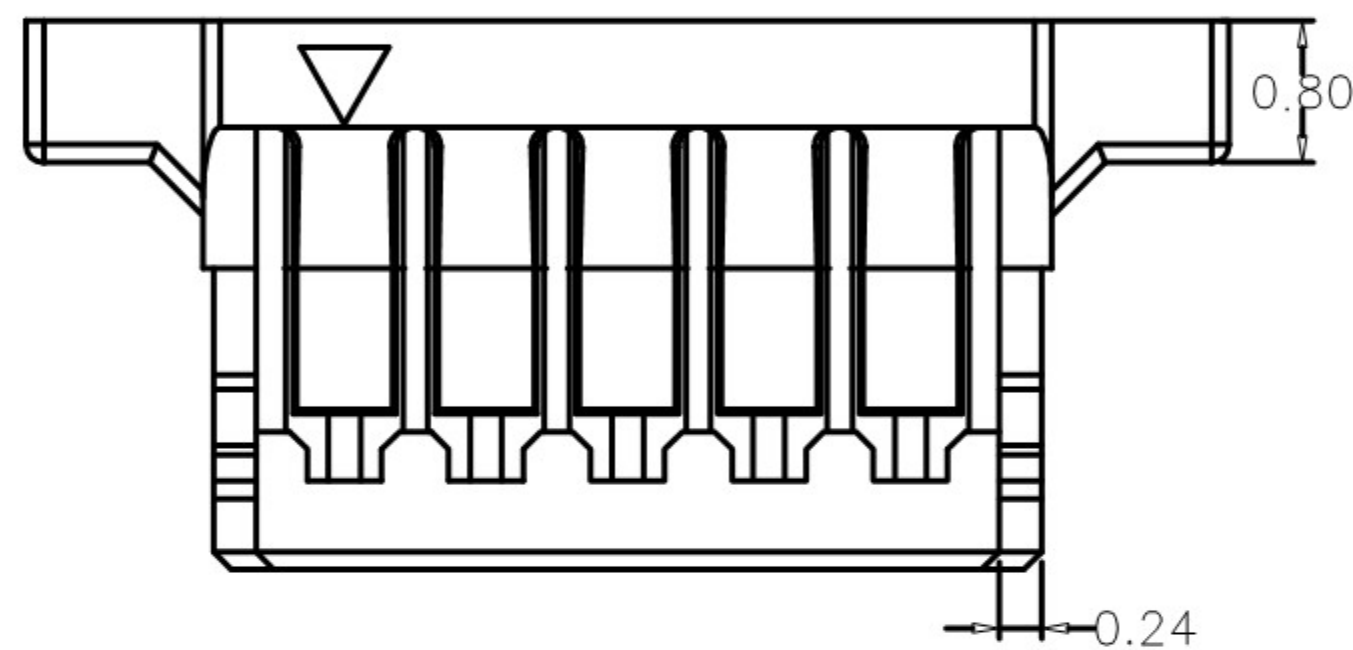
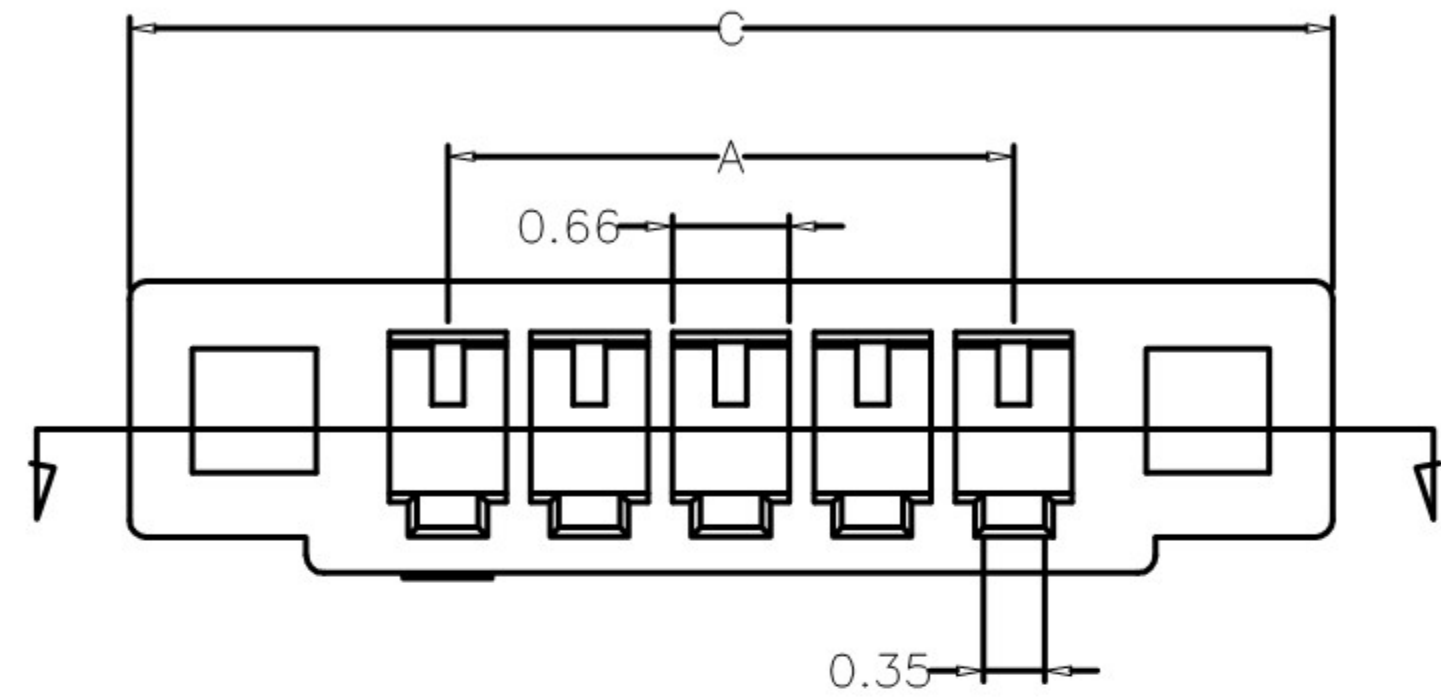
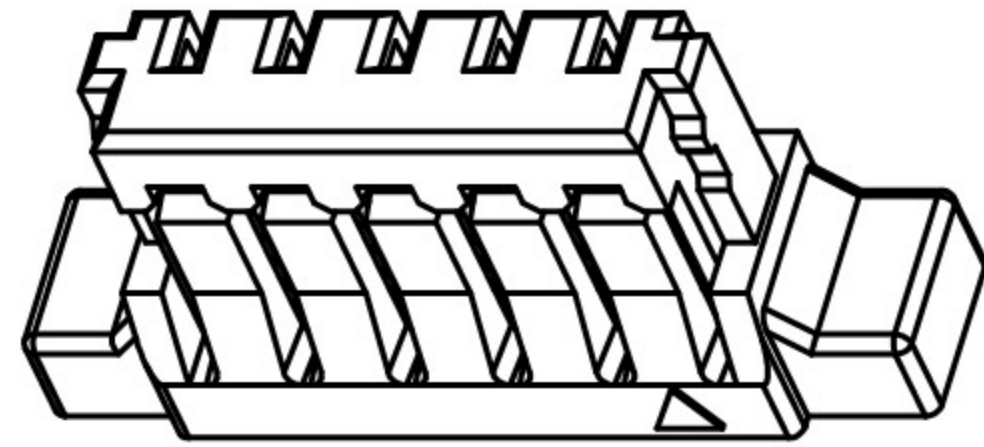
① ②③ ④⑤ ⑥ ⑦

- ① Series No.
- ② Category: H-HSG
- ③ Welding Board Angle: I-HSG+hardware
- ④ Row No.-Pin No.: XX-Single row
- ⑤ Plug the Pin & special No. G-Gold Plating
- ⑥ Material : N0-PA66 94V-0
- ⑦ HF-Halogen free

Poles	Dimensions(mm)			Poles	Dimensions(mm)		
	A	B	C		A	B	C
02	0.80	1.78	2.40	12	8.80	9.78	10.40
03	1.60	2.58	3.20	13	9.60	10.58	11.20
04	2.40	3.38	4.00	14	10.40	11.38	12.00
05	3.20	4.18	4.80	15	11.20	12.18	12.80
06	4.00	4.98	5.60	16	12.00	12.98	13.60
07	4.80	5.78	6.40	17	12.80	13.78	14.40
08	5.60	6.58	7.20	18	13.60	14.58	15.20
09	6.40	7.38	8.00	19	14.40	15.38	16.00
10	7.20	8.18	8.80	20	15.20	16.18	16.80
11	8.00	8.98	9.60				

X0800HI-XX-N0HF	PA66 UL 94V-0 Halogen Free	AWG#32-36	0.39mm(Max)	Phosphor Bronze	Tin-Plated	X0800W
PART NO	Material	Wire Range	Insulation O.D.	Material(Terminal)	Finish(Terminal)	Suitable Terminal

REVISIONS				ANGULAR	±5°		DSND	SCALE: N/A	MODEL TYPE:		
				L ≤ 4	±0.2		DWN	VIEW: 	BOARD TO BOARD CONNECTOR		
				4 < L ≤ 16	±0.3		CHKD	UNIT: mm/in	PART NO.:		
				16 < L ≤ 63	±0.4		APPD	SIZE: A4	DWG NO.:		
				L > 63	±0.5						
DATE	REVISED	APPROVED	UNSPECIFIED TOLERANCES		DONG GUAN XI BANG ELECTRONIC CO., LTD				WEIGHT	SHEET	REVISION
www.alpsr.com www.gdxjdz.com www.xbswitch.com									1/1	A0	



Specifications :

- Voltage rating: 30V AC / DC
- Current rating: 0.5A AC / DC
- Withstanding voltage: 200V AC/minute
- Temperature range: -25°C~+85°C
- Insulation resistance: $\geq 100M\Omega$
- Contact resistance: $\leq 20m\Omega$
- After environmental testing: $\leq 40m\Omega$


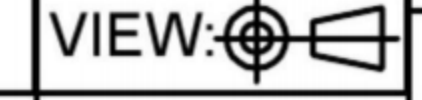
X0800 H - XX - 46 HF

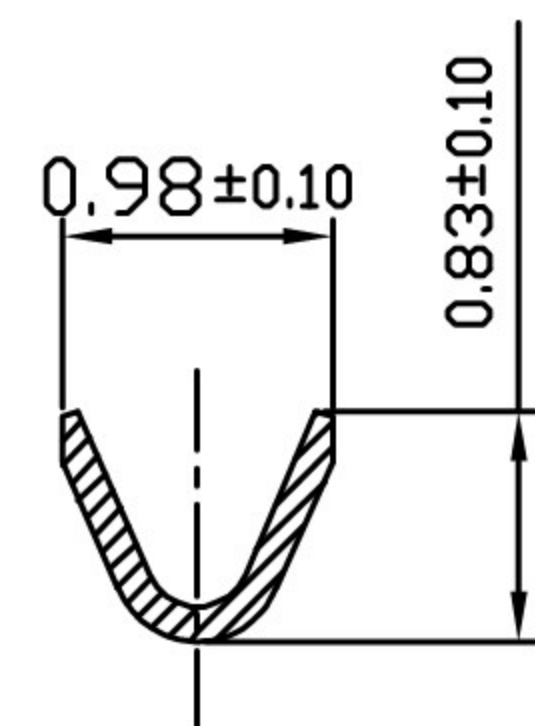
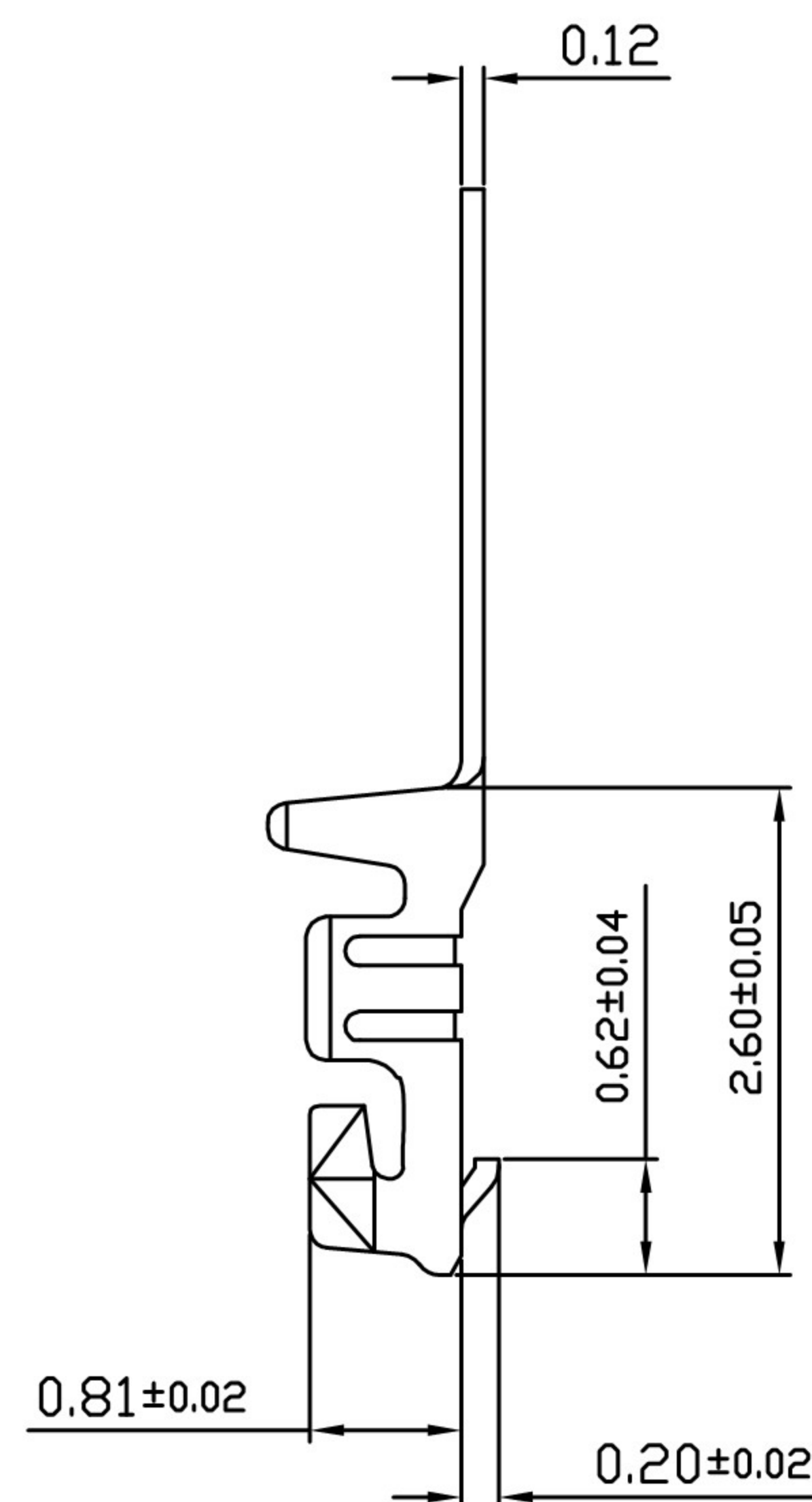
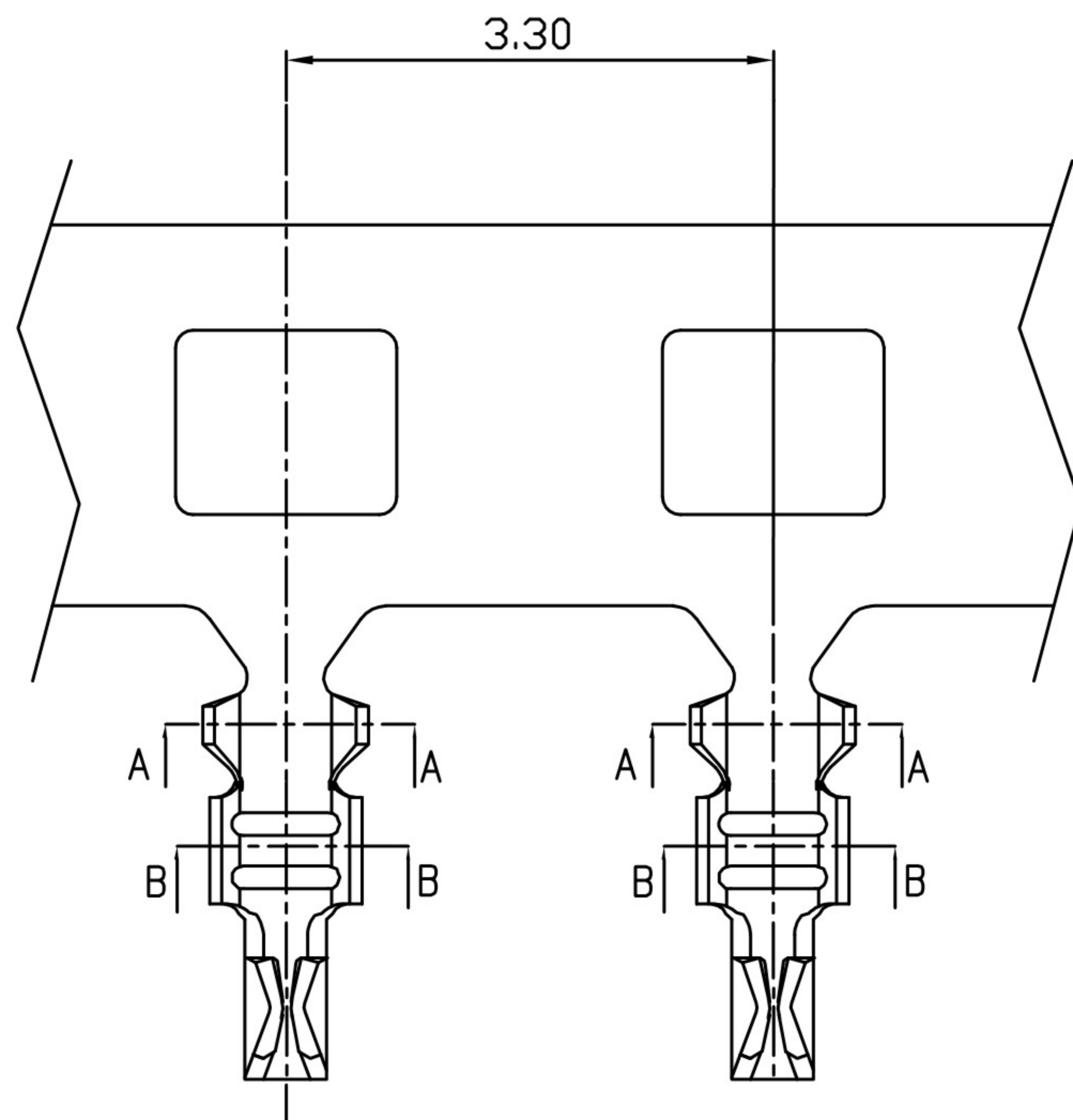
① ② ③ ④ ⑤

- ① Series No.
- ② Category: H-HSG
- ③ Row No.-Pin No.: XX-Single row
- ④ Material : 46-PA46 94V-0
- ⑤ HF-Halogen free

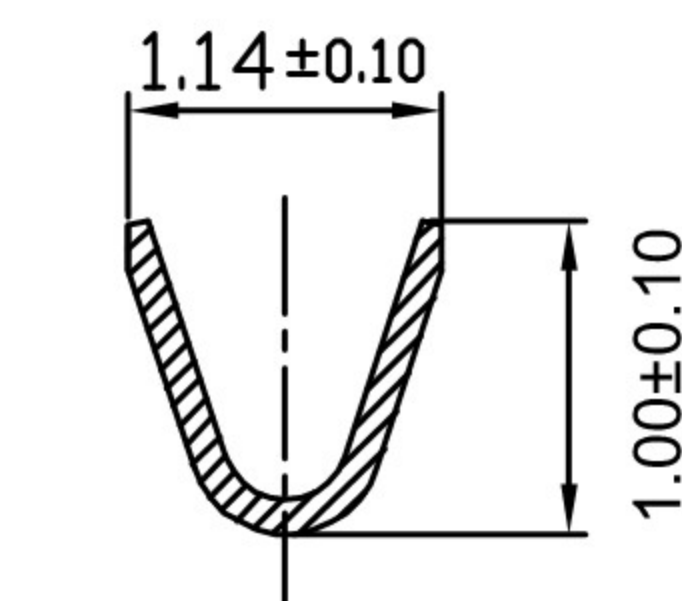
Poles	Dimensions(mm)			Poles	Dimensions(mm)		
	A	B	C		A	B	C
02	0.80	1.80	4.40	12	8.80	9.80	12.40
03	1.60	2.60	5.20	13	9.60	10.60	13.20
04	2.40	3.40	6.00	14	10.40	11.40	14.00
05	3.20	4.20	6.80	15	11.20	12.20	14.80
06	4.00	5.00	7.60	16	12.00	13.00	15.60
07	4.80	5.80	8.40	17	12.80	13.80	16.40
08	5.60	6.60	9.20	18	13.60	14.60	17.20
09	6.40	7.40	10.00	19	14.40	15.40	18.00
10	7.20	8.20	10.80	20	15.20	16.20	18.80
11	8.00	9.00	11.60				

X0800H-XX-46HF	PA46 UL 94V-0 Halogen Free	AWG#32~36	0.39mm(Max)	Phosphor Bronze	Tin-Plated	X0800W
PART NO	Material	Wire Range	Insulation O.D.	Material(Terminal)	Finish(Terminal)	Suitable Terminal

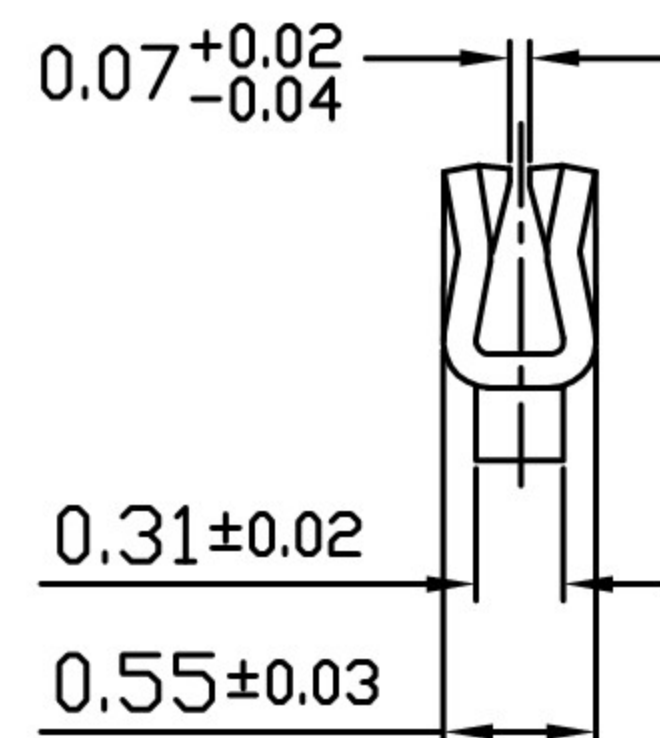
				ANGLAR	$\pm 5^\circ$		DSND		SCALE: N/A	MODEL TYPE: BOARD TO BOARD CONNECTOR	
				$L \leq 4$	± 0.2		DWN		VIEW: 	PART NO.:	
				$4 < L \leq 16$	± 0.3		CHKD		UNIT: mm/in	DWG NO.:	
				$16 < L \leq 63$	± 0.4		APPD		SIZE: A4		
				$L > 63$	± 0.5	DONG GUAN XI BANG ELECTRONIC CO., LTD			WEIGHT	SHEET	REVISION
REVISIONS				UNSPECIFIED TOLERANCES						1/1	A0
DATE				REVISED	APPROVED						
www.alpsr.com www.gdxjdz.com www.xbswitch.com											



SECTION: B-B



SECTION: A-A



Specifications :

- Voltage rating: 30V AC / DC
- Current rating: 0.5A AC / DC
- Withstanding voltage: 200V AC/minute
- Temperature range: -25°C~+85°C
- Insulation resistance: ≥100MΩ
- Contact resistance: ≤20mΩ
- After environmental testing: ≤40mΩ

X0800 T - P XXX

① ② ③ ④

- ① Series Number
- ② Category: T-terminal
- ③ Material: P-Phosphor bronze
- ④ SN-Bright Ni:30-50u" SN:70-120u"
V01-All Gold Flash

X0800T-PSN	High conductive Brass	AWG#32~36	0.39mm(Max)	Phosphor Bronze	Tin-Plated	X0800W	
X0800T-PV01						Suitable	Terminal
PART NO	Material	Wire Range	Insulation O.D.	Material(Terminal)	Finish(Terminal)	Suitable	Terminal

				ANGULAR	±5°
				L ≤ 4	±0.2
				4 < L ≤ 16	±0.3
				16 < L ≤ 63	±0.4
				L > 63	±0.5
REVISIONS				UNSPECIFIED TOLERANCES	
	DATE	REVISED	APPROVED		
www.alpsr.com www.gdxjdz.com www.xbswitch.com					



DONG GUAN XI BANG ELECTRONIC CO., LTD

DSND		SCALE: N/A	MODEL TYPE: BOARD TO BOARD CONNECTOR
DWN		VIEW:	PART NO.:
CHKD		UNIT: mm/in	DWG NO.:
APPD		SIZE: A4	
		WEIGHT	SHEET
			1/1
		REVISION	A0