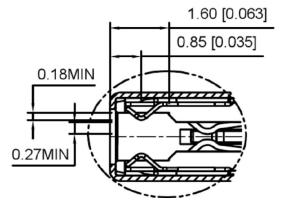
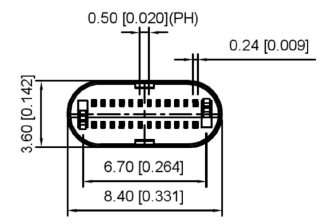
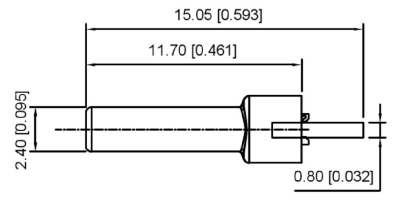
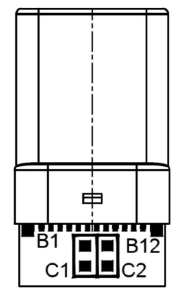
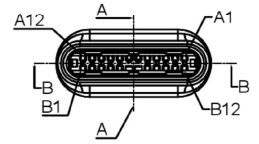
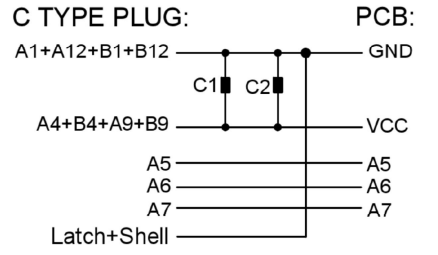


SECT B-B

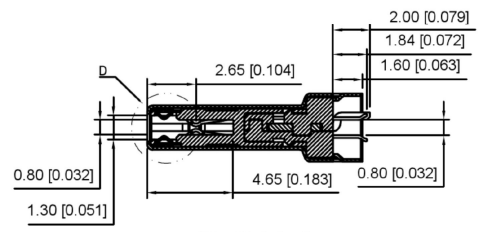


P/N	R/C
U261-24XXN-4B0452	C1, C2(100nF±20%)

U261-24XXN-4B0452
 1: Au
 2: Ni
 1: Au1u"
 2: Au3u"
 4: Au15u"
 5: Au30u"



D
2:1



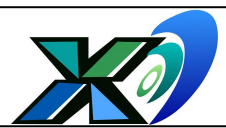
SECT A-A

- REMARKS:
- CONTACT INSERTION AND WITHDRAW FORCE :
 - Insertion force : 5N-20N max.
 - Withdrawal force : 8N-20N.
 - Durability : 10000Cycles.
 - ELECTRIC PROPERTY :
 - Contact current rating : 3A.
 - Dielectric Strength : 100V AC(RMS).
 - Insulation Resistance : 100 megaohms min.
 - Contact resistance :
 - 40mOhms MAX.FOR VBUS,GND AND OTHER CONTACT
 - 50mOhms MAX.AFTER ENVIRONMENT TEST
 - AMBIENT TEMPERATURE :
 - Operating temperature : -55°C to +85°C.

A12	A11	A10	A9	A8	A7	A6	A5	A4	A3	A2	A1
GND	RX2+	RX2-	Vbus	SBU1	D-	D+	CC	Vbus	TX1-	TX1+	GND
GND	TX2+	TX2-	Vbus	Vconn			SBU2	Vbus	RX1-	RX1+	GND
B1	B2	B3	B4	B5	B6	B7	B8	B9	B10	B11	B12

6	Shrapnel	SUS T=0.10mm	
5	Shell	SUS T=0.15mm	Ovep-plating : Ni
4	Terminal	C7025 T=0.15mm	Ovep-plating: Au Ni/Sn
3	Latch	SUS T=0.4mm	
2	Housing	LCP	UL94-0
1	Housing Stopper	LCP	UL94-0
ITEM	DESCRIPTION	MATERIAL	REMARKS

REVISIONS				UNSPECIFIED TOLERANCES			
DATE	REVISED	APPROVED		ANGLAR	±5°		
				L ≤ 4	±0.2		
				4 < L ≤ 16	±0.3		
				16 < L ≤ 63	±0.4		
				L > 63	±0.5		
www.alpsr.com www.gdxjdz.com www.xbswitch.com				DONG GUAN XI BANG ELECTRONIC CO., LTD			



DSND	SCALE: N/A	MODEL TYPE: Type-C 3.1
DWN	VIEW:	PART NO.:
CHKD	UNIT: mm/in	DWG NO.: U261-24XXN-4B0452
APPD	SIZE: A4	WEIGHT SHEET REVISION
		1/1 A0