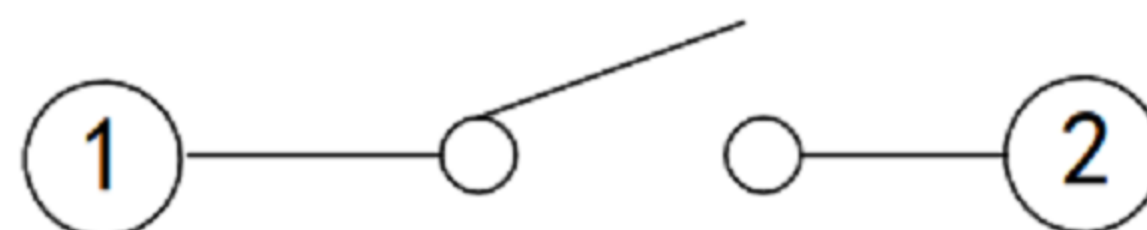
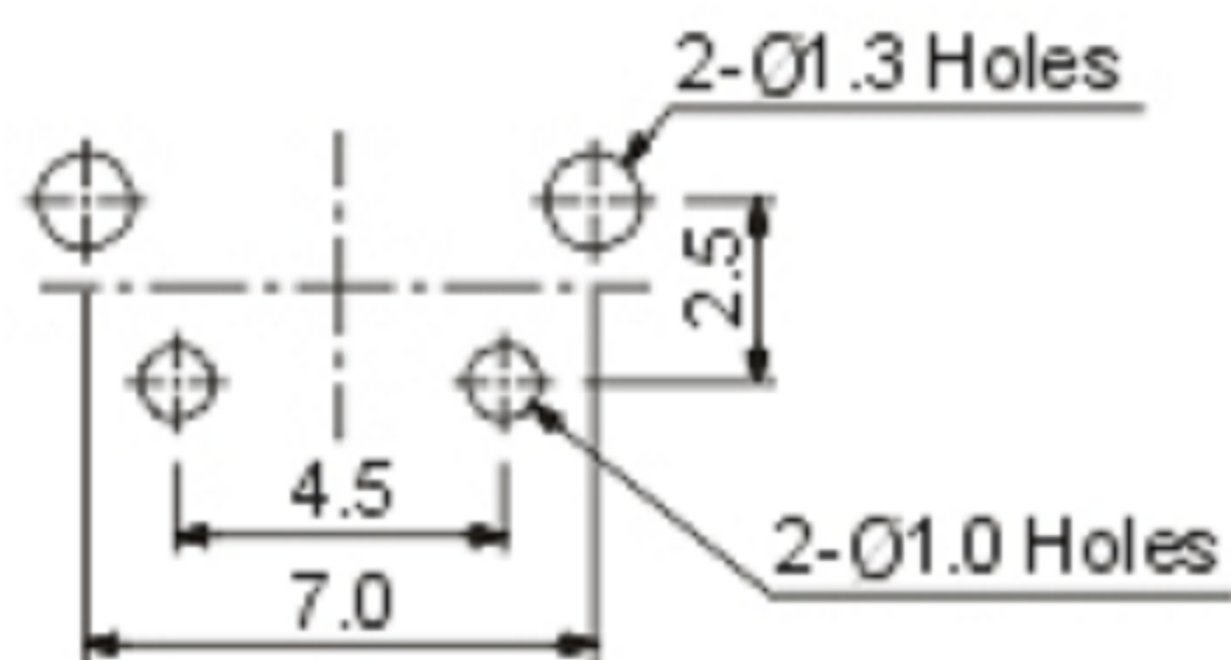
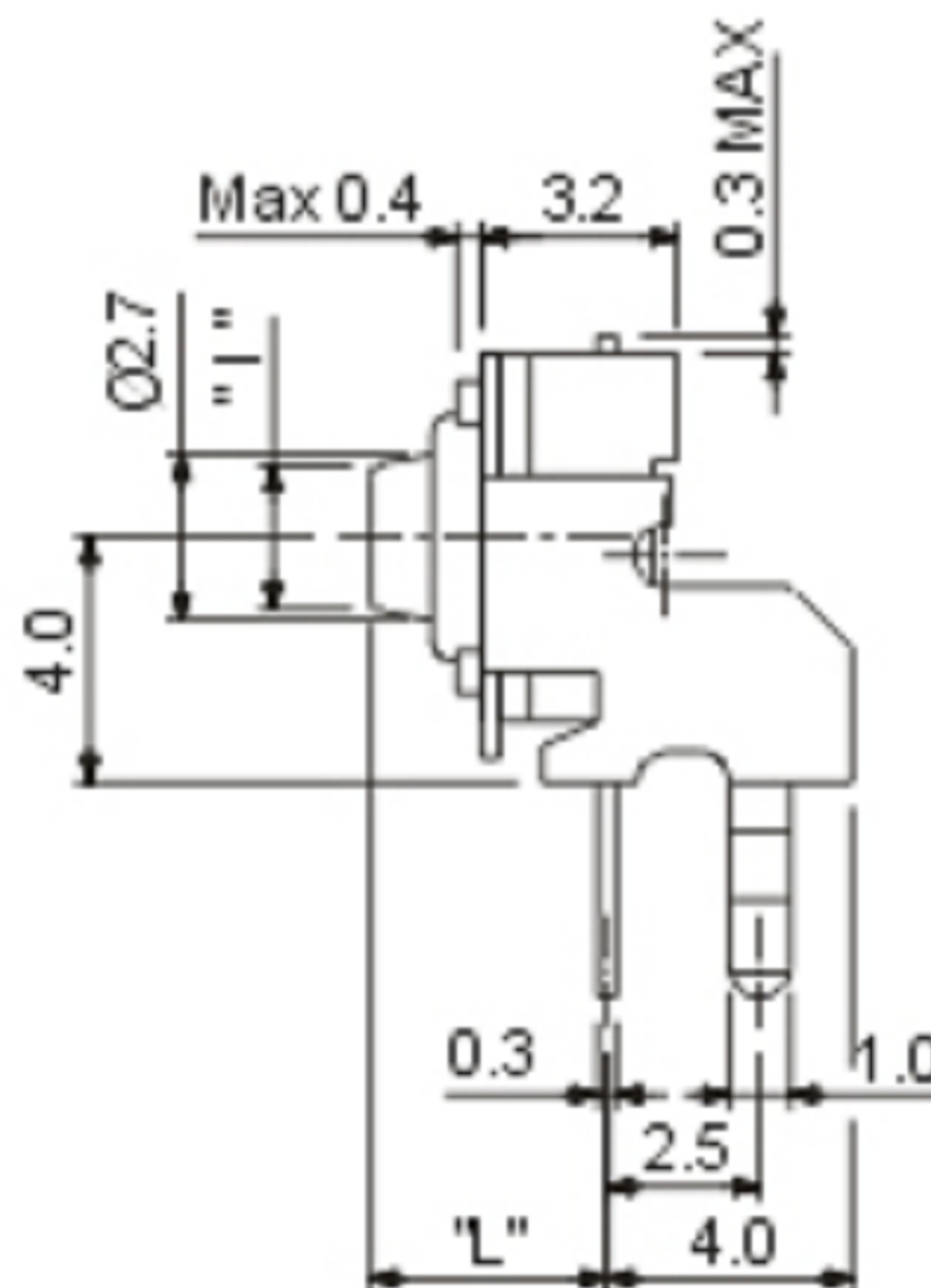
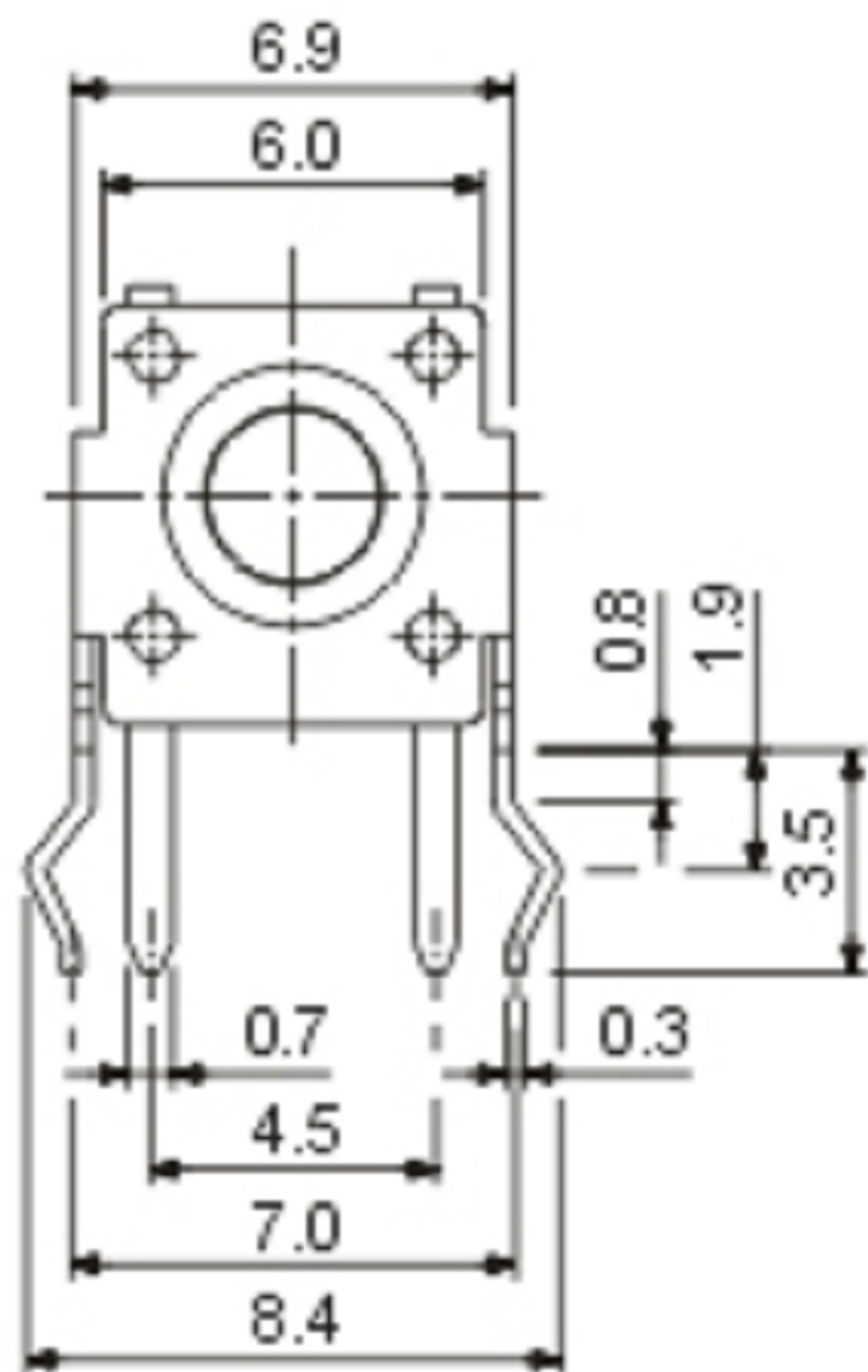


CAD FILE:

ROHS



CIRCUIT DIAGRAM

1. Contact : Mechanical Contact
2. Travel : $0.35 \pm 0.2\text{mm}$
3. Operating Force : $160 \pm 50\text{gf}$, $250 \pm 50\text{gf}$
4. Life : 100,000 Cycles Min.

P.C.B HOLE DIMENSION

8					TOLERANCE						
7					UNLESS SPECIFIED						
6					WITHIN 1.5mm : $\pm 0.1\text{mm}$	A	2012-9-25	初版		ZENQ. CHEN	
5					OVER 1.5mm : $\pm 0.2\text{mm}$	ISSUE	DATE	DESCRIPTIONS OF REVISION		APPD.	
4	CONTACT	SUS	1	Ag CLAD	TITLE : Tact Switch			UNIT : mm	DRWG NO.: XB-TS-1236		
3	CASE	PPA/BRASS SRTIP	1	BLACK/Ag PLATED	MODEL: XB-TS-1236			SCALE: 5:1	DWN.	JUN. YANG	2012-9-25
2	COVER	STEEL STRIP	1	Ni PLATED	东莞市溪榜电子有限公司 DONG GUAN XI BANG ELECTRONICS CO., LTD.			CHK'D	DONG. PANG	2012-9-25	
1	KNOB	PPA	1	BLACK				APPD.	ZENQ. CHEN	2012-9-25	
NO.	PARTS	MATERIALS	Q'TY	FINISH							