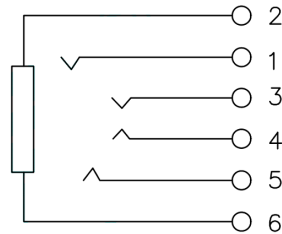
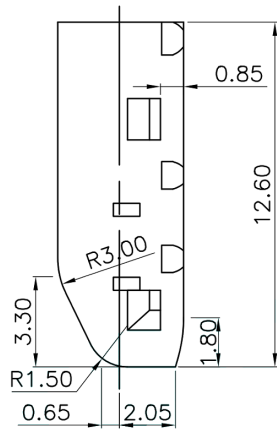
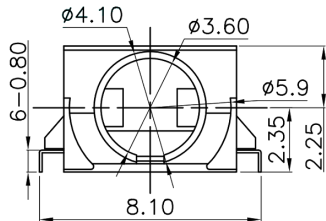




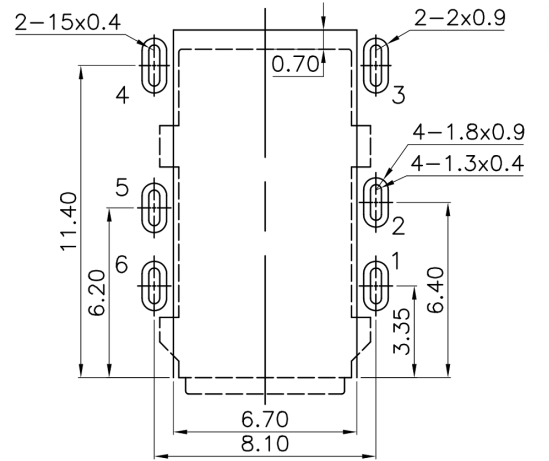
CAD FILE:



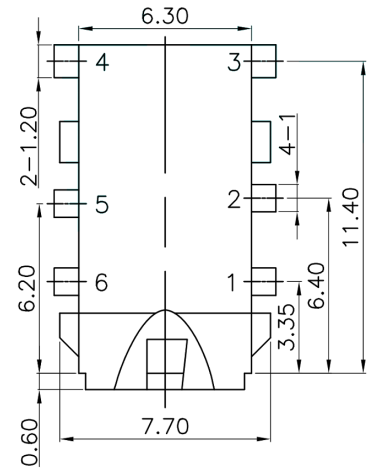
CIRCUIT DIAGRAM



Rating:0.5A 30V DC  
 Contact Resistance:100 mΩ Max.  
 Operating temperature:-20℃~70℃  
 Operating force:3-20N  
 Operating Life:5,000cycles



P.C.B LAYOUT



|     |         |                 |      |                 |   |       |           |                          |                          |
|-----|---------|-----------------|------|-----------------|---|-------|-----------|--------------------------|--------------------------|
| 8   |         |                 |      |                 | TOLERANCE   |       |           |                          |                          |
| 7   |         |                 |      |                 | UNLESS SPECIFIED  |       |           |                          |                          |
| 6   |         |                 |      |                 | WITHIN 1.5mm : ±0.1mm                                   | A     | 2023-6-21 | 初版                       | ZENQ. CHEN               |
| 5   |         |                 |      |                 | OVER 1.5mm : ±0.2mm                                     | ISSUE | DATE      | DESCRIPTIONS OF REVISION | APPD.                    |
| 4   | CONTACT | SUS             | 1    | Ag CLAD         | TITLE : Audio iack                                      |       |           | UNIT : mm                | DRWG NO.: XB-PJ-602      |
| 3   | CASE    | PPA/BRASS SRTIP | 1    | BLACK/Ag PLATED | MODEL:  |       |           | SCALE: 5:1               | DWN. JUN. YANG 2023-6-21 |
| 2   | COVER   | STEEL STRIP     | 1    | Ni PLATED       | 东莞市溪榜电子有限公司<br>DONG GUAN XI BANG ELECTRONI CS CO., LTD. |       |           | CHK'D                    | DONG. PANG 2023-6-21     |
| 1   | KNOB    | PPA             | 1    | BLACK           |   |       |           | APPD.                    | ZENQ. CHEN 2023-6-21     |
| NO. | PARTS   | MATERIALS       | Q'TY | FINISH          |   |       |           |                          |                          |