

REV	DESCRIPTION	DRW	DATE
A/02		OU.XH	2017-3-16

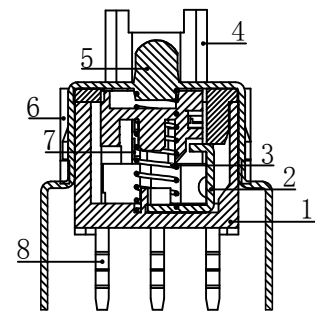
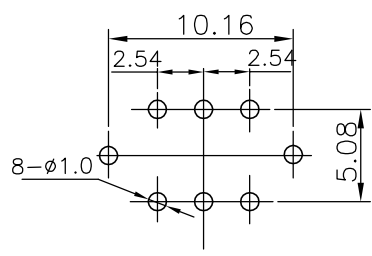
- NOTES:
1. RATING: 30VDC 0.1A
  2. CONTACT RESISTANCE: 50mΩ Max
  3. INSULATION RESISTANCE: 100MΩ 500VDC FOR 1MIN
  4. DIELECTRIC STRENGTH: 500VAC (50/60Hz) FOR1MIN
  5. LIFE TEST: 10,000 CYCLES
  6. OPERATION FORCE: A--150±100gf (Mormentary)  
B--250±100gf (Push to lock)
  7. TRAVEL: FULL: 1.6±0.4mm LOCK: 1.4±0.4mm

LED COLOR					
1	2	3	4	5	6
Red	Yellow	Green	Blue	White	Pure Green

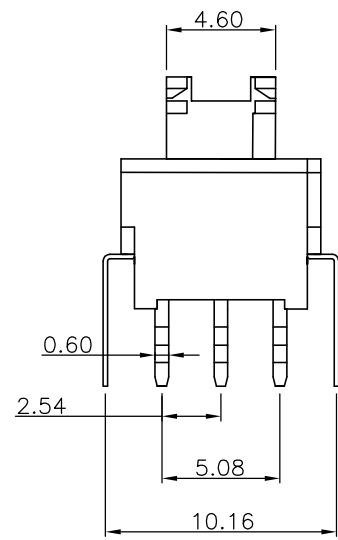
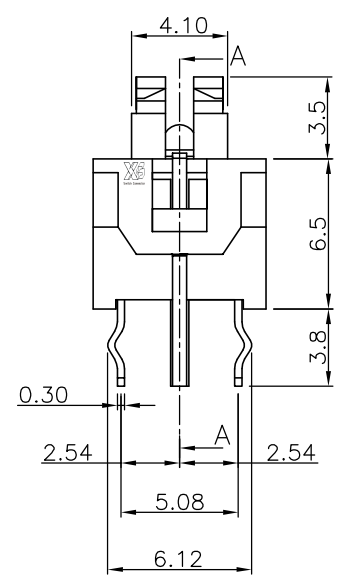
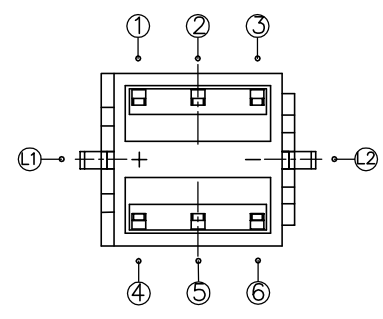
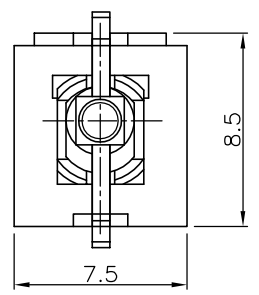
Type	Switch	Action	Circuit
LOCK	Normal ON	Push to lock OFF	
Connectong Terminal	1 - 2 4 - 5	2 - 3 5 - 6	
NO LOCK	Normal ON	Push (ON)	
Connectong Terminal	1 - 2 4 - 5	2 - 3 5 - 6	
LED Circuit			

序號	名稱	材料
1	底座	PA66
2	勾針	SUS
3	彈簧	SUS
4	按鍵	POM
5	LED	GaAsP/GaP
6	上蓋	PA66
7	彈片	PBS
8	端子	H65 (C2680) /PBT

P.C.B LAYOUT



A-A



**XB** 东莞市溪榜电子有限公司  
Switch Connector DONG GUAN XI BANG ELECTRONICS CO., LTD.

TOLERANCE		DRAWN	DATE	TITLE	PUSH SWITCH
UNLESS OTHERWISE STATED		OU.XH	2017.03.16	MODEL	
X.X	±0.25	≤	±2°	CHK'D	DATE
X.XX	±0.15	UNIT	mm	APPV'D	DATE
REV	A/02	SCALE	4:1		
SIZE	A4	SHEET	1 OF 1		