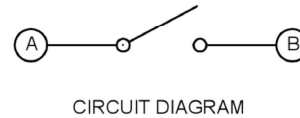
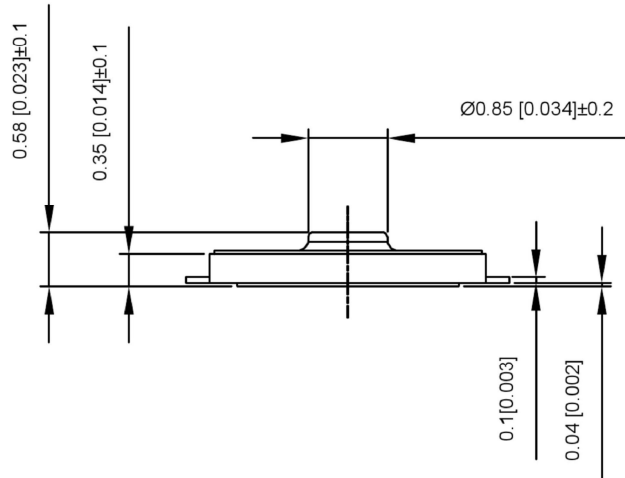


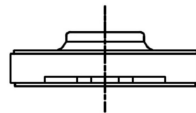
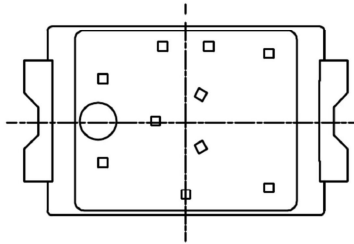
PCB SOLDER LAND DIMENSIONS

SPECIFICATION

Contact Rating: 50mA, 12V DC
Contact Resistance: 100mΩ max
Insulation Resistance: 100mΩ min. 500V DC
Dielectric Strength: 250V AC/1minute
Travel: 0.13mm
Operating Temp: -30°C~+85°C
Storage Temp: -30°C~+80°C



PAPT NO	TS-2030-2-X
Operating Force	B:160gf C:260gf
Height	H:0.58



ITEM	PAPT NAMF	TER,NO	QTY	MATERIAL	FINISHING	REMARK
⑤	Terminal	—	2	Brass (0.30t)	Plating silvering	—
④	Contact	—	1	F.ag/Sus	Natural	—
③	Base	—	1	Lcp	—	—
②	Cover	—	1	Polyamide	Plating Nickel	—
①	Keystake	—	1	Pet	—	—

DATE	REVISED	APPROVED	UNSPECIFIED TOLERANCES



DSND	SCALE: N/A	MODEL TYPE: TACT SWITCH
DWN	VIEW:	PART NO.: TS-2030-2-X
CHKD	UNIT: mm/in	DWG NO.:
APPD	SIZE: A4	
	WEIGHT	SHEET