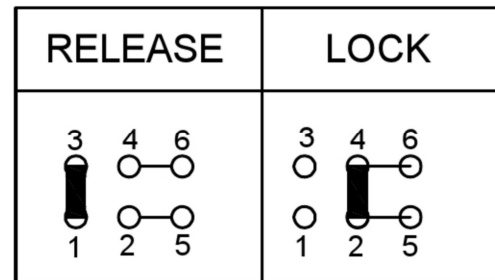
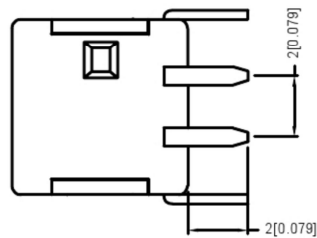
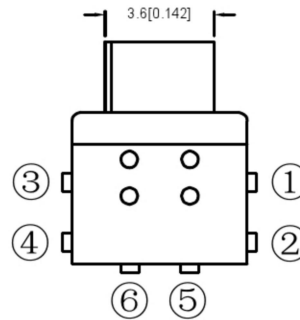
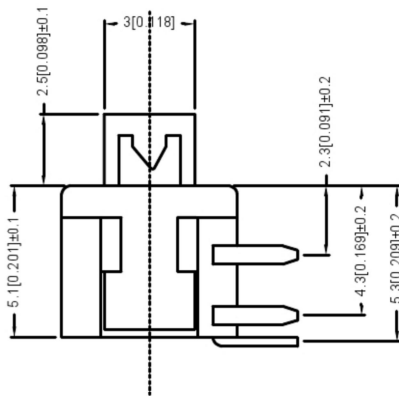


PCB LAYOT



CIRCUIT DIAGRAN

FEATURES

特征

Light operating force.

轻操作力。

Long term low contact resistance.

长期接触电阻低。

Momentary or latching operation.

固定或闭锁操作。

Short stroke 1.5mm to latch.

短行程1.5毫米至闭锁。

SPECIFICATIONS

1.ELECTRICAL

Contact rating	0.1A,30VDC
Contact resistance	50mWMax.
Insulation resistance	100MWMin. at 250VDC
Dielectric strength	250VAC Min. for 60 sec.

2.MECHANICAL AND ENVIRONMENTAL

Temperature rating	Operating:-15°C to+55°C Storage: -25 °C to +65 °C
Operation force	250±50gf
Stroke	Lock Stroke: 1.5+0.2mm Full Stroke: 2.0+0.2mm
Operating life	full load: 1x10 ⁴ cycles no load: 1 x 10 ⁵ cycles
Contact form	DPDT

PAPT NO	XB8585-X-E-75
OPERATION	W:NO LOCK Z:LOCK

ITEM	PAPT NAMF	TER.NO	QTY	MATERIAL	FINISHING	REMARK
⑦	Contact	—	2	Phosphor bronze	Plating silvering	—
⑥	Terminal	—	6	Brass	Plating silvering	—
⑤	Spring	—	1	Sus	Natural	—
④	Base	—	1	Ppa		—
③	Crochet Needle	—	1	Sus	Natural	—
②	Cover	—	1	Ppa		—
①	Keystake	—	1	Ppa		—

DSND		SCALE: N/A	MODEL TYPE: KEY SWITCH
DWN		VIEW:	PART NO.: XB8585-X-E-75
CHKD		UNIT: mm/in	DWG NO.:
APPD		SIZE: A4	
		WEIGHT	SHEET
			1/1
		REVISIC	A0



DONG GUAN XI BANG ELECTRONIC CO., LTD

ANGLAR	±5°
L ≤ 4	±0.2
4 < L ≤ 16	±0.3
16 < L ≤ 63	±0.4
L > 63	±0.5
UNSPECIFIED TOLERANCES	

DATE	REVISED	APPROVED
------	---------	----------