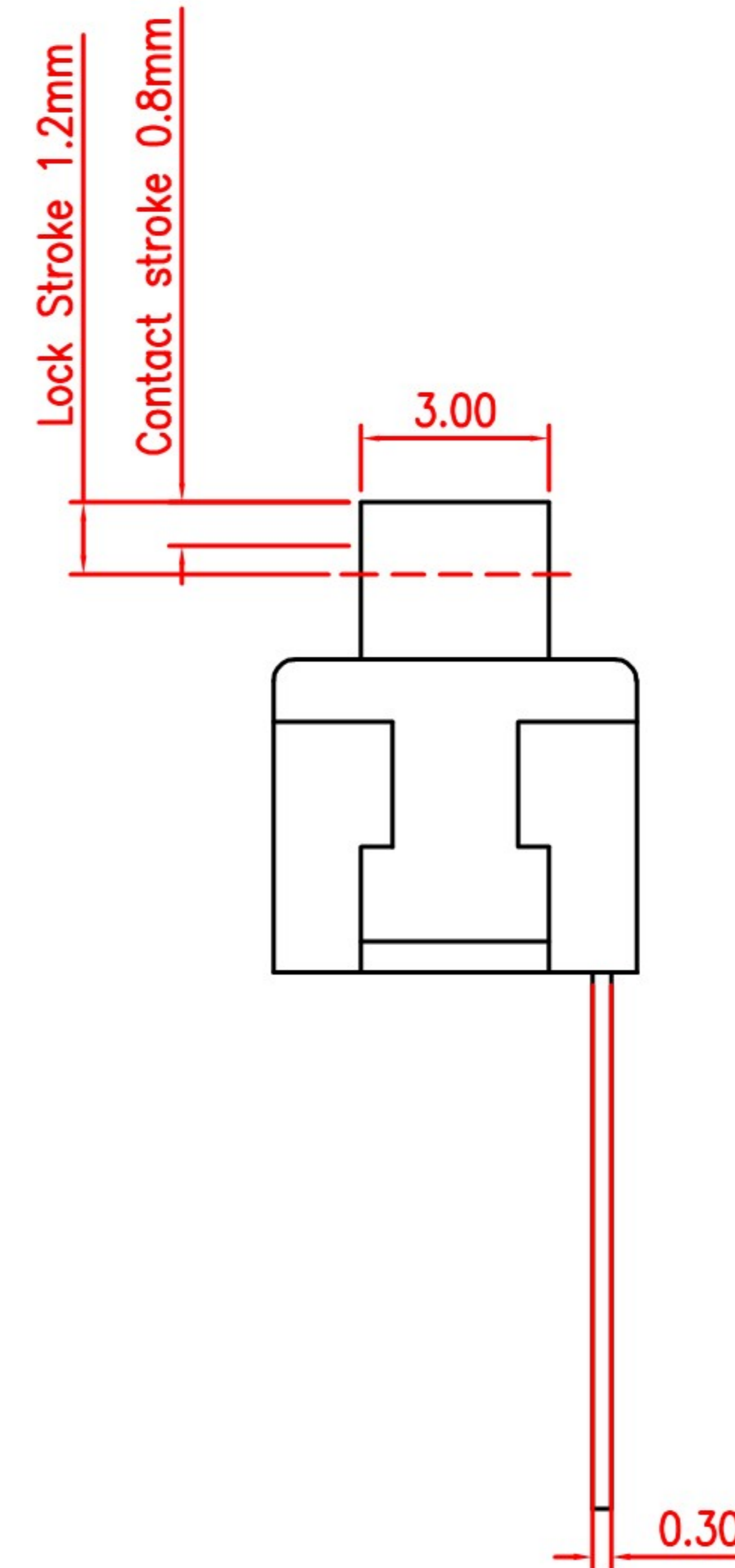
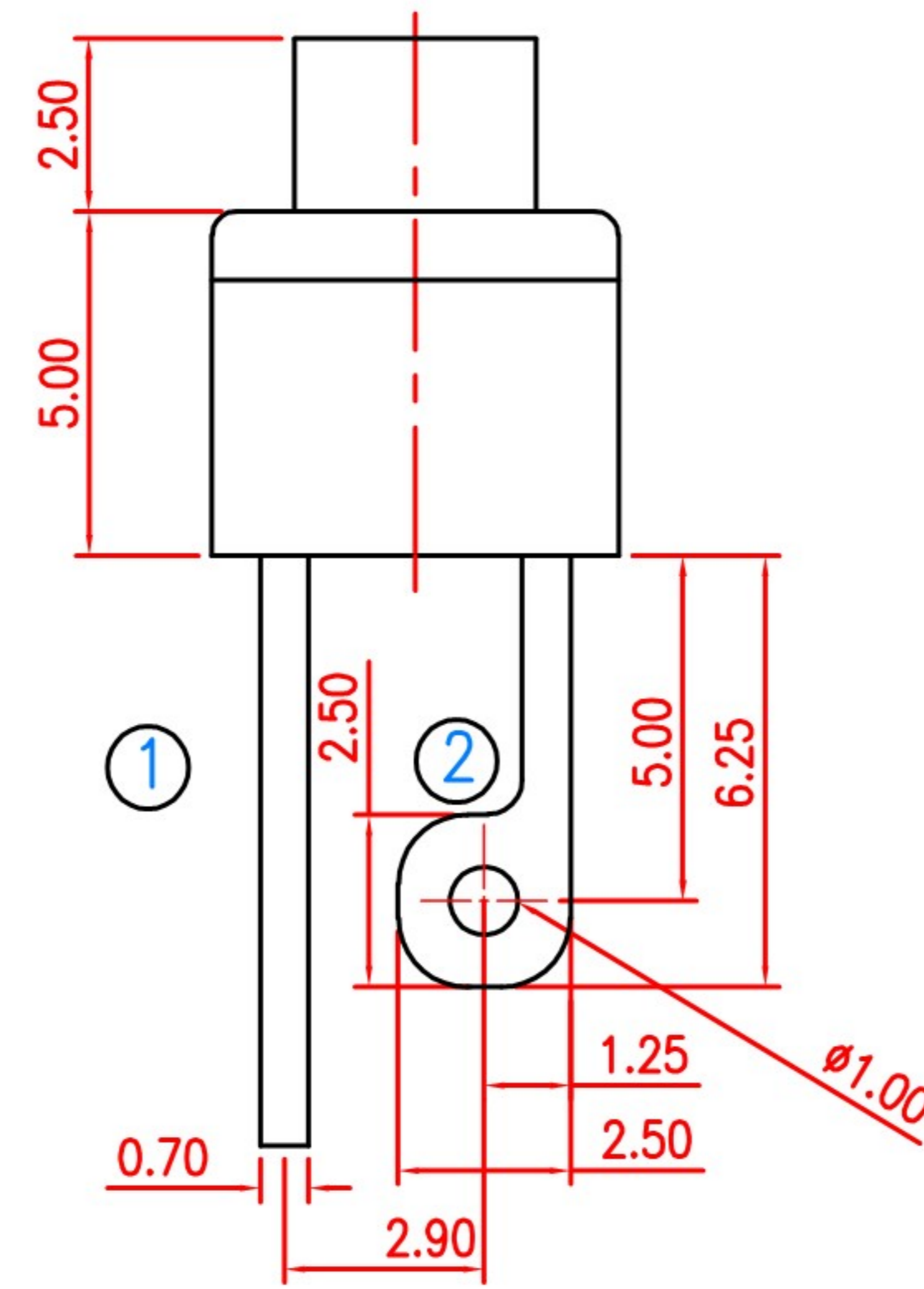
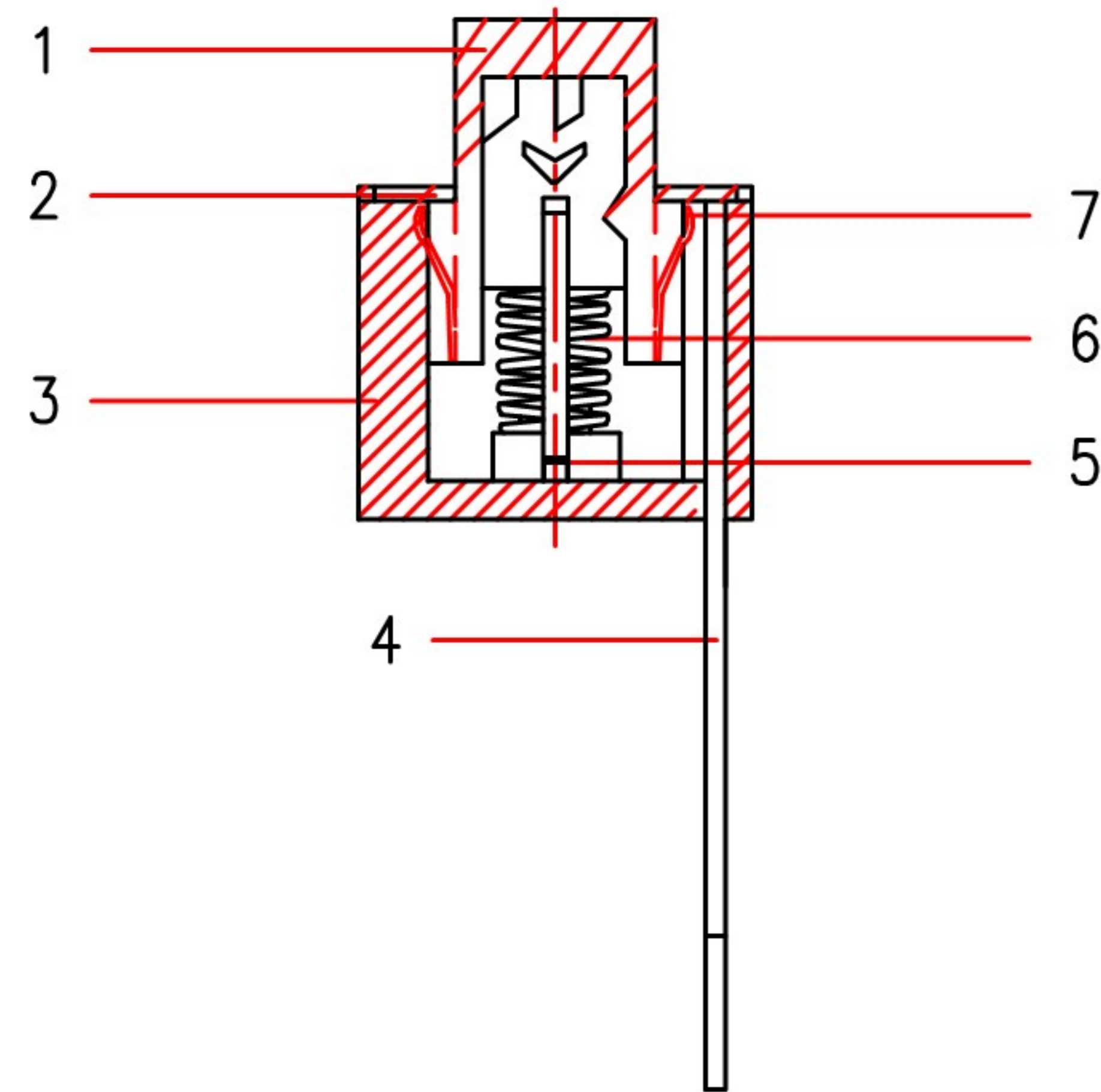
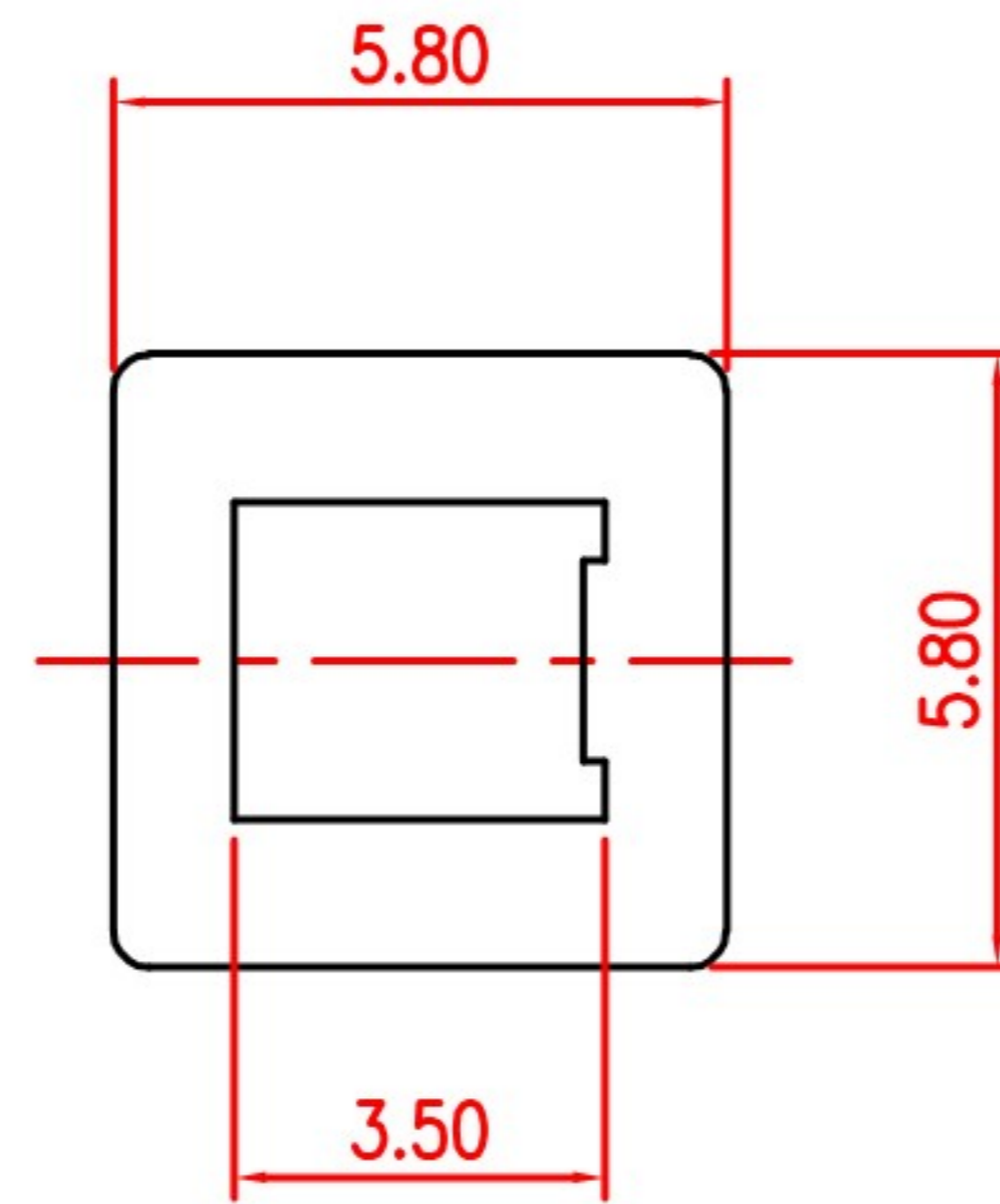


SYMB	REVISION	DATE	APVD.



SPECIFICATION:

1. Rating: 2A 2V DC
2. Contact resistance: 50mΩ max
3. Insulation resistance: 100MΩ min
4. Withstand Voltage: 500 AC for 1 minute
5. Operating force: 160gf
6. Life: 10000 cycles.



CIRCUIT

TITLE	PUSH SWITCH		DRAWN	J.Pang		TOLERANCE OTHERWISE UNLESS SPECIFIED		8				
PART NO.	PS-11E28L-N		CHECKED	G.C.chen		UP TO 5	±0.2	7	CONTACT PLATE	PBS	2	Ag CLAD
DRAW NO.	P274		APPROVED	H.K.Lai		ABOVE 5 ~ 30	±0.3	6	SPRING	STAINLESS STEEL	1	NATURAL
SCALE	7:2	UNIT	mm	DATE	26-09-2011	ABOVE 30 ~ 50	±0.4	5	HOOK	STAINLESS STEEL	1	Ni PLATED
						ABOVE 50	±0.5	4	TERMINAL	BRASS STRIP	2	Ag PLATED
						ANGLE	±3°	3	BOTTOM	PA66	1	BLACK
								2	COVER	POM	1	GRAY
								1	KNOB	POM	1	WHITE
								NO.	PARTS	MATERIAL	QTY.	FINISHING

