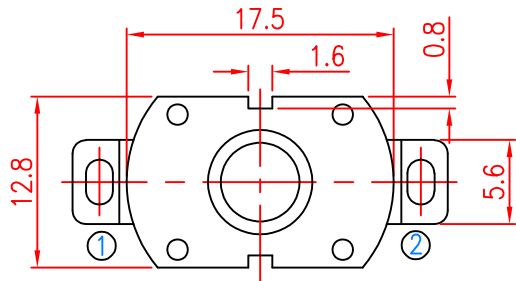


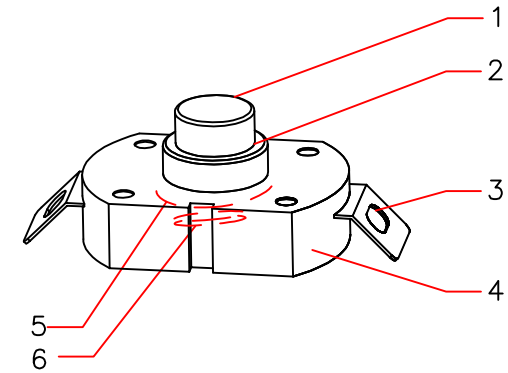
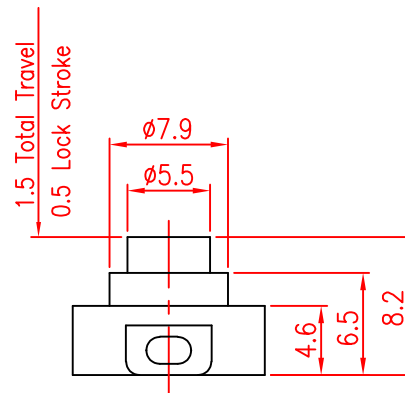
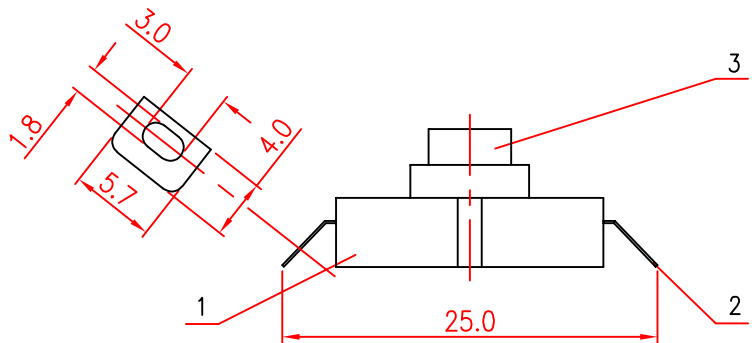
RoHS
Compliant

SYMBOL	REVISION	APPROVAL	DATE



SPECIFICATIONS

- 1.RATING:1A 30V DC
- 2.CONTACT RESISTANCE:100m Max
- 3.INSULATION RESISTANCE:100M Min
- 4.WINDSAND VOLTAGE:500 AC FOR 1 MINUTE
- 5.OPERATING FORCE:550gf;750gf;850gf
- 6.LIFE:50000 CYCLES.



CIRCUIT

No.	DESCRIPTION	MATERIAL	QTY.	FINISHING
1	KNOB	POM	2	WHITE
2	COVER	POM	1	WHITE
3	TERMINAL①②	C2680	2	Ni PLATED
4	BUTTON	POM	1	WHITE
5	CONTACT PLATE	C2680	1	Ag PLATED OVER Ni PLATED
6	SPRING	SUS	1	NATURAL

XG 东莞市溪榜电子有限公司
DONG GUAN XI BANG ELECTRONICS CO., LTD.

COPYRIGHT RESERVED,PLEASE DO NOT COPY.

PART NAME		TORCH SWITCH		DRAWING		J.Pang		DWG.No.		P2	
PART NO.		XB-TPS-11D01-N-550		CHECK		G.C.Chen		REV.		B	
UNIT: mm	TOLERANCE UNLESS	UP TO 5	±0.2	ANGLE	APPROVAL	H.K.Lai	DATE	30-03-2012	PAGE	1 OF 1	SCALE
	OTHERWISE SPECIFIED:	ABOVE 5~30	±0.3								

F

E

D

C

B

A