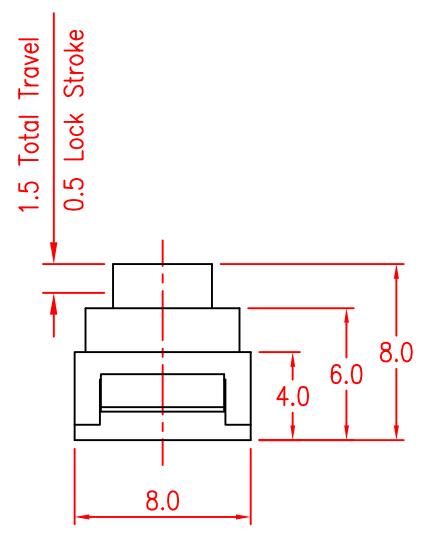
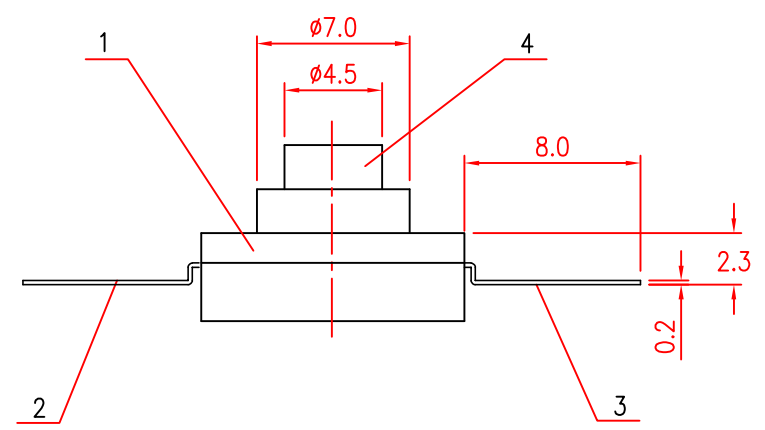
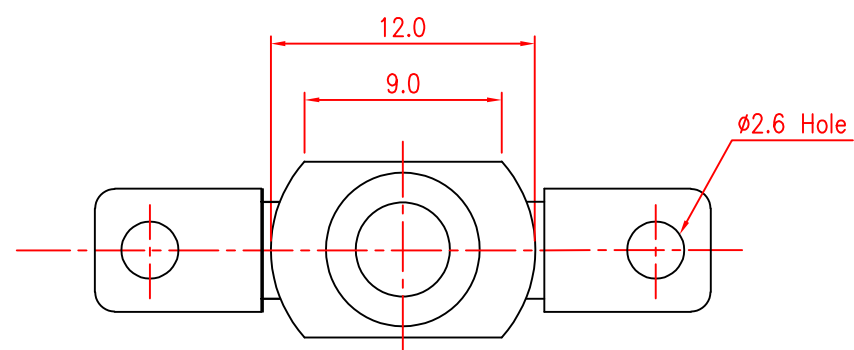
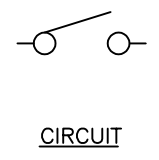


SYMB	REVISION	DATE	APVD.



SPECIFICATION:

- 1.Rating:1A 30V DC
- 2.Contact resistance:100mΩ max
- 3.Insulation resistance:100MΩ min
- 4.Withstand Voltage:500 AC for 1 minute
- 5.Operating force:600gf;750gf;850gf
- 6.Life:50000 cycles.



TITLE	TORCH SWITCH			DRAWN	L.Liu		TOLERANCE OTHERWISE UNLESS SPECIFIED		8				
PART NO.	XB-TPS-11C57			CHECKED	G.C.Chen		UP TO 5	±0.2	7	SPRING	SUS	1	NATURAL
DRAW NO.	P272			APPROVED	H.K.Lai		ABOVE 5 ~ 30	±0.3	6	CONTACT	BRONZE	1	Ag PLATED
SCALE	1:1	UNIT	mm	DATE	29-05-2012		ABOVE 30 ~ 50	±0.4	5	COVER	POM	1	WHITE
							ABOVE 50	±0.5	4	KNOB	POM	2	WHITE
							ANGLE	±3°	3	TERMINAL	BRASS STRIP	1	Ag PLATED
									2	TERMINAL	BRASS STRIP	1	Ag PLATED
									1	HOUSING	POM	1	WHITE
									NO.	PARTS	MATERIAL	QTY.	FINISHING

