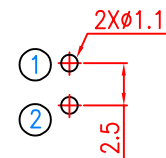
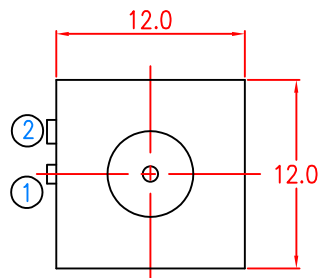
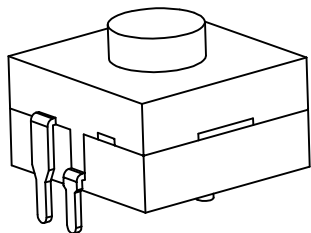


SYMB	REVISION	DATE	APVD.
	PS SERIES → TPS SERIES	13-05-2011	陈桂昌

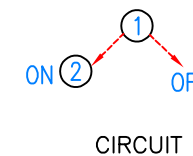
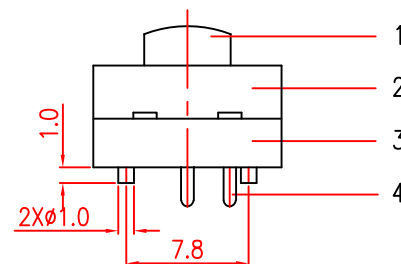
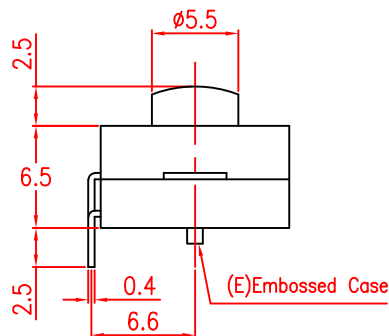
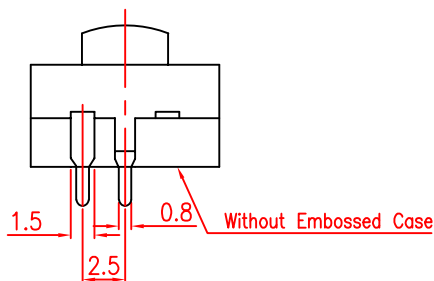
Part Number	Case
TPS-112D03	Without Embossed
TPS-112D03-E	With Embossed



P.C.B LAYOUT
TOP VIEW

SPECIFICATION:

1. Rating: 1A 30V DC
2. Contact resistance: 100mΩ max
3. Insulation resistance: 100MΩ min
4. Withstand Voltage: 500 AC for 1 minute
5. Operating force: 550gf, 750gf
6. Life: 30000 cycles.



TITLE	TORCH SWITCH	DRAWN	L.Liu	TOLERANCE OTHERWISE UNLESS SPECIFIED	8					
PART NO.	XB-TPS-112D03	CHECKED	G.C.Chen	UP TO 5	±0.2	6				
DRAW NO.	P91	APPROVED	H.K.Lai	ABOVE 5 ~ 30	±0.3	5				
SCALE: 2:1	UNIT: mm	DATE: 15-05-2008		ABOVE 30 ~ 50	±0.4	4	TERMINAL	C2680	2	Ag PLATED
				ABOVE 50	±0.5	3	HOUSING	POM	1	BLACK
				ANGLE	±3'	2	COVER	POM	1	BLACK
						1	KNOB	POM	1	BLACK
						NO.	PARTS	MATERIAL	QTY.	FINISHING

XB 东莞市溪榜电子有限公司
DONG GUAN XI BANG ELECTRONICS CO., LTD.