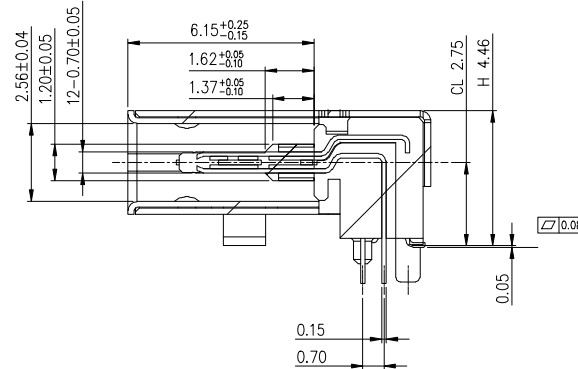
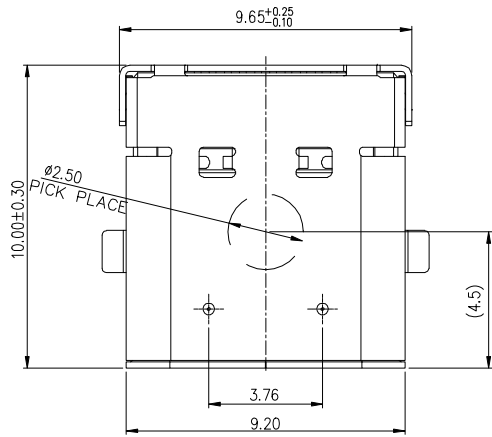
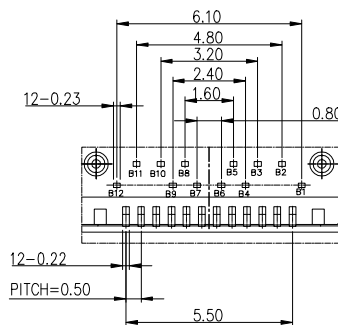
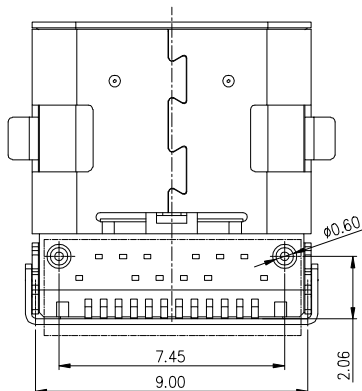
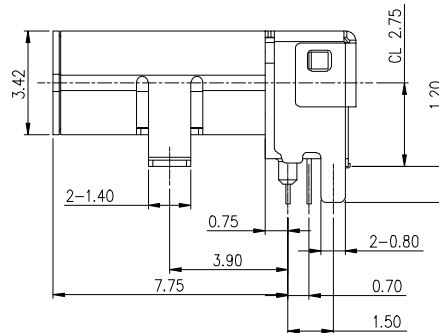
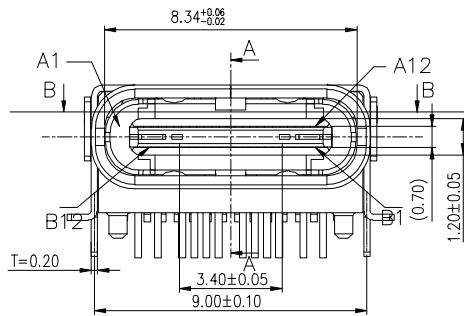


RoHS

REV.	EC#	DESCRIPTION	DATE	DRAWING	CHECKED	APPROVED
A0		NEW RELEASE	07/12'16	HUANGTAO		YZZ



Section A-A
Scale 1:1



Detail A

- 1.MATERIAL:
MOLDING: LCP UL94 V-0
CONTACT: COPPER ALLOY.
Au1u" ON CONTACT AREA,
G/F GOLD ON SOLDER AREA,
50u" NICKEL PLATING OVER ALL.
SHELL: SUS304-H,T=0.30±0.03mm
50u" NICKEL PLATING OVER ALL.
EMI SHILD: SUS304-H,T=0.12±0.03mm
LATCH: SUS301-H,T=0.15±0.03mm
- 2.MECHANICAL:
INSERTION: 5~20N.
EXTRACTION: 8~20N.
DURABILITY: 10000 CYCLES
- 3.ELECTRICAL:
CURRENT: 5A MIN FOR VBUS;
0.25A MIN FOR OTHER.
VOLTAGE: 5VAC MAX
WITHSTANDING VOLTAGE: 100V AC.
CONTACT RESISTANCE: 40mΩ MAX.
INSULATION RESISTANCE: 100MΩ MIN.
- 4.ENVIRONMENTAL
TEMPERATURE RANGE: -30°C TO +80°C

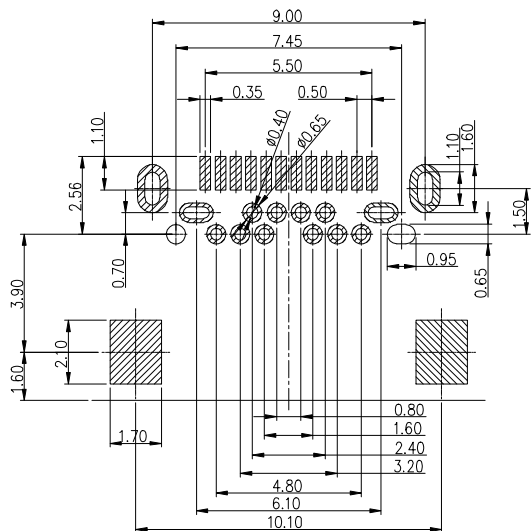
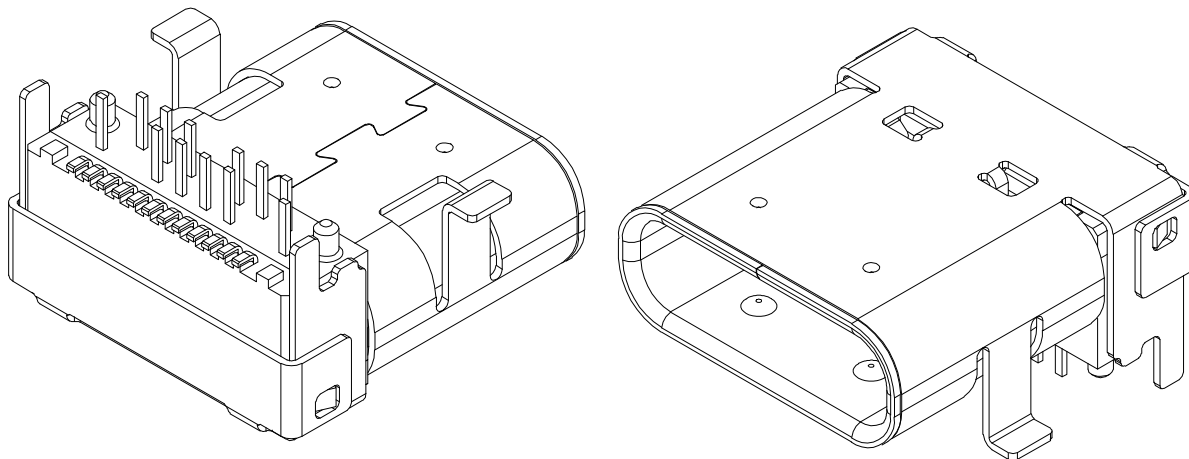
PART No.:

USB SERIES
PLATING:
31: Au1u"+G/F

PAKING:
2: REEL
SERIAL NO.
163: DIMA=8.65
164: DIMA=10.0

MILLIMETERS	INCH	UNITS	东莞市溪榜电子有限公司 DONG GUAN XI BANG ELECTRONICS CO., LTD.			
X.° ± 2'	X.° ± 2'	MM	PART NUMBER: XB-104311642		TITLE: TYPE C 24PIN板上双壳垫高外壳前SMT后DIP	
.X ± 0.38	.XX ± 0.012	MAT'L	APPD:		DWG NO.:	
.XX ± 0.25	.XXX ± 0.008	SEE NOTES	CHKD:		C-104311632-00	
.XXX ± 0.15	.XXXX ± 0.004	FINISH	DR:		SCALE	SHEET
		SEE NOTES			1:1	1/4
		QTY			REV.	
		SEE NOTES			A0	

RoHS



RECOMMEND P.C.B LAYOUT (COMPONENT SIDE)
TOLERANCE FOR PCB LAYOUT IS ± 0.05

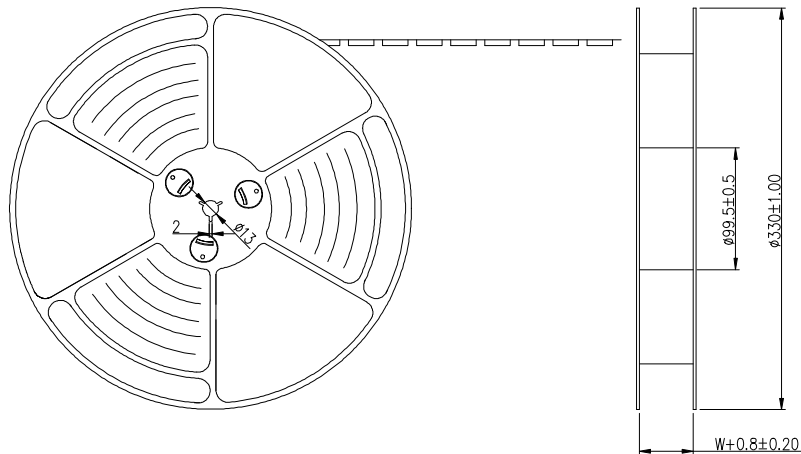
USB TYPE-C FULL-FEATURED RECEPTACLE INTERFACE PIN ASSIGNMENTS

PIN	Signal Name	Description	PIN	Signal Name	Description
A1	GND	Ground return	B12	GND	Ground return
A2	SSTXp1	Positive half of first SuperSpeed TX differential pair	B11	SSRXp1	Positive half of first SuperSpeed RX differential pair
A3	SSTXn1	Negative half of first SuperSpeed TX differential pair	B10	SSRXn1	Negative half of first SuperSpeed RX differential pair
A4	Vbus	Bus Power	B9	Vbus	Bus Power
A5	CC1	Configuration Channel	B8	SBU2	Sideband Use (SBU)
A6	Dp1	Positive half of the USB 2.0 differential pair-Position 1	B7	Dn2	Negative half of the USB 2.0 differential pair-Position 2
A7	Dn1	Negative half of the USB 2.0 differential pair-Position 1	B6	Dp2	Positive half of the USB 2.0 differential pair-Position 2
A8	SBU1	Sideband Use (SBU)	B5	CC2	Configuraation Channel
A9	Vbus	Bus Power	B4	Vbus	Bus Power
A10	SSRXn2	Negative half of second SuperSpeed RX differential pair	B3	SSTXn2	Negative half of second SuperSpeed TX differential pair
A11	SSRXp2	Positive half of second SuperSpeed RX differential pair	B2	SSTXp2	Positive half of second SuperSpeed TX differential pair
A12	GND	Ground return	B1	GND	Ground return

MILLIMETERS	INCH	UNITS	东莞市溪榜电子有限公司 DONG GUAN XI BANG ELECTRONICS CO., LTD.			
X. ^o ± 2'	X. ^o ± 2'	MM	PART NUMBER:	XB-104311642		
.X ± 0.38	.XX ± 0.012	MAT'L				
.XX ± 0.25	.XXX ± 0.008	SEE NOTES	APPD:	TITLE: TYPE C 24PIN板上双壳垫高外壳前SMT后DIP		
.XXX ± 0.15	.XXXX ± 0.004	FINISH				
		SEE NOTES	CHKD:	DWG NO.: C-104311632-00		
		QTY	DR:			
		SEE NOTES		SCALE	SHEET	REV.
				1:1	2/4	A0

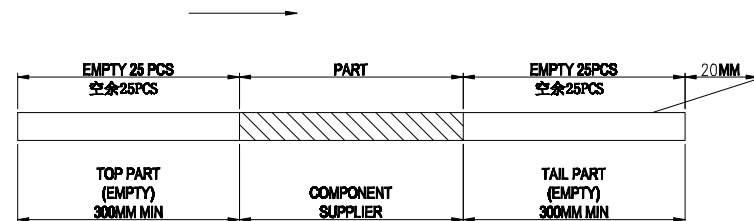
RoHS

出料方向
PULL OUT DIRECTEON

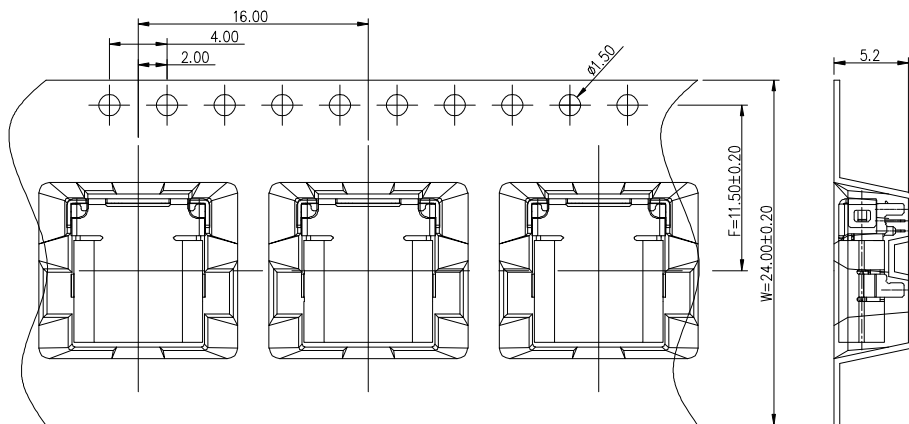


NOTES

1. 帶子引導長度
LEAD TAPE LENGTH
出料方向
PULL OUT DIRECTEON

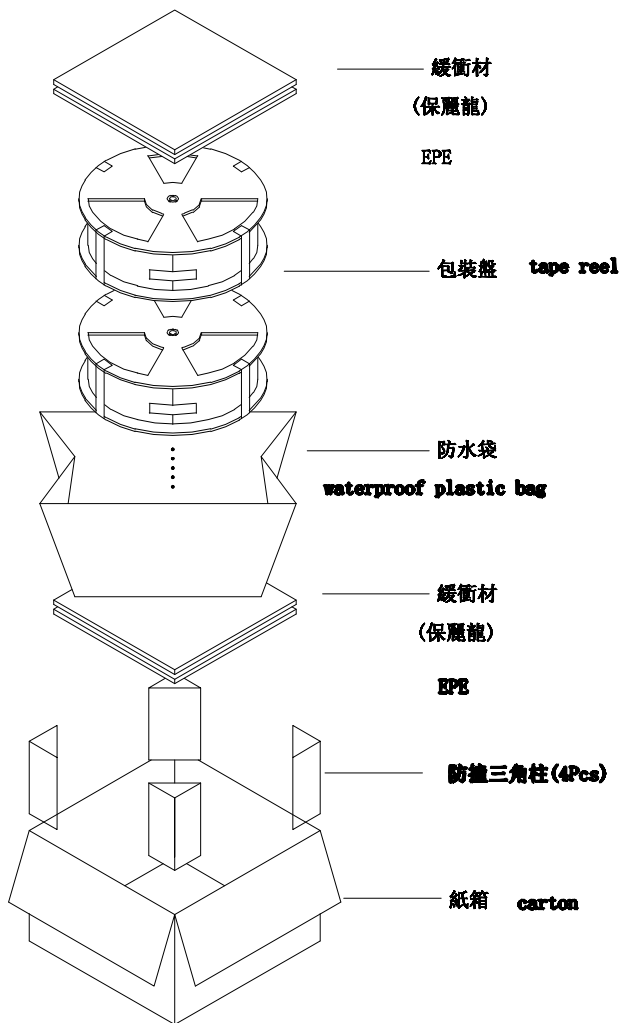


2. 出貨運輸過程中一定注意：
THIS REQUIREMENT SHOULD BE APPLIED AT SHIPMENT：
卷帶在運輸過程中不能散開
PEELING OFF SHOULD NOT BE ALLOWED DURING TRANSPORTATION

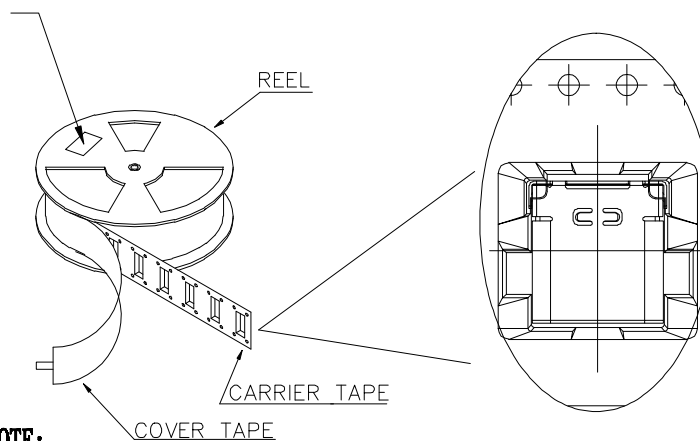


MILLIMETERS	INCH	UNITS	东莞市溪榜电子有限公司 DONG GUAN XI BANG ELECTRONICS CO., LTD.			
X. ^o ± 2'	X. ^o ± 2'	MM	PART NUMBER: XB-104311642		TITLE: TYPE C 24PIN板上双壳垫高外壳前SMT后DIP	
.X ± 0.38	.XX ± 0.012	MAT'L	APPD:		DWG NO.: C-104311632-00	
.XX ± 0.25	.XXX ± 0.008	SEE NOTES	CHKD:		SCALE	SHEET
.XXX ± 0.15	.XXXX ± 0.004	FINISH	DR:		1:1	3/4
		SEE NOTES			REV.	A0
		QTY				
		SEE NOTES				

RoHS



at small positioning hole of the carrier tape side).
 標籤黏貼處 (朝捲裝包材的小定位孔一側)
 Location of label sticking (label



NOTE:

1. 每捲包裝數量及每箱裝箱數量如左下表格。
Packing q'ty of each reel & carton as below table shown.
2. 以上膠帶覆蓋下包裝帶經包裝機熱熔包裝
Use cover tape to cover and hot melt machine to seal up.
3. 每個紙箱放2個珍珠棉
Every carton use 2pcs EPE.
4. 將裝滿產品的卷盤放入紙箱并以膠帶封口
Put reels in the carton and use adhesive tape to seal up.

產品料號 (PRODUCT No.)	包裝容量 (PACKING CAPACITY)			重量 WEIGHT (Kg)		
	PCS/REEL	REELS/CARTON	PCS/CARTON	N.W./PCS	N.W./BOX	G.W./BOX
	650	10	6500	0.704		

MILLIMETERS	INCH	UNITS	XIB 东莞市溪榜电子有限公司 DONG GUAN XI BANG ELECTRONICS CO., LTD.			
X.° ± 2'	X.° ± 2'	MM	PART NUMBER: XB-104311642	TITLE: TYPE C 24PIN板上双壳垫高外壳前SMT后DIP		
.X ± 0.38	.XX ± 0.012	MAT'L		APPD:	DWG NO.: C-104311632-00	
.XX ± 0.25	.XXX ± 0.008	SEE NOTES	CHKD:	SCALE 1:1	SHEET 4/4	REV. A0
.XXX ± 0.15	.XXXX ± 0.004	FINISH	DR:			
		SEE NOTES	QTY			
			SEE NOTES			