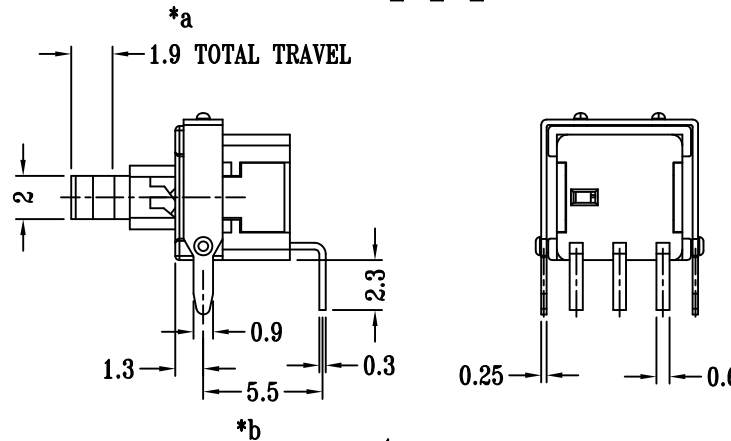
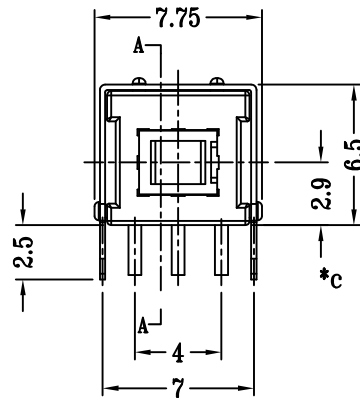
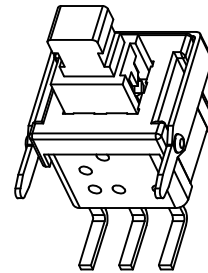
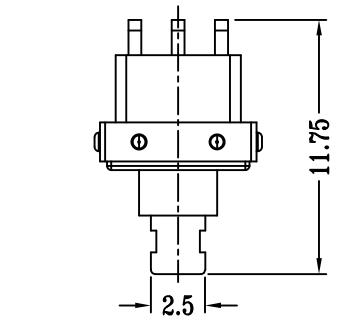
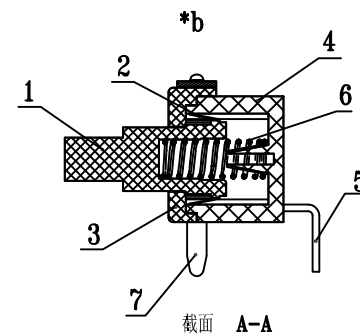
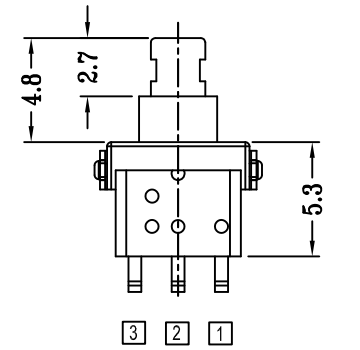
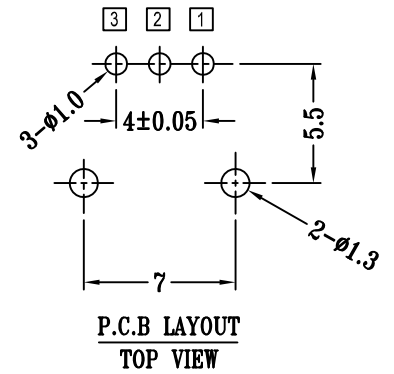
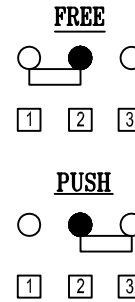


CAD FILE:



**SCHEMATIC**



- 1. OPERATION: NON-LOCK
- 2. RATING: 12V DC 50mA
- 3. CONTACT RESISTANCE: 100 mΩ MAX.
- 4. INSULATION RESISTANCE: 250V DC ,100 MΩ MIN.
- 5. OPERATION FORCE: 200±50 gf
- 6. OPERATION TEMPERATURE RANGE: -20°C~+70°C

注：“\*”表示关键尺寸(3个).

8					TOLERANCE				
7	SPRING	SUS304	1	NATURAL	UNLESS SPECIFIED				
6	FRAME	SUS304	1	Sn PLATED	WITHIN 1.5mm : ±0.1mm	A	2017-12-30	初版	
5	METAL TERMINAL	BRASS STRIP	3	Ag PLATED	OVER 1.5mm : ±0.2mm	ISSUE	DATE	DESCRIPTIONS OF REVISION	APPD.
4	CASE	PPA	1	GREY	TITLE : PUSH SWITCH			UNIT : mm	DRWG NO.: XB-5858C-F
3	COVER	PA9T	1	BLACK	MODEL: XB-5858C-F			SCALE: 2:1	DWN. 张俊 2017-12-30
2	CONTACT PIECE	PBS C5210R-EH	6	Ag CLAD	东莞市溪榜电子有限公司 DONG GUAN XI BANG ELECTRONICS CO., LTD.			CHK'D 黄锦效	2017-12-30
1	KNOB	PPA	1	WHITE				APPD.	
NO.	PARTS	MATERIALS	Q'TY	FINISH					